



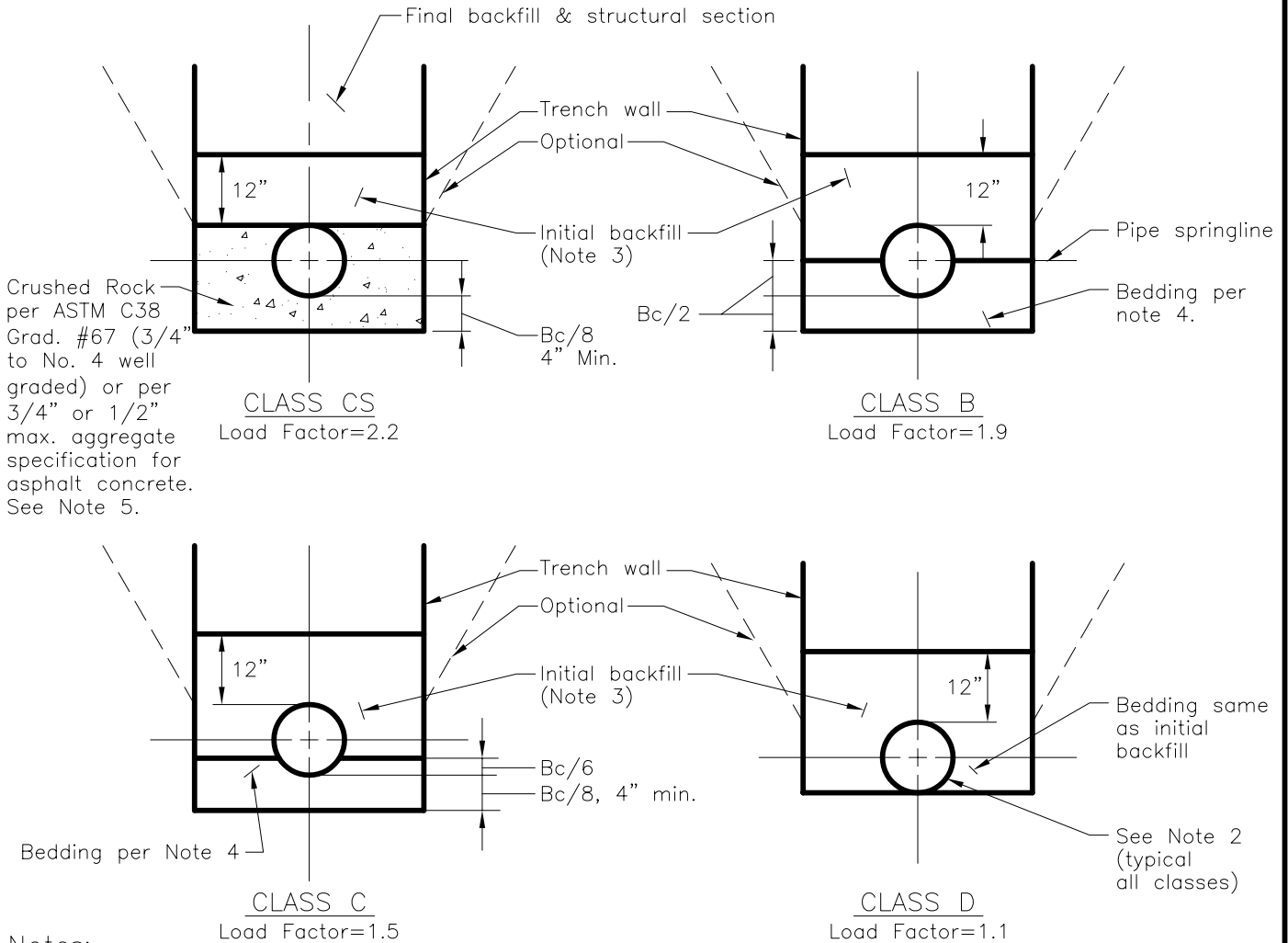
CITY OF LODI

PUBLIC WORKS DEPARTMENT

Pipe Bedding & Backfill— Rigid Pipe Trench Section

Legend:

D=Nominal pipe inside diameter (in.)
 Bc=Pipe outside diameter (in.)
 Bd=Trench width @ top of pipe= $Bc+8$ " min. each side (24" total minimum)



Notes:

1. This Standard is for rigid pipes 4" & larger; conforming to City Design Stds and Construction Specifications. Use Trench Class as shown on the plans; if not specified, use appropriate class per pipe material and depth of cover per Std Plan 501C.
2. Provide uniform & continuous support of pipe barrel between bell or coupling holes.
3. Initial backfill shall be selected sandy material per Construction Spec. Sect.6-19.02 @ 90% R.C. min.
4. Class B & C bedding material to be crushed rock per Class CS or sand as specified on the plans.
5. With crushed rock bedding, install a cut-off dam of 3 ft. of approved material every 100 ft.

Dr. KT	No. 1	Date 6/25	Revision ADDED C900 PIPE	Appr.	Approved By: <i>F. Wally Sandelin</i>	6/25/02	STD PLAN
Ch. WS					F. Wally Sandelin City Engineer R.C.E. 39895	Date	501B
Date 12/00							