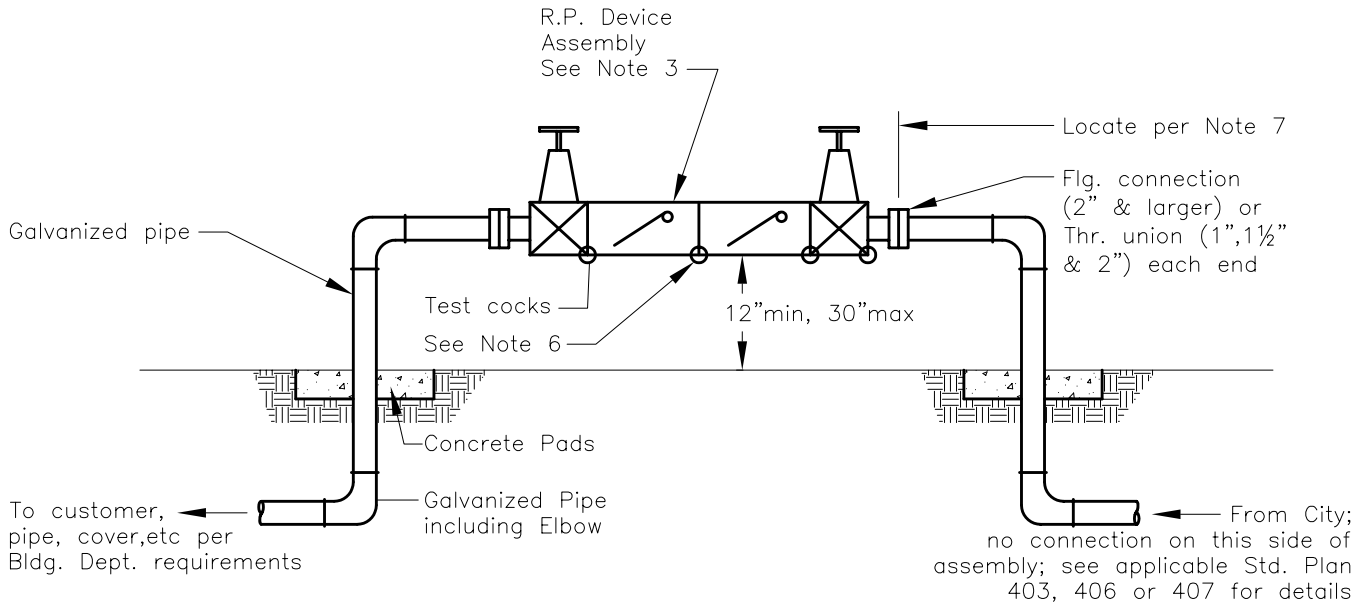




# CITY OF LODI

PUBLIC WORKS DEPARTMENT

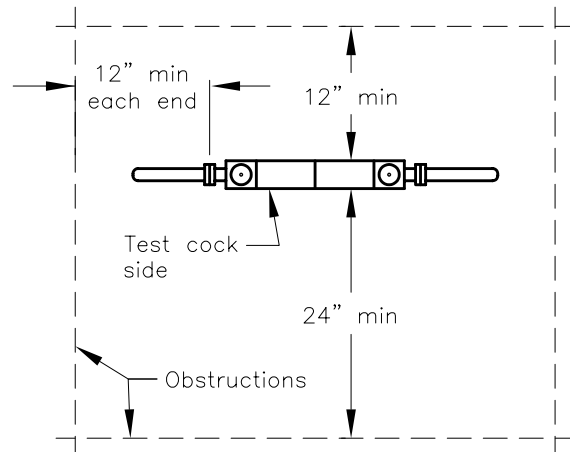
## Reduced Pressure Backflow Device Assembly



Above Ground Installation

Notes:

1. It is the customers responsibility to have the assembly tested prior to acceptance and annually by a State Certified Backflow Prevention Tester and report the results to the Public Works Department.
2. Install guard posts where device is installed in paved areas accessible to traffic or in planters less than 3' behind the curb or when directed by City.
3. FEBCO 825Y or approved equal, must be on list of approved Backflow Prevention Assemblies Dept. of Health Services.
4. Valve handles may be chained & padlocked for security.
5. This plan for domestic service only. Design for fire service applications to have approval of Public Works Director and Fire Marshal.
6. Provide drainage (with air gap) for pressure relief discharge.
7. Locate assembly immediately down stream of service box.



Plan

Dr.	No.	Date	Revision	Appr.
KT				
Ch.	WS			
Date				
12/00				

Approved By: *F. Wally Sandelin* 12/28/00  
 F. Wally Sandelin  
 City Engineer  
 R.C.E. 39895  
 Date

STD PLAN  
**413**