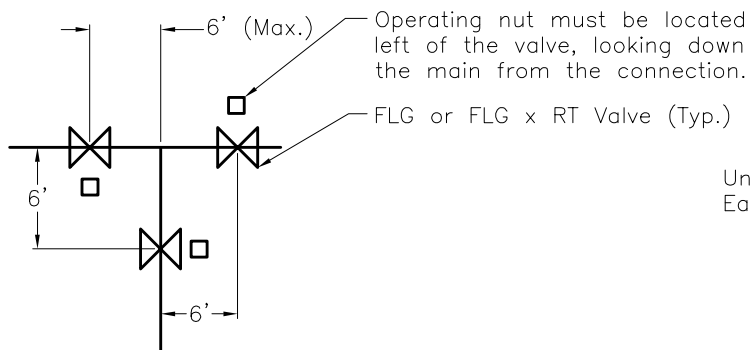




CITY OF LODI

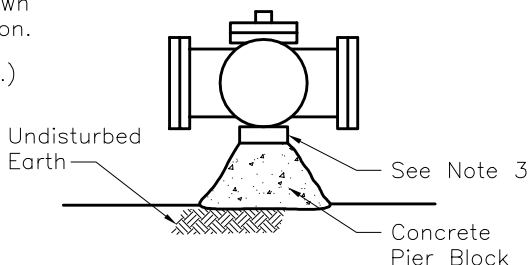
PUBLIC WORKS DEPARTMENT

Water Valve Installation



Flanged Installation

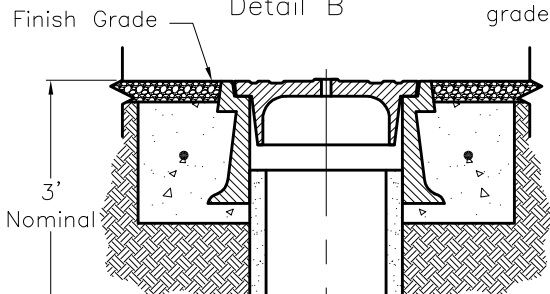
Detail B



Hot Tap Valve Support

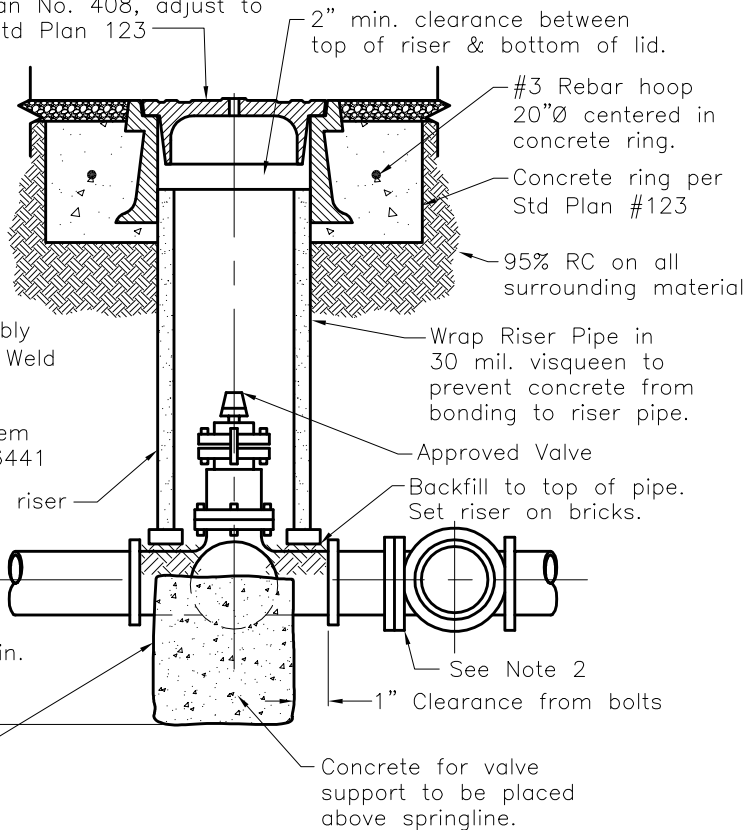
Detail C

Frame and Cover City of Lodi Standard Plan No. 408, adjust to grade per Std Plan 123



Extension Stem Detail A

See Note 1



Notes:

1. Install extension stem when distance from valve cover to operating nut is greater than 12 feet; 3' max. nominal cover per Detail A.
2. Flanged fittings shall be used where lines are to be extended at a later date or as shown on the improvement plans. Operating nuts on flanged valves must be arranged per Detail B.
3. Concrete blocks may be used for valve and riser support; thrust blocks per Standard Plan 405. For Hot Tap Valve support refer to Detail C.
4. Place Visqueen around valves before placement of concrete supports.
5. For trench backfill, see Standard Plan 501.

Sheet 1 of 2

Dr.	KT	No.	Date	Revision	Appr.	Approved By:	Date
Ch.	WS					<i>F. Wally Sandelin</i>	5/28/08
Date	7/08					F. Wally Sandelin City Engineer R.C.E. 39895	Date

STD PLAN

402