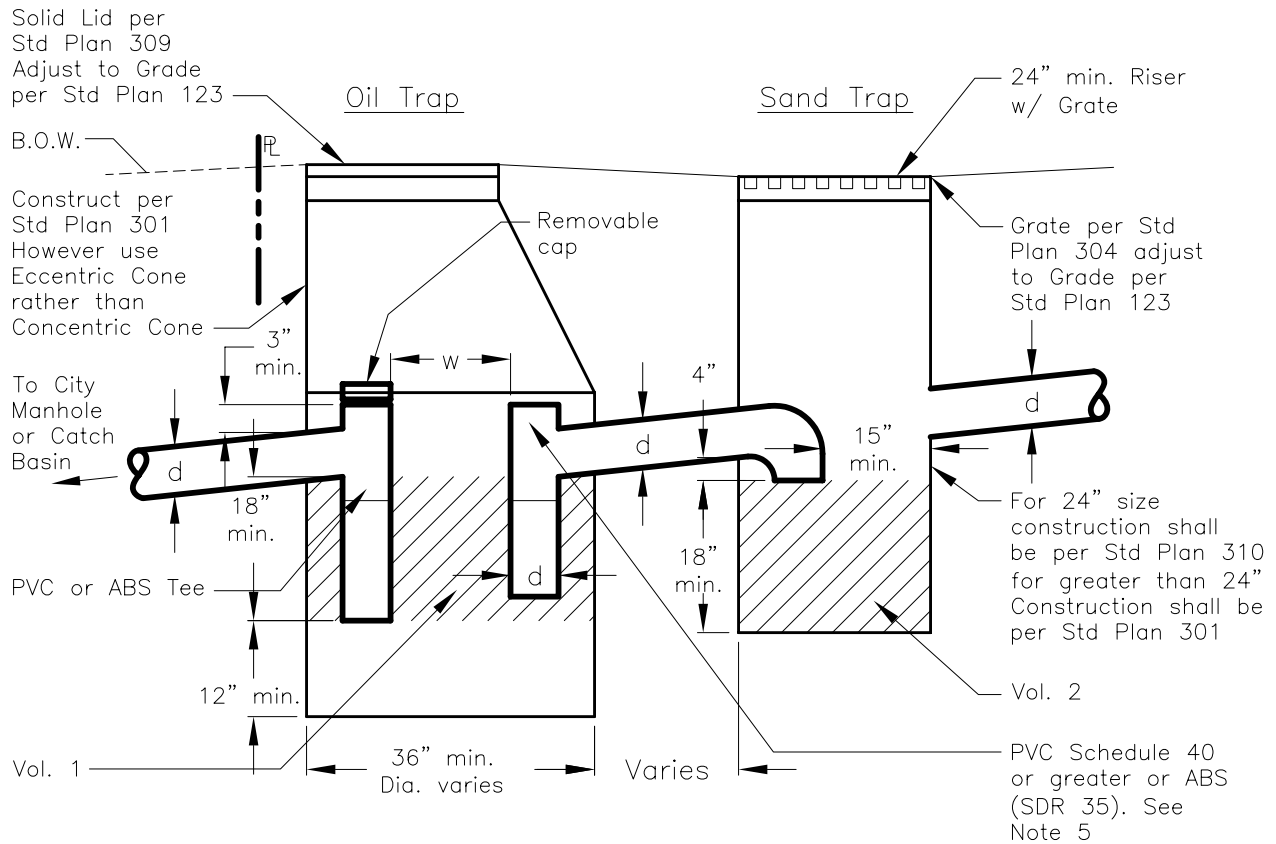




# CITY OF LODI

PUBLIC WORKS DEPARTMENT

## Sand/Oil Trap



Drainage Area (s.f.) (Excluding Landscaping)	Vol. 1 cu. ft.	d	w	Vol. 2 Combined all C.B.'S cu.ft.
0 - 20,000	3	6"	12"	Drainage Area ÷ 4000
20,000 - 40,000	6	8"	16"	
40,000 - 100,000	10	10"	20"	
100,000 - 220,000	12	12"	24"	

**Notes:**

1. Precast commercial units are acceptable with prior approval.
2. Oil Trap to be outside of fencing and subject to inspection at all times.
3. Larger sizes may be required based on generation of oil and/ or sand (i.e. Bulk oil facilities, Trucking firms)
4. For lower flows Standard Plan 205 can be used with City approval.
5. For petrochemical applications Cast Iron fittings and piping will be used.

Dr. KT	No. 1	Date 2/04	Revision ADDED REMOVABLE CAP	Appr.	Approved By: <i>F. Wally Sandelin</i>	2/12/04	STD PLAN <b>315</b>
Ch. WS					F. Wally Sandelin City Engineer R.C.E. 39895	Date	
Date 12/00							