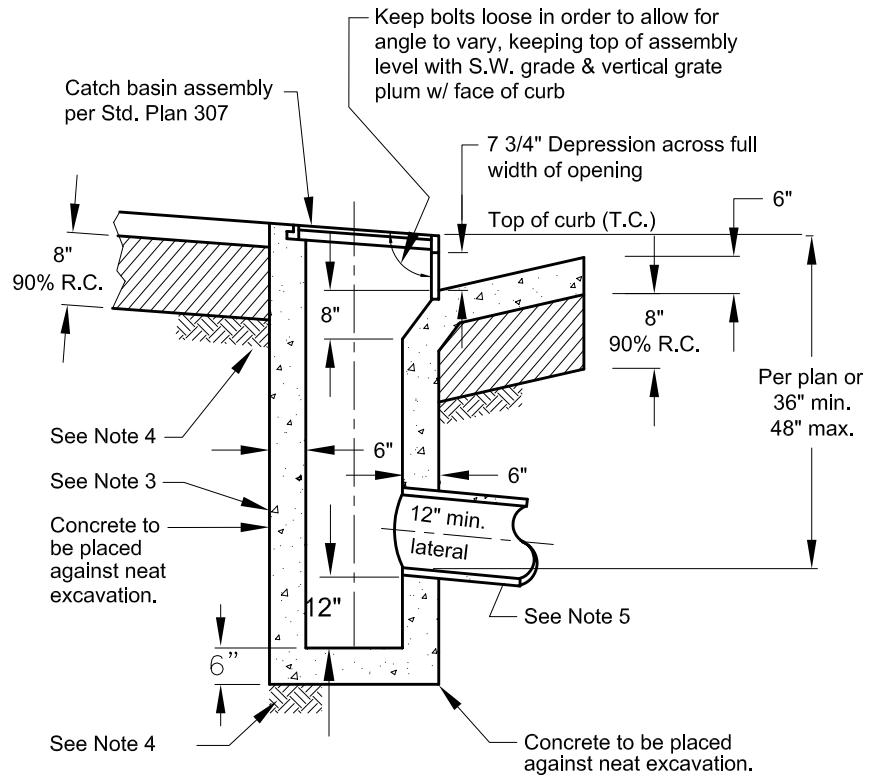


Flowline and curb transition (typ.)

Notes:

1. The concrete shall conform to following criteria.
A. 2500 P.S.I. at 28 days.
B. 1 1/2" maximum aggregate.
C. 4" slump at placing site.
D. Light broom finish.
E. Impervious membrane cure.
2. When catch basin is to be constructed with stub, the stub shall extend beyond the toe of the curb & gutter and plugged with precast plug.
3. Barrel may be constructed with 18" R.C.P. and grouted smooth.
4. Recompact over-excavated areas to 92% R.C.
5. Lateral line must be ductile iron pipe when cover is 2' or less.
6. For trench backfill requirements See Std. Pln 501.



Dr.	No.	Date	Revision	Appr.
KT	1	7/01	UPDATE PER FIRST REVISION	
WS	2	2/04	REVISED SICB OPENING DIM.	
	3	2/05	REVISED TRANSITION DIM.	

Approved By: *F. Wally Sandelin*
F. Wally Sandelin
City Engineer
R.C.E. 39895
Date: 2/2/05

STD PLAN
303