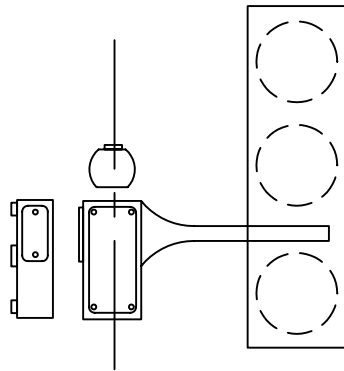




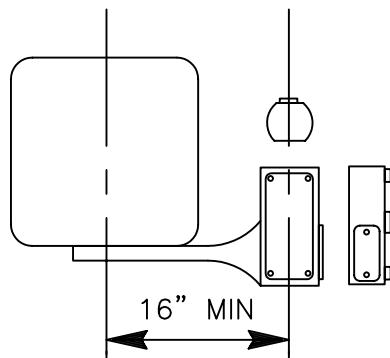
CITY OF LODI

PUBLIC WORKS DEPARTMENT

UNIMOUNT MOUNTING HARDWARE DETAILS



TYPICAL VEHICLE SIGNAL MOUNTING



TYPICAL PEDESTRIAN SIGNAL MOUNTING

NOT TO SCALE

Dr.	JSB	No.	Date	Revision	Appr.	Approved By:	STD PLAN
Ch.	PJF					<i>F. Wally Sandelin</i>	147
Date	2/04					F. Wally Sandelin City Engineer R.C.E. 39895	2/12/04 Date