

COMMODITY FUTURES TRADING COMMISSION

Agricultural Markets Roundtable

April 22, 2008

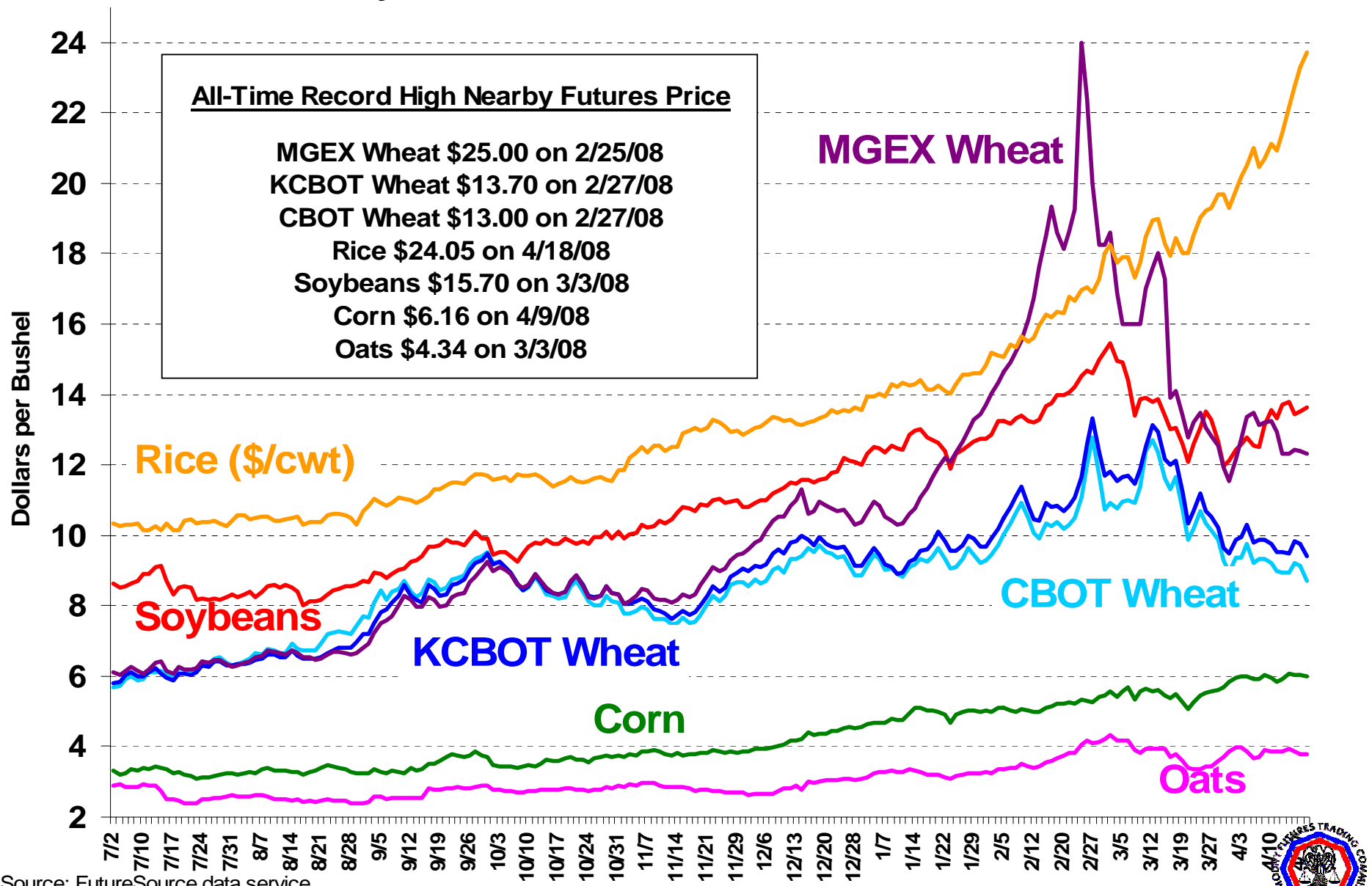
Washington, DC



CFTC Website: www.cftc.gov

Major U.S. Grain/Soy Futures Prices

Nearby Future Settlement Price 7/2/07 - 4/18/08



Source: FutureSource data service



% Annual Price Changes

April 2007 – April 2008

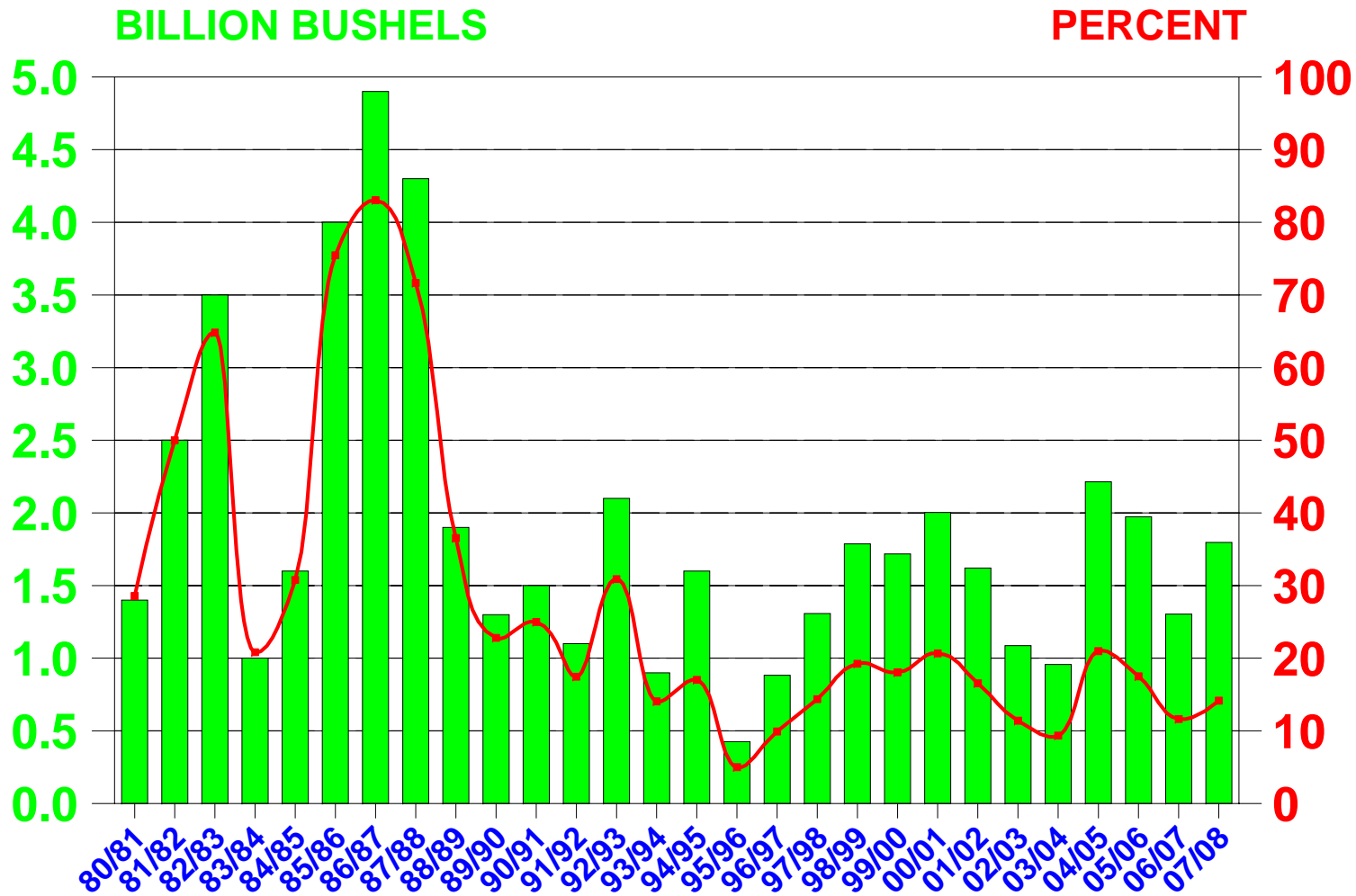
COMMODITY	Price Change
RICE	122%
WHEAT (KCBT)*	99%
WHEAT (CBOT)*	95%
SOYOIL*	88%
SOYBEANS*	83%
CRUDE OIL (NYMEX)	82%
SOYMEAL	73%
CORN*	66%
COTTON*	48%
OATS	47%
GASOLINE	41%
COCOA*	37%
GOLD	37%
SUGAR (#11)*	30%
COFFEE*	24%
PRODUCER PRICE INDEX	7%
MILK	5%
LEAN HOGS*	-5%
FEEDER CATTLE*	-7%
LIVE CATTLE*	-7%
LUMBER	-14%

*Included in COT
Supplemental Report

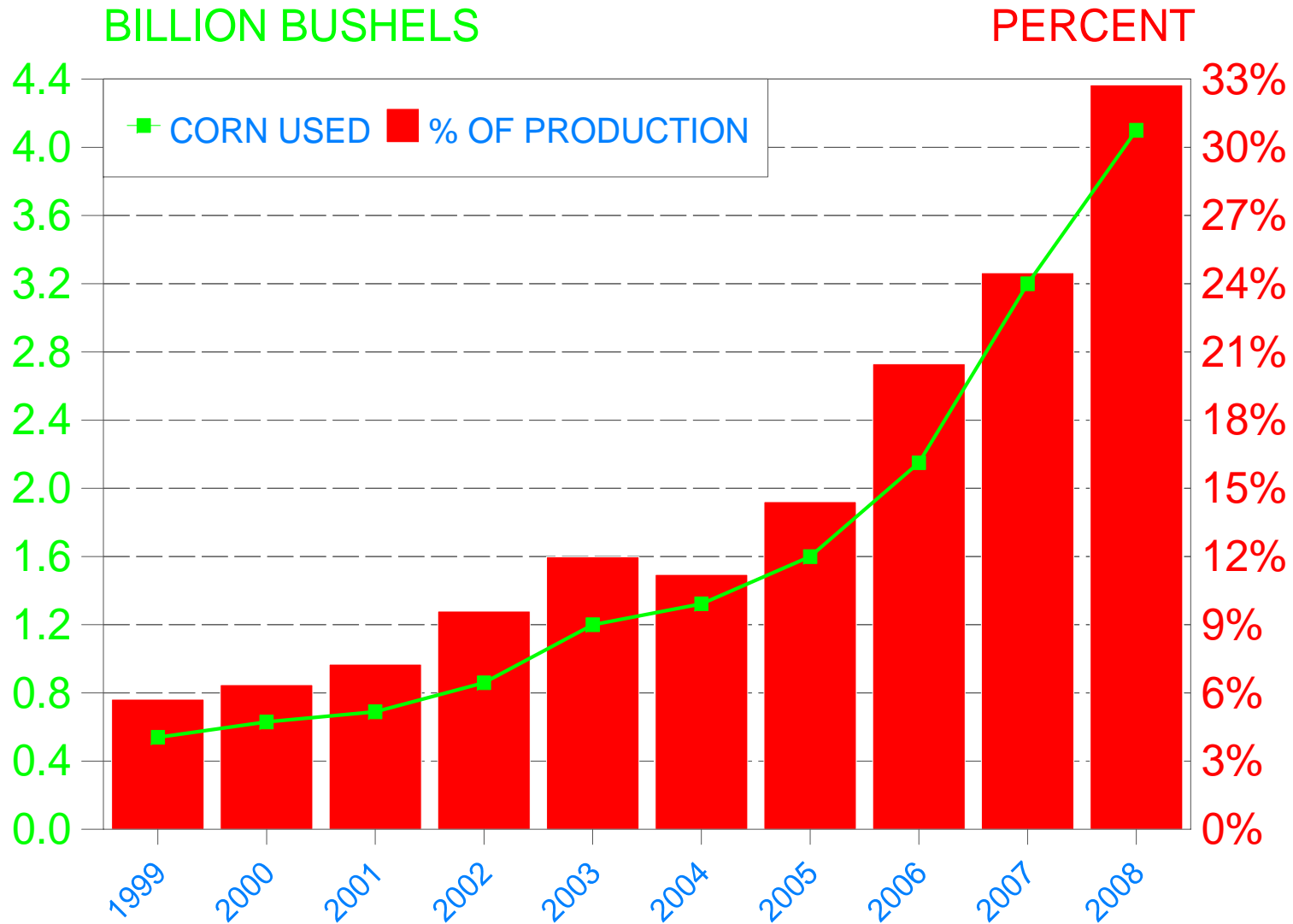


U.S. CORN ENDING-STOCKS AND STOCKS-TO-USE RATIO 1980/81 THROUGH 2007/08

■ ENDING-STOCKS ■ STOCKS/USE RATIO



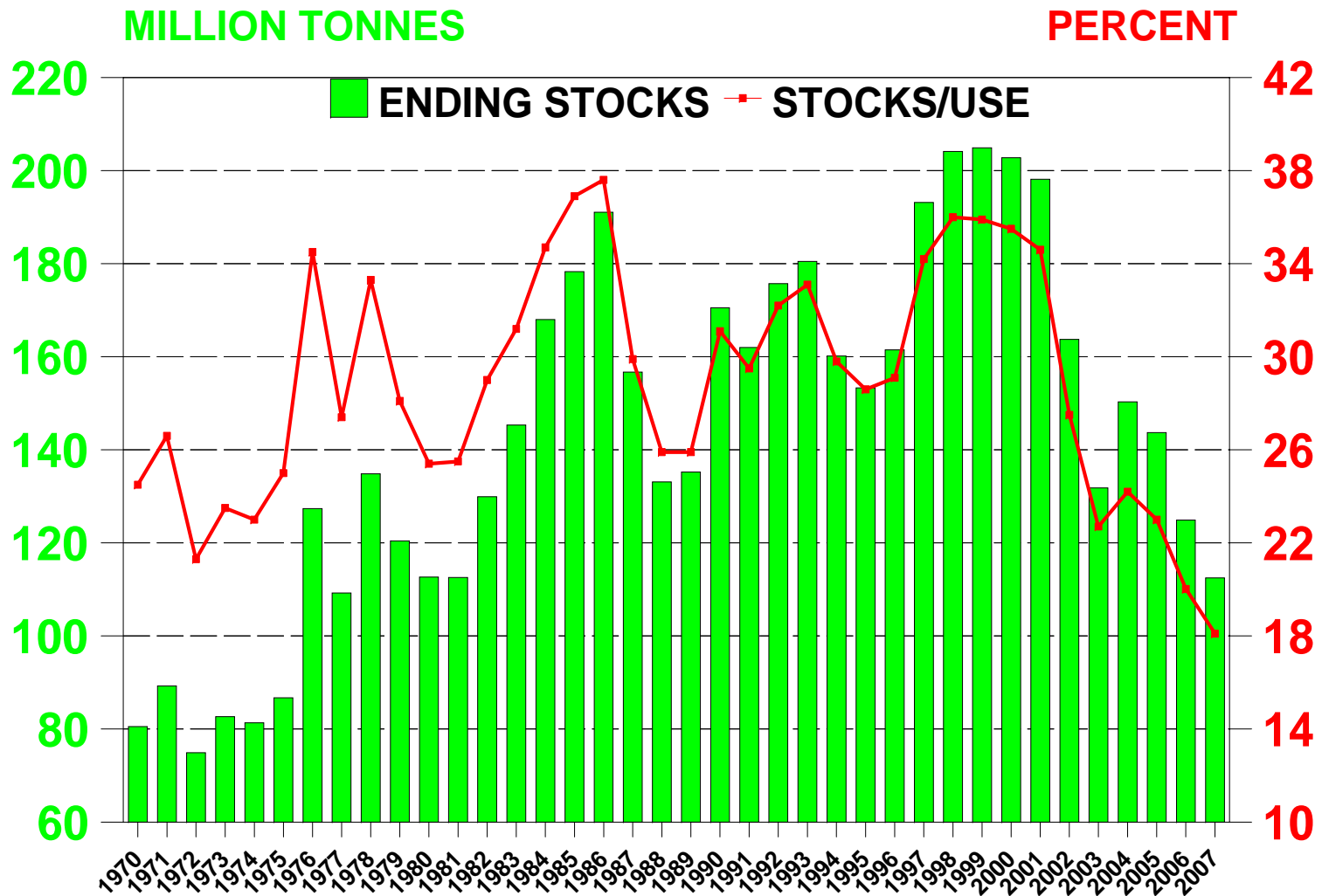
U.S. CORN USED FOR ETHANOL



2008 CORN PRODUCTION AND ETHANOL NUMBERS ARE FROM THE FEBRUARY 2008 USDA BASELINE REPORT



WORLD ALL WHEAT ENDING STOCKS AND STOCKS-TO-USE RATIO 1970/71 THROUGH 2007/08

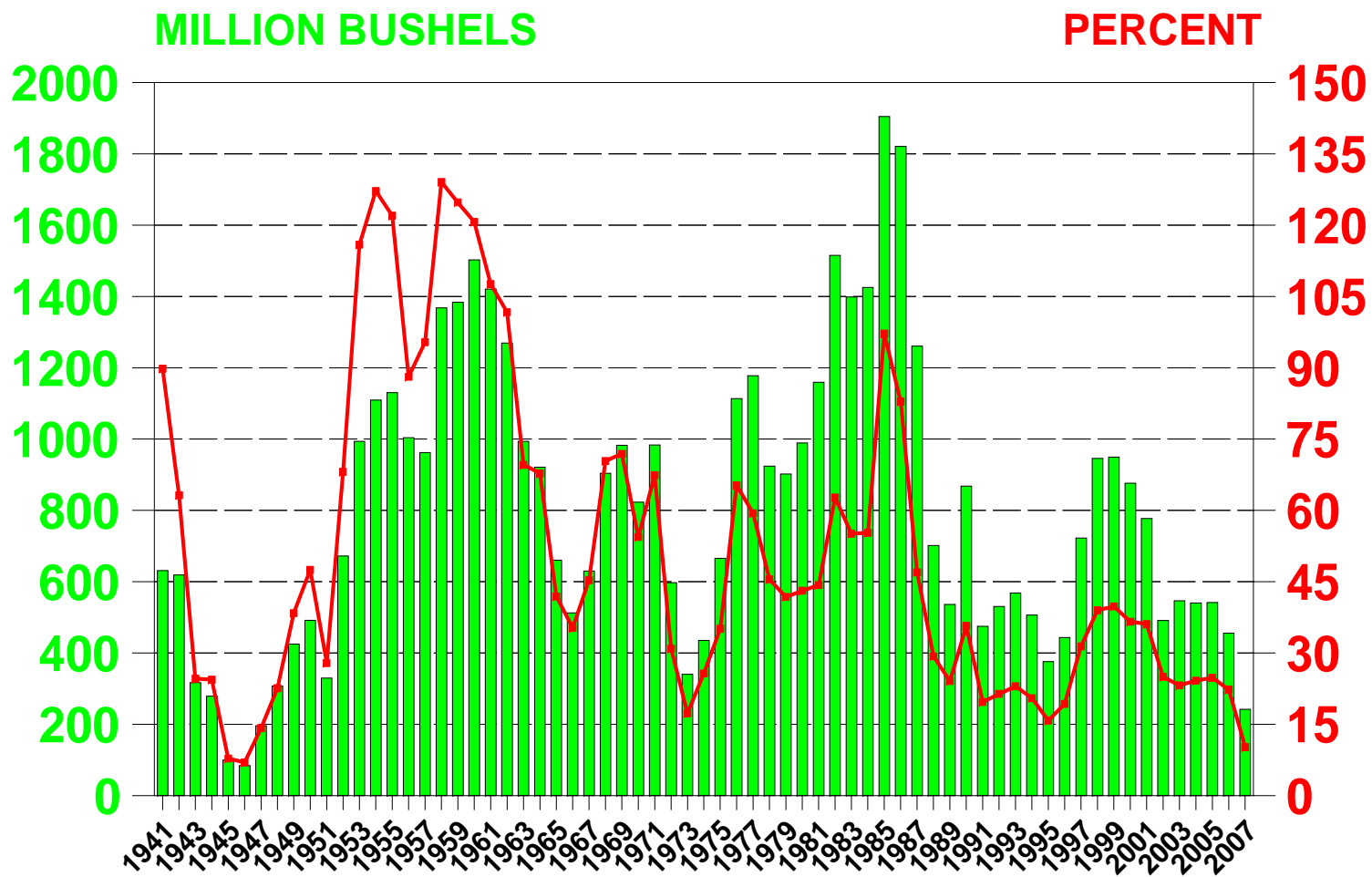


2007 WORLD ENDING STOCKS ARE THE LOWEST SINCE 1977 AT 112.48 MMT (4.13 BILLION BUSHEL)
WORLD STOCKS TO USE IS THE LOWEST ON RECORD AT 18.1%



ALL U.S. WHEAT ENDING STOCKS AND STOCKS-TO-USE RATIO 1941/02 THROUGH 2007/08

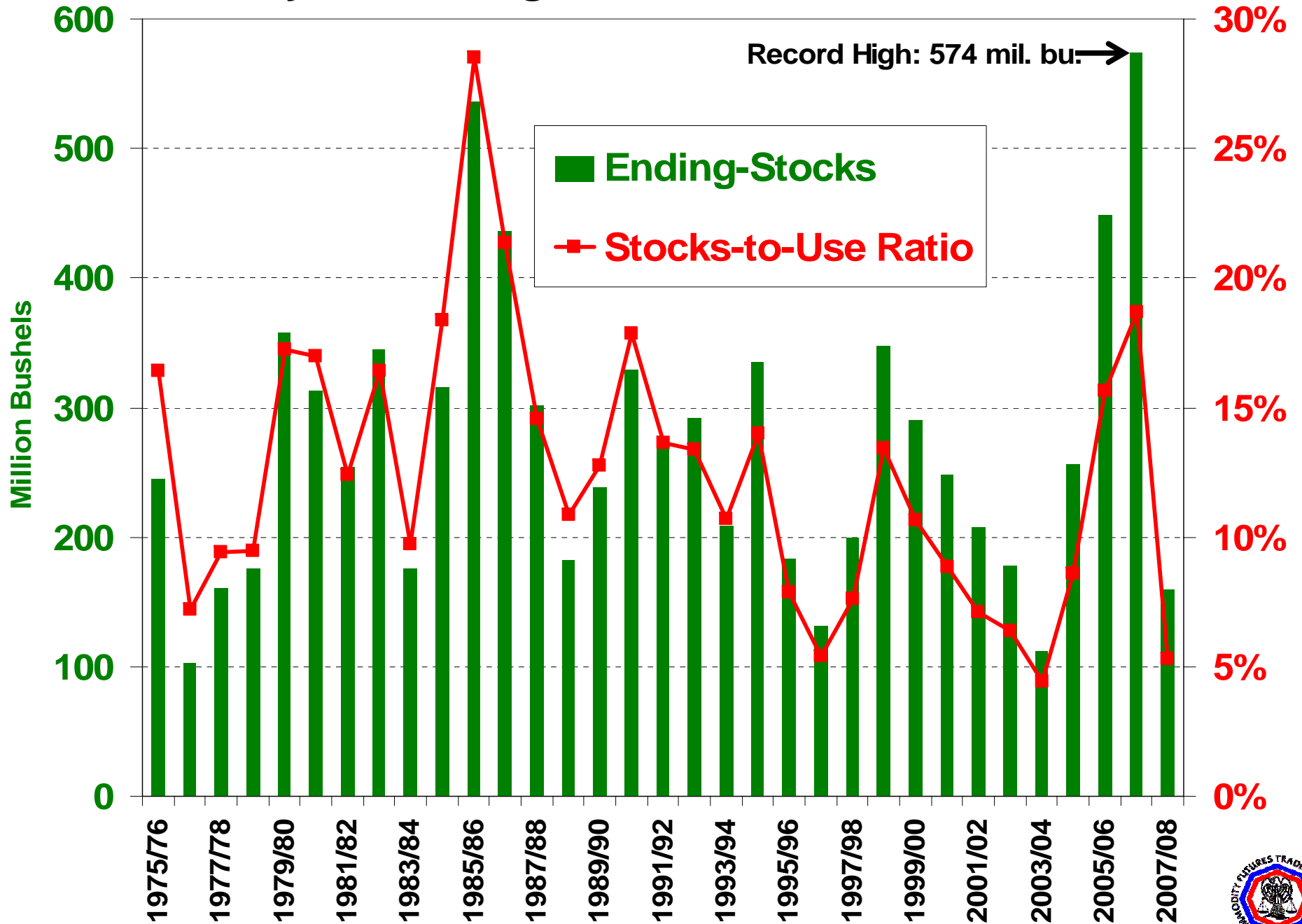
■ ENDING STOCKS — STOCKS/USE



2007 ENDING STOCKS AT 242 MILLION BUSHELS THE LOWEST SINCE 1947
2007 STOCKS-TO-USE RATIO AT 10.2% IS THE LOWEST SINCE 1946

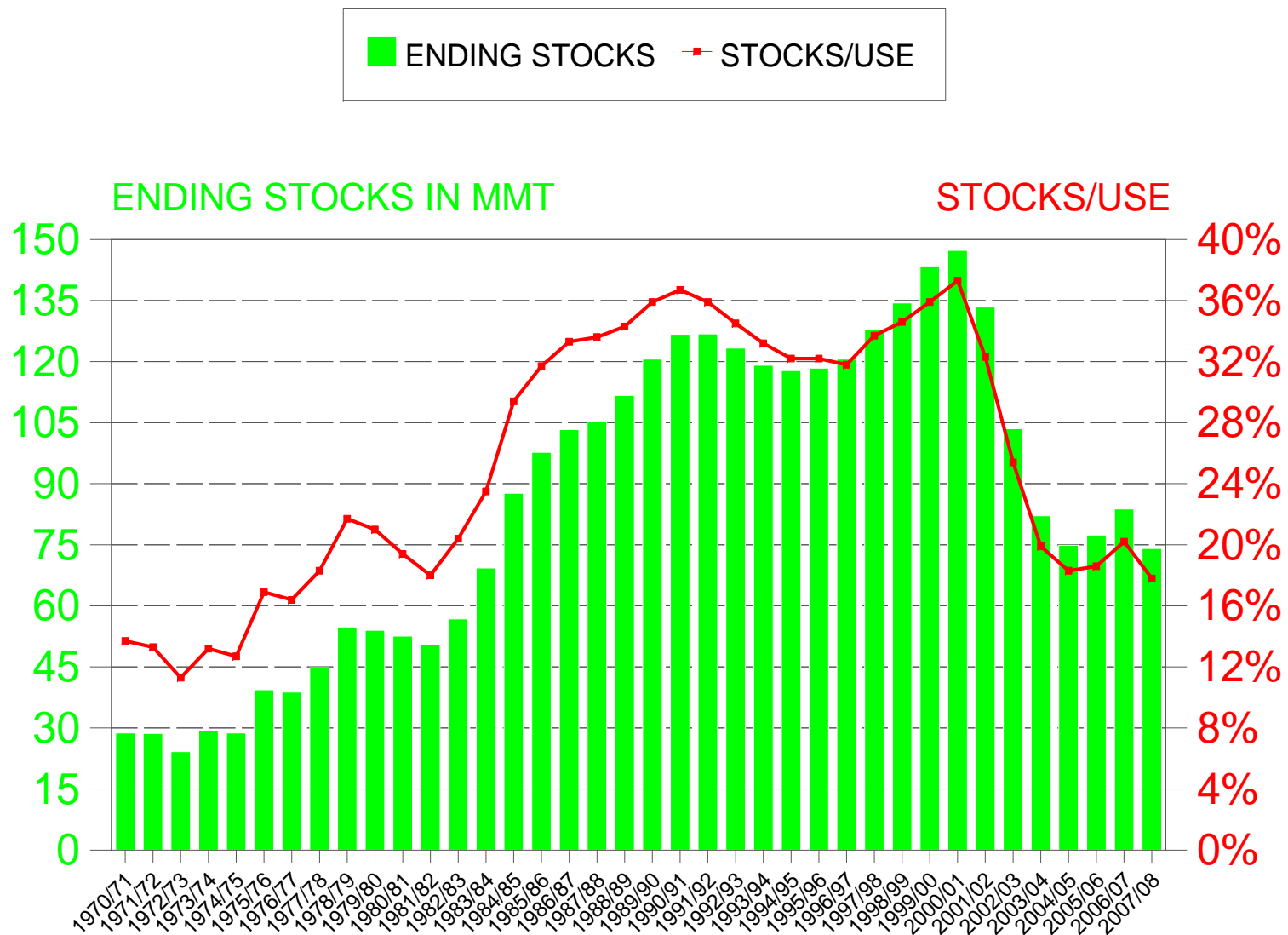


U.S. Soybean Ending-Stocks and Stocks-to-Use Ratio



WORLD RICE ENDING STOCKS & STOCKS-TO-USE RATIO

1970/71 THROUGH 2007/08

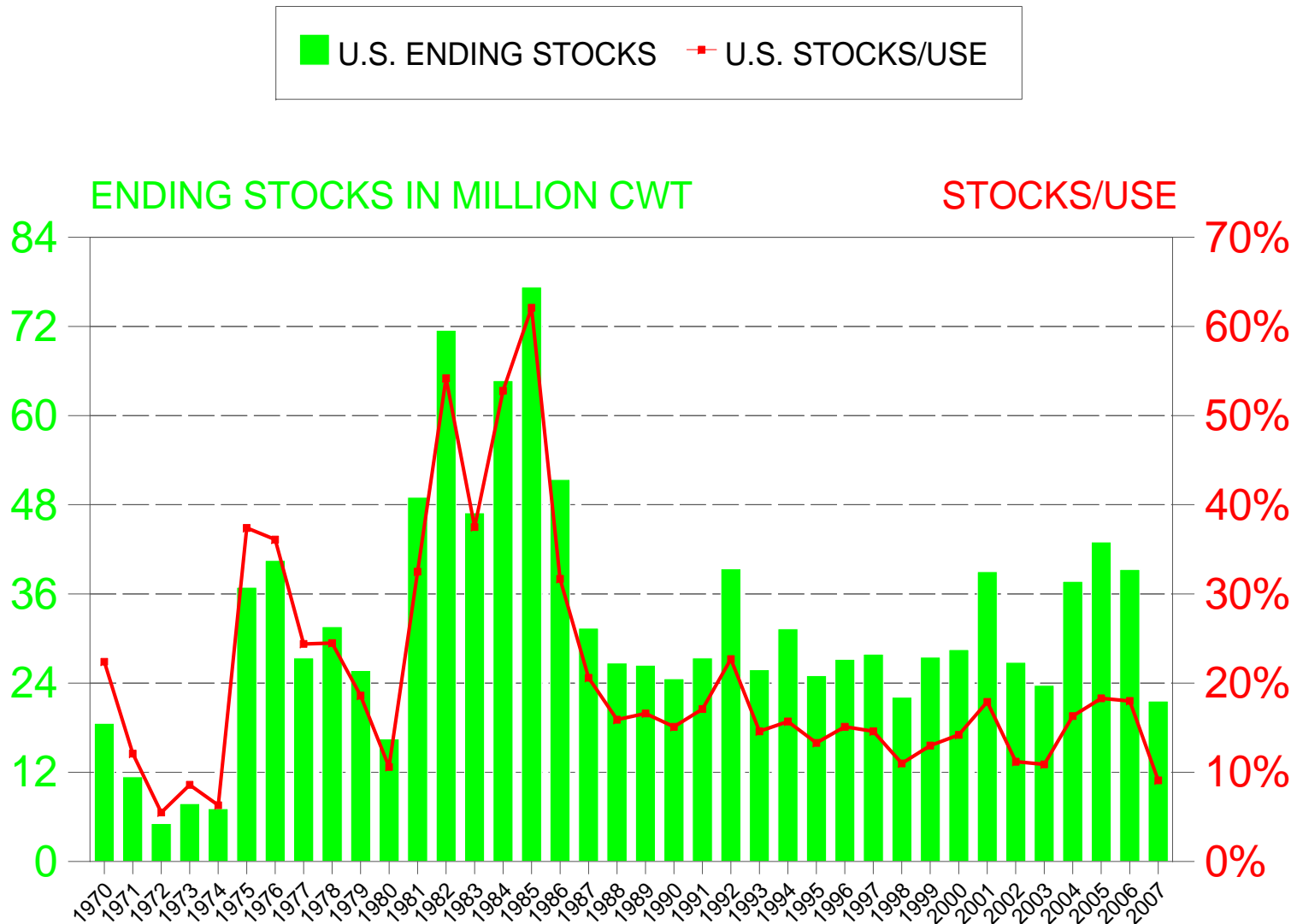


WORLD ENDING STOCKS AT 74 MMT IS THE LOWEST SINCE 1983.
 STOCKS-TO-USE AT 17.8% IS THE LOWEST SINCE 1976.



U.S. RICE ENDING STOCKS & STOCKS-TO-USE RATIO

1970/71 THROUGH 2007/08

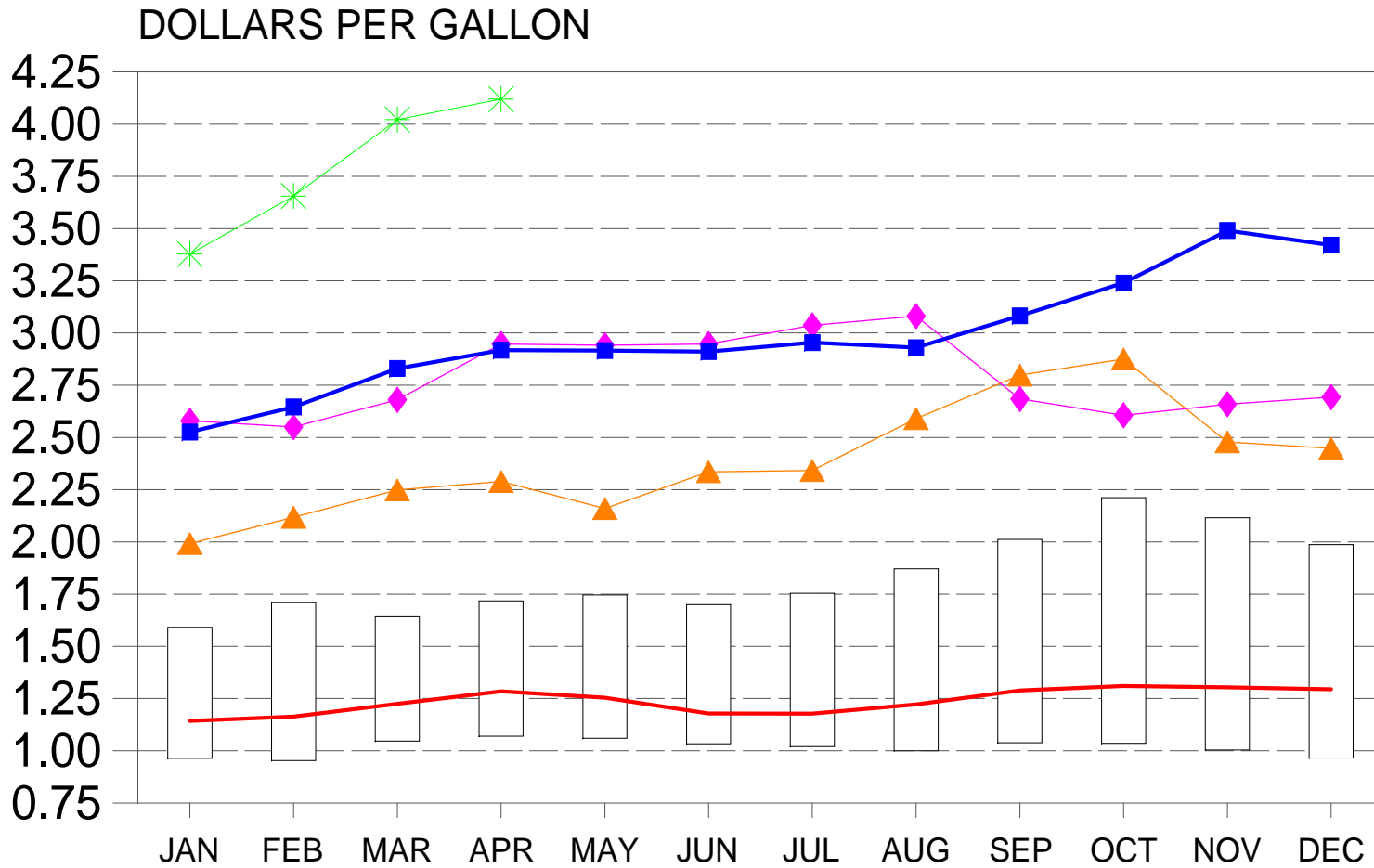


ENDING STOCKS AT 21.6% ARE DOWN 45% FROM LAST YEAR AND ARE THE LOWEST SINCE 1980. STOCKS TO USE RATIO IS AT 9.1% DOWN 50% FROM LAST YEAR AND THE LOWEST SINCE 1974.



U.S. DIESEL AVERAGE PRICE

2008, 2007, 2006, 2005, AND A 2004-1994 RANGE

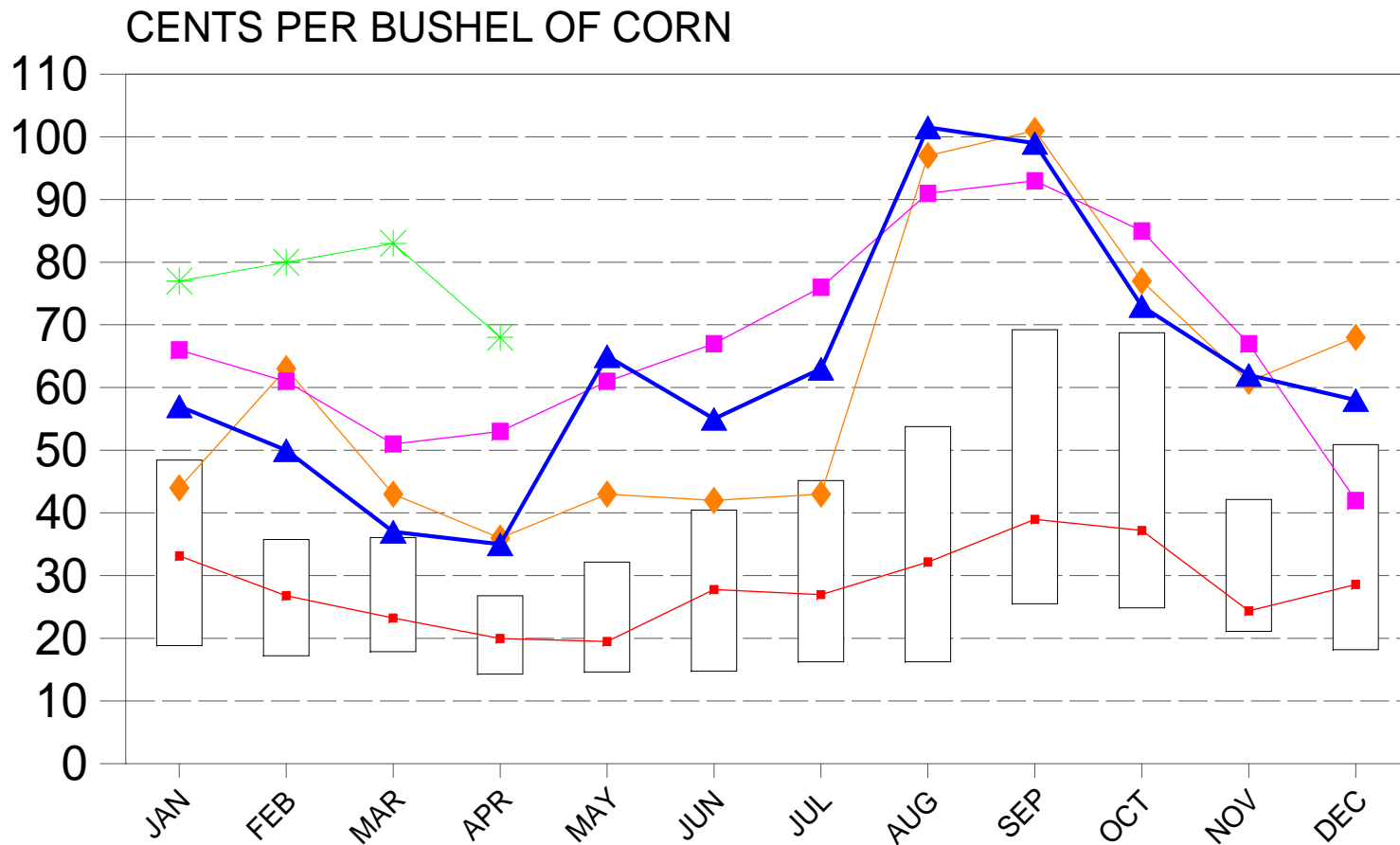


SOURCE: DEPARTMENT OF ENERGY MONTH-END DATA, APRIL 2008 AS OF 4/14/08



ILLINOIS RIVER BARGE FREIGHT RATE

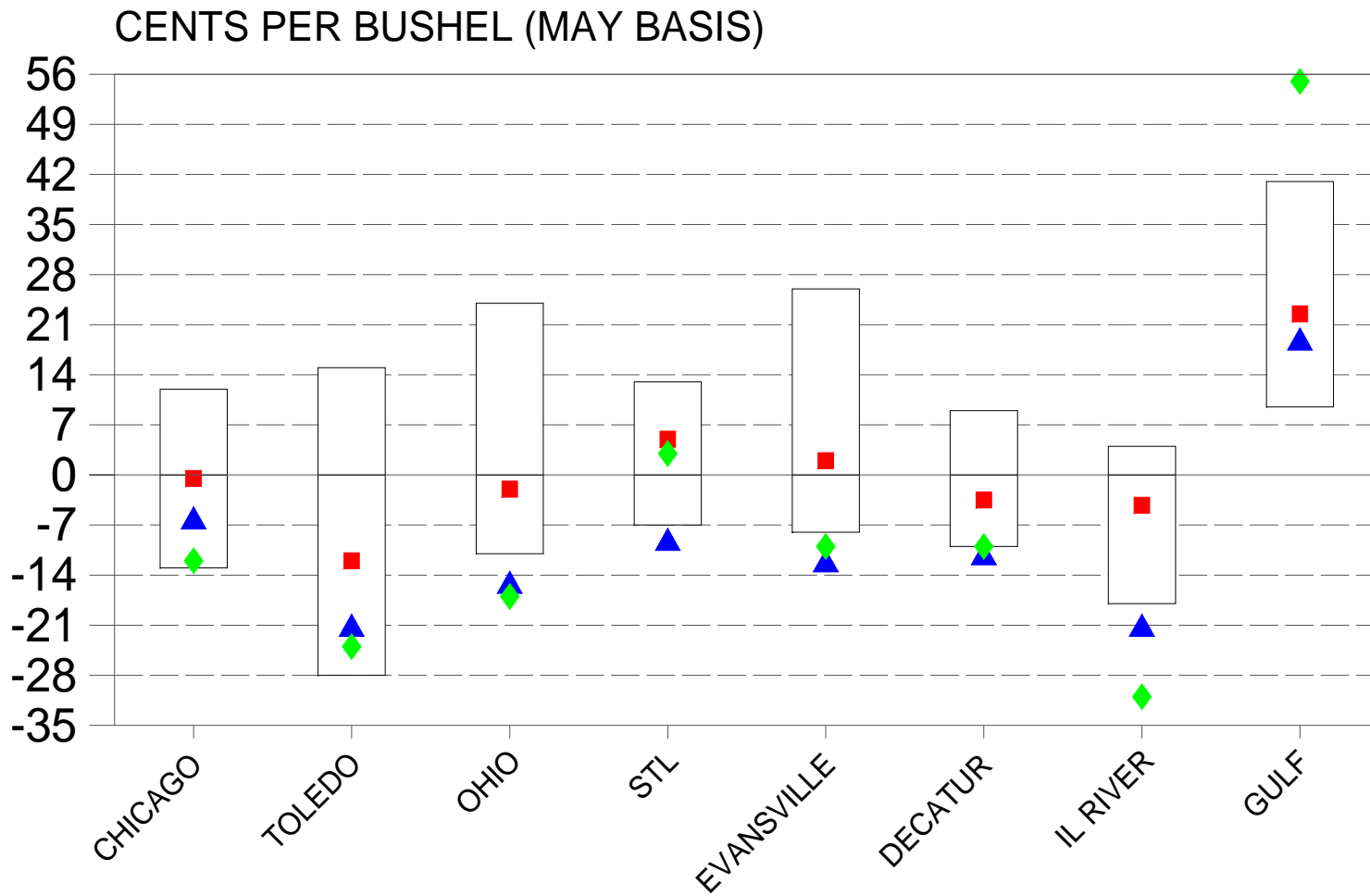
2008, 2007, 2006, 2005 AND A 2004-1994 RANGE



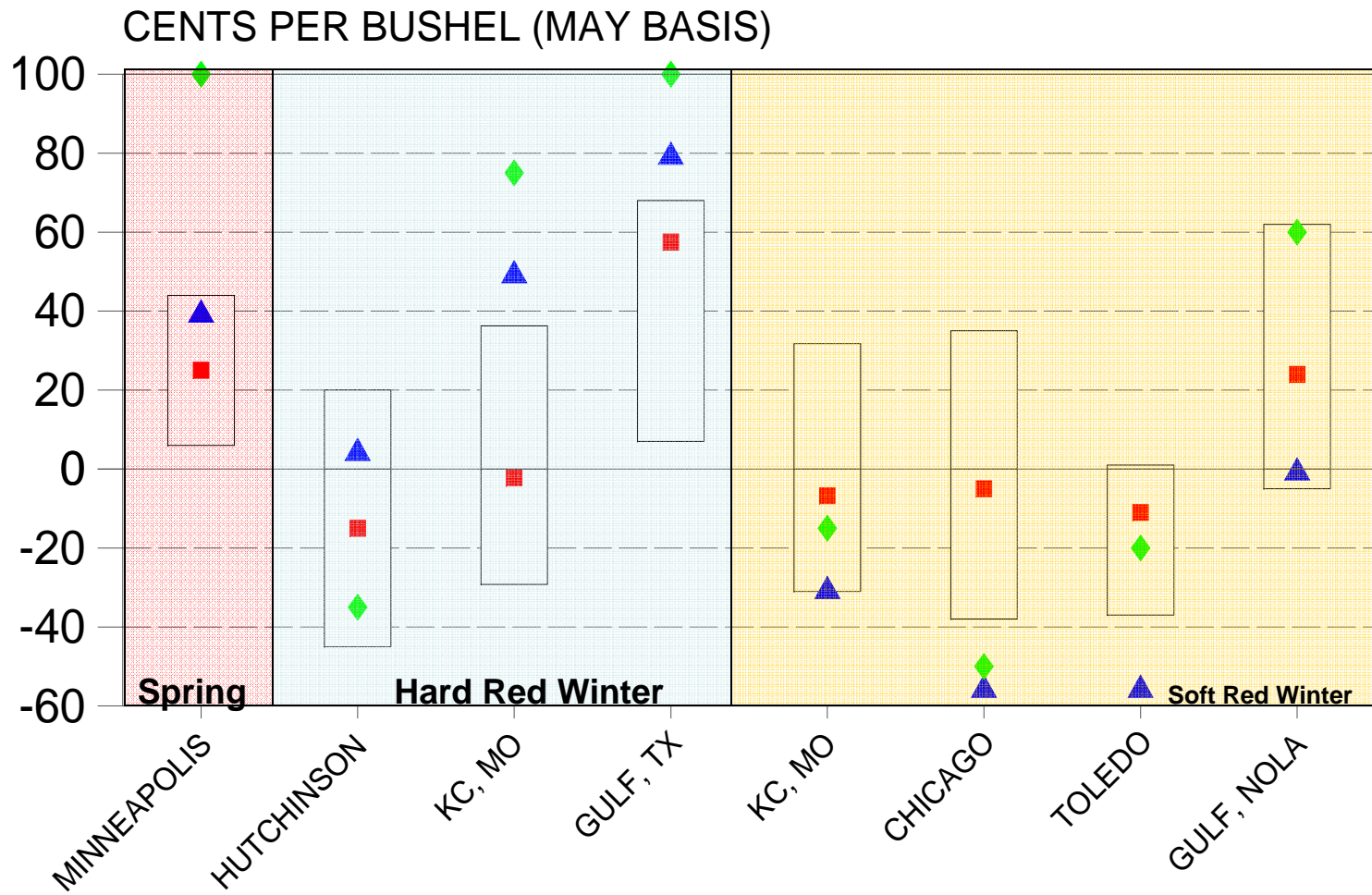
FREIGHT RATE = COST TO BARGE CORN FROM CHICAGO TO NEW ORLEANS. MONTH-END DATA, APRIL 2008 AS OF 4/8.
 HURRICANE KATRINA IMPACTED THE AUGUST AND SEPTEMBER 2005 FREIGHT COSTS DRAMATICALLY.



CORN BASIS COMPARISONS FOR THE 4th WEEK OF MARCH 2008, 2007 AND A 2006-1997 RANGE

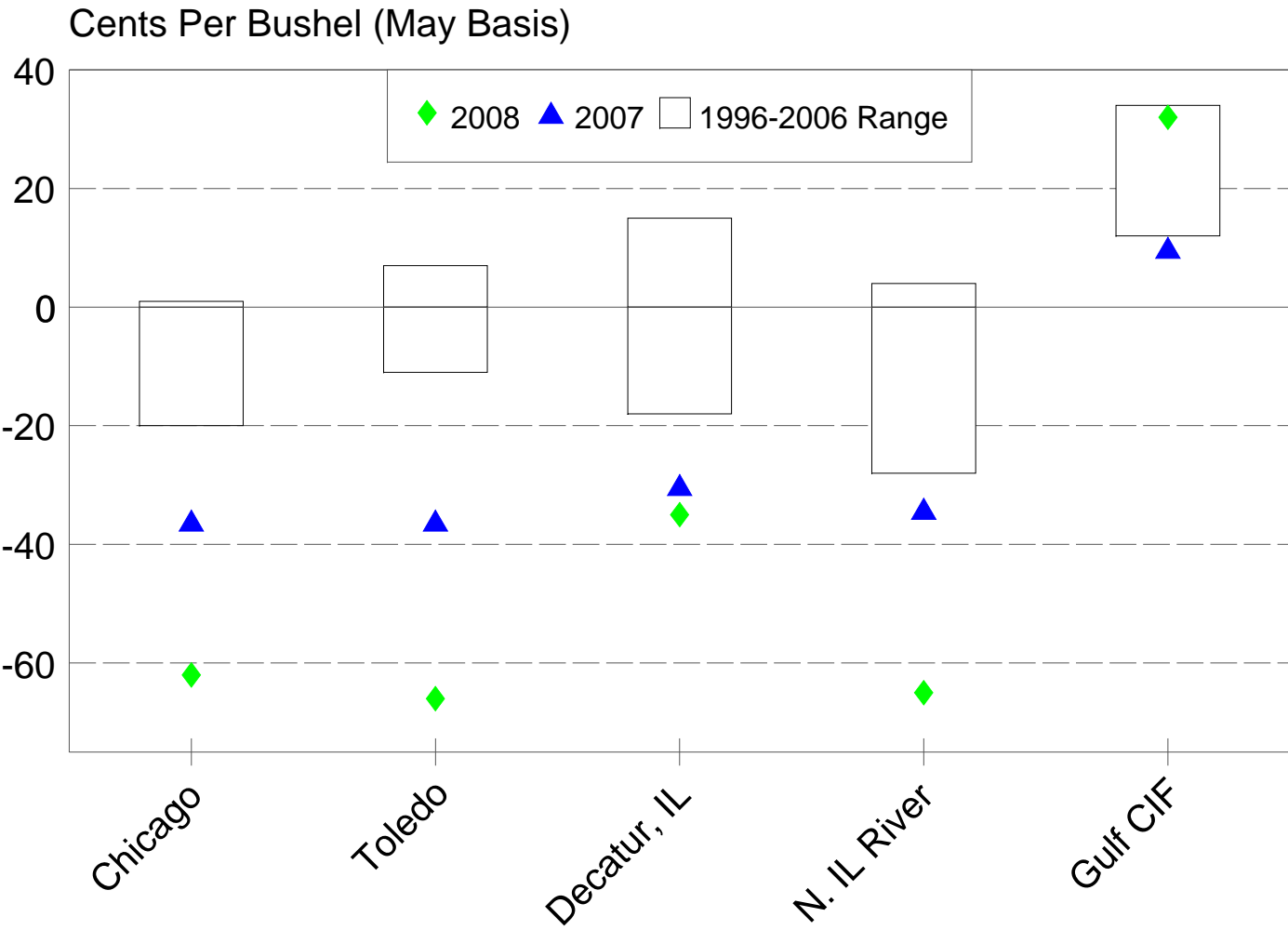


WHEAT BASIS COMPARISONS FOR THE 4TH WEEK OF MARCH 2008, 2007 AND A 2006-1997 RANGE

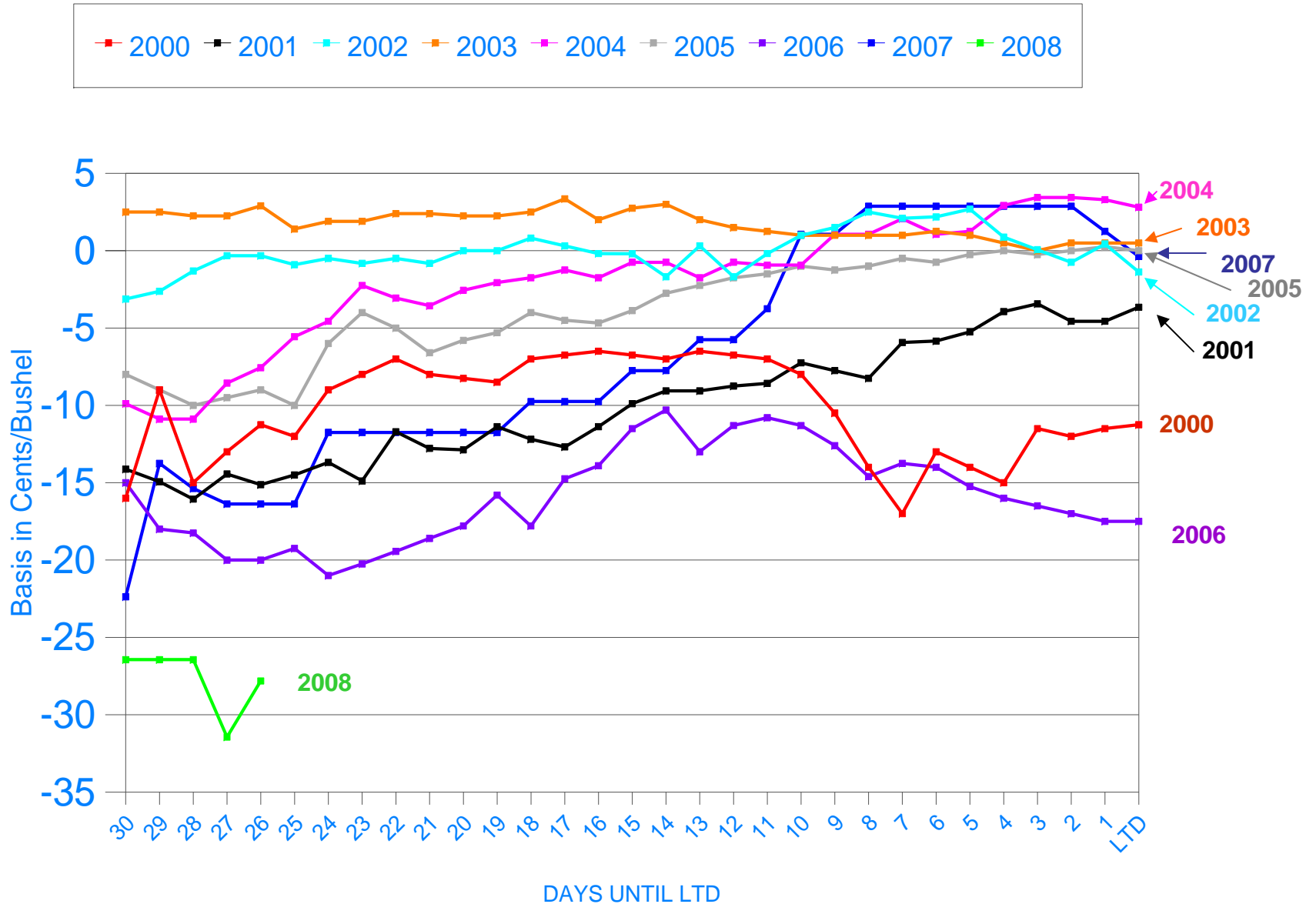


Soybean Basis Comparison for the 4th Week of March

2008, 2007 and the 1996-2006 High/Low Range



CBOT May Corn Basis History

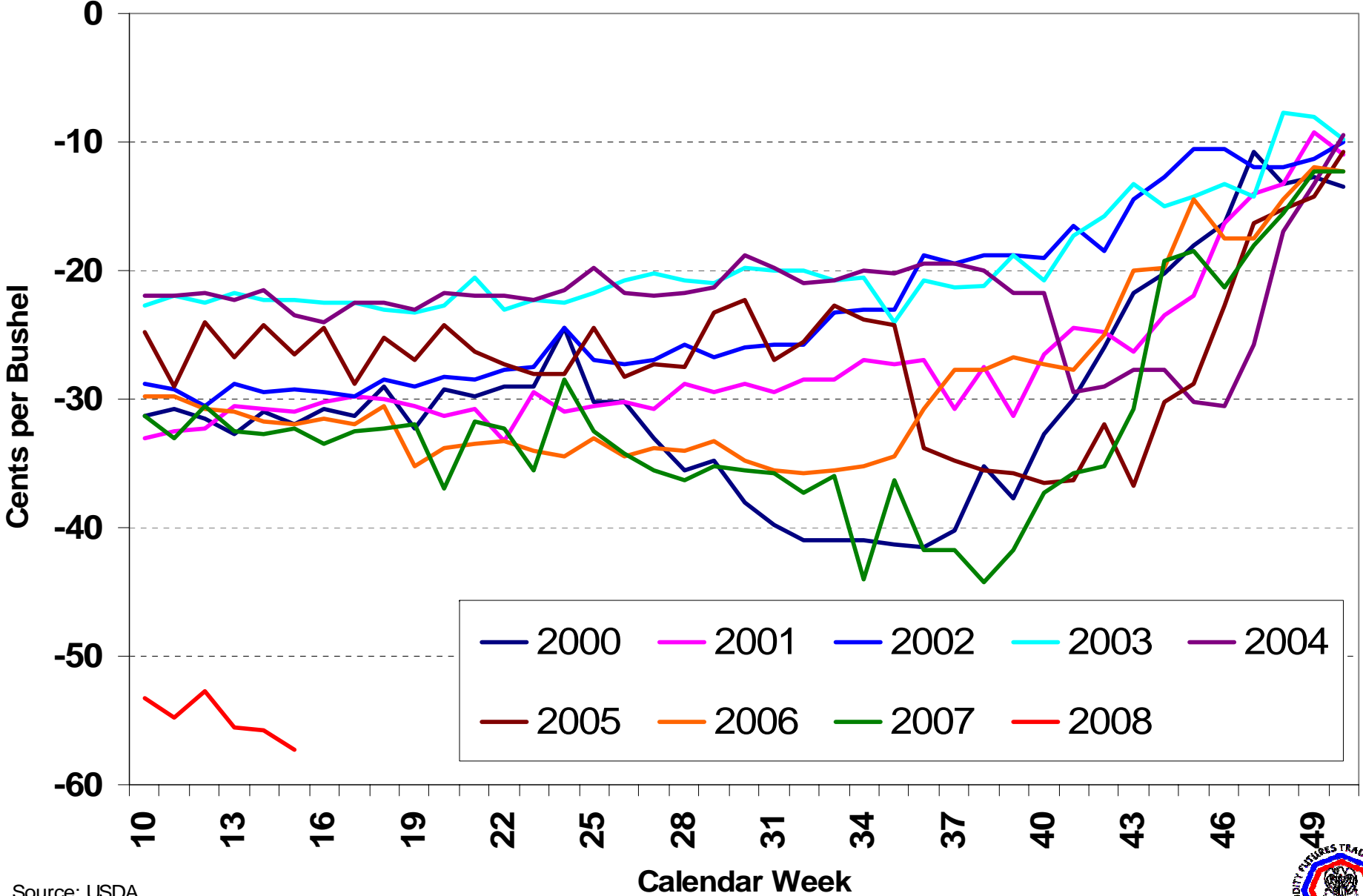


The zero line represents corn loaded in a barge in Zone 1 on the Illinois Waterway Delivery System



New-Crop December Corn Basis History

Weekly USDA Elevator Bids in North Central Illinois

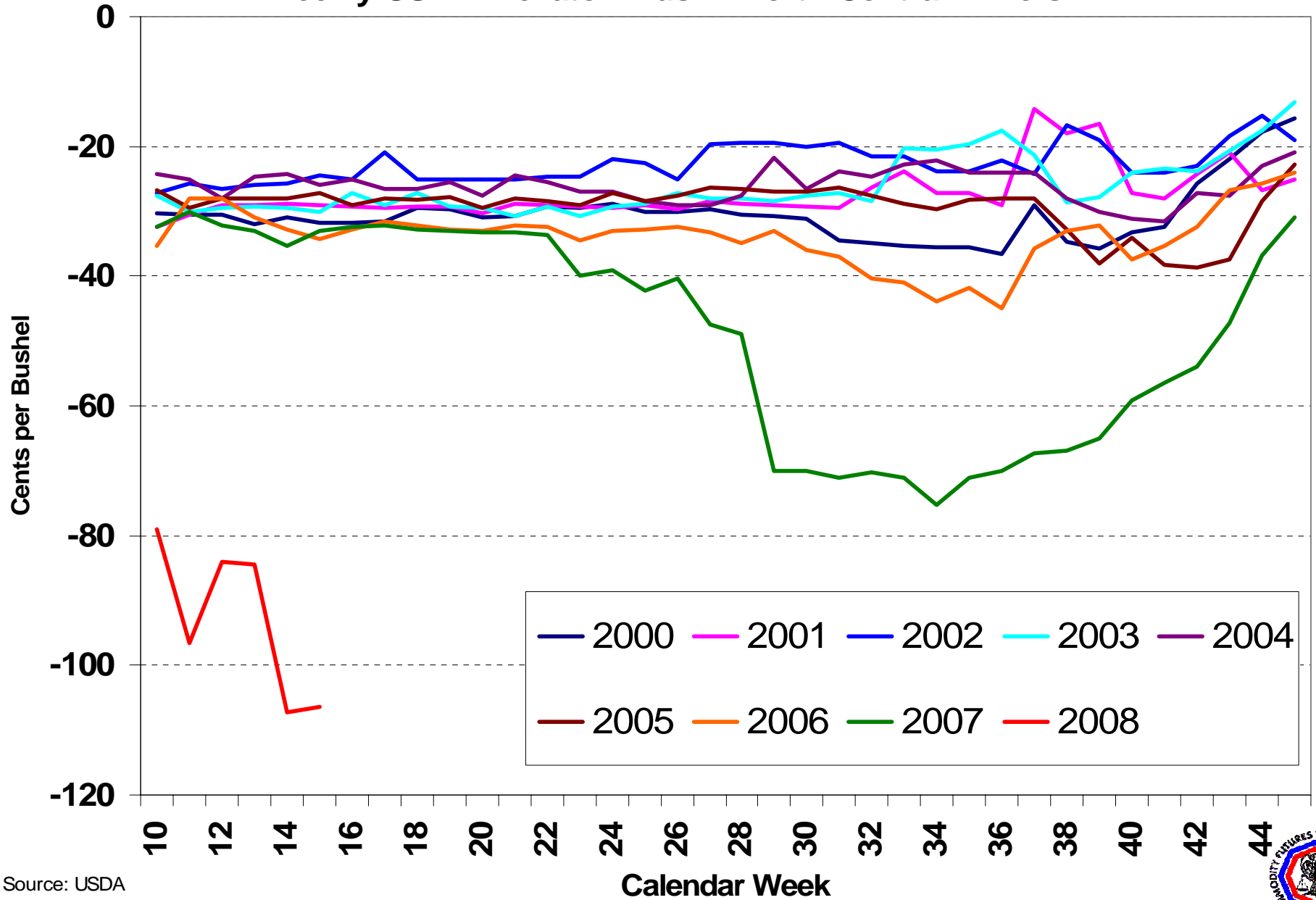


Source: USDA



New-Crop November Soybean Basis History

Weekly USDA Elevator Bids in North Central Illinois

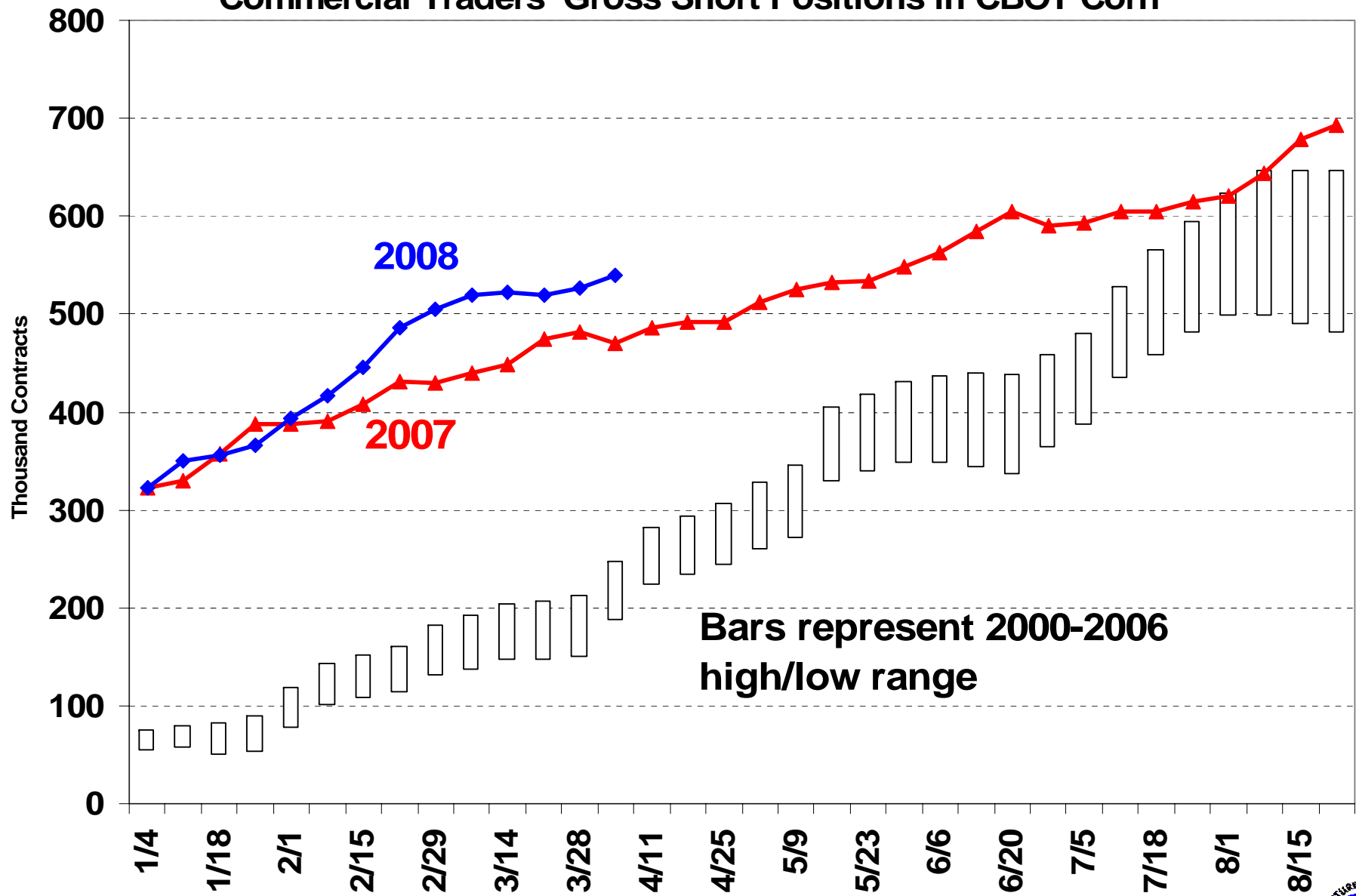


Source: USDA



New-Crop* Corn Hedging

Commercial Traders' Gross Short Positions in CBOT Corn



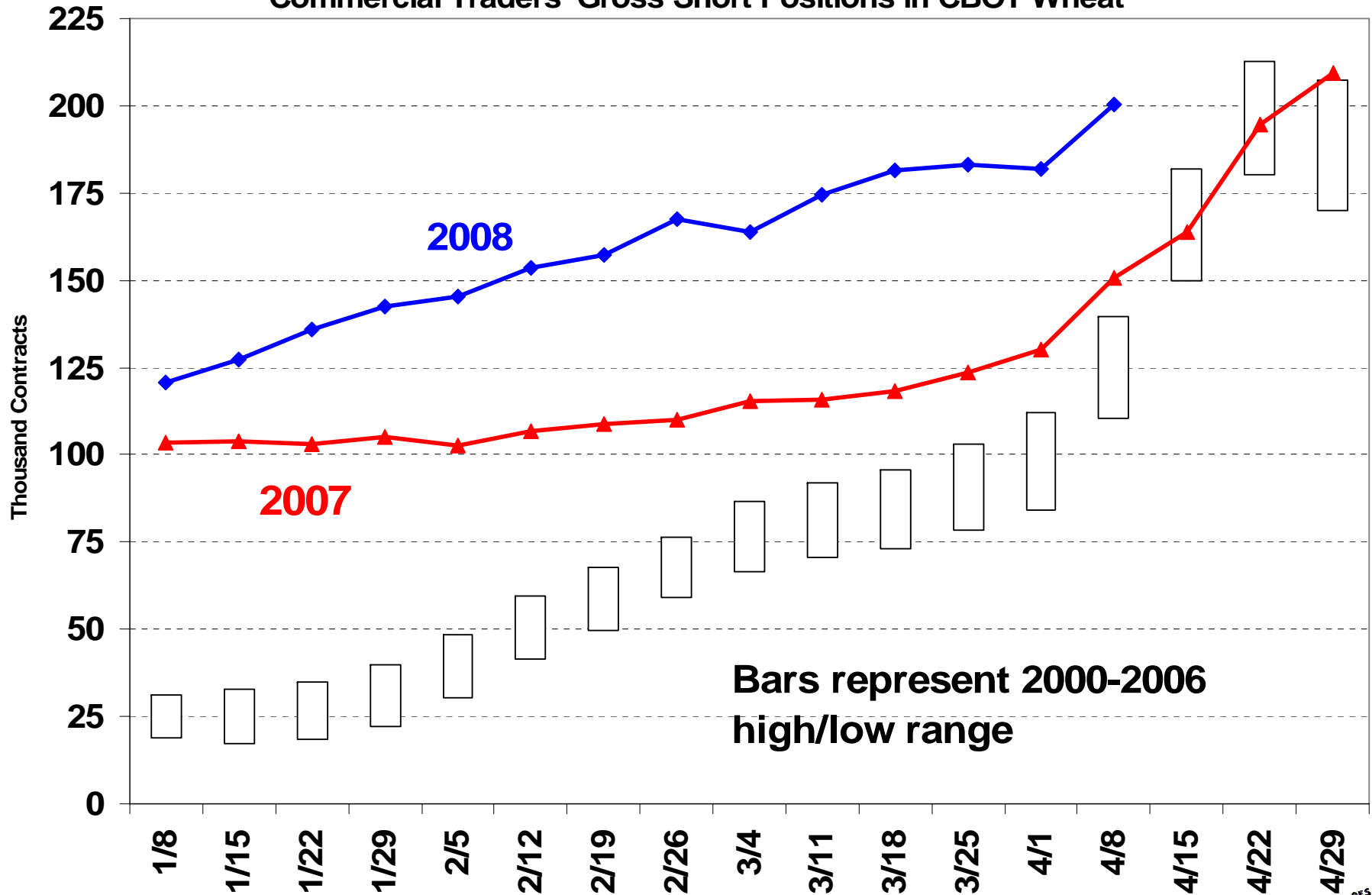
Source: CFTC COT data. * "New-Crop" is Dec future and all subsequent futures.

2008 Dates for Comparison



New-Crop* Wheat Hedging

Commercial Traders' Gross Short Positions in CBOT Wheat



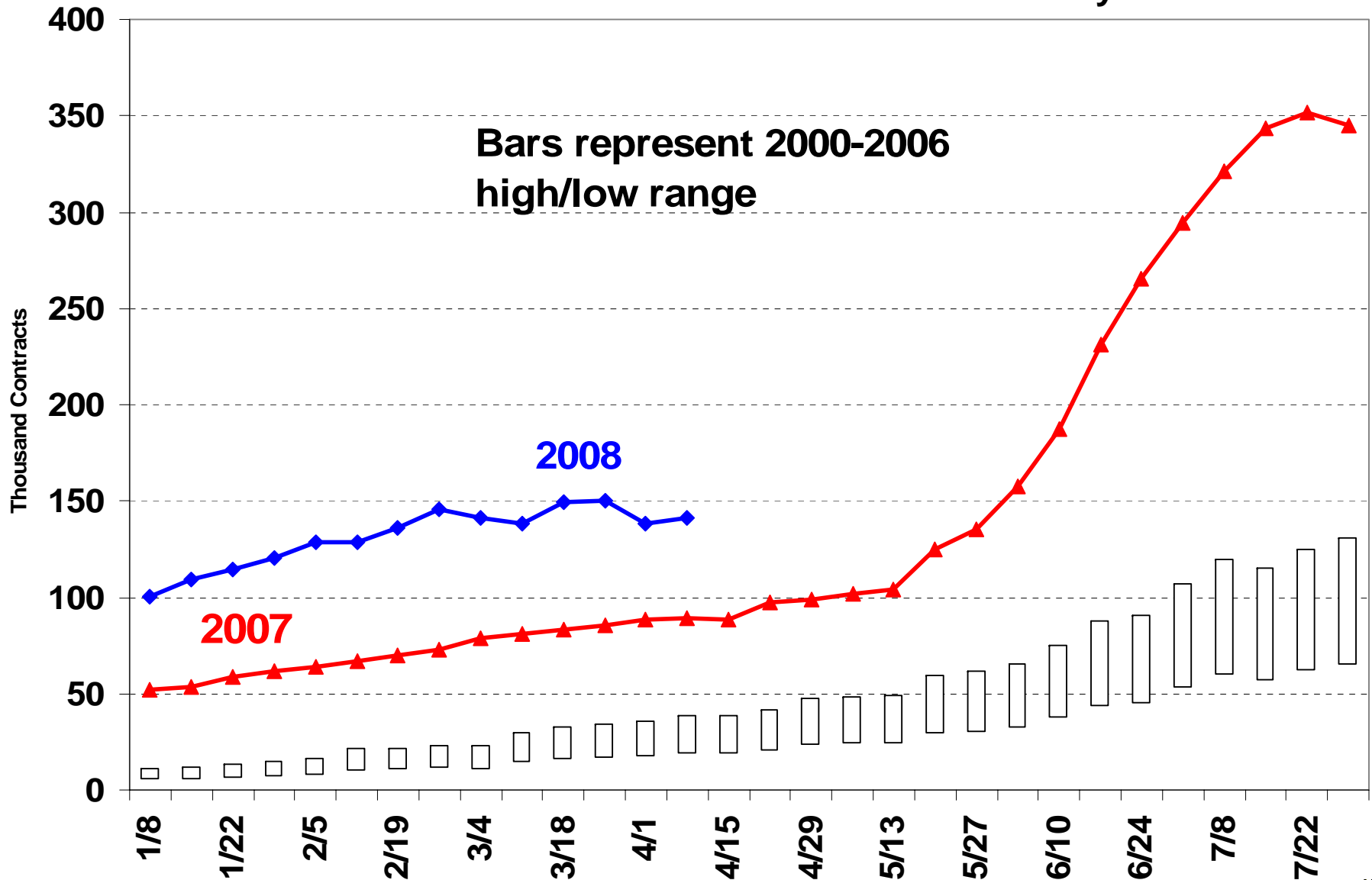
Source: CFTC COT data. * "New-Crop" is July future and all subsequent futures.

2008 Dates for Comparison



New-Crop* Soybean Hedging

Commercial Traders' Gross Short Positions in CBOT Soybeans

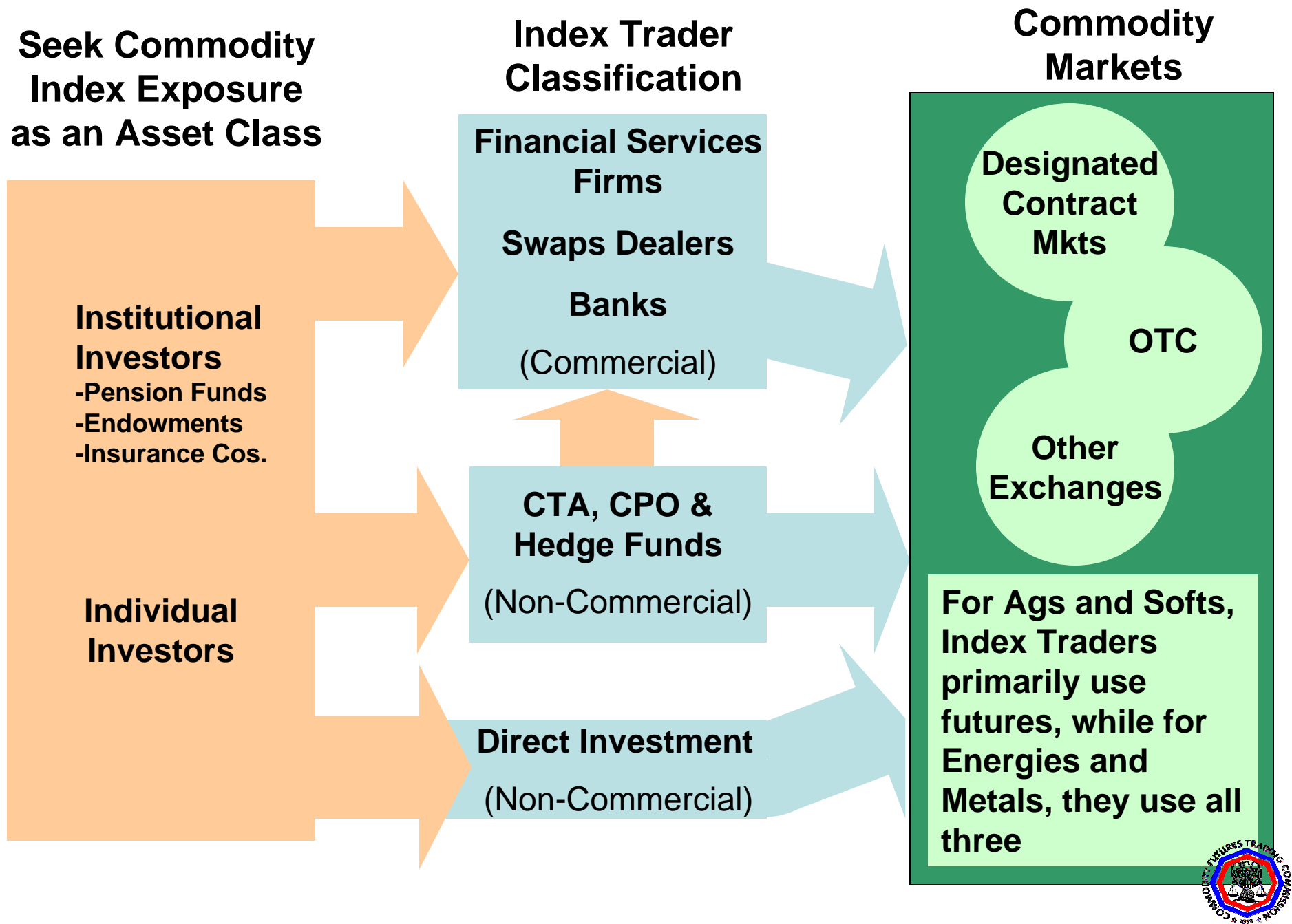


Source: CFTC COT data. * "New-Crop" is Nov future and all subsequent futures.

2008 Dates for Comparison



Commodity Index Futures Trading Overview



COMMITMENTS OF TRADERS

Traditional

WHEAT — CHICAGO BOARD OF TRADE

OPTION AND FUTURES COMBINED POSITIONS AS OF **Apr.8, 2008**

NONCOMMERCIAL			COMMERCIAL		TOTAL		NONREPORTABLE	
LONG	SHORT	SPREADS	LONG	SHORT	LONG	SHORT	LONG	SHORT
(CONTRACTS OF 5,000 BUSHELS)					OPEN INTEREST: 534,053			
COMMITMENTS								
86,352	56,558	170,150	240,720	249,279	497,222	475,987	36,831	58,066
CHANGES FROM Apr. 1, 2008 CHANGE IN OPEN INTEREST: -596								
-1,355	1,905	-6,064	5,871	1,746	-1,548	-2,413	952	1,817
PERCENT OF OPEN INTEREST FOR EACH CATEGORY OF TRADERS								
16.2	10.6	31.9	45.1	46.7	93.1	89.1	6.9	10.9
NUMBER OF TRADERS IN EACH CATEGORY (TOTAL TRADERS: 372)								
91	134	157	91	127	292	322		



COMMITMENTS OF TRADERS

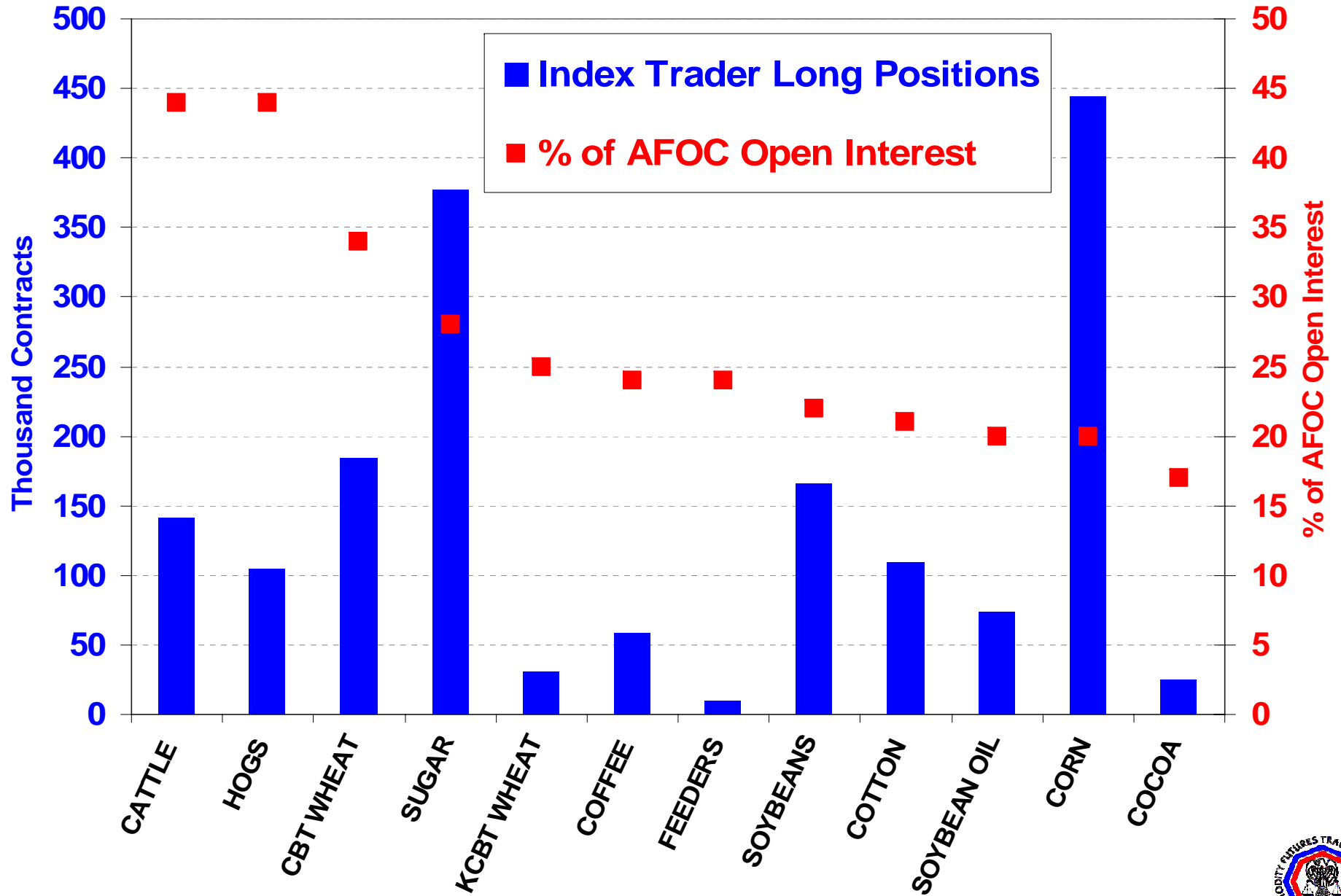
Supplemental with Commodity Index Traders

WHEAT — CHICAGO BOARD OF TRADE										
OPTIONS AND FUTURES COMBINED POSITIONS AS OF Apr. 8, 2008										
NONCOMMERCIAL			COMMERCIAL		INDEX TRADERS		TOTAL		NONREPORTABLE	
LONG	SHORT	SPREADS	LONG	SHORT	LONG	SHORT	LONG	SHORT	LONG	SHORT
(CONTRACTS OF 40,000 LBS)			OPEN INTEREST: 534,053							
COMMITMENTS										
56,123	55,646	168,914	56,491	219,817	215,695	31,611	497,222	475,987	36,831	58,066
			-30,229		-184,229					
CHANGES FROM APR. 1, 2008					CHANGE IN OPEN INTEREST: -596					
-1,451	1,905	-5,617	-808	864	6,328	435	-1,548	-2,413	952	1,817
PERCENT OF OPEN INTEREST FOR EACH CATEGORY OF TRADERS										
10.5	10.4	31.6	10.6	41.2	40.4	5.9	93.1	89.1	6.9	10.9
NUMBER OF TRADERS IN EACH CATEGORY (TOTAL TRADERS: 372)										
80	133	152	77	114	25	19	292	322		



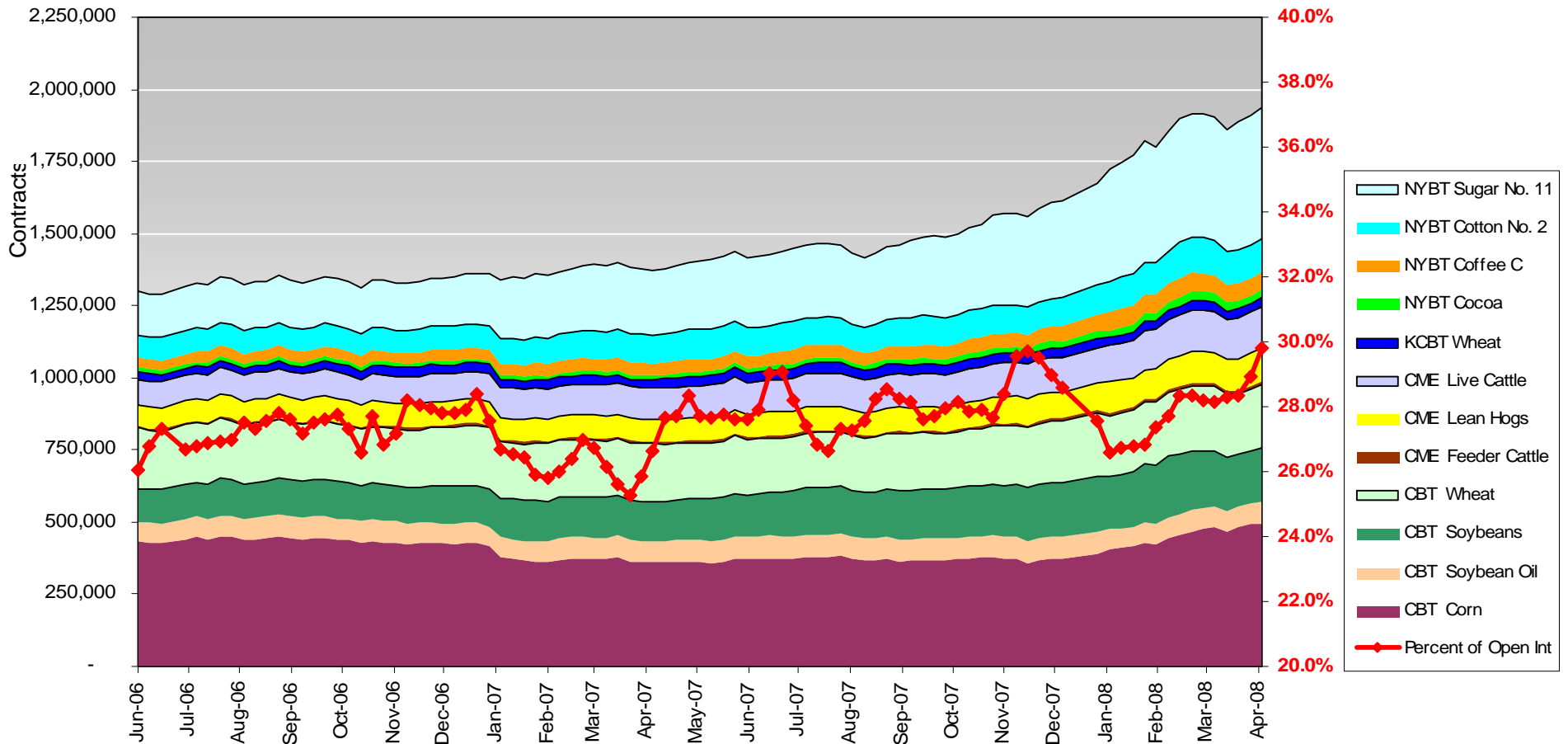
Index Traders' Net Long Positions for COT Supplemental Commodities

All Futures and Options (Delta Adjusted) Combined on 4/8/08



Commodity Index Trading In Agricultural Markets

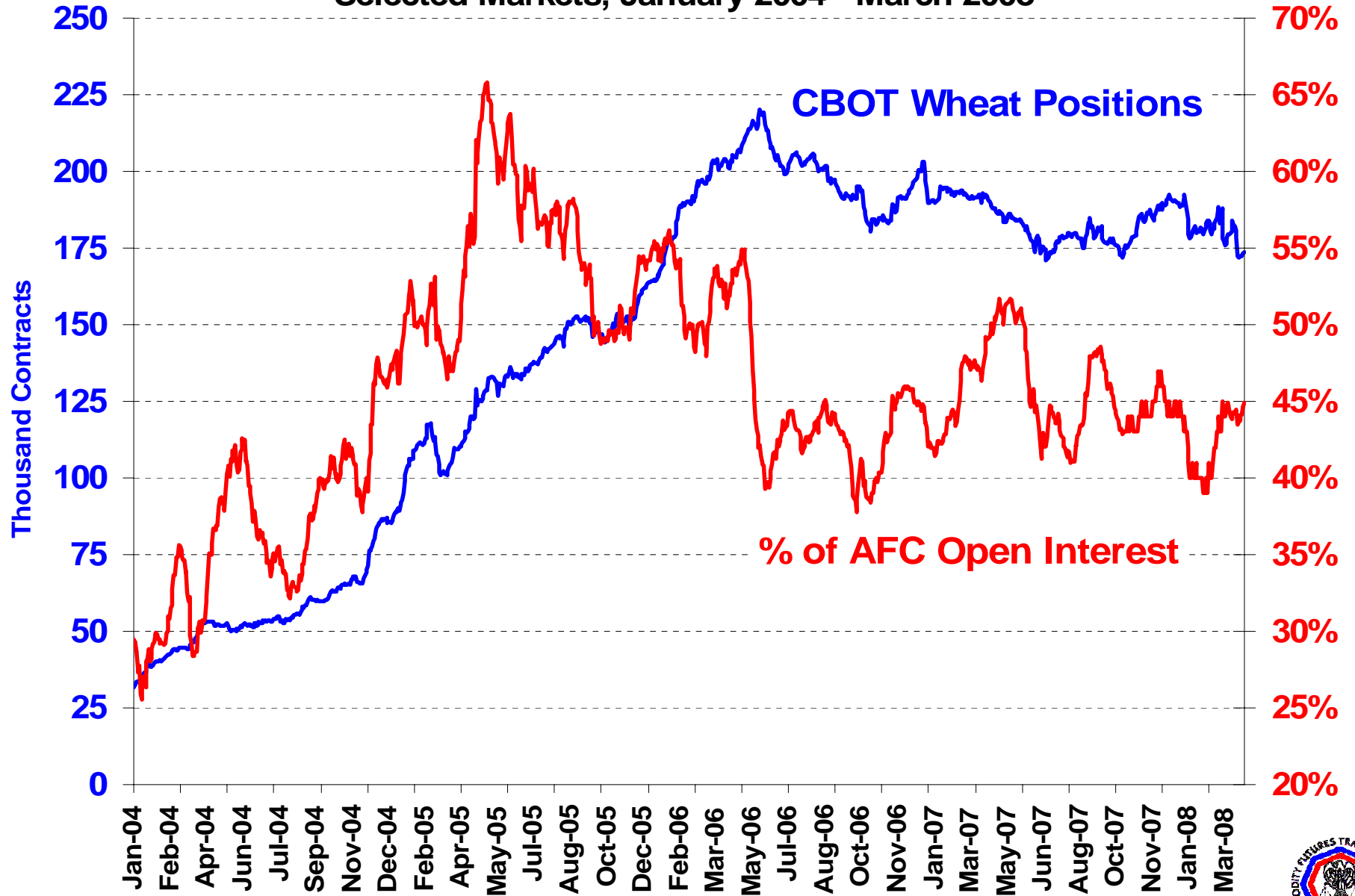
June 2006 to April 2008



Wheat Index Traders' Positions and % of Open Interest

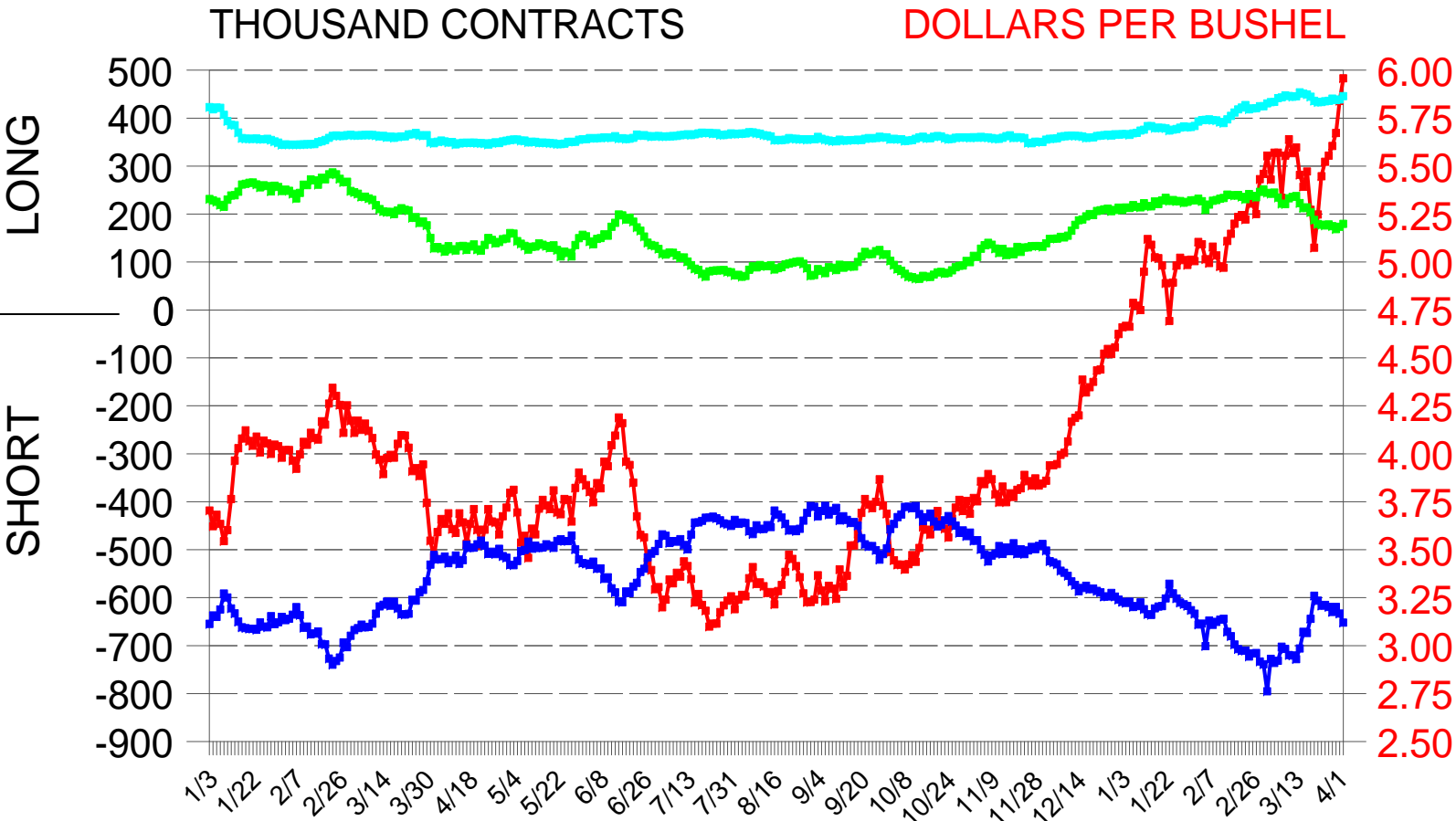
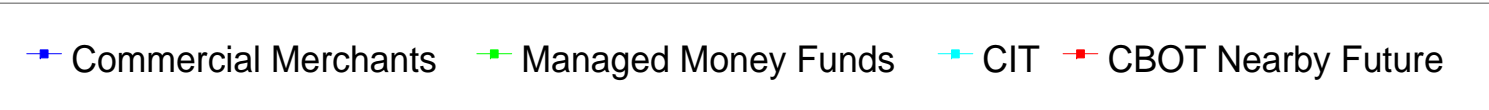
All Futures Combined Net Long

Selected Markets, January 2004 - March 2008



CBOT Corn Market Composition January 2007 Through April 2, 2008

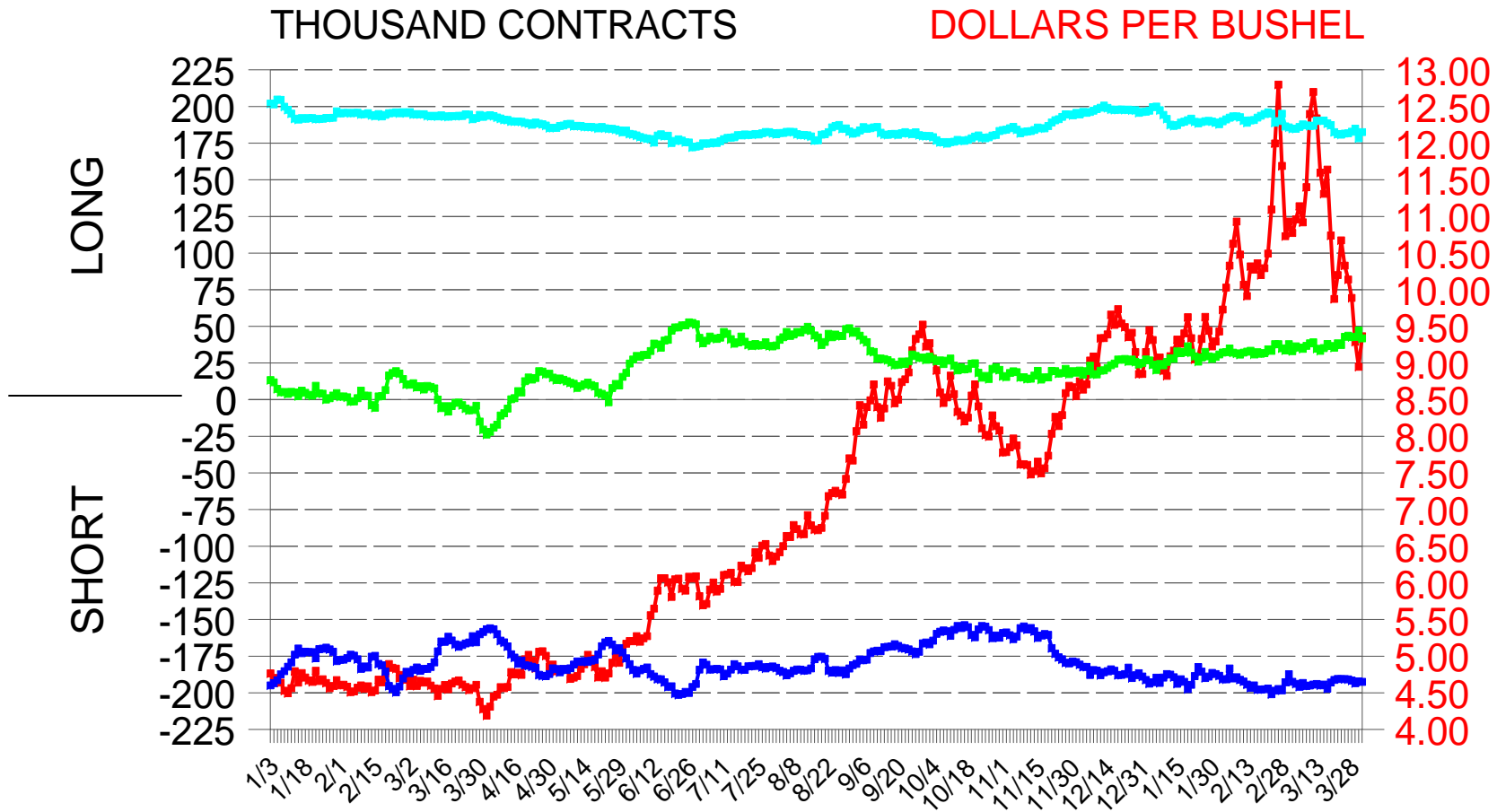
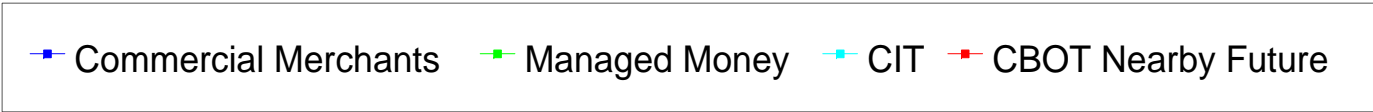
Reportable AFOC Net Daily Positions



COMMERCIAL MERCHANTS = PHYSICAL HANDLER OF GRAIN
 MANAGED MONEY FUNDS = REGISTRATION CODE OF CTA, CPO, OR MANAGED MONEY
 CIT = COMMODITY INDEX TRADER. AFOC = ALL FUTURES AND OPTIONS COMBINED. OPTIONS AS FUTURES EQUIVALENT



CBOT Wheat Market Composition January 2007 Through April 2, 2008 Reportable AFOC Net Daily Positions

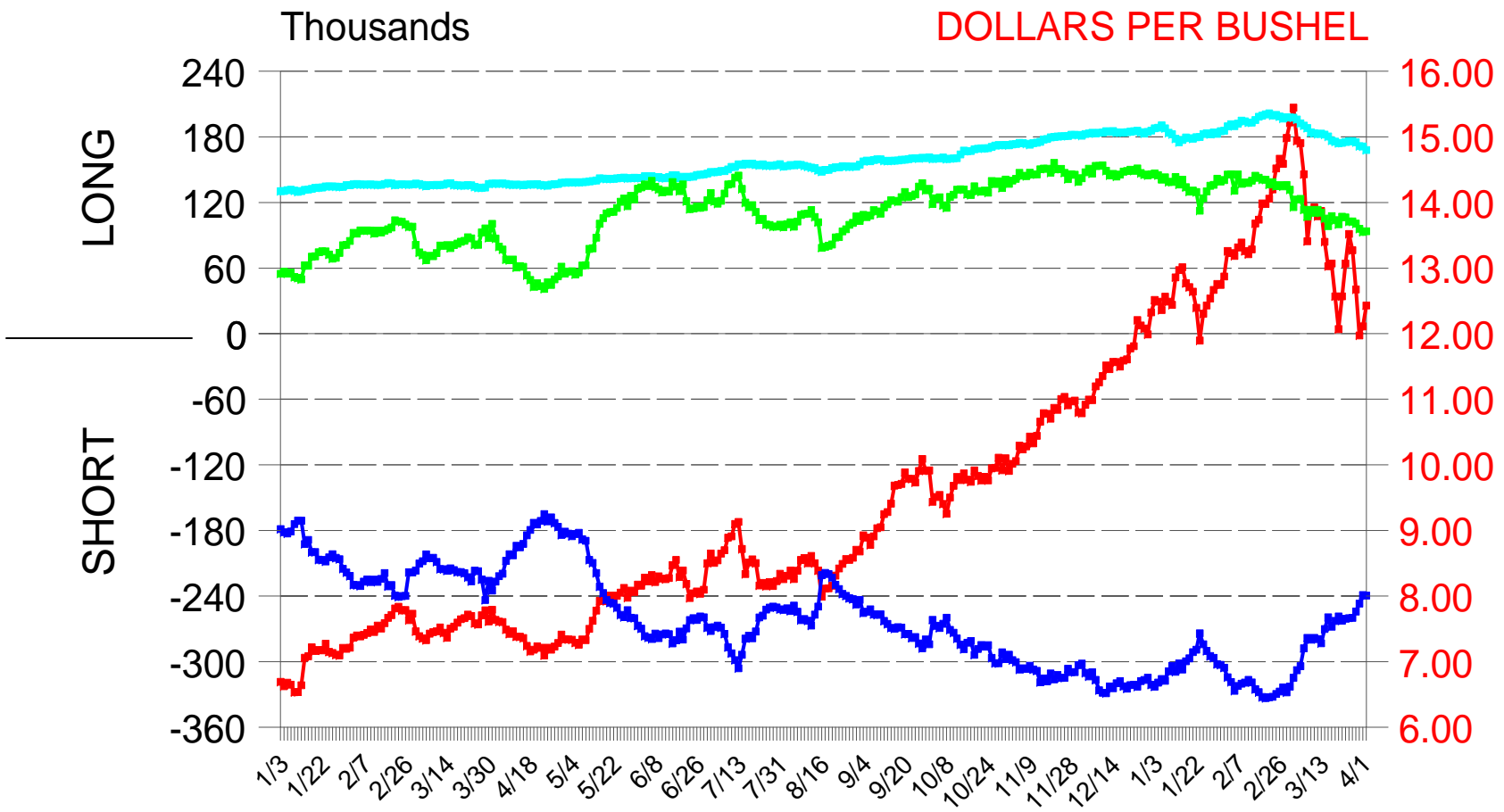
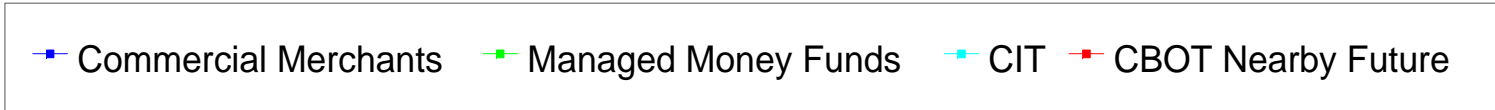


COMMERCIAL MERCHANT = PHYSICAL HANDLER OF GRAIN
 MANAGED MONEY = USE CODE OF CPO/CTA/MM
 CIT = COMMODITY INDEX TRADER. AFOC = ALL FUTURES AND OPTIONS COMBINED. OPTIONS AS FUTURES EQUIVALENT



CBOT Soybean Market Composition January 2007 Through April 2, 2008

Reportable AFOC Net Daily Positions

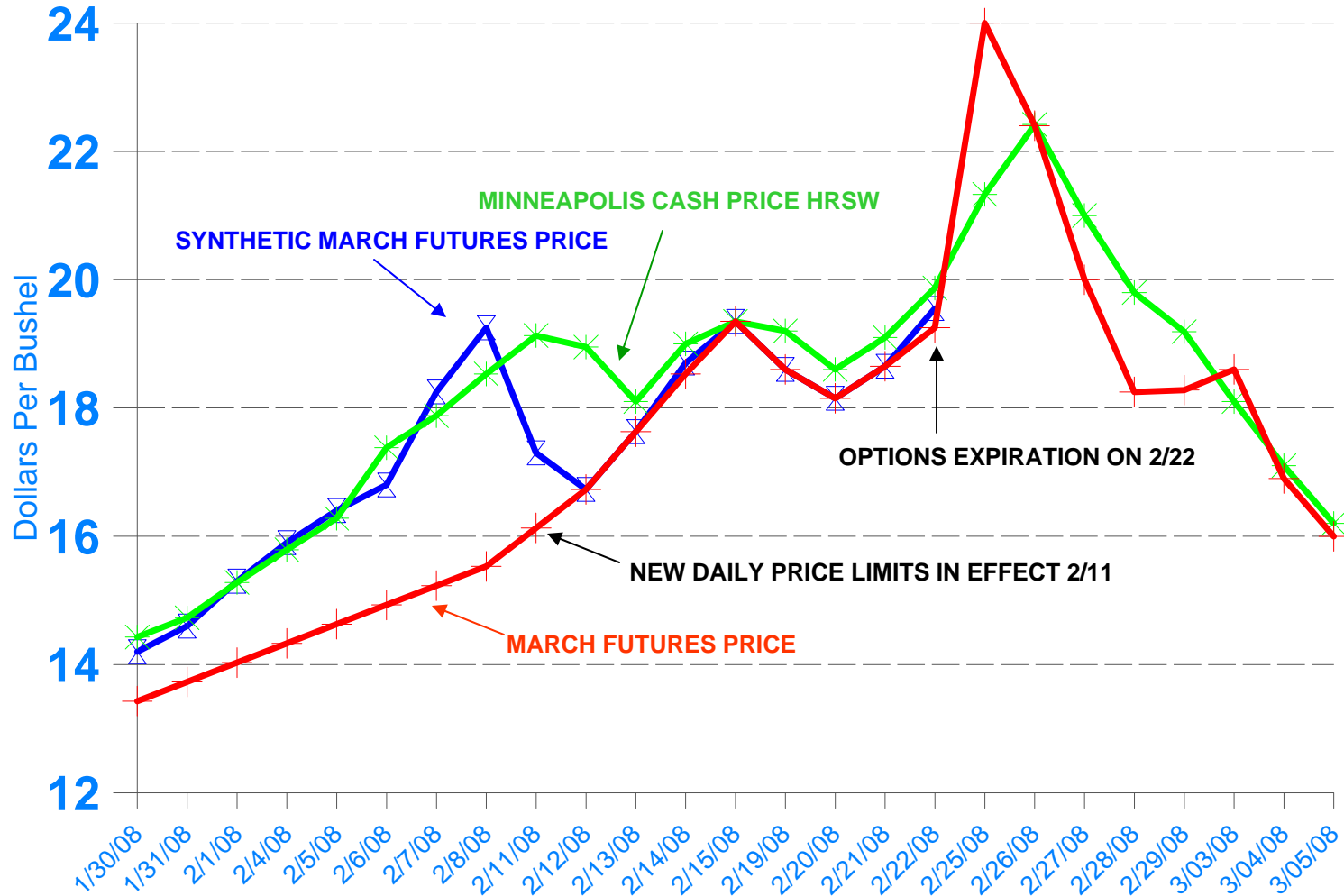


COMMERCIAL MERCHANTS = PHYSICAL HANDLER OF GRAIN
 MANAGED MONEY FUNDS = REGISTRATION CODE OF CTA, CPO, OR MANAGED MONEY
 CIT = COMMODITY INDEX TRADER. AFOC = ALL FUTURES AND OPTIONS COMBINED. OPTIONS AS FUTURES EQUIVALENT



MGEX MARCH WHEAT FUTURES LIQUIDATION

1/30/08 THROUGH 3/5/08



SYNTHETIC FUTURE IS CALCULATED BASED ON OPTION TRADING



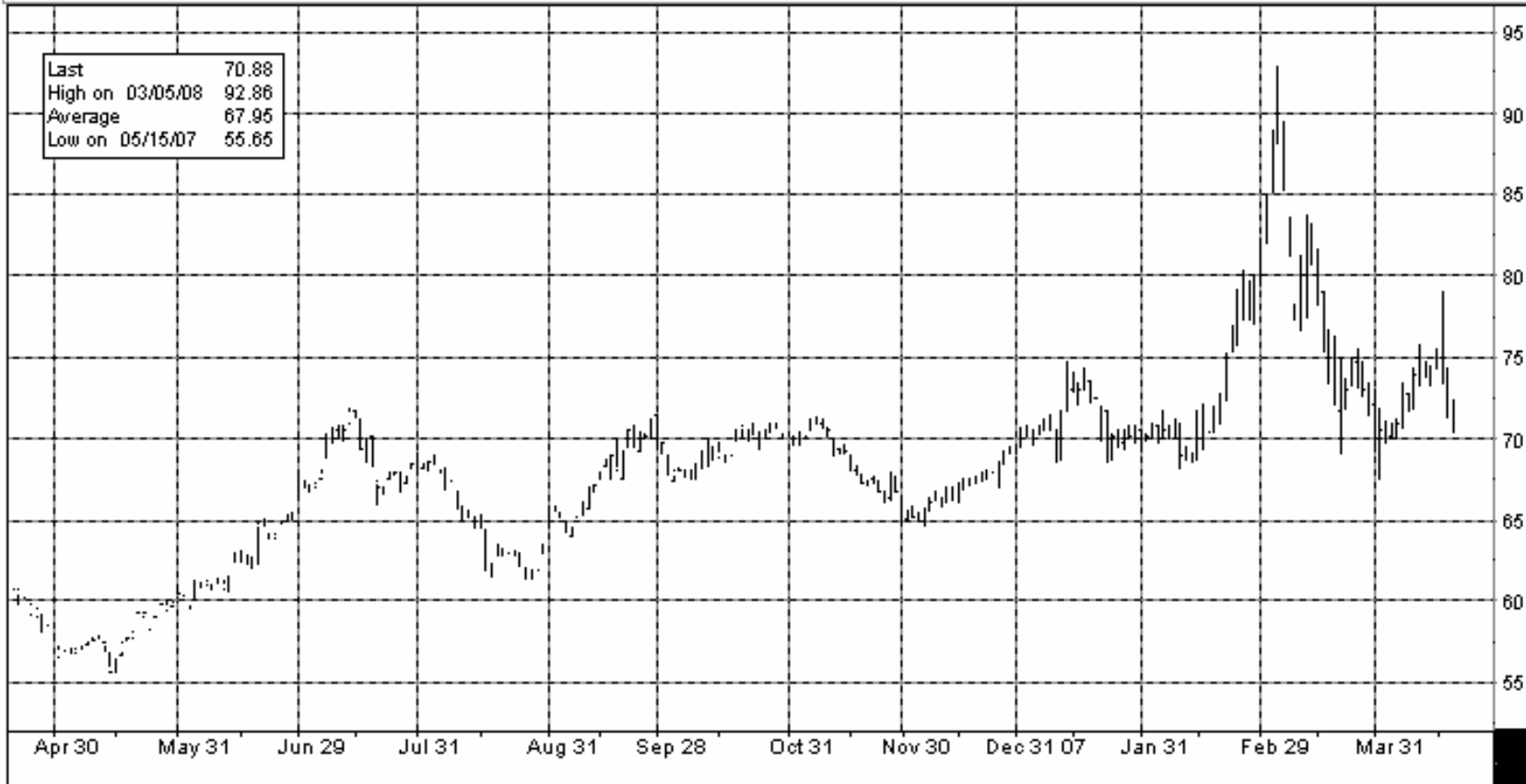
May 2008 – ICE Futures U.S. Cotton

CTK8 ↓ **70.88** -.87 Y 70.86/70.94 Y 11x1
 At 10:16 Vol 975 Op 72.20 Hi 72.29 Lo 70.21 Prev 71.75

Comdty **GPO**

CTK8 COMDTY Hide GPO - Bar Chart Page 1/19
 Range 04/18/07 - 04/18/08 Upper Bar Chart Mov. Avgs Currency USD
 Period Daily Lower None Mov. Avg 15

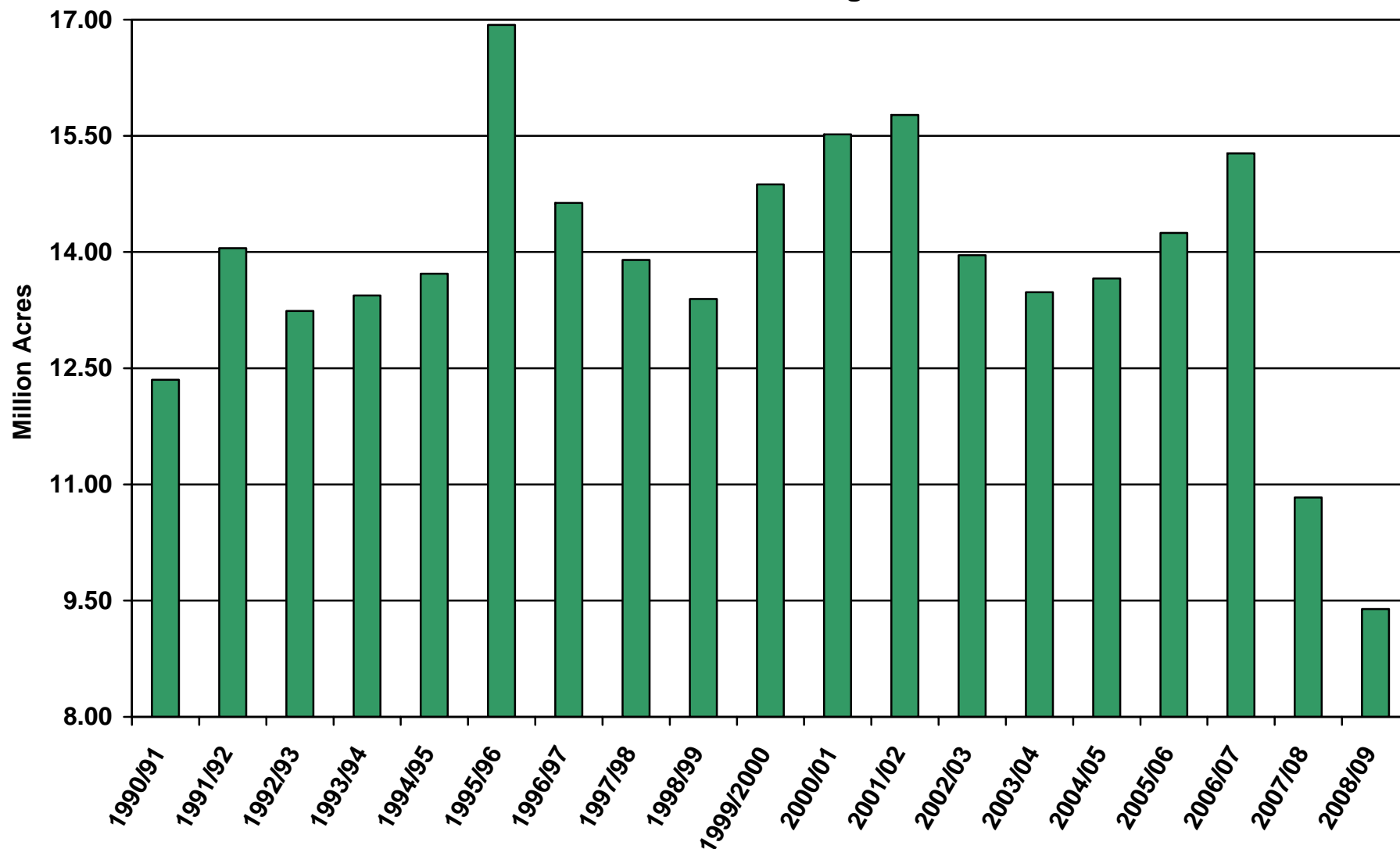
Last	70.88
High on 03/05/08	92.86
Average	67.95
Low on 05/15/07	55.65



Australia 61 2 9777 8600 Brazil 5511 3048 4500 Europe 44 20 7330 7500 Germany 49 69 9204 1210 Hong Kong 852 2977 6000
 Japan 81 3 3201 8900 Singapore 65 6212 1000 U.S. 1 212 318 2000 Copyright 2008 Bloomberg Finance L.P.
 6718-728-0 18-Apr-2008 10:16:27



U.S. All Cotton Plantings

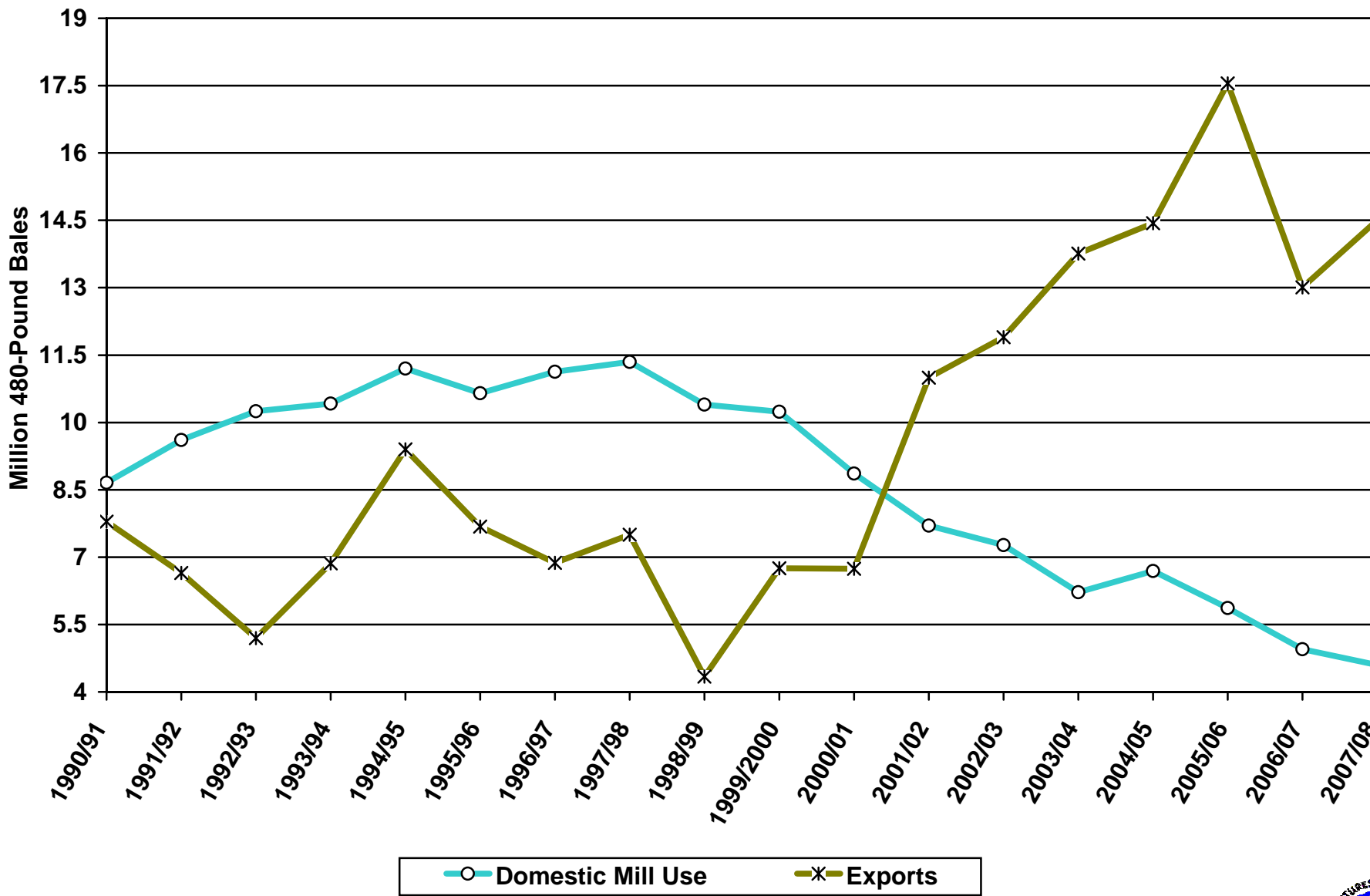


Source: USDA Economic Research Service.

Note: 2006/07 data is a USDA estimate. 2007/08 data is a USDA projection. 2008/09 data represents prospective plantings from National Agricultural Statistics Service (NASS), USDA dated March 31, 2008. The marketing year begins on August 1.



Components of U.S. Cotton Total Use

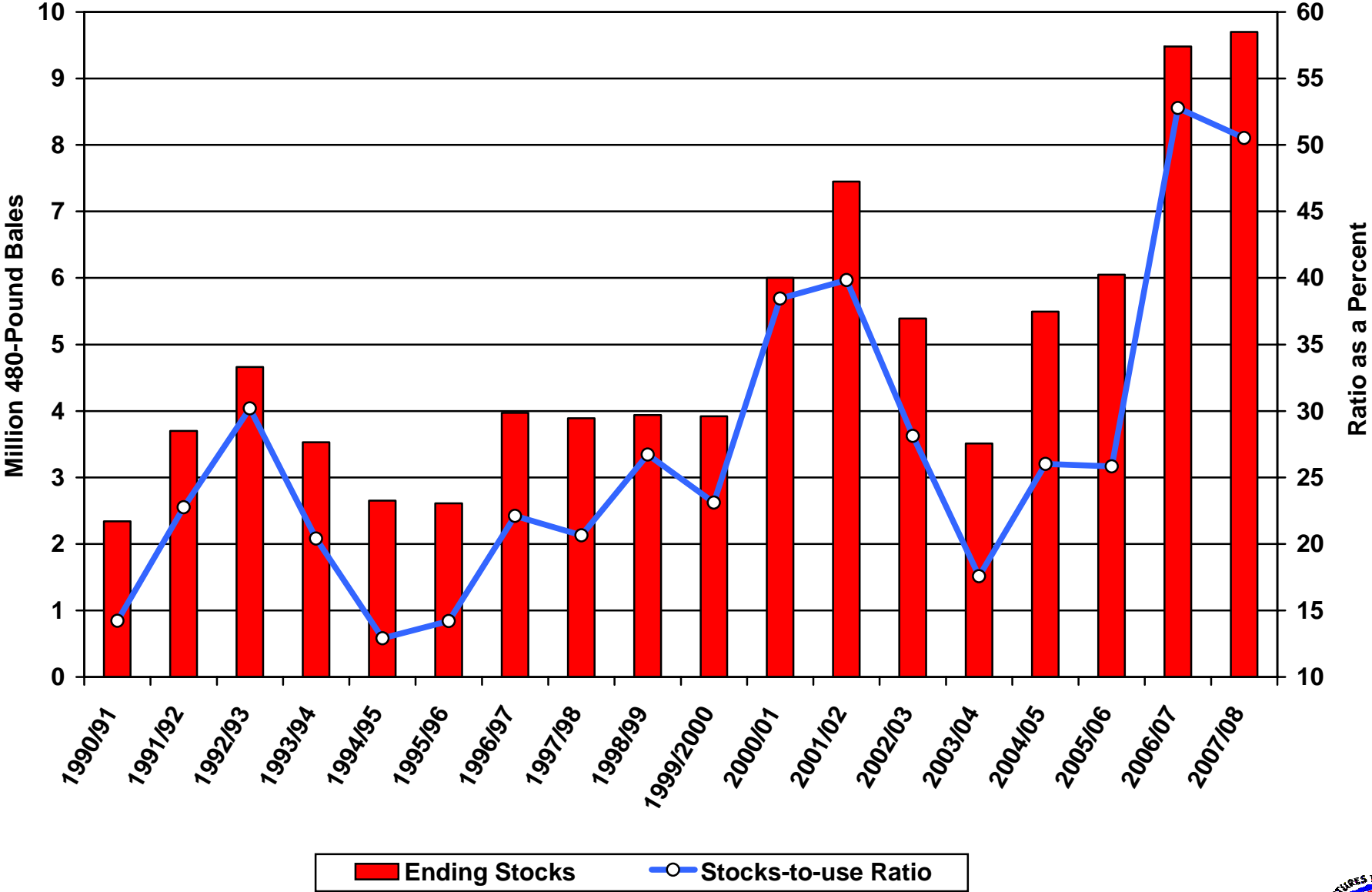


Source: USDA Economic Research Service.

Note: 2006/07 data is a USDA estimate. 2007/08 data is a USDA projection. The marketing year begins on August 1.



U.S. Cotton Ending Stocks and Stocks-to-use Ratio

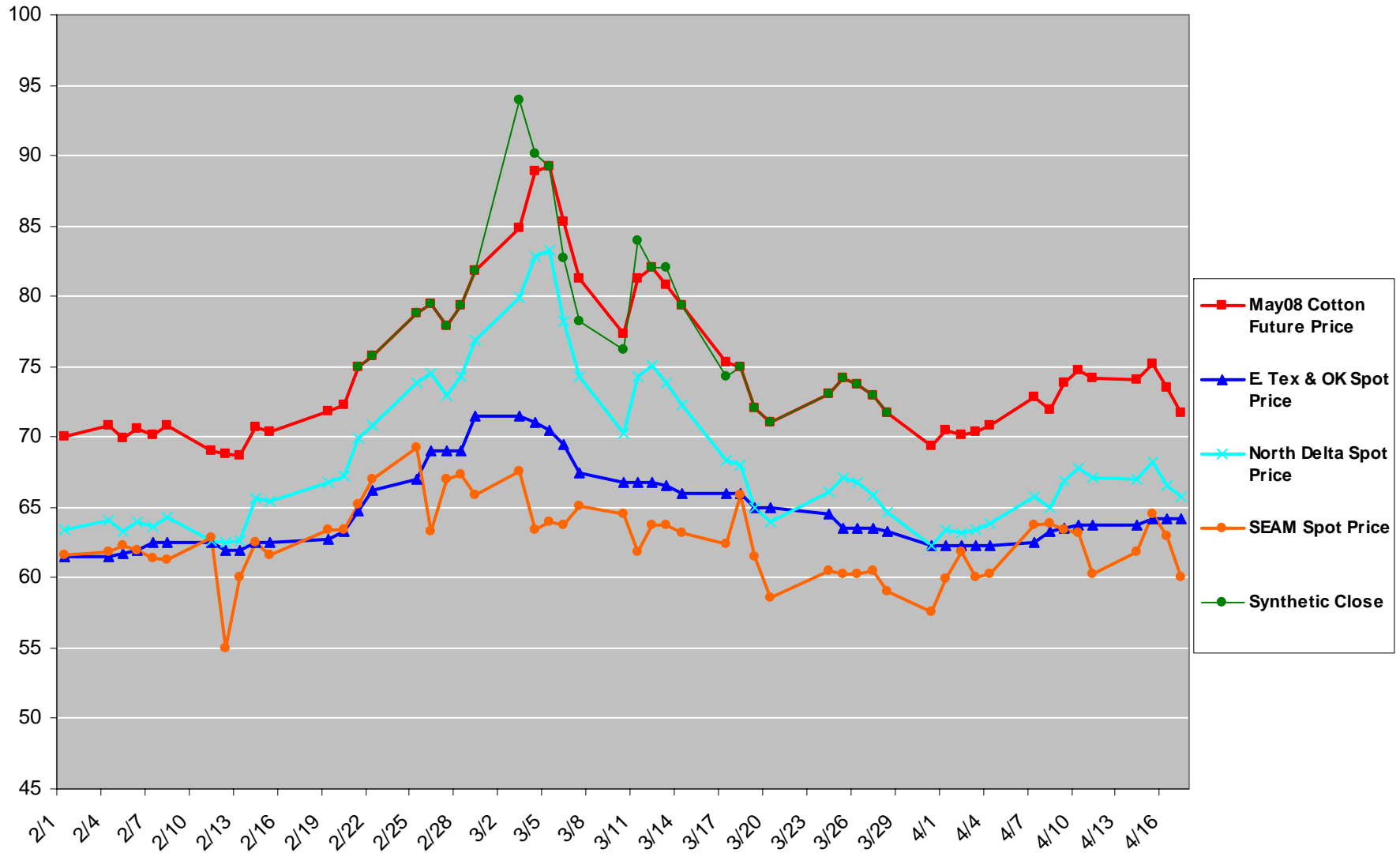


Source: USDA Economic Research Service.

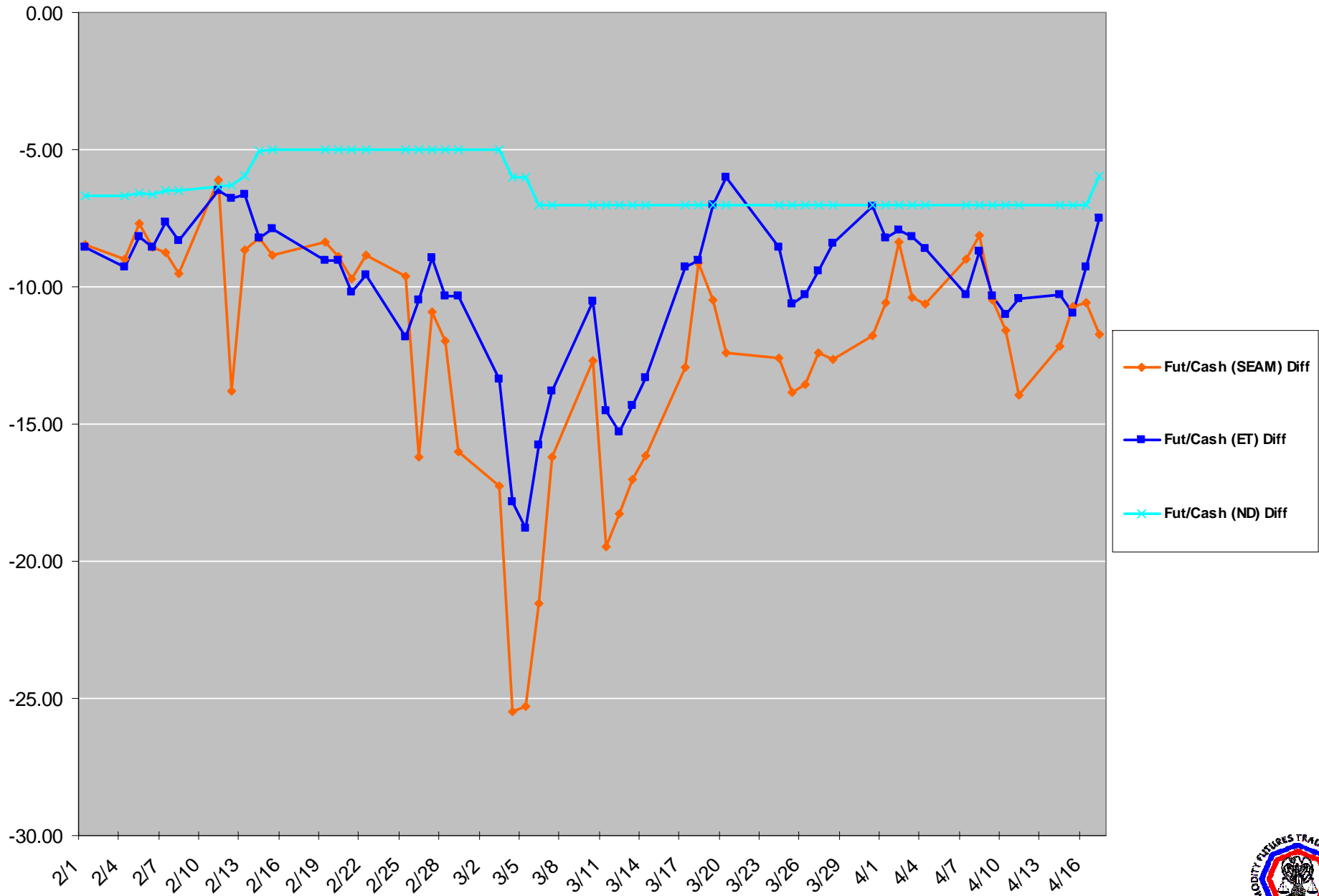
Note: 2006/07 data is a USDA estimate. 2007/08 data is a USDA projection. The marketing year begins on August 1.



May 08 Cotton Futures and Spot Prices



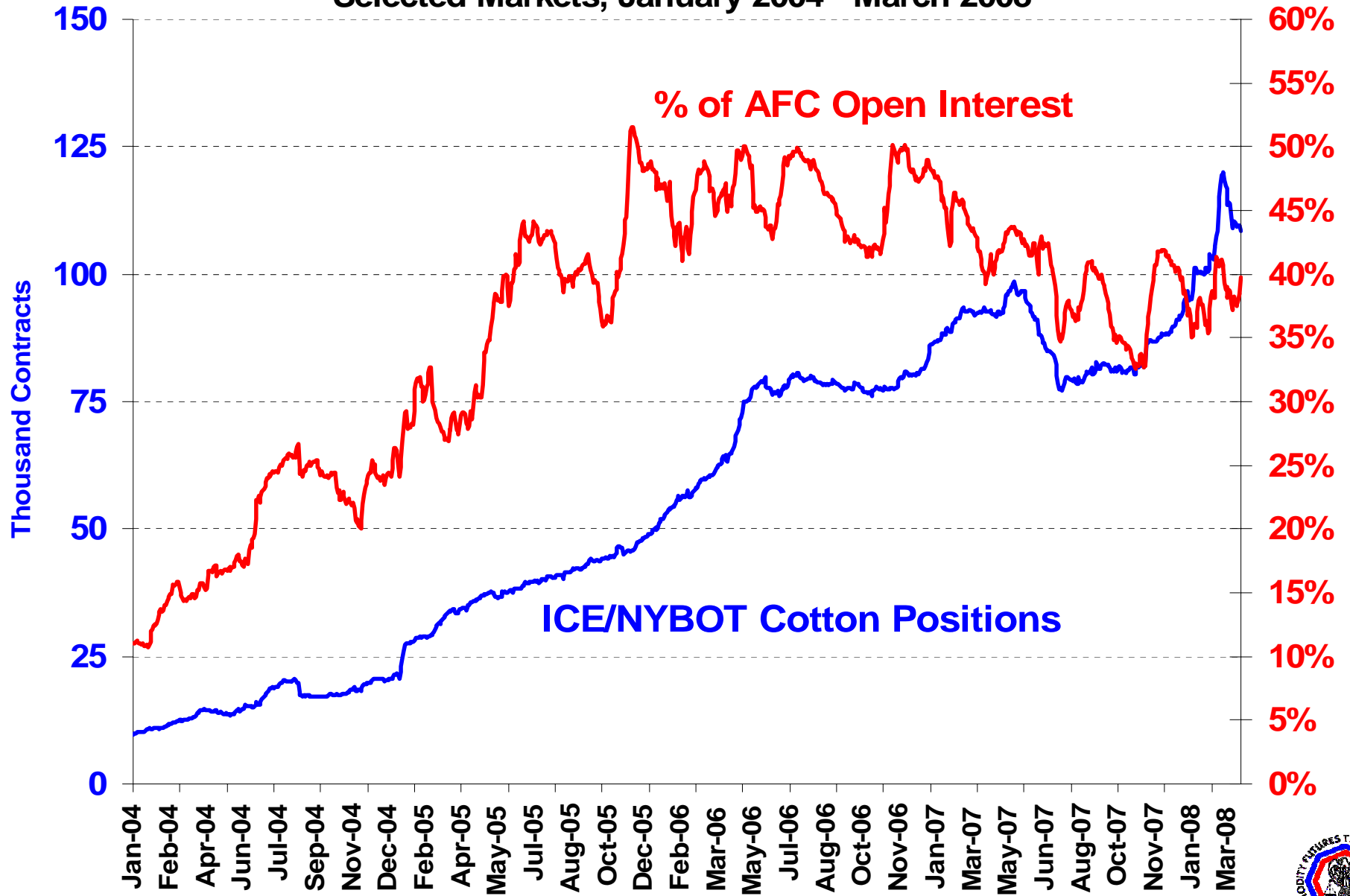
Cotton Basis (Cash - Futures)



Cotton Index Traders' Positions and % of Open Interest

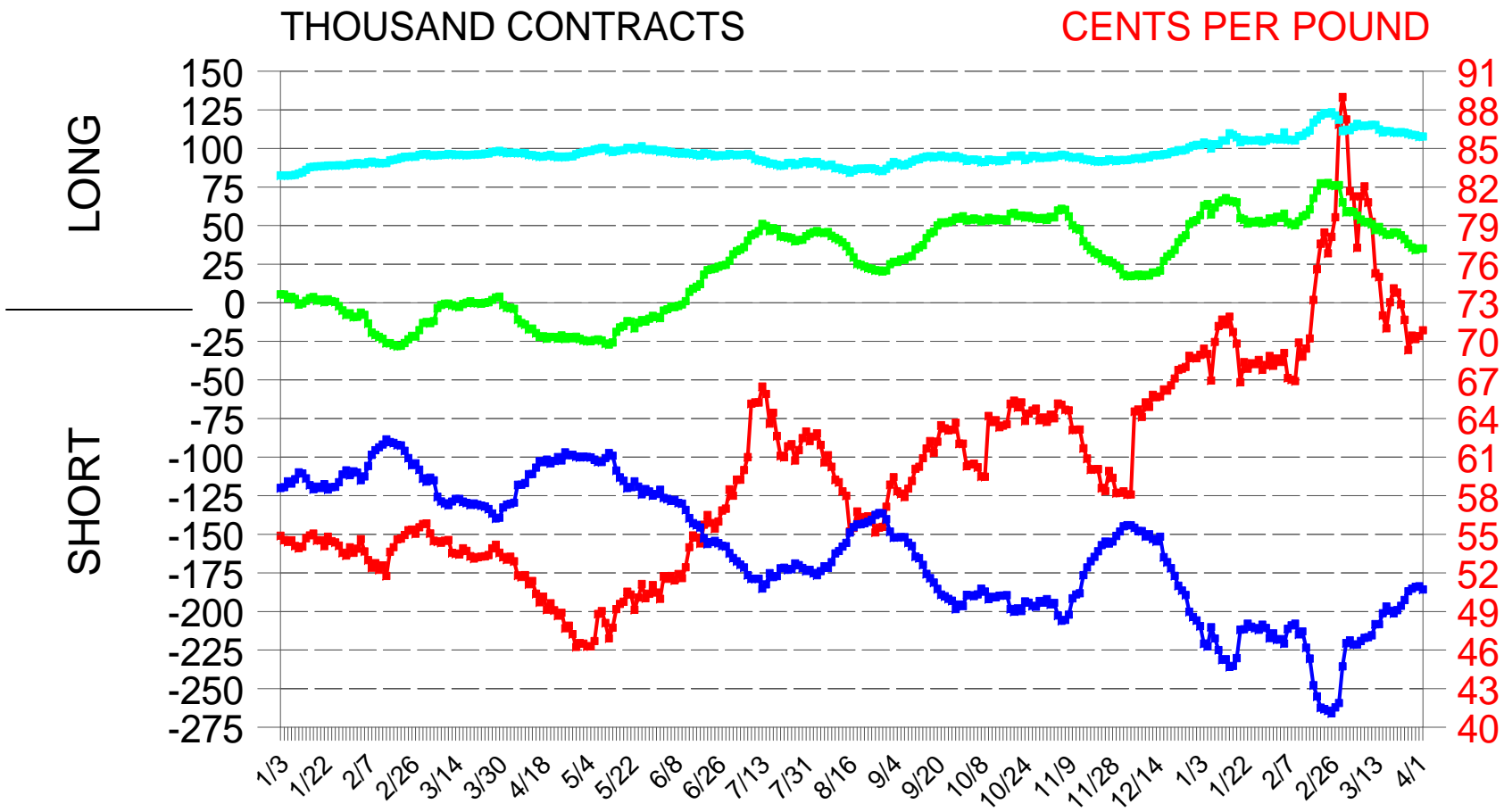
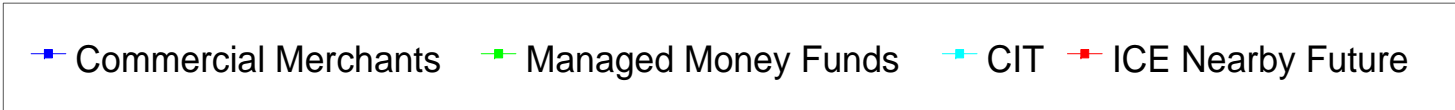
All Futures Combined Net Long

Selected Markets, January 2004 - March 2008



ICE Cotton Market Composition January 2007 Through April 2, 2008

Reportable AFOC Net Daily Positions

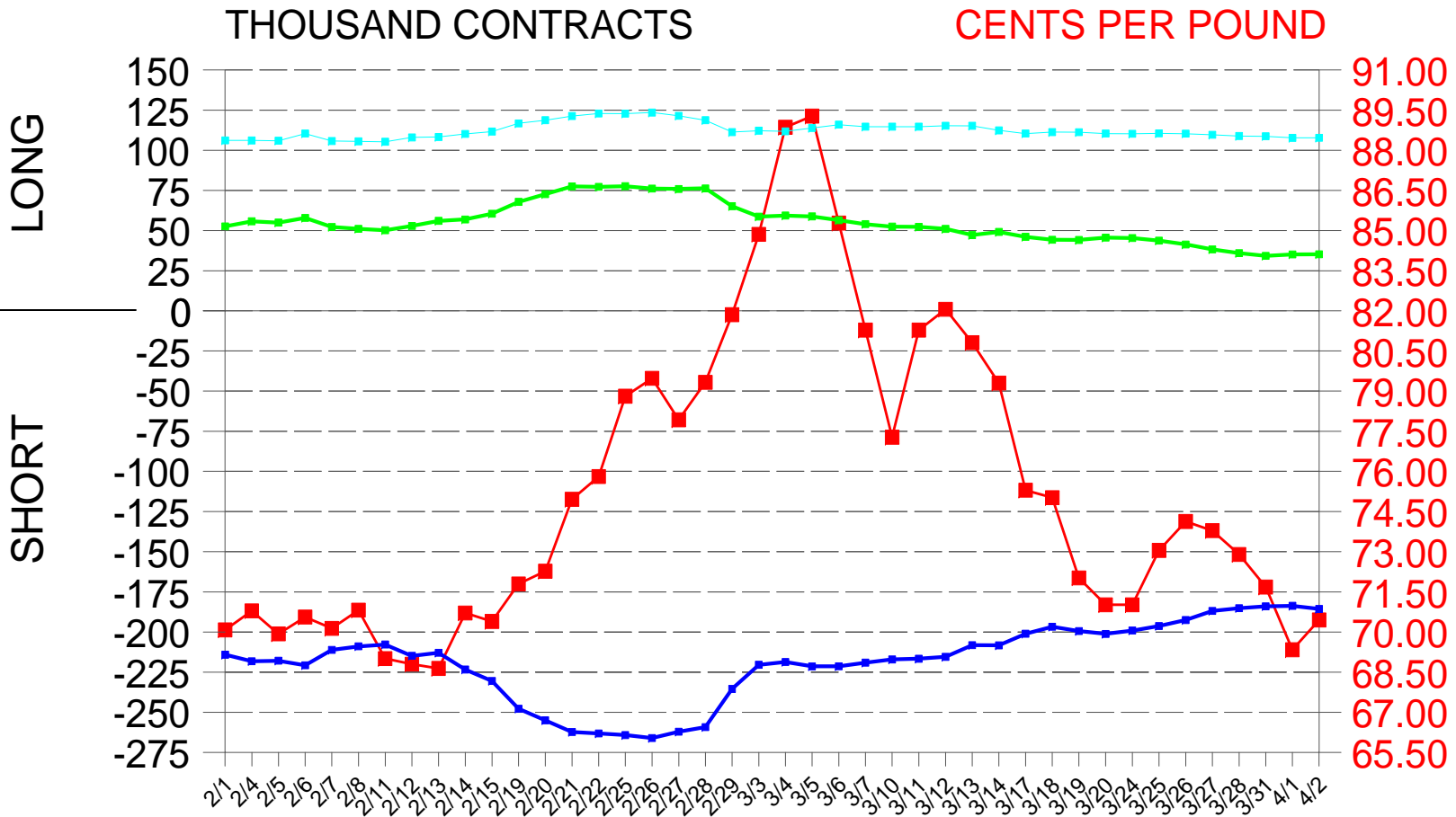
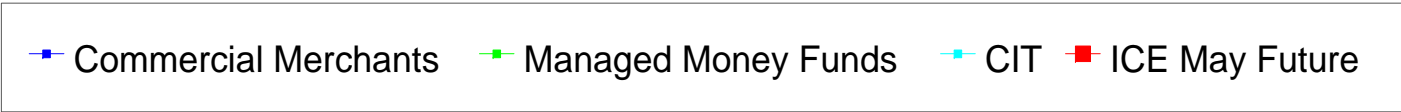


COMMERCIAL MERCHANTS = PHYSICAL HANDLER OF COTTON
 MANAGED MONEY FUNDS = REGISTRATION CODE OF CTA, CPO, OR MANAGED MONEY
 CIT = COMMODITY INDEX TRADER. AFOC = ALL FUTURES AND OPTIONS COMBINED. OPTIONS AS FUTURES EQUIVALENT



ICE Cotton Market Composition February 2008 Through April 2, 2008

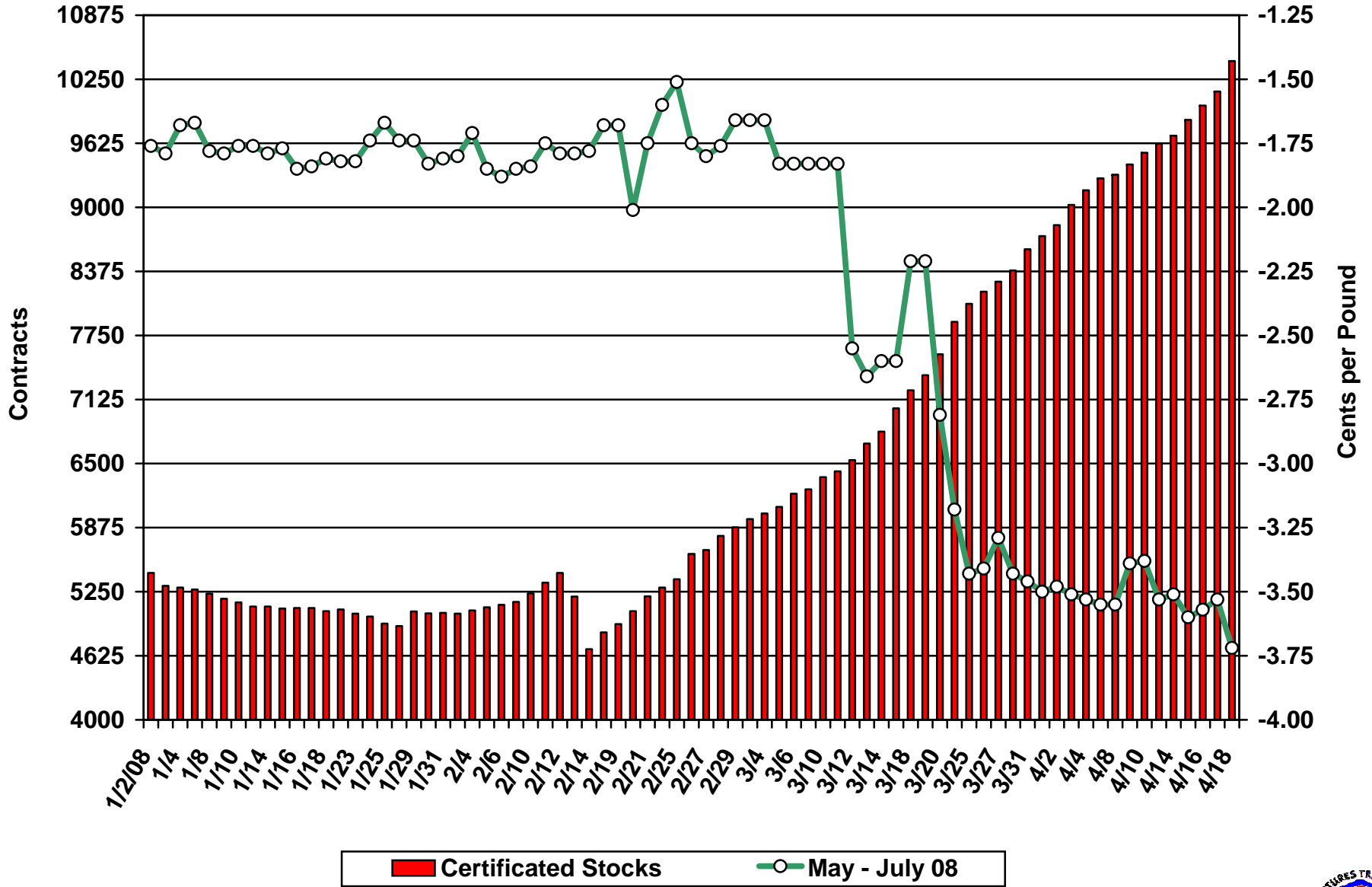
Reportable AFOC Net Daily Positions



COMMERCIAL MERCHANTS = PHYSICAL HANDLER OF COTTON
 MANAGED MONEY FUNDS = REGISTRATION CODE OF CTA, CPO, OR MANAGED MONEY
 CIT = COMMODITY INDEX TRADER. AFOC = ALL FUTURES AND OPTIONS COMBINED. OPTIONS AS FUTURES EQUIVALENT



ICE Futures Cotton: Certificated Stocks and Spread

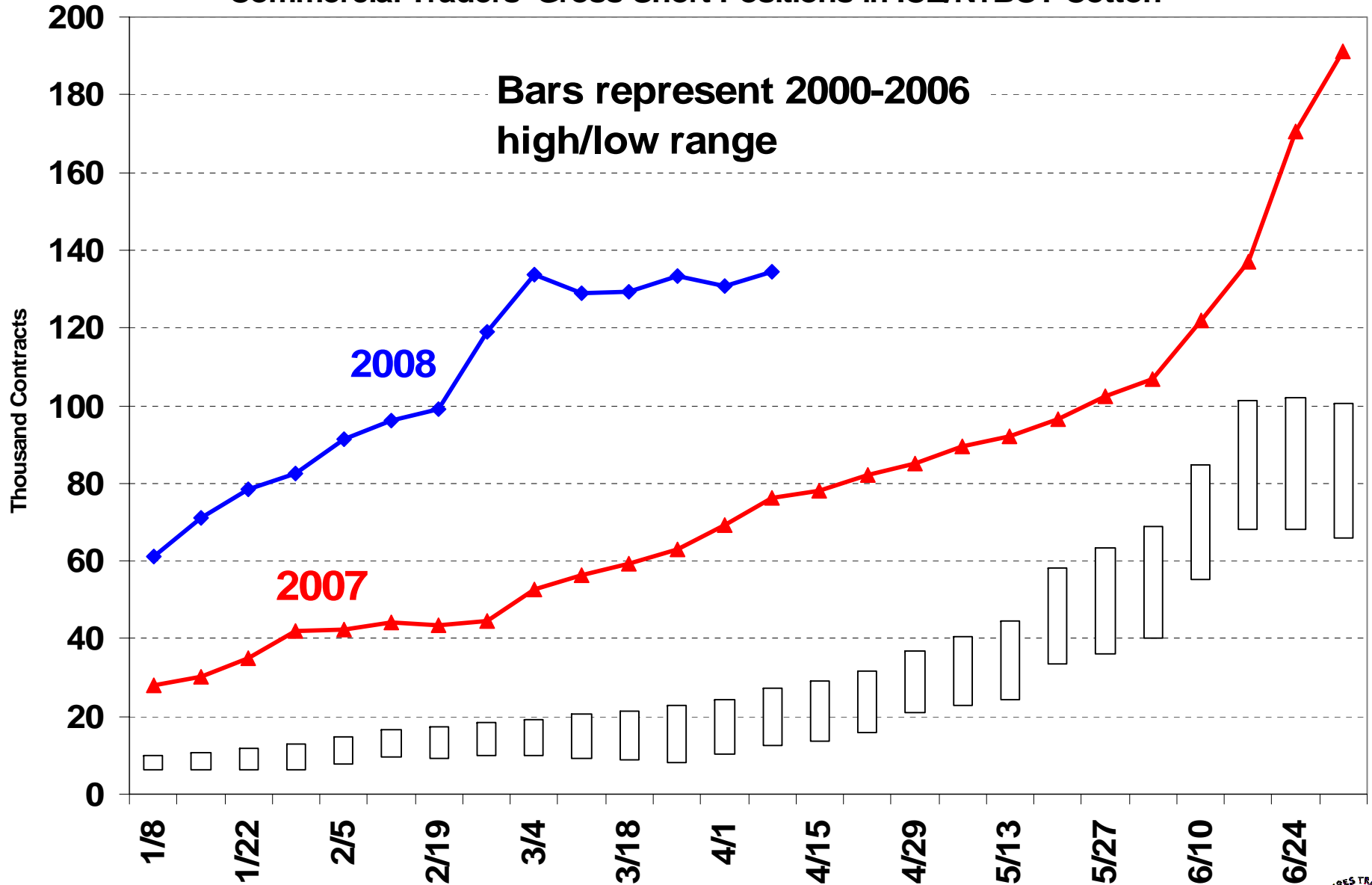


Source: ICE Futures US.



New-Crop* Cotton Hedging

Commercial Traders' Gross Short Positions in ICE/NYBOT Cotton



Source: CFTC COT data. * "New-Crop" is Oct future and all subsequent futures.

2008 Dates for Comparison



