

CNMI Coral Reef Initiative

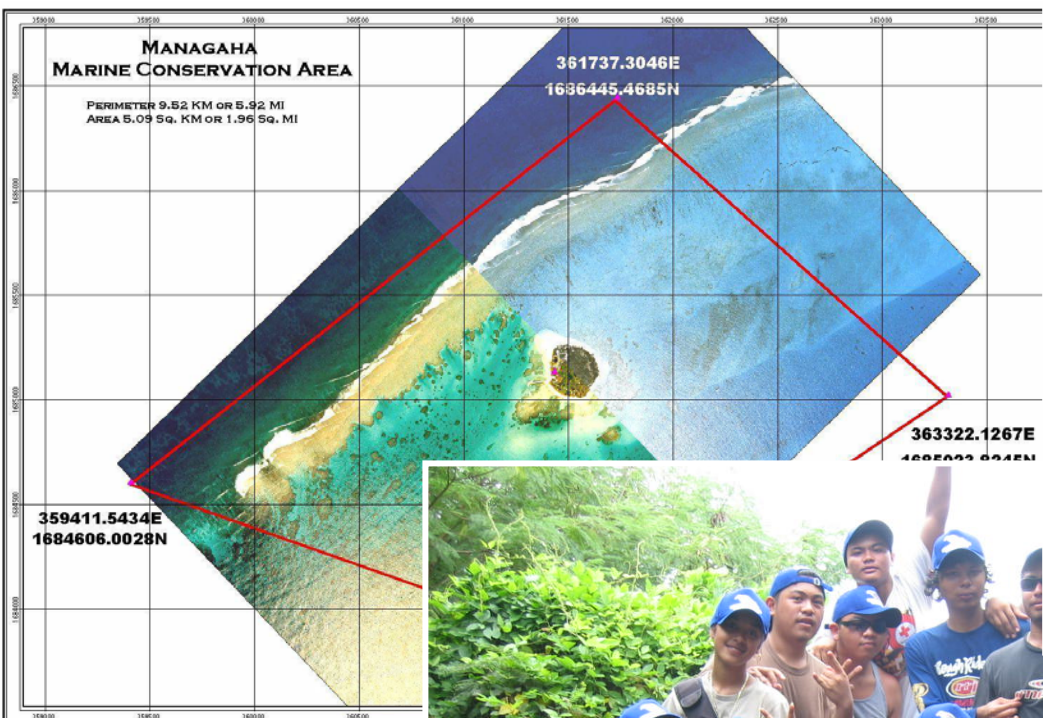


Accomplishments

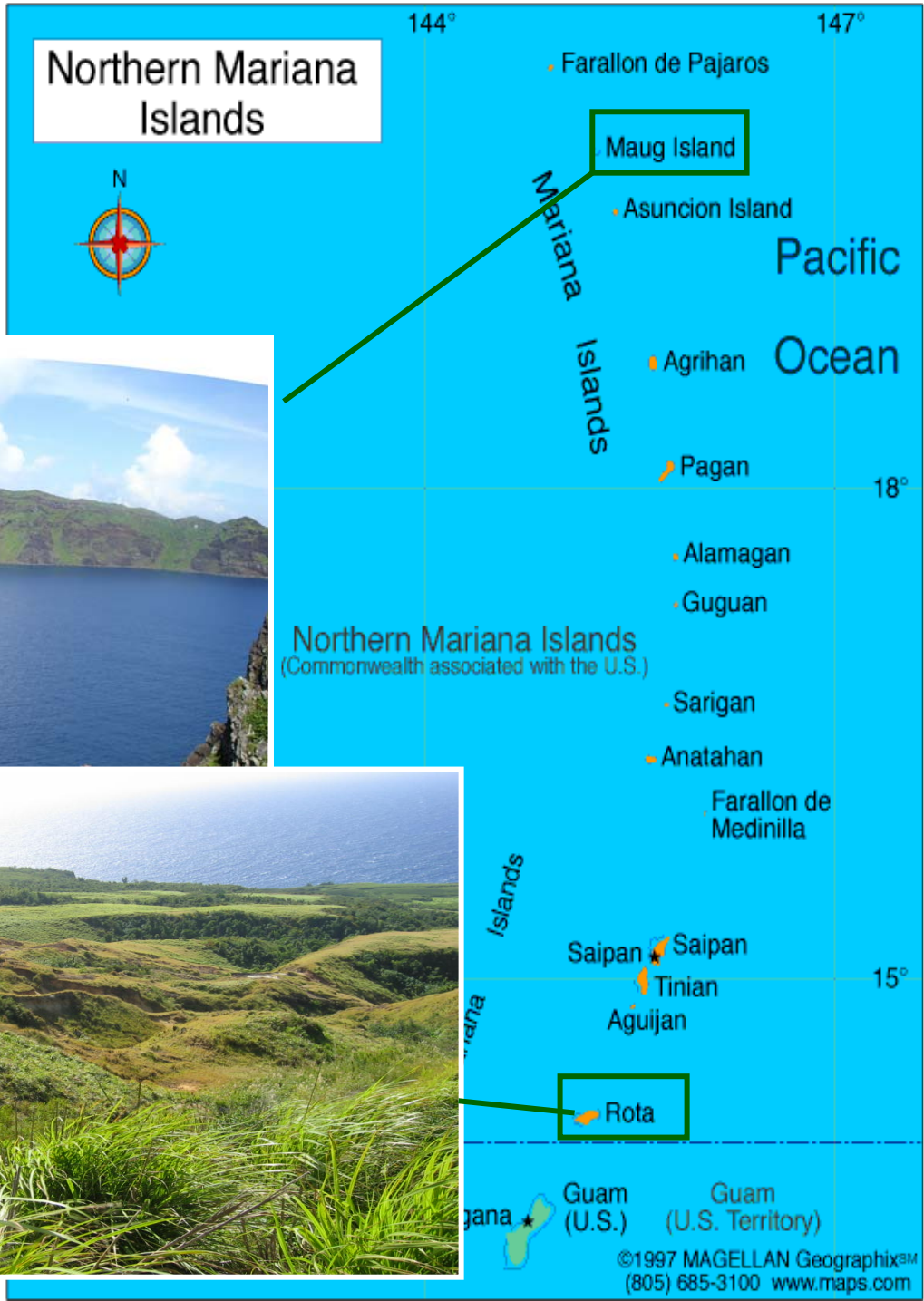
Partnerships

Challenges

Accomplishments



Projects across the CNMI, from Maug...



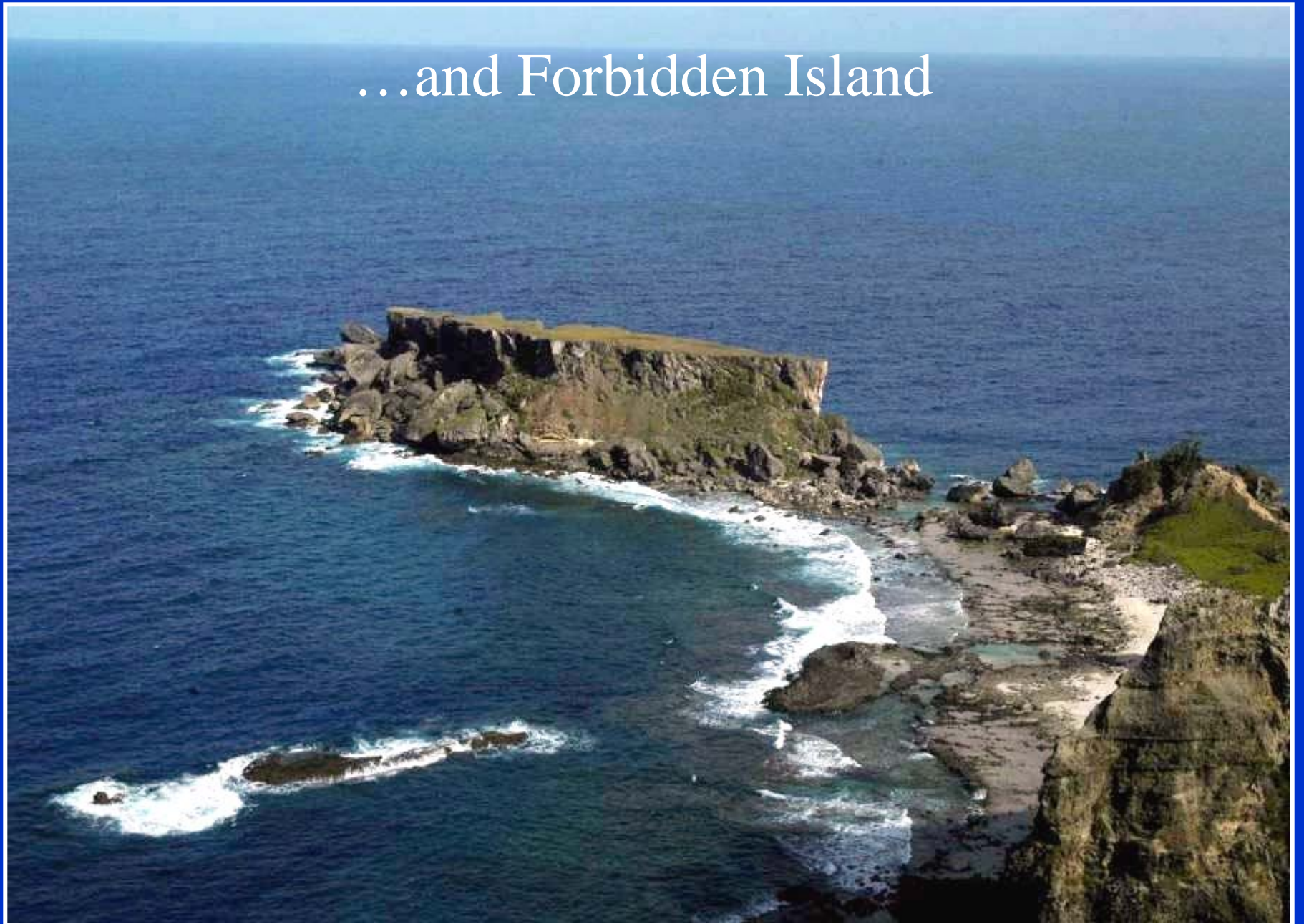
...down to Rota

Marine Protected Areas

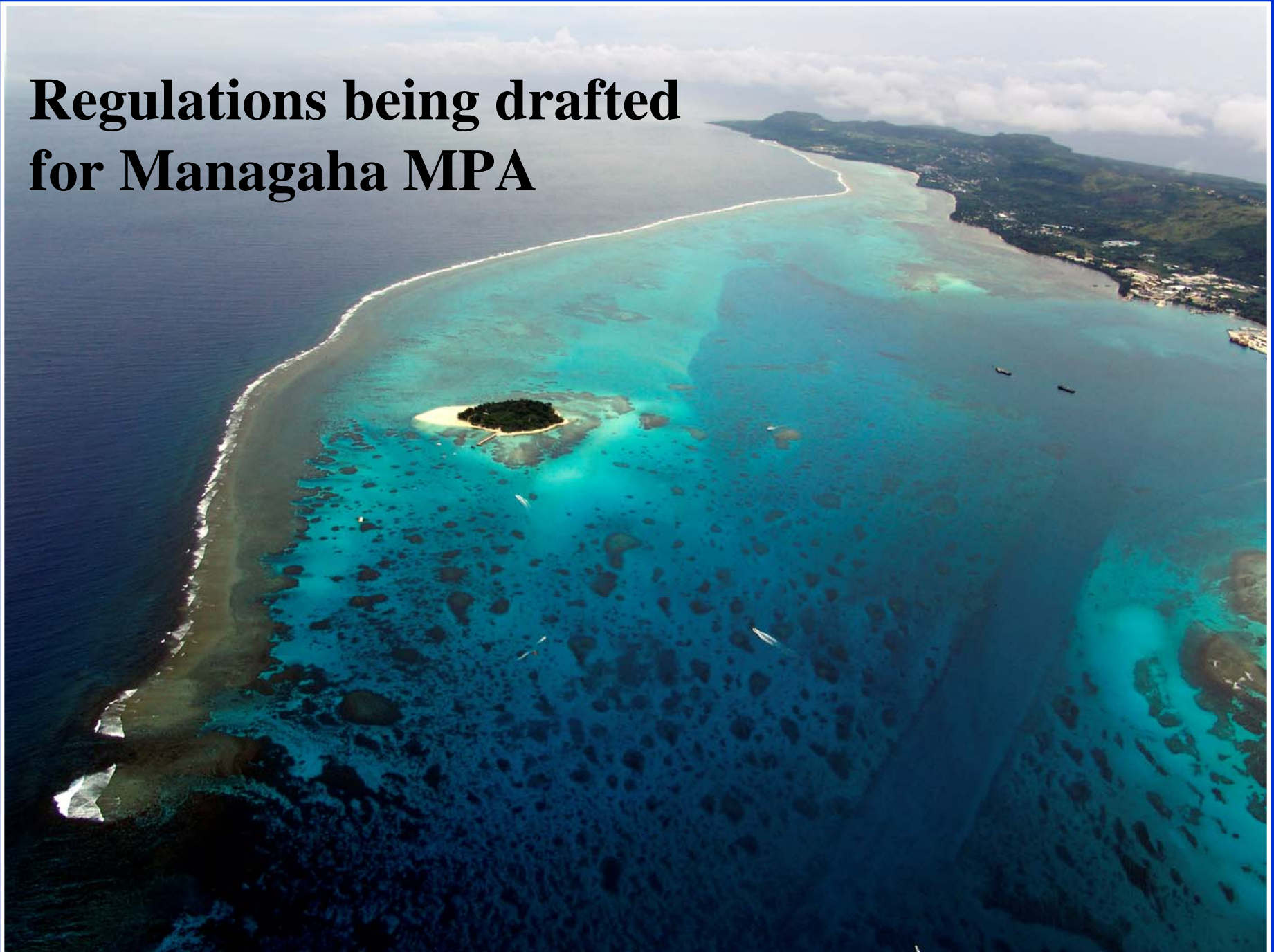


Management plans being drafted for Bird
Island...

...and Forbidden Island



Regulations being drafted for Managaha MPA



Sustainable Financing

Bill for user fee
for Managaha
drafted by
Legislature



Micronesia
Challenge
planning
meeting



Capacity Building

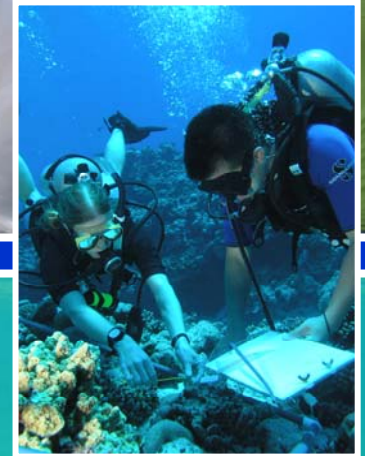


MPA Coordinator



Coral Management Fellows

Summer Internship Program





R.E.A.L.

Rota Environmental Action Leadership Group

- MPA delineation, signage and outreach
- Reef flat monitoring
- Planting in Talakhaya

GOVERNMENT PAYS FOR CORAL REEF
 SASANHAYA BAY FISH RESERVE
Marine Protected Areas can make a difference

More Fish
Bigger Fish
 More and healthier eggs from big females
 An egg bank which supplies fished areas
Fish swim out of reserve
 Coral Reefs Protected

Benefits for Tourism and Fishing
 Please help enforce our reserve so it can
 be enjoyed today and tomorrow.



Call for more information
 DEQ 532-3102, DFW 532-9494, CRMO 532-0464







Outreach at the 2006 Rota Fiesta





CNMI Fishing Regulations

Fishing Regulations Brochure

Bird Island Sanctuary

A Fully Protected No-take Area

Sanctuary Rules:

- No Taking
- No Fishing
- No Collecting
- No Walking On Reef

CNMI's Marine Protected Areas
Protecting our reefs and fish so they can be enjoyed today and tomorrow.
Call 323-6004 to report violations.

Majagaha Marine Conservation Area

A Fully Protected No-take Area

Sanctuary Rules:

- No Taking
- No Fishing
- No Feeding Fish
- No Collecting

CNMI's Marine Protected Areas
Protecting our reefs and fish so they can be enjoyed today and tomorrow.
Call 323-6004 to report violations.

Allowable fishing methods - How you may fish

- Hand net or talaya
- Hand reel
- Rod and reel
- Spear fishing
- Gleaning (harvest by hand)
- Trolling
- Bottom fishing
- Cliff fishing



Classroom education

- Developed middle school environmental curriculum
- Soliciting for K-12 coral reef curriculum
- Environmental presentations to ALL of Saipan's 4th grade students

CNMI's Coral Reefs

Dive Snorkel Protect



CNMI Coral Reefs:
Dive, Snorkel, Protect

Coastal Resources Management Office
P.O. Box 10007 Saipan, MP 96950
Tel: 670-664-8300/1 Fax: 670-664-8315
www.crm.gov.mp



Dive/
Snorkel
DVD
created for
Visitor's
Channel

INC

7

6

5

4

3

2

1

20

Talakhaya Revegetation Project

HELP LUTA SAVE OUR SOIL, SAVE OUR REEF



For information and to volunteer please call DLNR: 532-9494 CRMO: 532-0464 DEQ: 532-3102

MC 1 2 3 4 5 6 7 8 9 10 11 12 13 14 15 16 17 18 19 20

PROTECT OUR SOIL
PROTECT OUR REEF

PROTEHI TANO
Talakhaya Revegetation Project

A collaborative venture



PROTECT OUR REEFS!
MARINE PROTECTED AREAS
ARE SPECIAL PLACES.

Dive, Snorkel, Protect, CNMI!



Stay off the bottom.



Look but don't touch.



Don't litter.

PROTECT OUR REEFS!



LEAVE FOOTPRINTS, NOT TRASH.

PLASTIC AND OTHER GARBAGE KILL TURTLES AND SMOTHERS CORALS,
SO BE SURE TO PUT TRASH IN A GARBAGE CAN.



Partnerships for Conservation

Laulau Bay Project

Project Partners:

Coastal Resources Management Office

Division of Environmental Quality

DLNR Division of Forestry

DLNR Division of Fish & Wildlife

Department of Public Lands

Area Landowners

Marianas RC&D

Beautify CNMI!

MOVER Overseas Filipino Workers

Public Schools

Boy Scouts

Community Volunteers

U.S. EPA

NOAA

USDA-NRCS



Nursery Expansion



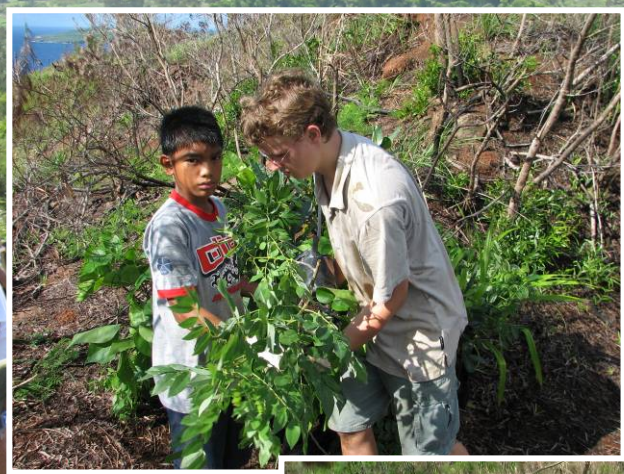
Tree Propagation



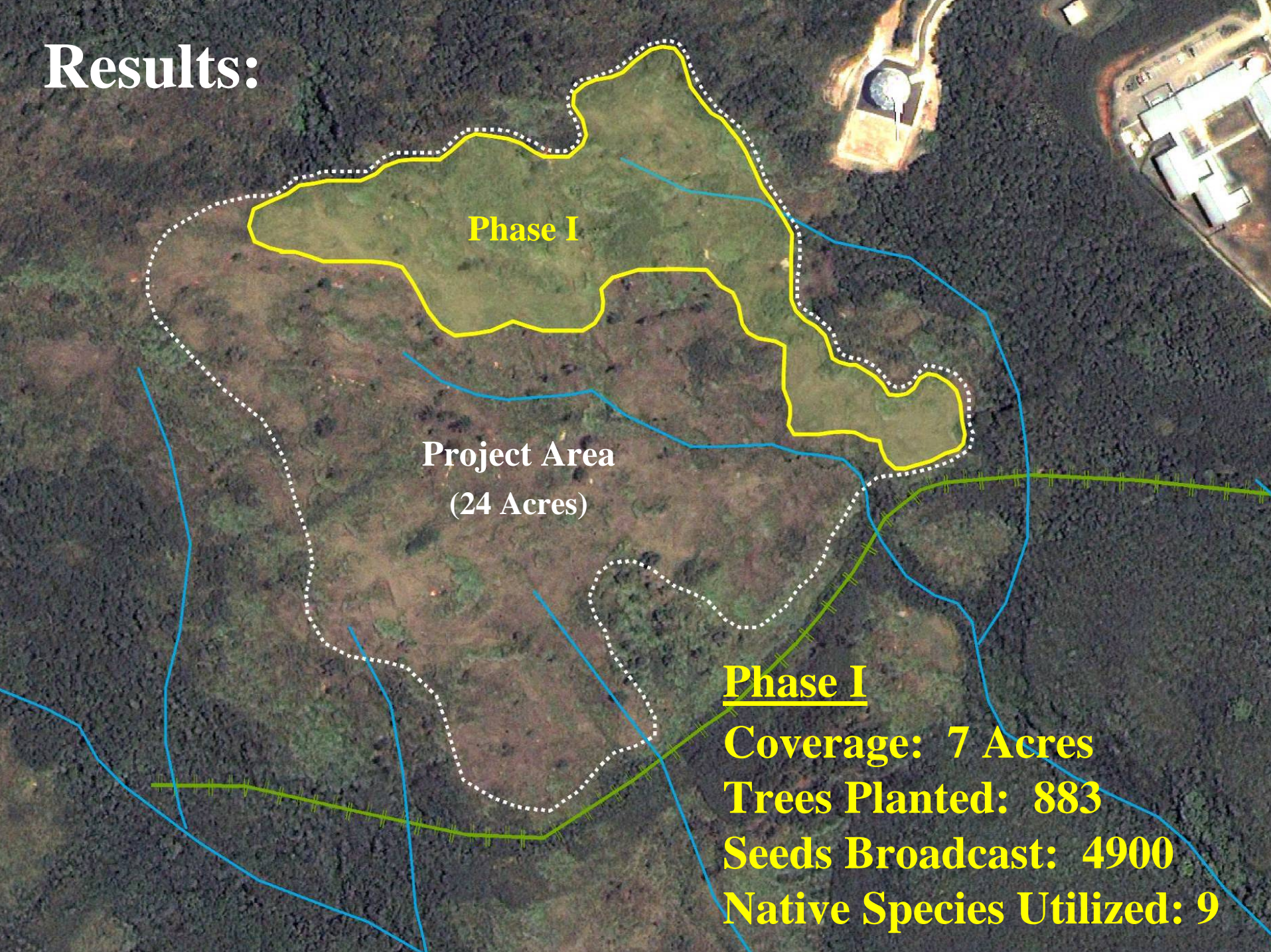
Volunteer Training



Mobilization



Results:



Phase I

**Project Area
(24 Acres)**

Phase I

Coverage: 7 Acres

Trees Planted: 883

Seeds Broadcast: 4900

Native Species Utilized: 9

Talakhaya Revegetation Project

**HELP LUTA
SAVE OUR SOIL,
SAVE OUR REEF
PROTEHI I TANO YAN I TASI**

A collaborative venture by:



For information and to volunteer please call DLNR: 532-9494 CRMO:532-0464 DEQ: 532-3102



Coming Soon...Luta Livelihoods Initiative



Fisheries and Enforcement

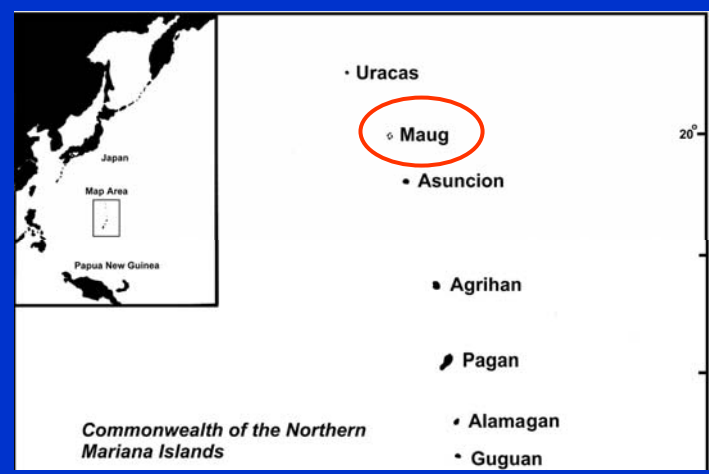


First year of
inshore creel
survey
successfully
completed!

Strong partnership with
NOAA and WestPac FIN



Joint Enforcement Action with US Coast Guard against foreign fishing vessel found near Maug



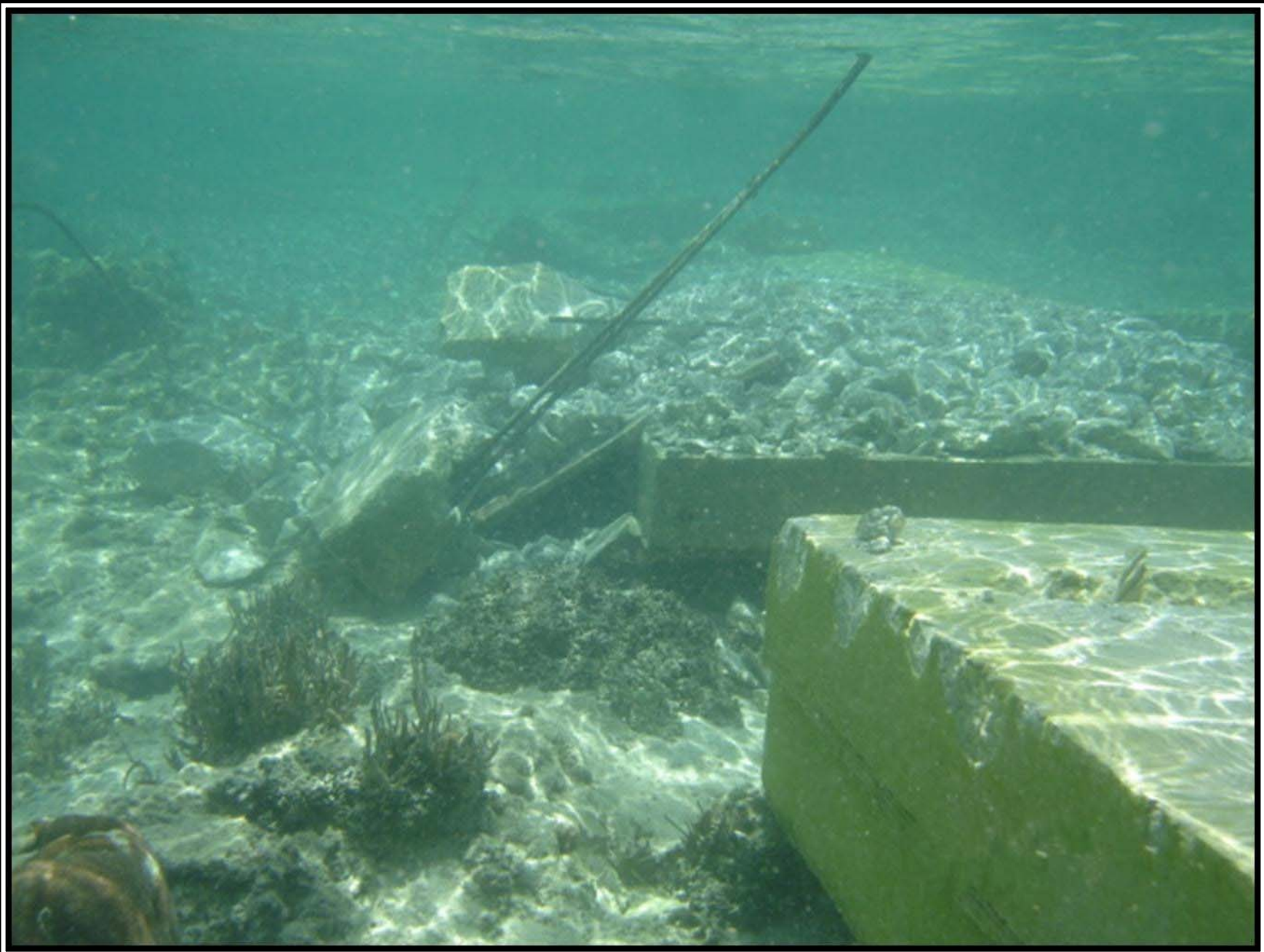
Challenges

The following project in Rota was permitted by one of our federal partners...









Tracks of the heavy equipment tractor on the raised reef.

Fore Reef.





Preposition Ships

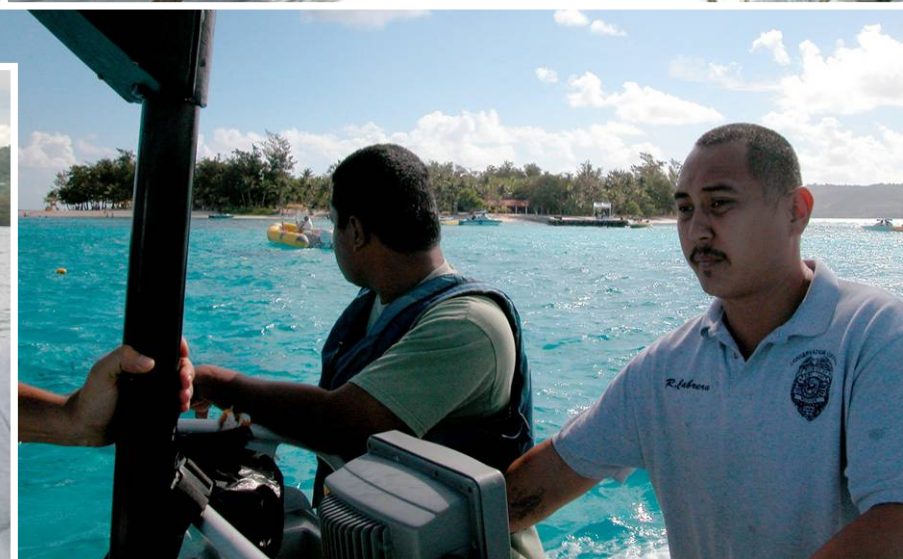
- Request to work with Department of Navy to help minimize impacts to coral reefs from these ships



Support needed in
developing and
implementing a
sustainable
financing strategy
for the Micronesia
Challenge



Enforcement Capacity



Summary

- Accomplishments in many key areas
- Productive partnerships formed
- Assistance needed with:
 - **Permitted projects**
 - **Sustainable Financing**
 - **Enforcement Capacity**

Si Yu'us Ma'ase!

Olomwaay!

Thank You!

