

# Government of the United States Virgin Islands

Department of Planning & Natural Resources

Division of Coastal Zone Management



**John P. deJongh, Jr.**  
**Governor**

USCRTF Meeting, February 27, 2008



# **St. Croix East End Marine Park**

## **St. Croix, United States Virgin Islands**

**1978** 18 APCs designated with establishment of Virgin Islands CZM Program.

**2000** National Action Plan to conserve Coral Reefs Prepared.

**2001** USVI Marine Park Advisory Committee established. TNC, OC, UVI, USGS, NPS, DPNR, Community Stakeholders.

**2003** St. Croix East End Marine Park established (Act 6572). The Park's boundary encompasses 4 APCs.

<http://www.nature.org/wherewework/caribbean/easterncaribbean/wherewework/art8687.html>

The Nature Conservancy wrote...

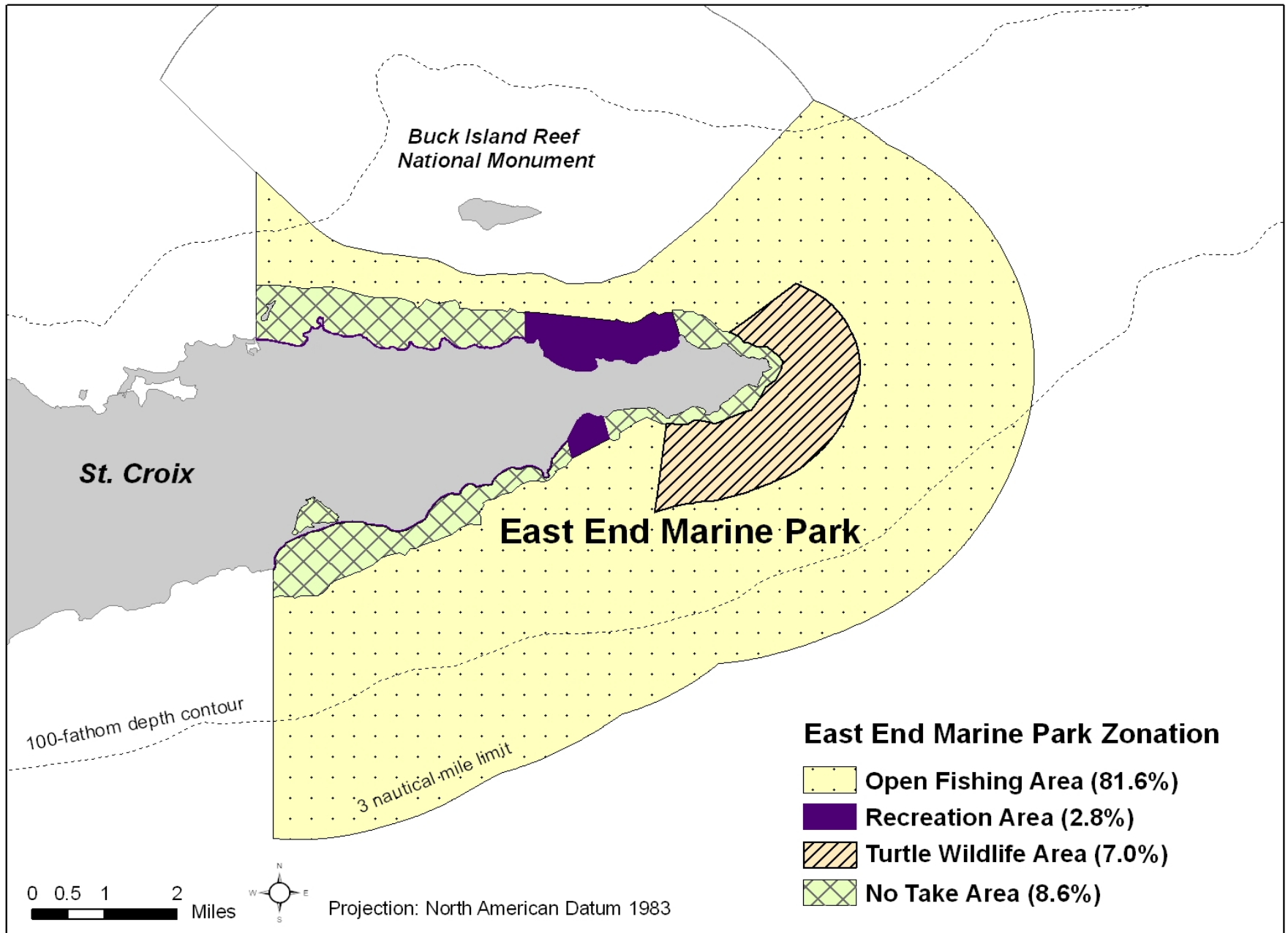
East End Marine Park, the first territorial park in the U.S. Virgin Islands, ***will protect the largest island barrier reef system in the Caribbean.***

Legislative approval recently made the area an official park. Extending from the high-water mark out three miles (4.8 kilometers), **it encompasses 60 square miles** (155.4 square kilometers) of offshore coral reef and other marine habitat. The park includes about five square miles (13 square kilometers) of "no-take areas," which are off limits to any fishing and harvesting. A turtle refuge will extend about a mile (1.6 kilometers) into the Caribbean Ocean from the shoreline of the island's primary hawksbill and green turtle nesting beaches on Jack Bay, Isaac Bay and East End Bay.

#### **Location**

The appropriately-named park encompasses the last six miles (10 kilometers) of the eastern end of St. Croix. It includes about **12 miles (20 kilometers) of coastline....**





# St. Croix East End Marine Park



*It is our mission  
to protect this  
diversity, and beauty,  
for generations to  
come.*



# St. Croix East End Marine Park

## *Territorial Coral Reef Monitoring Program*

**8th year of collaborative effort  
between CZM, DFW and UVI.**

**Long-term dataset, using  
USGS/NPS video methodology.**

**NOAA Biogeo protocol  
collaborations.**

**Collaborations with NPS, UVI and  
TNC for lobster and *Acropora*  
monitoring.**



# 2007

**St. Croix East End  
Marine Park Office  
established to  
Coordinate all  
activities of the  
EEMP and  
USVI Coral Reef  
Initiatives.**

**Park Coordinator  
Marine Resource Ecologist  
Interpretive Ranger  
Ad. Assistant  
NOAA Coral Fellow**

**Rules and  
Regulations  
Promulgated**



# St. Croix East End Marine Park

## *Education and Outreach Program*

### **East End Marine Park Launches Tours Above and Below the Sea**

*by Lynda Lohr* January 8, 2008

### **Tour Group Gets Insider's View of East End Marine Park**

*by Carol Buchanan* January 8, 2008

### **Tour Offers Lessons in History, Biology and Geology at East End Marine Park**

*by Bill Kossler* January 16, 2008





# St. Croix East End Marine Park

## *Education and Outreach Program*

### **School Tours**

376 Students

### **Public Tours**

181 Citizens

### **Snorkel Clinics**

23 Citizens





Jan. 8, 2008 -- **Growing up**, Park Ranger John Farchette played and fished in the area of St. Croix's East End Marine Park, so he knows it well and feels passionate about the local ecosystem.

"My dad fished here every other day," he said. "I learned things from him, like using brown pelicans as indicators of where to get bait."

**Farchette interpreted the unique environment of Great Pond Bay for 12 residents during a short hike Tuesday.**

# St. Croix East End Marine Park

## *Education and Outreach Program*



**Blending science and local voices with vibrant images of culture, music, children, marine life & fishermen, this film informs and inspires St. Croix residents and Virgin Islanders to support a new marine protected area established in their Caribbean waters.**



**St. Croix East End Marine Park - A popular St. Croix band introduces viewers to their undersea world.**

# St. Croix East End Marine Park

## *Local Action Strategies (LAS)*

**Lack of Awareness**

**Fishing**

**Recreational Use**

**Land Based Sources  
of Pollution**



# St. Croix East End Marine Park

## *Local Action Strategies (LAS)*

**The development and implementation of LAS, with commitment from both local and federal partners, remains key to our future resource management efforts.**



# St. Croix East End Marine Park

**Strengthened Partnerships**

**Continued Community  
Awareness**

**Continued Monitoring**

**Rules & Regs Awareness**

**Revenue Generating  
Initiatives**

**Navigational Markers /  
Signage**

**Socio-economic Initiatives**



*The U.S. Virgin Islands Government acknowledges the significance of the opportunities provided by the USCRTF. We are extremely pleased with the exemplary partnerships that we have developed with NOAA and DOI, and look forward to building similar partnerships with all members of the Task Force.*





**Thank You... USCRTE!**

*[www.stxeastendmarinepark.org](http://www.stxeastendmarinepark.org)*