

# West Roxbury Proposed Pipeline/M&R Station

Mark McDonald  
NatGas Consulting

Potential M&R  
Station Location (TDB)

MP 4.0

MP 4.9

# **SAFETY**

- **High Pressure Regulator Station**
- **Densely Populated “High Consequence Area”**
- **Transmission Gas Un-Odorized (no odor)**
- **Blasting Impacts on Pipe & Support Bed**
- **3<sup>rd</sup> Party Damage \* 811 \* Dig Safe**

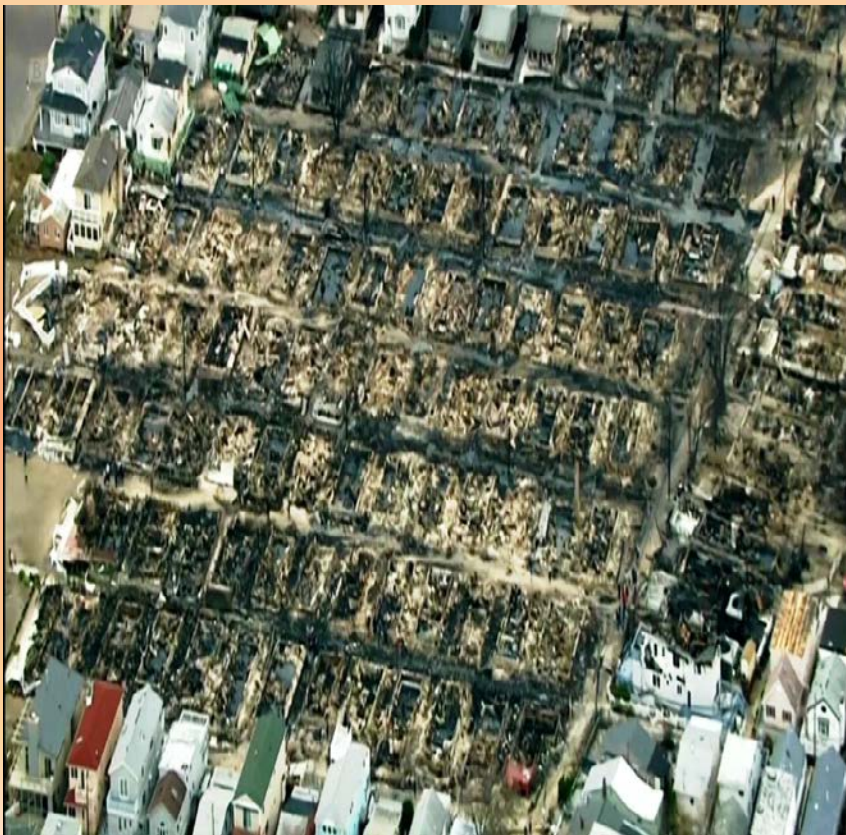
# **ENCROACHMENT-ROW**

- **Private Property Encroachment**
- **Land Abutters Restricted Property Use**
- **Eminent Domain**
- **Land & Water Environmental Contamination**
- **Nuisance: Privacy- Noise- Odor- Construction**



# High Pressure Regulator Failure

## Weather - Mechanical



## Act of Terror

Command Master Chief SEAL {Retired),  
Naval Special Warfare Development Group  
June 4<sup>th</sup>, 2014

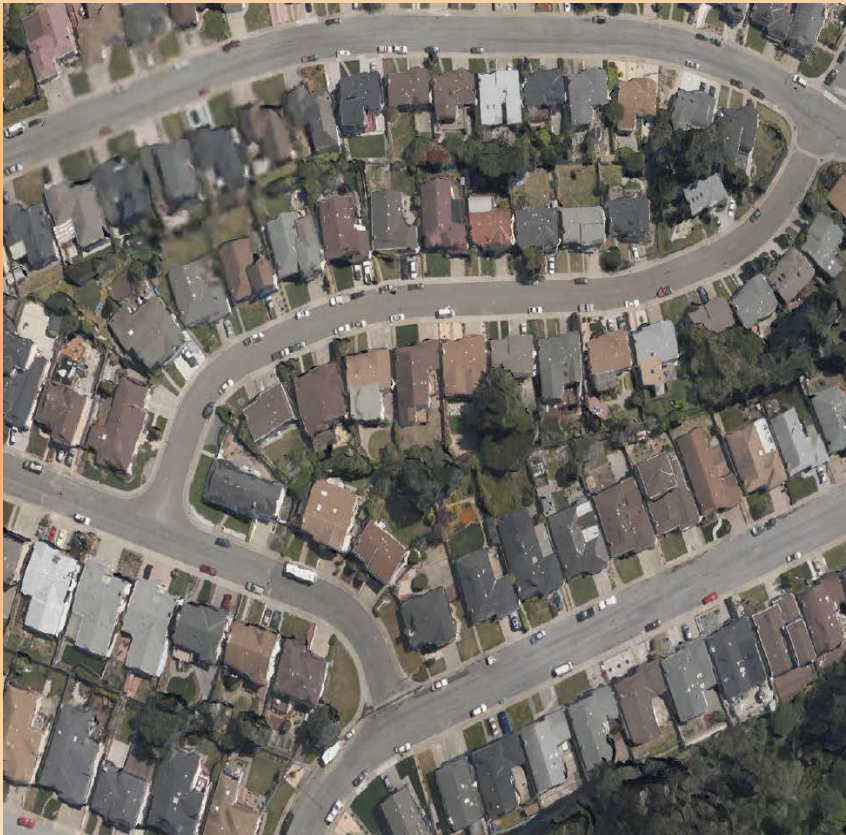
- *“terrorists will seek out newer, softer targets, perhaps such as our national energy infrastructure”.*

Justice Dept.  
Deputy Atty. Gen. James Comey  
June 2<sup>nd</sup>, 2004

- *“Al Qaeda leaders had assigned Padilla and an accomplice to blow up as many as three high-rise apartment buildings by detonating natural gas explosions in two apartments rented in each building”.*

# Populated “High Consequence Area”

San Bruno Before



After!







**BREAKING NEWS**

# Reports: Plane Crash

SAN DIEGO

6:38



[www.cbs5.com](http://www.cbs5.com)

# “High Consequence Area”

Gas HCA Online

About

Contact

Bookmarks

Legend

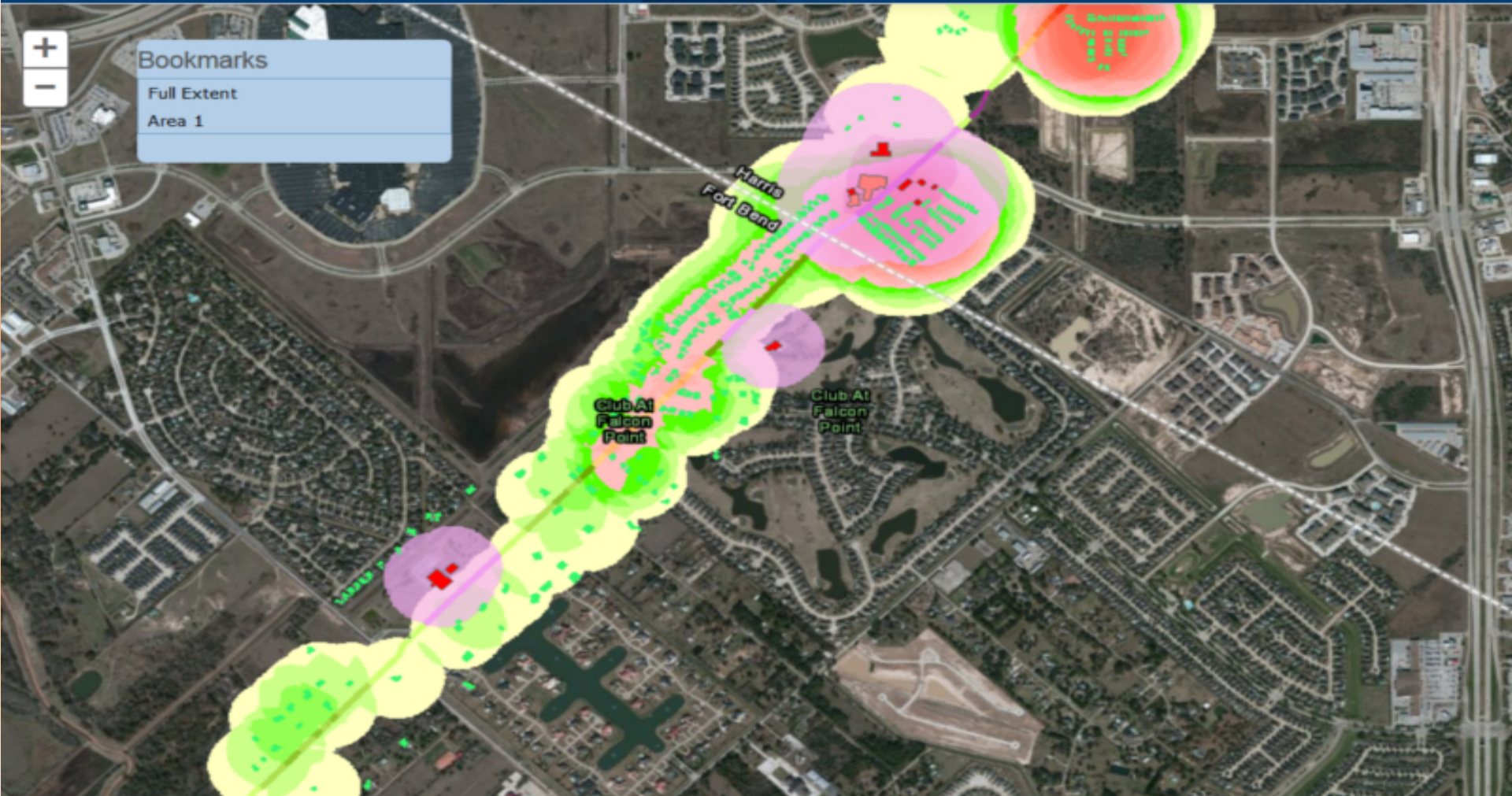
Logout



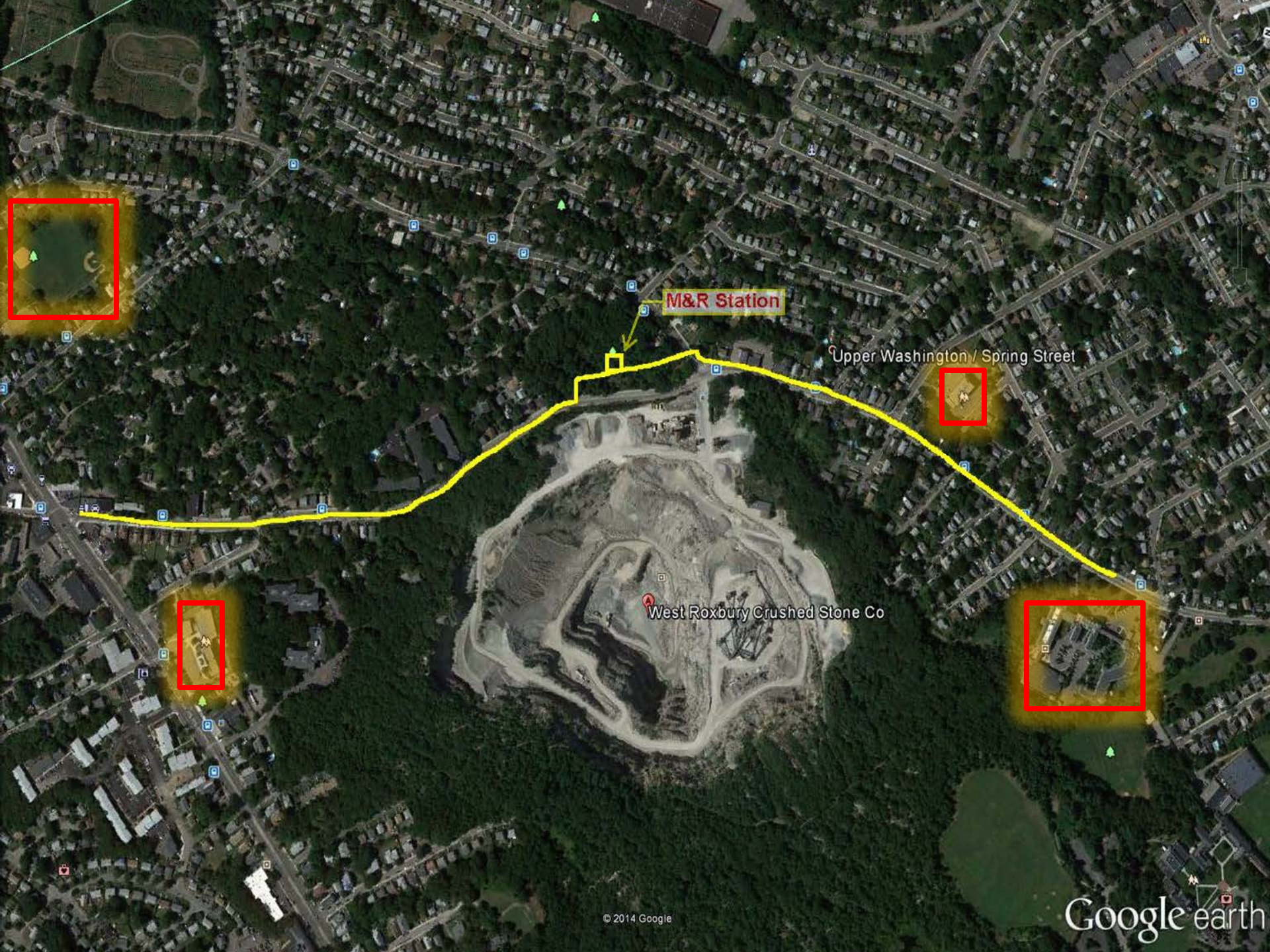
Bookmarks

Full Extent

Area 1







M&R Station

Upper Washington / Spring Street

West Roxbury Crushed Stone Co



# Un-Odorized Gas “No Gas Odor”

- Natural Gas is naturally odorless
- An odorant called Mercaptan is added which gives the “rotten egg” smell we recognize
- Transmission Pipelines do not add odorant!  
**WHICH MEANS**
- Gas leaks on this Transmission pipeline would go undetected by humans in the air, as well as inside your home by your families!

# Blasting

## Pipeline Risks

### **Columbia Gas Transmission**

#### **Blasting plans must be approved**

Any blasting proposed within 300 feet of CPG's facilities must be submitted to CPG in advance, along with a blasting plan outlining such proposed activity. No blasting may begin unless and until CPG provides written confirmation that it does not object to such blasting. Any modifications to the blasting plan must also be submitted to CPG for review and should not be implemented unless and until CPG provides written confirmation that it does not object to such modifications. The blasting contractor may be required to monitor and record seismic shock at the facilities.



Does daily blasting within **one mile of your pipeline over several years create a safety issue?** Distance from a pipeline, soil type, blast intensity, and blast frequency all must be considered to determine if the blasting will create a safety concern for a pipeline. If you know of any planned blasting or any blasting has occurred in the vicinity of one of our pipelines, please contact Spectra Energy toll free at 888-293-7867 so we may conduct the technical evaluation of the blasting's impact on the pipeline.

## Soil/Rock Bed Disturbances





# 3<sup>rd</sup> Party Damage – Dig Safe

Limited Markers



Result?



# Private Property Encroachment



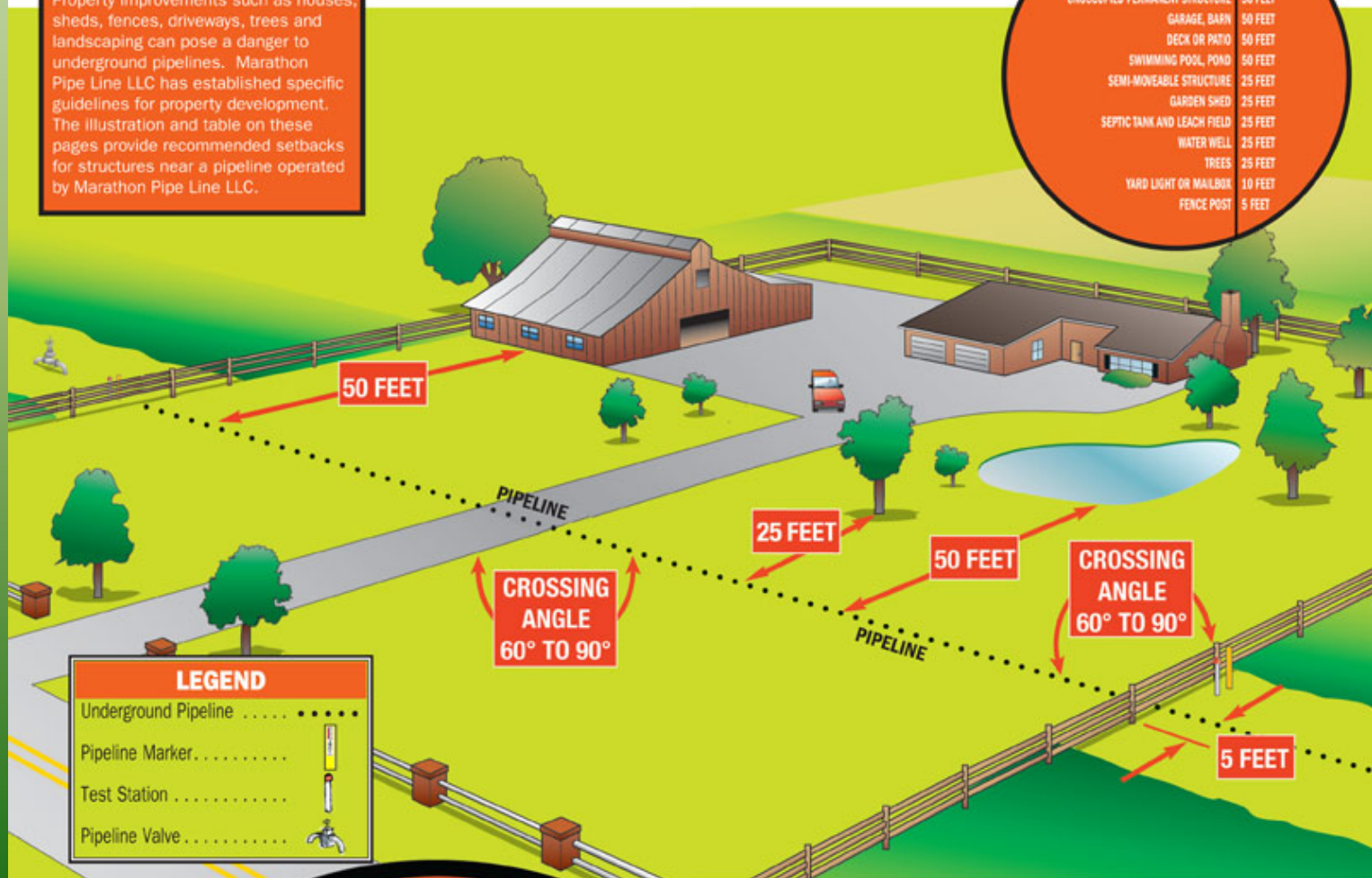


# Abutters - Restricted Property Use

## Recommended Setbacks Near Pipelines

Property improvements such as houses, sheds, fences, driveways, trees and landscaping can pose a danger to underground pipelines. Marathon Pipe Line LLC has established specific guidelines for property development. The illustration and table on these pages provide recommended setbacks for structures near a pipeline operated by Marathon Pipe Line LLC.

NEW HOUSE, BUSINESS, PLACE OF PUBLIC ASSEMBLY	50 FEET
ADDITION TO AN EXISTING DWELLING, ETC.	50 FEET
UNOCCUPIED PERMANENT STRUCTURE	50 FEET
GARAGE, BARN	50 FEET
DECK OR PATIO	50 FEET
SWIMMING POOL, POND	50 FEET
SEMI-MOVEABLE STRUCTURE	25 FEET
GARDEN SHED	25 FEET
SEPTIC TANK AND LEACH FIELD	25 FEET
WATER WELL	25 FEET
TREES	25 FEET
YARD LIGHT OR MAILBOX	10 FEET
FENCE POST	5 FEET



# Eminent Domain

## Green Mountain Power threatens eminent domain for transmission lines

(“VEC”) have been in contact with you, in writing and/or through phone conversations, explaining ***the need to acquire additional rights on an existing VEC easement across your property***. As of the date of this letter, we have been unable to secure the necessary updated easement across your property.

We would very much prefer to work this out with you informally ***rather than going through the condemnation process***.



# Environmental Contamination

The inspector should evaluate the following likely **PCB** locations (sources of PCB contamination) for evidence of potential violations of PCB regulations:

## ! PCB Sources

- Natural Gas Turbine Compressors
- Air Compressors
- Condensate Drip Points - Condensate Scrubbers (oil scrubbers may have PCBs)
- Pig Launchers and Receivers.
- Wastewater/Oils Treatment System

## ! PCB Storage

- Condensate Storage Tanks
- Condensate and Oil Scrubber Storage Tanks
- Waste Oil Storage Tanks
- Wastewater Storage Tanks

## ! PCB Disposal

- Blowdown Vents (all types of compressors and equipment)
- Burn Pits
- Burn Barrels
- Surface Disposal (Soil, Drains, Floor)
- Condensate Disposal
- Condensate Scrubber Disposal
- Dehydration Material Disposal
- Wastewater and Storm Water Discharge Points.



# Environmental Contamination

Although TGC (Tennessee Gas) will not reveal all of the more than **600 chemicals** used in fracking, saying that it is proprietary information, air samples at compressor stations (placed every 40-60 miles along pipelines) include:

*benzene, dimethyldisulfide, ethyl-methylethyl disulfide, trimethyl benzene, diethyl benzene, tetramethyl benzene, carbon disulfide, nephthalenes, methyl pyridine, carbonyl sulfide, and toluene* among others

<http://www.nofrackedgasinmass.org/>



# Operating Nuisance

**PIPELINE NOISE:** “Will be lower than the Ldn (day/night equivalent) regulatory requirement of **55 decibels** at the nearest noise-sensitive areas (residences, schools, hospitals). For perspective, an **average conversation is 50 dBA**, a **hair dryer 70 dBA** and a **loud radio 80 dBA.**”

**ODORS:** Millions of cubic feet of gas purged on a regular basis expelling harmful contaminants and odors (*down stream of Regulator Station*) creating strong odor and multiple leak calls!

**Privacy:** Between construction and maintenance. Impact will be quite noticeable, and in my opinion, property values will suffer.

# Do “WE” Need This Pipeline?

- **Electric & Gas Companies were separated several years back. “Conflict of Interest”.**
- **Recently rules changed and once again Electric & Gas Companies Combined.**
- **Electric Generation Plants ran on coal & oil for years opposing natural gas conversions.**
- **Now...they are buying their fuel source from themselves! Increasing profits dramatically!**



# No Pipeline = Electric Price Rise?

## Gas Electric Power Prices

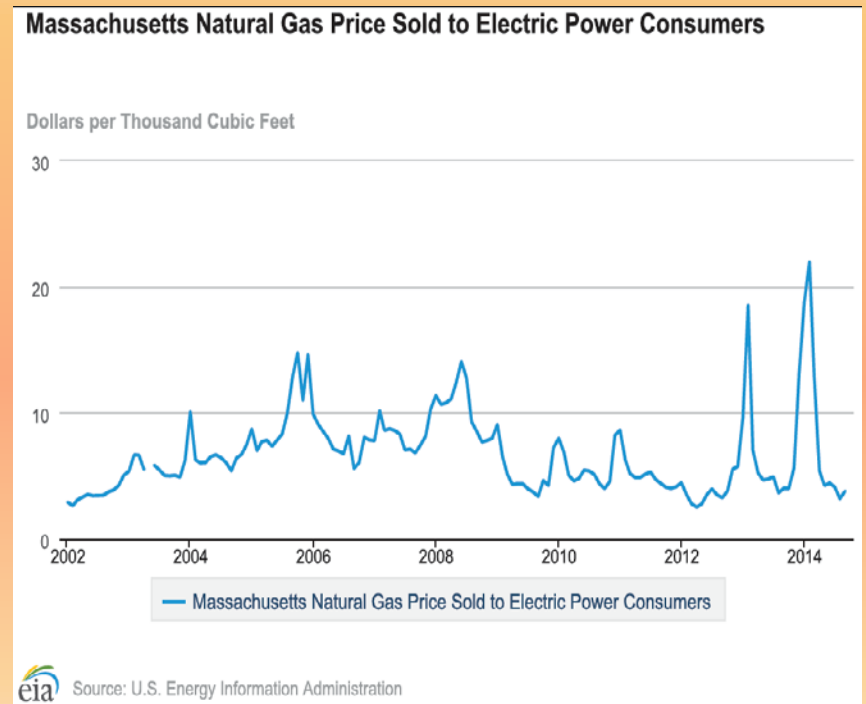
**“Electric rates in Mass. set to spike this winter”** (September 25, 2014)

Massachusetts consumers will pay significantly higher electric bills this winter as a ***persistent shortage of natural gas*** for generating plants drives power prices to record levels.

**“NStar seeks 29 percent hike in electric rates”** (November 07, 2014)

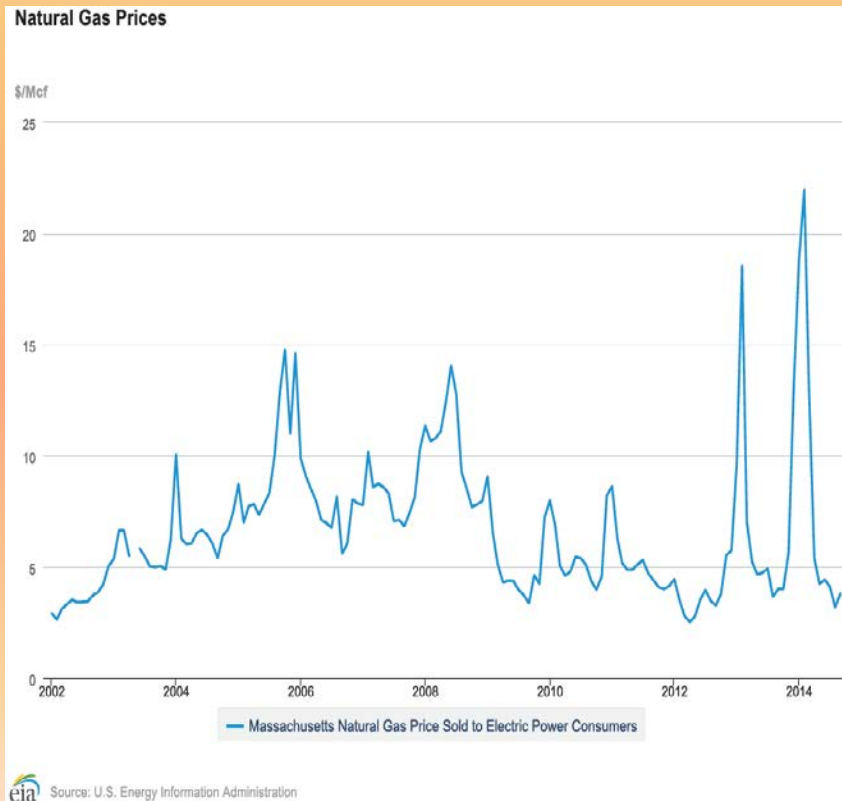
NStar blames the cost of supply, because of an ***overwhelmed pipeline network***, for the price hike.

## Winter Prices ALWAYS Rise!

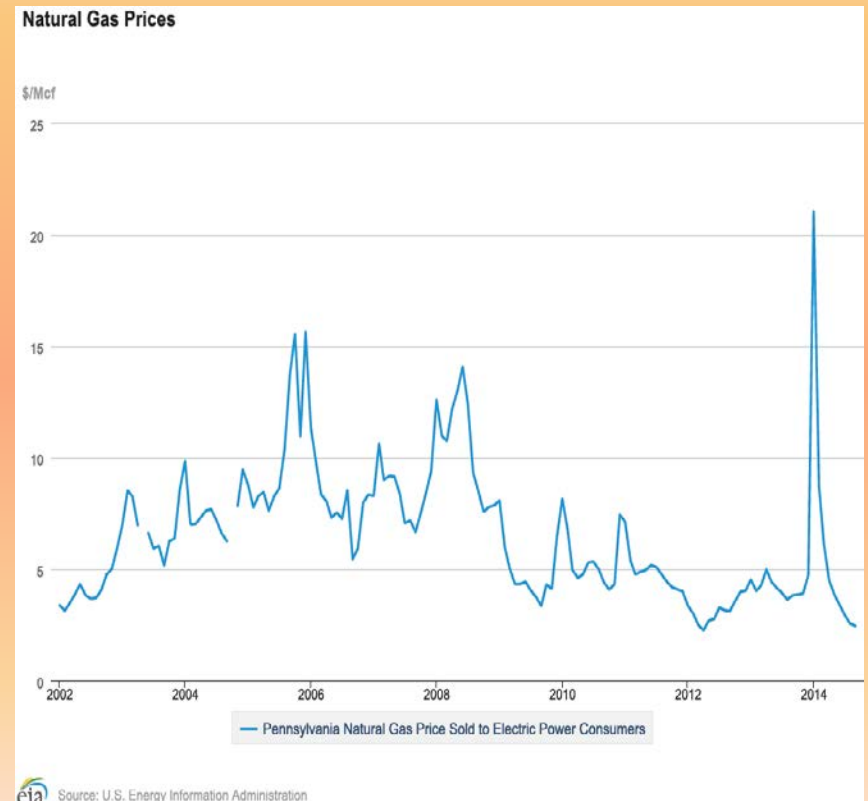


# Gas Price ↑ Due to Pipeline Needs?

## Massachusetts Gas Price



## Pennsylvania Gas Price



# 2014 Gas Electric Power Prices

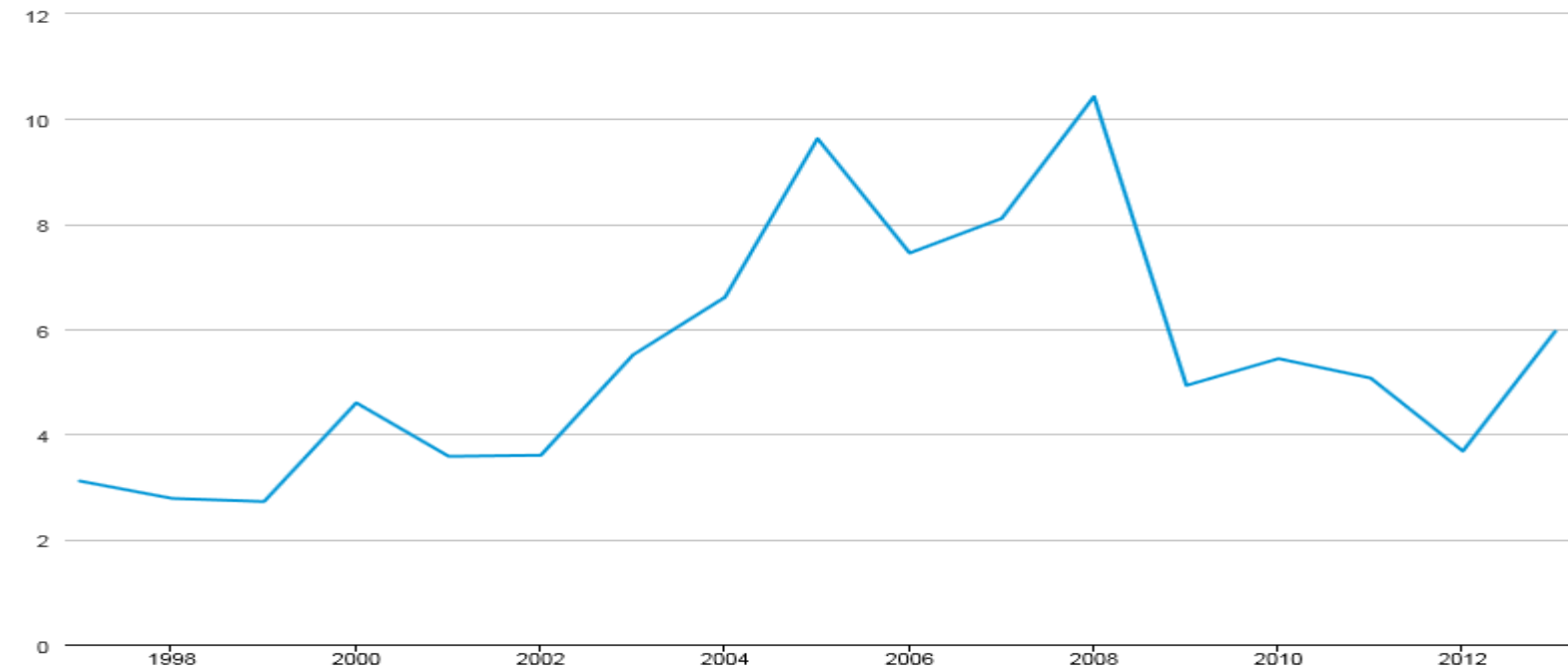
## Natural Gas Prices

(Dollars per Thousand Cubic Feet, except where noted)

		Apr-14	May-14	Jun-14	Jul-14	Aug-14	Sep-14
Electric Power Price	☐	5.25	5.08	4.98	4.57	4.25	4.33

### Natural Gas Prices

\$/Mcf



— Massachusetts Natural Gas Price Sold to Electric Power Consumers



Source: U.S. Energy Information Administration



# Tennessee Pipeline Supply



# Thank You 😊

**Mark McDonald**  
One Westinghouse Plaza  
Building A, Suite #36  
Boston, MA 02136

[mark.mcdonald@negwa.com](mailto:mark.mcdonald@negwa.com)

**Nat  Gas**  
C O N S U L T I N G

[www.411Experts.com](http://www.411Experts.com)

---