



Water Lens™

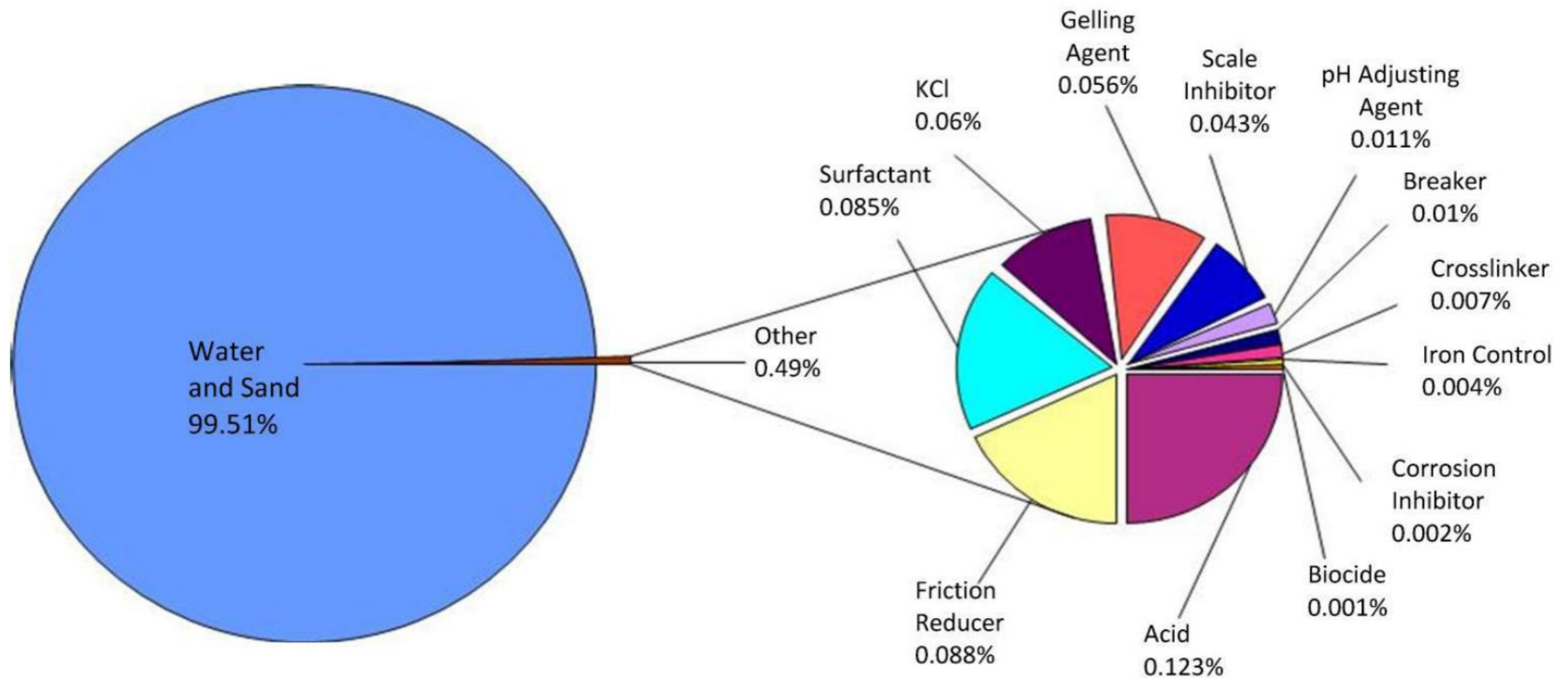
*Fast, Accurate, & Dirt Simple.
Real-time fluid analysis at the well
site.*

Water Lens System



Fast. Accurate. Dirt Simple.

Fracs are mostly water, but...



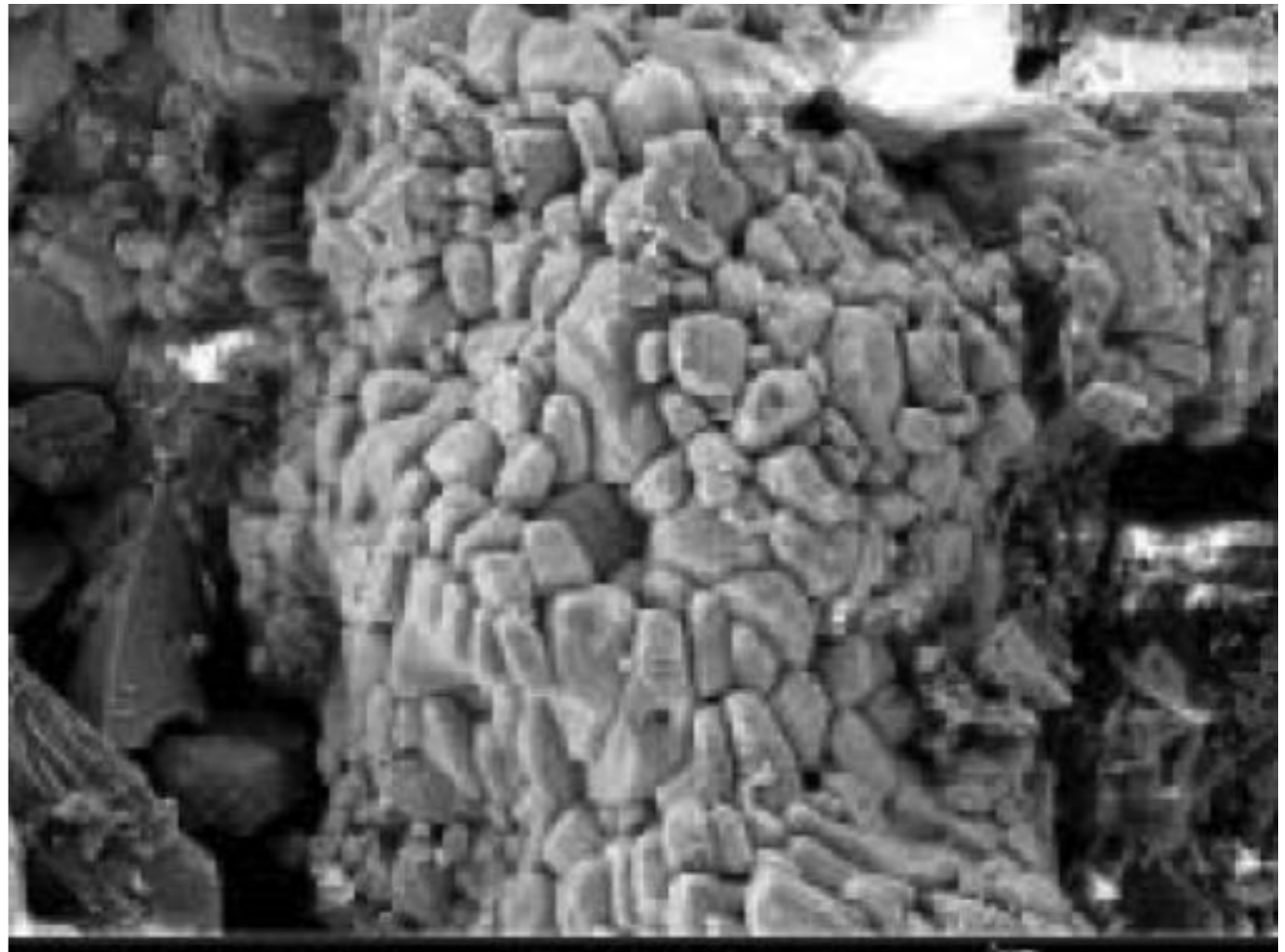
...What's in the water affects the quality of the frac.

Water Quality Continually Changes



Water Chemistry Problems Enhanced

- Wasted Chemicals
- Precipitation/Scaling
- Excessive Corrosion
- Fluids not gelling
- Friction reducers ineffective
- Screen-outs
- Clay swelling
- Hydration Issues
- Membrane Issues



Inadequate Solutions



Labs & Old-School Chemistry Kits

Water Quality is Key Success Factor

- Every well is different
- Every stage is different
- Every water is different
- How frac fluid relates to the formation = determinative factor
- The chemical composition of frac fluids is something that the operator can control for...and one of the cheapest to control.



We bring the power of this...



...to places like this.

