



# 2013

## EARTHWORKS Annual Report

Earthworks is a nonprofit organization dedicated to protecting communities and the environment from the adverse impacts of mineral and energy development while promoting sustainable solutions.



**EARTHWORKS**



# 2013 Top Accomplishments



Fish Eye Guy Photography

## Anglo American withdrew from the proposed Pebble Mine

International mining giant Anglo American withdrew from the proposed Pebble Mine project in mid-September, dealing a major blow to a mine that would exploit a vast swath of American wilderness and cause irreversible damage to the world's largest wild salmon fishery. To convince Anglo American to walk away and to gather the support needed to stop Pebble, we worked with a diverse group of partners, including local tribes, investors, jewelers, electronics companies and supermarkets. The fate of the mine is now in the hands of the EPA, which has the authority under the Clean Water Act to stop the mine once and for all.



Frack Free Colorado

## Local initiatives to ban fracking are popping up across the country

Earthworks is proud to support communities' right to control their future, including saying no to drilling or fracking. In Colorado, a state that has known the impacts of fracking for decades, we helped bring experts to public forums and to court to present the facts and dispel fiction. Winning at the ballot box is no small feat, and the Colorado towns that demanded bans aren't just protecting their own communities, they're setting an example and a precedent for communities from California to Texas to New York to do the same.



Northwest Rafting Co.

## Southwest Oregon rivers get official protection

The Interior Department protected two critical rivers in Southwest Oregon from mining, the Illinois River and the Chetco River. Thousands of letters from our supporters and technical comments from our staff, led the federal government to take action. The Chetco River withdrawal protects 17 miles of a world-class salmon and steelhead river for 5 years and 14 miles of one of the most popular stretches of river in the state from mining. The Illinois River is protected for 20 years.

From all of us at Earthworks, both our staff members and our Board of Directors, thank you for helping make 2013 a success. Your support makes our work possible, thank you!

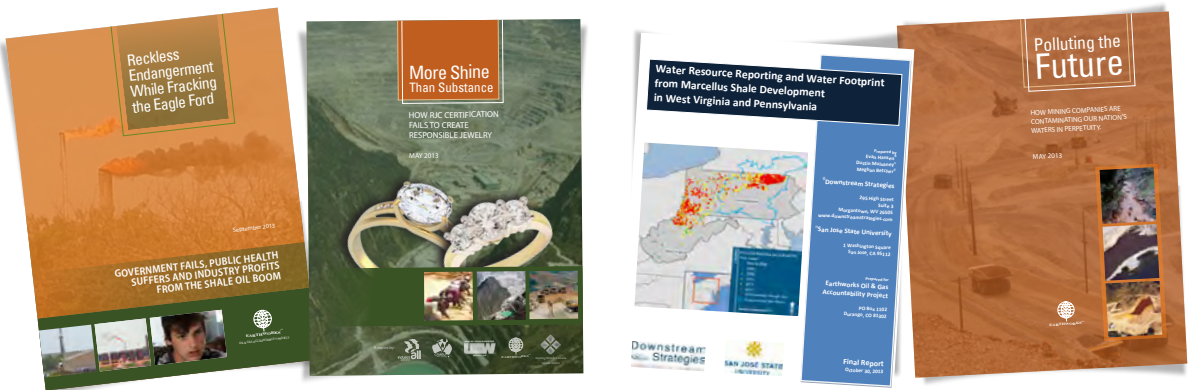
Join the conversation



In 2013 the Bureau of Land Management solicited comments on their proposed fracking regulations that could protect treasured public lands such as Roosevelt National Park. Earthworks members helped submit over one million comments in support of strong regulations to protect communities and the environment.

## Groundbreaking Research

Earthworks released four major reports in 2013 that have helped shape the discussion about mining, drilling and fracking. Find them at [earthworkSACTION.org/library](http://earthworkSACTION.org/library).



## Financials

### Income

Foundations	\$1,687,462
Individuals	\$252,790
Other	\$69,738

**Total Income: \$2,009,990**

**Year End Net Assets: \$649,557**

Earthworks' fiscal year begins on January 1 and ends on December 31. Audited financial statements and IRS forms 990 are available online or by request. To learn more about Earthworks or to make a donation, go to [earthworkSACTION.org](http://earthworkSACTION.org).

### Expenses

Programs	\$1,834,278
Fundraising	\$104,229
Admin/management	\$86,483

### Program Expenses Breakdown

Energy	\$989,796
Mining	\$503,964
General	\$187,253
Partnerships	\$153,265

- Alaskans for Responsible Mining
- Arizona Mining Reform Coalition
- Common Ground United
- Ethical Metalsmiths
- ShaleTest

**Total Expenses: \$2,024,990**



Earthworks participates in the Combined Federal Campaign #41290 and is a member of EarthShare, the national federation of environmental charities. EIN 52-1557765

**OUR SUPPORTERS:** Earthworks deeply appreciates the generous contributions of all our donors and supporters. Thank you for your commitment to protecting communities and the environment, which makes our work possible! 100% of Earthworks' budget is raised from private sources. Below, we recognize those who gave \$1,000 or more from January 1 to December 31, 2013 and our sustaining donors, whose monthly gifts keep us going throughout the year.

## Foundations, Corporations and Organizations

11th Hour Project  
A.H. Gage Private Foundation  
Alan and Marilyn Brown Fund  
Arkey Foundation  
Boxcar Press  
Brainerd Foundation  
California Wellness Foundation  
Chorus Foundation  
Civil Society Institute  
Clean Air Task Force  
CREDO  
Davies/Weeden Fund  
David and Lucile Packard Foundation  
EcoTrust  
Energy Foundation  
Fanwood Foundation  
Fidelity Charitable Gift Fund  
Flynkins Fund of the Horizons Foundation  
Goldman Environmental Foundation  
Gordon and Betty Moore Foundation  
Heinz Endowments  
ImpactAssets  
Carl W. Kohls Revocable Trust

Lia Fund  
Lisa & Douglas Goldman Fund  
Mancheski Foundation  
Marisla Foundation  
Marshall L. and Perrine D. McCune Charitable Foundation  
Meyer Levy Charitable Foundation  
Naiades Fund, a Giving Fund administered by ImpactAssets  
New-Land Foundation  
New World Foundation  
Normandie Foundation  
Overbrook Foundation  
Park Foundation  
Patagonia  
Post Carbon Institute  
Robert & Patricia Switzer Foundation  
Sacharuna Foundation  
Schwab Charitable Fund  
Steven Leuthold Family Foundation  
Swift Foundation  
Swimmer Family Foundation  
Threshold Foundation  
Tides Foundation  
Tiffany & Co. Foundation  
True North Foundation  
Turquoise Trail Preservation Trust

Underdog Fund of the Rose Foundation  
White Cedar Fund of Tides Foundation  
Wilburforce Foundation  
WildEarth Guardians  
William and Flora Hewlett Foundation  
William J.J. Gordon Family Foundation

## Defender Circle

*Individuals giving \$1,000 or more annually*

Geeta Aiyer  
Thomas Babinski  
Terry and Suzanne Burgess  
Greg Camalier  
Cathy Carlson  
Lynann Chance  
Anonymous (3)  
Anne Covert  
John Fisher  
Mona Goel  
David Gordon  
Paula Hawthorn  
Evan Husted  
Elizabeth Kantner  
Gigi Kellett and Noah Sawyer  
Susan Loesser  
Rick and Shirley McDonald  
Bill McNeill  
Jack & Peggy McNeill  
Gerrish Milliken  
Lani Monroe

Linda Nicholes  
Jon Rimmerman  
John Sauber  
Carolyn Stallard  
Blake Sweeney  
Paula Thomsen  
James Wellman  
Roger and Judy West

## Sustainability Circle

*Individuals making monthly contributions*

Georgiana Anderson  
William Brabender  
Deirdre Brown  
Robert Brown  
Roland Bryan  
Tom S. Budlong  
Thomas Camerata  
Matthew Childs  
Stephen Joel Coons  
Ann Corbett  
Robert E. Corkran  
Amber Cortez  
Anne Cowan  
Jonathan Davies  
Carol Etheridge  
Gloria Flora  
Bill Gardner  
Dewitt Garrett  
Christa Groeschel  
Steve Grover  
Paula Hawthorn  
Nancy Houk  
David H. Houseman  
Michael Hsu

Joanne and Dennis Keith  
Candice Key  
Susan Kingsley  
Steven Kocino  
June Koss  
Corbin W. Lambeth  
R.L. Latterell  
Midori Lee  
Karen Leroy  
Nancy Lovejoy  
Steven Lynch  
Pamela Mazzoline  
Paul McCormack  
Chris Moser  
James Murphy  
Stephen Neu  
Jill Nicholls  
David and Laura Nicol  
Clara Niemoller  
Mauri Nottingham  
Teresa Odendahl  
Francis J. Pinciotti  
Wesley Quigley  
Sigrid Ramos  
Kim Rasmussen  
J. Rusciollelli  
Susan Schrader  
Stanley Schroeder  
Antonio Trezzo  
David and Dee Tvedt  
Donna Unger  
Margaret Vos  
Roxanne Warren  
James Wellman  
Wilma A. Wheeler

A big thanks to the 40,000+ online activists and supporters who helped make 2013 a successful year! Special thanks also go to Combined Federal Campaign donors and all of those who voted for us on the CREDO charitable ballot.



**EARTHWORKS™**

### MAIN OFFICE

1612 K Street, NW, Suite 808  
Washington, DC 20006  
p: 202.887.1872 • f: 202.887.1875  
e: info@earthworksaction.org  
www.earthworksaction.org

 100% Windpower

### BOARD

Geeta Aiyer  
Cathy Carlson  
Ken Colburn  
Gloria Flora  
Jay Halfon, Esq.  
Paula Hawthorn, Ph.D.  
Tony Ingraffea, Ph.D., P.E.,  
*Secretary/Treasurer*  
Deborah Lawrence  
Bill McNeill, D.D.S., *Chair*  
Glenn Miller, Ph.D.  
Terry Odendahl, Ph.D.  
Mark Squillace, Esq.  
Wilma Subra

### STAFF

Jennifer Krill, *Executive Director*  
Jhon Arbelaez, *California Organizer*  
Bruce Baizel, *Energy Program Director*  
Ezra Berger, *Foundation Relations Officer*  
Ann Corbett, *Development Director*  
Pete Dronkers, *Southwest Circuit Rider*  
Bonnie Gestring, *Northwest Circuit Rider*  
Dusty Horwit, *Senior Analyst*  
Hilary Lewis, *Online Communications Coordinator*  
Shreema Mehta, *International Program Coordinator*  
Aaron Mintzes, *Policy Advocate*  
Lorraine Osinski, *Finance and Administrative Manager*  
Lauren Pagel, *Policy Director*  
Payal Sampat, *International Program Director*  
Alan Septoff, *Strategic Communications Director*  
Nadia Steinzor, *Eastern Program Coordinator*  
Sharon Wilson, *Gulf Regional Organizer*