

Six MCF Residential Gas Bill Analysis For Twenty-Five Texas Cities



GAS SERVICES DIVISION

January through December 2010

Introduction

This analysis presents five tables of summary natural gas cost of service and gas data reflecting comparative rates on a 6 Mcf gas bill for twenty-five Texas cities. These cities provide a diverse geographic representation of the State, and are served by three major publicly held gas utility service providers and two municipal gas utilities.

The Six Mcf consumption level reflects the approximate monthly average consumption of gas on an annual basis for the state, and is used in each table as a basis for comparison.

All other items such as special tariff rider fees, penalties, taxes, applicable city fees, etc., normally included in a gross bill are excluded here for purposes of base gas service rate comparison.

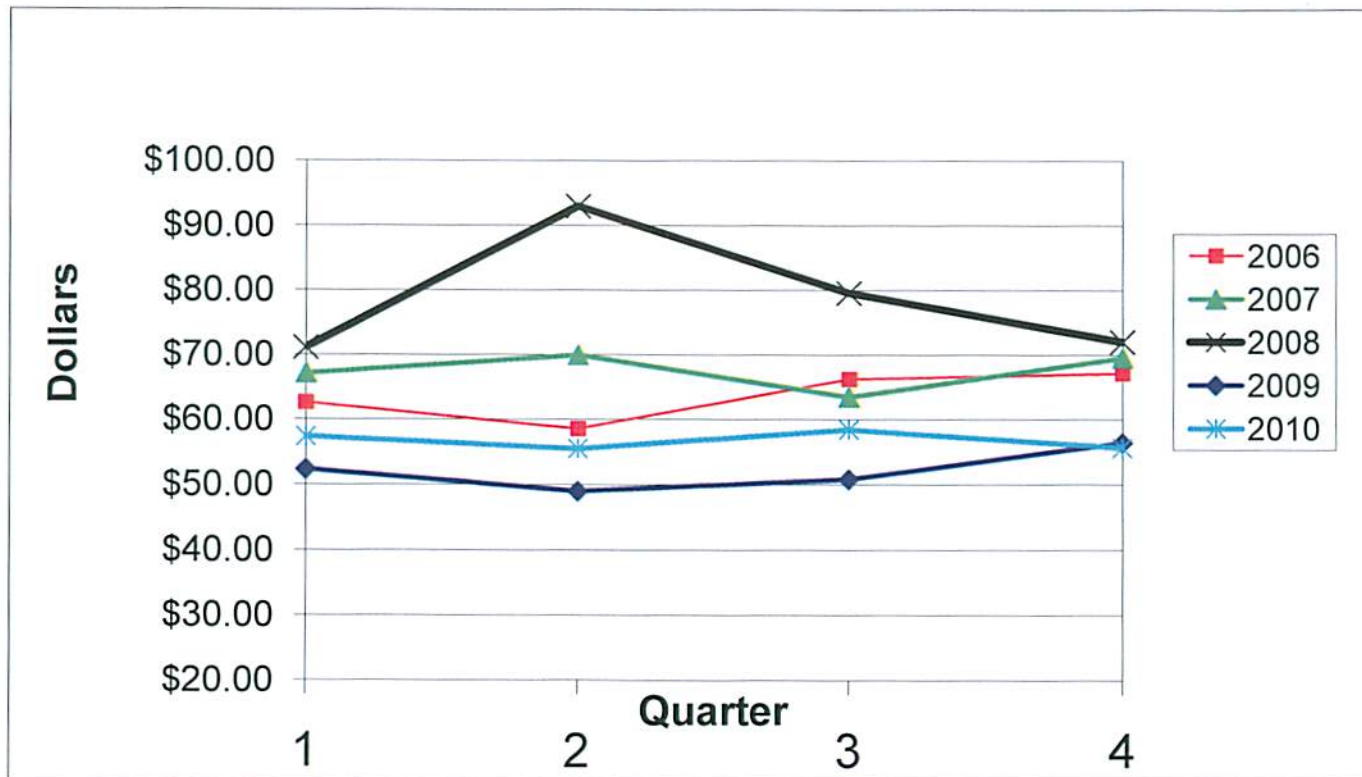
Table of Contents

Introduction	Page 1
Table 1 - Total Bill	Page 2
Chart 1a – Total Bill	Page 3
Table 2 - Analysis of Gas Bill	Pages 4-5
Table 3 - Cost of Gas	Page 6
Chart 3a & 3b – Cost of Gas	Pages 7-8
Table 4 - Analysis of Cost of Gas	Pages 9-10
Table 5 - Cost of Service	Page 11
Table 5a - Cost of Service	Page 12

**TABLE 1 - TWENTY FIVE TEXAS CITIES
SIX MCF RESIDENTIAL GAS BILL
TOTAL BILL
(Cost of Gas Plus Cost of Service)**

CITY	GAS CO.	JAN 10	FEB 10	MAR 10	APR 10	MAY 10	JUN 10	JUL 10	AUG 10	SEP 10	OCT 10	NOV 10	DEC 10
Abilene	ATM	55.91	52.88	50.78	50.78	52.75	50.71	65.40	67.91	64.55	64.16	60.20	57.04
Amarillo	ATM	53.86	51.21	56.63	48.02	45.92	45.99	51.21	49.60	45.15	42.82	43.34	47.85
Austin	TGS	55.69	57.34	50.83	47.69	49.29	47.99	51.20	50.07	46.30	44.60	43.28	46.77
Beaumont	CCE	74.53	82.69	82.69	82.69	82.69	82.69	82.69	69.21	69.21	69.21	69.21	67.35
Brownsville	TGS	61.70	60.83	54.62	49.09	50.69	49.46	55.88	52.79	48.52	48.87	46.22	53.90
Bryan	ATM	55.91	52.88	50.78	50.78	52.75	50.71	65.40	67.91	64.55	64.16	60.20	57.04
Corpus Christi	MUN	75.00	85.14	82.38	67.68	64.14	65.52	69.54	68.28	67.02	65.82	62.52	63.90
Dallas	ATM	53.67	49.96	47.86	48.75	50.72	48.68	63.37	65.88	62.52	60.45	56.49	53.33
El Paso	TGS	53.35	55.16	50.45	46.28	47.04	45.66	49.56	48.09	39.84	41.61	39.96	44.46
Fort Worth	ATM	55.91	52.88	50.78	50.78	52.75	50.71	65.40	67.91	64.55	64.16	60.20	57.04
Galveston	TGS	65.17	66.64	57.96	51.50	54.11	53.00	59.84	58.36	54.38	54.54	50.44	57.01
Houston	CEE	72.06	72.06	66.77	74.19	74.19	69.95	70.04	57.16	57.20	57.24	57.27	53.57
Laredo	CEE	58.31	65.21	65.21	65.21	65.21	65.21	65.21	57.79	57.79	57.79	57.79	54.84
Lubbock	ATM	58.97	56.33	61.73	49.49	51.05	51.11	56.33	53.81	48.77	46.43	46.97	47.63
McAllen	TGS	61.70	60.83	54.62	49.09	50.69	51.14	55.88	52.79	48.52	48.87	46.22	53.90
Midland	ATM	62.86	60.22	65.56	53.56	55.06	55.12	60.22	57.76	53.71	51.43	51.91	55.33
Odessa	ATM	62.26	61.60	64.90	52.48	51.76	51.10	50.92	53.98	53.71	51.43	51.91	55.33
San Angelo	ATM	55.91	52.88	50.78	50.78	52.75	50.71	65.40	67.91	64.55	64.16	60.20	57.04
San Antonio	MUN	70.61	34.20	34.20	34.20	52.52	55.03	54.73	55.81	49.37	51.14	48.58	57.15
Sherman	ATM	55.91	59.45	50.78	50.78	52.75	50.71	65.40	67.91	64.55	64.16	60.20	57.04
Temple	ATM	55.91	52.88	50.78	50.78	52.75	50.71	65.40	67.91	64.55	64.16	60.20	57.04
Texarkana	CEA	77.34	77.36	77.40	90.27	90.35	90.36	90.37	90.37	90.38	90.39	70.78	70.79
Tyler	CEE	51.28	55.03	55.03	55.03	55.03	55.03	55.03	55.03	53.38	53.38	53.38	52.19
Waco	ATM	55.91	52.88	50.78	50.78	52.75	50.71	65.40	67.91	64.55	64.16	60.20	57.04
Wichita Falls	ATM	55.91	52.88	50.78	50.78	52.75	50.71	65.40	67.91	64.55	64.16	60.20	57.04
Average		60.6272	59.2584	57.4048	54.8599	56.4999	55.5504	62.6105	61.6041	58.4879	57.9710	55.1138	55.6638

Chart 1a- Twenty Five Texas Cities
Six MCF Residential Gas Bill
Total Bill



**TABLE 2 - TWENTY FIVE TEXAS CITIES
SIX MCF RESIDENTIAL GAS BILL
ANALYSIS OF GAS BILL**

CITY	GAS CO.	Jan-10			Feb-10			Mar-10			Apr-10			May-10			Jun-10		
		A	B	C	A	B	C	A	B	C	A	B	C	A	B	C	A	B	C
Abilene	ATM	20.62	35.29	55.91	20.62	32.26	52.88	20.62	30.16	50.78	20.62	30.16	50.78	20.62	32.13	52.75	20.62	30.09	50.71
Amarillo	ATM	15.03	38.83	53.86	15.03	36.18	51.21	15.03	41.60	56.63	15.03	32.99	48.02	15.03	30.89	45.92	15.03	30.96	45.99
Austin	TGS	14.70	40.99	55.69	14.70	42.64	57.34	14.70	36.13	50.83	14.70	32.99	47.69	14.70	34.59	49.29	14.70	33.29	47.99
Beaumont	CEB	21.97	52.56	74.53	21.97	60.72	82.69	21.97	60.72	82.69	21.97	60.72	82.69	21.97	60.72	82.69	21.97	60.72	82.69
Brownsville	TGS	23.16	38.54	61.70	23.16	37.67	60.83	23.16	31.46	54.62	23.16	25.93	49.09	23.16	27.53	50.69	23.16	26.30	49.46
Bryan	ATM	20.62	35.29	55.91	20.62	32.26	52.88	20.62	30.16	50.78	20.62	30.16	50.78	20.62	32.13	52.75	20.62	30.09	50.71
Corpus Christ:	MUN	36.66	38.34	75.00	36.66	48.48	85.14	36.66	45.72	82.38	36.66	31.02	67.68	36.66	27.48	64.14	36.66	28.86	65.52
Dallas	ATM	17.70	35.97	53.67	17.70	32.26	49.96	17.70	30.16	47.86	18.59	30.16	48.75	18.59	32.13	50.72	18.59	30.09	48.68
El Paso	TGS	15.76	37.59	53.35	15.76	39.40	55.16	15.76	34.69	50.45	15.50	30.78	46.28	15.50	31.54	47.04	15.50	30.16	45.66
Fort Worth	ATM	20.62	35.29	55.91	20.62	32.26	52.88	20.62	30.16	50.78	20.62	30.16	50.78	20.62	32.13	52.75	20.62	30.09	50.71
Galveston	TGS	20.73	44.44	65.17	20.73	45.91	66.64	20.73	37.23	57.96	20.73	30.77	51.50	20.73	33.38	54.11	20.73	32.27	53.00
Houston	CEB	13.26	58.80	72.06	13.26	58.80	72.06	13.26	53.51	66.77	15.39	58.80	74.19	15.39	58.80	74.19	15.39	54.56	69.95
Laredo	CEB	23.41	34.90	58.31	23.41	41.80	65.21	23.41	41.80	65.21	23.41	41.80	65.21	23.41	41.80	65.21	23.41	41.80	65.21
Lubbock	ATM	18.71	40.26	58.97	18.71	37.62	56.33	18.71	43.02	61.73	18.71	30.78	49.49	18.71	32.34	51.05	18.71	32.40	51.11
McAllen	TGS	23.16	38.54	61.70	23.16	37.67	60.83	23.16	31.46	54.62	23.16	25.93	49.09	23.16	27.53	50.69	24.84	26.30	51.14
Midland	ATM	23.74	39.12	62.86	23.74	36.48	60.22	23.74	41.82	65.56	23.74	29.82	53.56	23.74	31.32	55.06	23.74	31.38	55.12
Odessa	ATM	23.74	38.52	62.26	23.74	37.86	61.60	23.74	41.16	64.90	23.74	28.74	52.48	23.74	28.02	51.76	23.74	27.36	51.10
San Angelo	ATM	20.62	35.29	55.91	20.62	32.26	52.88	20.62	30.16	50.78	20.62	30.16	50.78	20.62	32.13	52.75	20.62	30.09	50.71
San Antonio	MUN	21.00	36.41	70.61	21.00	0.00	34.20	21.00	0.00	34.20	21.00	0.00	34.20	21.00	18.32	52.52	21.00	20.83	55.03
Sherman	ATM	20.62	35.29	55.91	20.62	38.83	59.45	20.62	30.16	50.78	20.62	30.16	50.78	20.62	32.13	52.75	20.62	30.09	50.71
Temple	ATM	20.62	35.29	55.91	20.62	32.26	52.88	20.62	30.16	50.78	20.62	30.16	50.78	20.62	32.13	52.75	20.62	30.09	50.71
Texarkana	CEA	30.54	46.80	77.34	30.54	46.82	77.36	30.54	46.86	77.40	30.54	59.73	90.27	30.54	59.81	90.35	30.54	59.82	90.36
Tyler	CEB	21.22	30.06	51.28	21.22	33.81	55.03	21.22	33.81	55.03	21.22	33.81	55.03	21.22	33.81	55.03	21.22	33.81	55.03
Waco	ATM	20.62	35.29	55.91	20.62	32.26	52.88	20.62	30.16	50.78	20.62	30.16	50.78	20.62	32.13	52.75	20.62	30.09	50.71
Wichita Falls	ATM	20.62	35.29	55.91	20.62	32.26	52.88	20.62	30.16	50.78	20.62	30.16	50.78	20.62	32.13	52.75	20.62	30.09	50.71
Average		21.18	38.92	60.63	21.18	37.55	59.26	21.18	35.70	57.40	21.29	33.04	54.86	21.29	34.68	56.50	21.36	33.67	55.55

A-COST OF SERVICE (EXCLUDING COST OF GAS)

B-COST OF GAS (INCLUDES COST OF GAS IN BASE PLUS COST OF GAS ADJUSTMENT)

C-TOTAL BILL (TOTAL COST OF GAS PLUS COST OF SERVICE)

**TABLE 2 - TWENTY FIVE TEXAS CITIES
SIX MCF RESIDENTIAL GAS BILL
ANALYSIS OF GAS BILL**

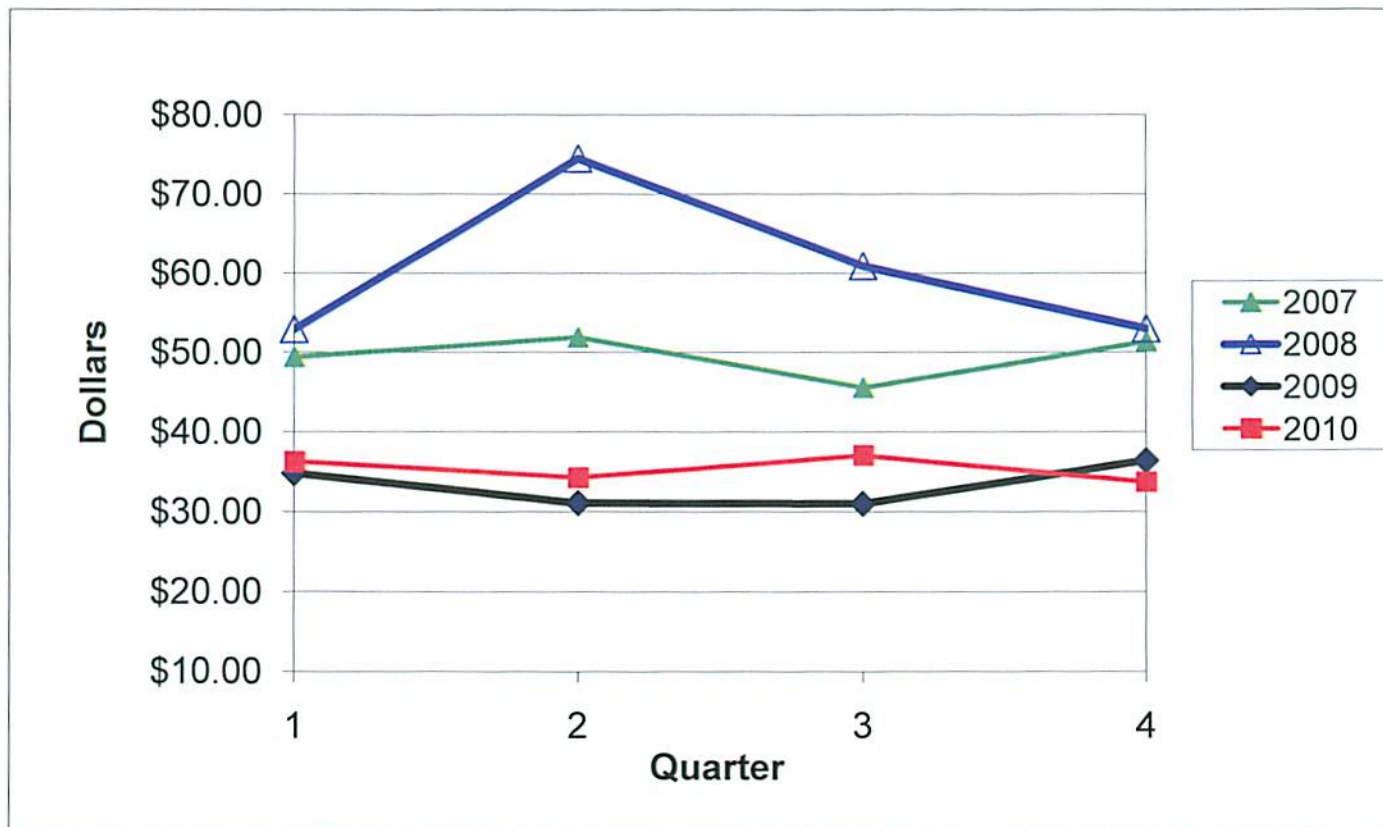
Jul-10			Aug-10			Sep-10			Oct-10			Nov-10			Dec-10			GAS CO. CITY	
A	B	C	A	B	C	A	B	C	A	B	C	A	B	C	A	B	C		
20.62	44.78	65.40	20.62	47.29	67.91	20.62	43.93	64.55	22.30	41.86	64.16	22.30	37.90	60.20	22.30	34.74	57.04	ATM	Abilene
15.03	36.18	51.21	15.93	33.67	49.60	15.93	29.22	45.15	15.93	26.89	42.82	15.93	27.41	43.34	15.93	31.92	47.85	ATM	Amarillo
14.70	36.50	51.20	14.70	35.37	50.07	14.70	31.60	46.30	14.70	29.90	44.60	14.70	28.58	43.28	14.70	32.07	46.77	TGS	Austin
21.97	60.72	82.69	21.57	47.64	69.21	21.57	47.64	69.21	21.57	47.64	69.21	21.57	47.64	69.21	21.57	45.78	67.35	CEE	Beaumont
24.84	31.04	55.88	24.84	27.95	52.79	24.84	23.68	48.52	24.84	24.03	48.87	24.84	21.38	46.22	24.84	29.06	53.90	TGS	Brownsville
20.62	44.78	65.40	20.62	47.29	67.91	20.62	43.93	64.55	22.30	41.86	64.16	22.30	37.90	60.20	22.30	34.74	57.04	ATM	Bryan
36.66	32.88	69.54	36.66	31.62	68.28	36.66	30.36	67.02	36.66	29.16	65.82	36.66	25.86	62.52	36.66	27.24	63.90	MUN	Corpus Christi
18.59	44.78	63.37	18.59	47.29	65.88	18.59	43.93	62.52	18.59	41.86	60.45	18.59	37.90	56.49	18.59	34.74	53.33	ATM	Dallas
15.50	34.06	49.56	15.50	32.59	48.09	15.50	24.34	39.84	15.50	26.11	41.61	15.50	24.46	39.96	15.50	28.96	44.46	TGS	El Paso
20.62	44.78	65.40	20.62	47.29	67.91	20.62	43.93	64.55	22.30	41.86	64.16	22.30	37.90	60.20	22.30	34.74	57.04	ATM	Fort Worth
22.15	37.69	59.84	22.15	36.21	58.36	22.15	32.23	54.38	22.15	32.39	54.54	22.15	28.29	50.44	22.15	34.86	57.01	TGS	Galveston
15.39	54.65	70.04	15.39	41.77	57.16	15.39	41.81	57.20	15.39	41.85	57.24	15.39	41.88	57.27	15.39	38.18	53.57	CEE	Houston
23.41	41.80	65.21	23.41	34.38	57.79	23.41	34.38	57.79	23.41	34.38	57.79	23.41	34.38	57.79	23.41	31.43	54.84	CEE	Laredo
18.71	37.62	56.33	18.71	35.10	53.81	18.11	30.66	48.77	18.11	28.32	46.43	18.11	28.86	46.97	18.11	29.52	47.63	ATM	Lubbock
24.84	31.04	55.88	24.84	27.95	52.79	24.84	23.68	48.52	24.84	24.03	48.87	24.84	21.38	46.22	24.84	29.06	53.90	TGS	McAllen
23.74	36.48	60.22	23.74	34.02	57.76	24.01	29.70	53.71	24.01	27.42	51.43	24.01	27.90	51.91	24.01	31.32	55.33	ATM	Midland
23.74	27.18	50.92	23.74	30.24	53.98	24.01	29.70	53.71	24.01	27.42	51.43	24.01	27.90	51.91	24.01	31.32	55.33	ATM	Odessa
20.62	44.78	65.40	20.62	47.29	67.91	20.62	43.93	64.55	22.30	41.86	64.16	22.30	37.90	60.20	22.30	34.74	57.04	ATM	San Angelo
21.00	20.53	54.73	21.00	21.61	55.81	21.00	15.17	49.37	21.00	16.94	51.14	21.00	14.38	48.58	21.00	22.95	57.15	MUN	San Antonio
20.62	44.78	65.40	20.62	47.29	67.91	20.62	43.93	64.55	22.30	41.86	64.16	22.30	37.90	60.20	22.30	34.74	57.04	ATM	Sherman
20.62	44.78	65.40	20.62	47.29	67.91	20.62	43.93	64.55	22.30	41.86	64.16	22.30	37.90	60.20	22.30	34.74	57.04	ATM	Temple
30.54	59.83	90.37	30.54	59.83	90.37	30.54	59.84	90.38	30.54	59.85	90.39	30.54	40.24	70.78	30.54	40.25	70.79	CEA	Texarkana
21.22	33.81	55.03	21.22	33.81	55.03	21.22	32.16	53.38	21.22	32.16	53.38	21.22	32.16	53.38	21.22	30.97	52.19	CEE	Tyler
20.62	44.78	65.40	20.62	47.29	67.91	20.62	43.93	64.55	22.30	41.86	64.16	22.30	37.90	60.20	22.30	34.74	57.04	ATM	Waco
20.62	44.78	65.40	20.62	47.29	67.91	20.62	43.93	64.55	22.30	41.86	64.16	22.30	37.90	60.20	22.30	34.74	57.04	ATM	Wichita Falls
21.48	40.60	62.61	21.50	39.57	61.60	21.50	36.46	58.49	22.03	35.41	57.97	22.03	32.55	55.11	22.03	33.10	55.66		Average

**TABLE 3 - TWENTY FIVE TEXAS CITIES
SIX MCF RESIDENTIAL GAS BILL
***COST OF GAS
(EXCLUDING COST OF SERVICE)**

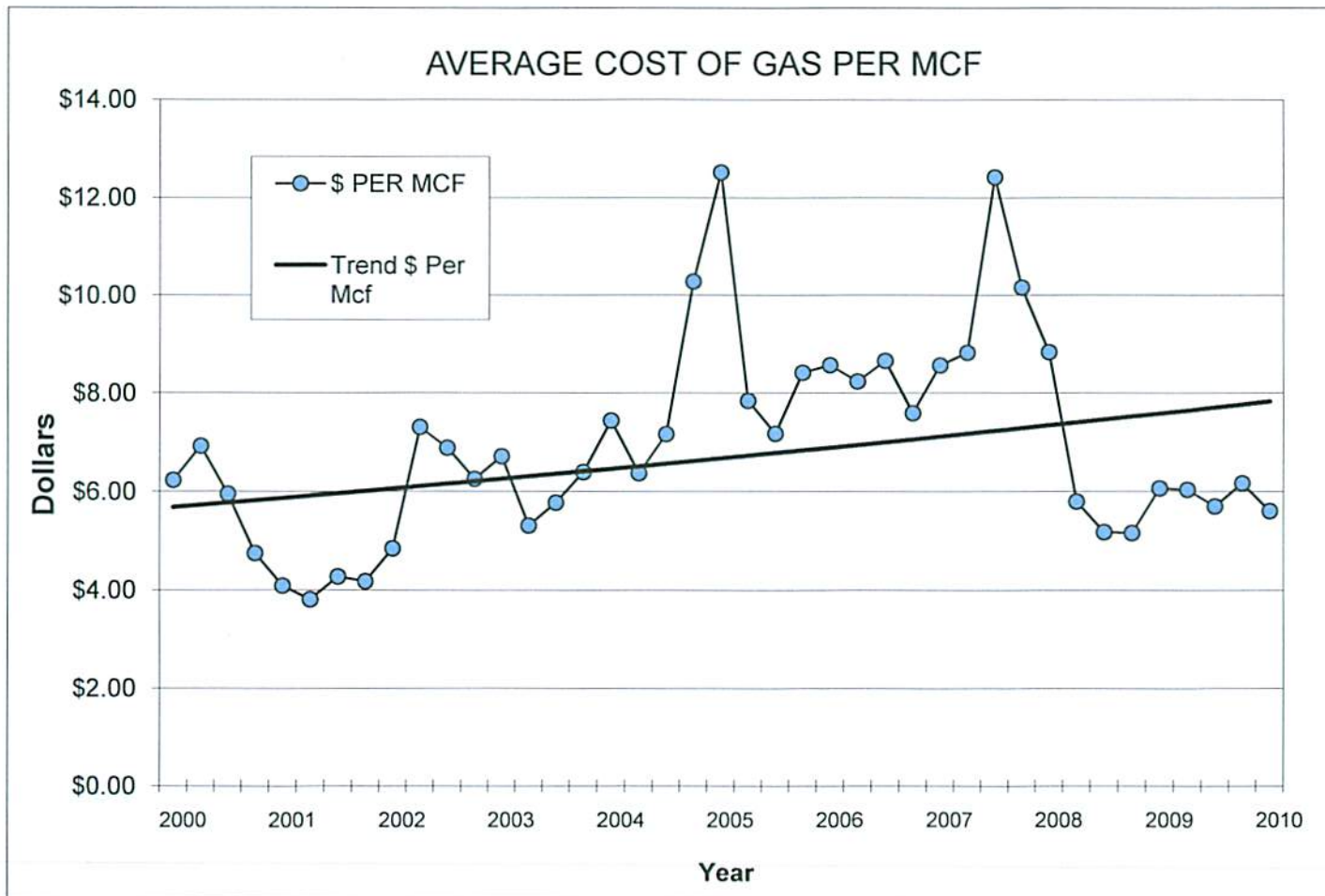
CITY	GAS CO.	Jan-10	Feb-10	Mar-10	Apr-10	May-10	Jun-10	Jul-10	Aug-10	Sep-10	Oct-10	Nov-10	Dec-10
Abilene	ATM	35.29	32.26	30.16	30.16	32.13	30.09	44.78	47.29	43.93	41.86	37.90	34.74
Amarillo	ATM	38.83	36.18	41.60	32.99	30.89	30.96	36.18	33.67	29.22	26.89	27.41	31.92
Austin	TGS	40.99	42.64	36.13	32.99	34.59	33.29	36.50	35.37	31.60	29.90	28.58	32.07
Beaumont	CEE	52.56	60.72	60.72	60.72	60.72	60.72	60.72	47.64	47.64	47.64	47.64	45.78
Brownsville	TGS	38.54	37.67	31.46	25.93	27.53	26.30	31.04	27.95	23.68	24.03	21.38	29.06
Bryan	ATM	35.29	32.26	30.16	30.16	32.13	30.09	44.78	47.29	43.93	41.86	37.90	34.74
Corpus Christi	MUN	38.34	48.48	45.72	31.02	27.48	28.86	32.88	31.62	30.36	29.16	25.86	27.24
Dallas	ATM	35.97	32.26	30.16	30.16	32.13	30.09	44.78	47.29	43.93	41.86	37.90	34.74
El Paso	TGS	37.59	39.40	34.69	30.78	31.54	30.16	34.06	32.59	24.34	26.11	24.46	28.96
Fort Worth	ATM	35.29	32.26	30.16	30.16	32.13	30.09	44.78	47.29	43.93	41.86	37.90	34.74
Galveston	TGS	44.44	45.91	37.23	30.77	33.38	32.27	37.69	36.21	32.23	32.39	28.29	34.86
Houston	CEE	58.80	58.80	53.51	58.80	58.80	54.56	54.65	41.77	41.81	41.85	41.88	38.18
Laredo	CEE	34.90	41.80	41.80	41.80	41.80	41.80	41.80	34.38	34.38	34.38	34.38	31.43
Lubbock	ATM	40.26	37.62	43.02	30.78	32.34	32.40	37.62	35.10	30.66	28.32	28.86	29.52
McAllen	TGS	38.54	37.67	31.46	25.93	27.53	26.30	31.04	27.95	23.68	24.03	21.38	29.06
Midland	ATM	39.12	36.48	41.82	29.82	31.32	31.38	36.48	34.02	29.70	27.42	27.90	31.32
Odessa	ATM	38.52	37.86	41.16	28.74	28.02	27.36	27.18	30.24	29.70	27.42	27.90	31.32
San Angelo	ATM	35.29	32.26	30.16	30.16	32.13	30.09	44.78	47.29	43.93	41.86	37.90	34.74
San Antonio	MUN	49.61	13.20	13.20	13.20	31.52	34.03	33.73	34.81	28.37	30.14	27.58	36.15
Sherman	ATM	35.29	38.83	30.16	30.16	32.13	30.09	44.78	47.29	43.93	41.86	37.90	34.74
Temple	ATM	35.29	32.26	30.16	30.16	32.13	30.09	44.78	47.29	43.93	41.86	37.90	34.74
Texarkana	CEA	46.80	46.82	46.86	59.73	59.81	59.82	59.83	59.83	59.84	59.85	40.24	40.25
Tyler	CEE	30.06	33.81	33.81	33.81	33.81	33.81	33.81	33.81	32.16	32.16	32.16	30.97
Waco	ATM	35.29	32.26	30.16	30.16	32.13	30.09	44.78	47.29	43.93	41.86	37.90	34.74
Wichita Falls	ATM	35.29	32.26	30.16	30.16	32.13	30.09	44.78	47.29	43.93	41.86	37.90	34.74
Average		39.45	38.08	36.23	33.57	35.21	34.19	41.13	40.10	36.99	35.94	33.08	33.63

***INCLUDES COST OF GAS IN BASE RATE PLUS COST OF GAS ADJUSTMENT.

Chart 3a- Twenty Five Texas Cities
Six MCF Residential Gas Bill
Cost of Gas



Twenty Five Texas Cities Six MCF Residential Gas Bill Cost of Gas



**TABLE 4 - TWENTY FIVE TEXAS CITIES
SIX MCF RESIDENTIAL GAS BILL
ANALYSIS OF COST OF GAS**

CITY	GAS CO.	Jan-10			Feb-10			Mar-10			Apr-10			May-10			Jun-10			
		A	B	C	A	B	C	A	B	C	A	B	C	A	B	C	A	B	C	
Abilene	ATM	0.00	20.62	20.62	0.00	32.26	32.26	0.00	30.16	30.16	0.00	30.16	30.16	0.00	32.13	32.13	0.00	30.09	30.09	
Amarillo	ATM	0.00	15.03	15.03	0.00	36.18	36.18	0.00	41.60	41.60	0.00	32.99	32.99	0.00	30.89	30.89	0.00	30.96	30.96	
Austin	TGS	0.00	14.70	14.70	0.00	42.64	42.64	0.00	36.13	36.13	0.00	32.99	32.99	0.00	34.59	34.59	0.00	33.29	33.29	
Beaumont	CEE	0.00	21.97	21.97	0.00	60.72	60.72	0.00	60.72	60.72	0.00	60.72	60.72	0.00	60.72	60.72	0.00	60.72	60.72	
Brownsville	TGS	0.00	23.16	23.16	0.00	37.67	37.67	0.00	31.46	31.46	0.00	25.93	25.93	0.00	27.53	27.53	0.00	26.30	26.30	
Bryan	ATM	0.00	20.62	20.62	0.00	32.26	32.26	0.00	30.16	30.16	0.00	30.16	30.16	0.00	32.13	32.13	0.00	30.09	30.09	
Corpus Christi	MUN	0.00	36.66	36.66	0.00	48.48	48.48	0.00	45.72	45.72	0.00	31.02	31.02	0.00	27.48	27.48	0.00	28.86	28.86	
Dallas	ATM	0.00	17.70	17.70	0.00	32.26	32.26	0.00	30.16	30.16	0.00	30.16	30.16	0.00	32.13	32.13	0.00	30.09	30.09	
El Paso	TGS	0.00	15.76	15.76	0.00	39.40	39.40	0.00	34.69	34.69	0.00	30.78	30.78	0.00	31.54	31.54	0.00	30.16	30.16	
Fort Worth	ATM	0.00	20.62	20.62	0.00	32.26	32.26	0.00	30.16	30.16	0.00	30.16	30.16	0.00	32.13	32.13	0.00	30.09	30.09	
Galveston	TGS	0.00	20.73	20.73	0.00	45.91	45.91	0.00	37.23	37.23	0.00	30.77	30.77	0.00	33.38	33.38	0.00	32.27	32.27	
Houston	CEE	0.00	13.26	13.26	0.00	58.80	58.80	0.00	53.51	53.51	0.00	58.80	58.80	0.00	58.80	58.80	0.00	54.56	54.56	
Laredo	CEE	0.00	23.41	23.41	0.00	41.80	41.80	0.00	41.80	41.80	0.00	41.80	41.80	0.00	41.80	41.80	0.00	41.80	41.80	
Lubbock	ATM	0.00	18.71	18.71	0.00	37.62	37.62	0.00	43.02	43.02	0.00	30.78	30.78	0.00	32.34	32.34	0.00	32.40	32.40	
McAllen	TGS	0.00	23.16	23.16	0.00	37.67	37.67	0.00	31.46	31.46	0.00	25.93	25.93	0.00	27.53	27.53	0.00	26.30	26.30	
Midland	ATM	0.00	23.74	23.74	0.00	36.48	36.48	0.00	41.82	41.82	0.00	29.82	29.82	0.00	31.32	31.32	0.00	31.38	31.38	
Odessa	ATM	0.00	23.74	23.74	0.00	37.86	37.86	0.00	41.16	41.16	0.00	28.74	28.74	0.00	28.02	28.02	0.00	27.36	27.36	
San Angelo	ATM	0.00	20.62	20.62	0.00	32.26	32.26	0.00	30.16	30.16	0.00	30.16	30.16	0.00	32.13	32.13	0.00	30.09	30.09	
San Antonio	MUN	13.20	21.00	34.20	13.20	0.00	13.20	13.20	0.00	13.20	13.20	13.20	0.00	13.20	13.20	18.32	31.52	13.20	20.83	34.03
Sherman	ATM	0.00	20.62	20.62	0.00	38.83	38.83	0.00	30.16	30.16	0.00	30.16	30.16	0.00	32.13	32.13	0.00	30.09	30.09	
Temple	ATM	0.00	20.62	20.62	0.00	32.26	32.26	0.00	30.16	30.16	0.00	30.16	30.16	0.00	32.13	32.13	0.00	30.09	30.09	
Texarkana	CEA	0.00	30.54	30.54	0.00	46.82	46.82	0.00	46.86	46.86	0.00	59.73	59.73	0.00	59.81	59.81	0.00	59.82	59.82	
Tyler	CEE	0.00	21.22	21.22	0.00	33.81	33.81	0.00	33.81	33.81	0.00	33.81	33.81	0.00	33.81	33.81	0.00	33.81	33.81	
Waco	ATM	0.00	20.62	20.62	0.00	32.26	32.26	0.00	30.16	30.16	0.00	30.16	30.16	0.00	32.13	32.13	0.00	30.09	30.09	
Wichita Falls	ATM	0.00	20.62	20.62	0.00	32.26	32.26	0.00	30.16	30.16	0.00	30.16	30.16	0.00	32.13	32.13	0.00	30.09	30.09	
Average		0.53	21.18	21.71	0.53	37.55	38.08	0.53	35.70	36.23	0.53	33.04	33.57	0.53	34.68	35.21	0.53	33.67	34.19	

A-COST OF GAS INCLUDED IN BASE RATE
B-COST OF GAS ADJUSTMENT
C-TOTAL COST OF GAS

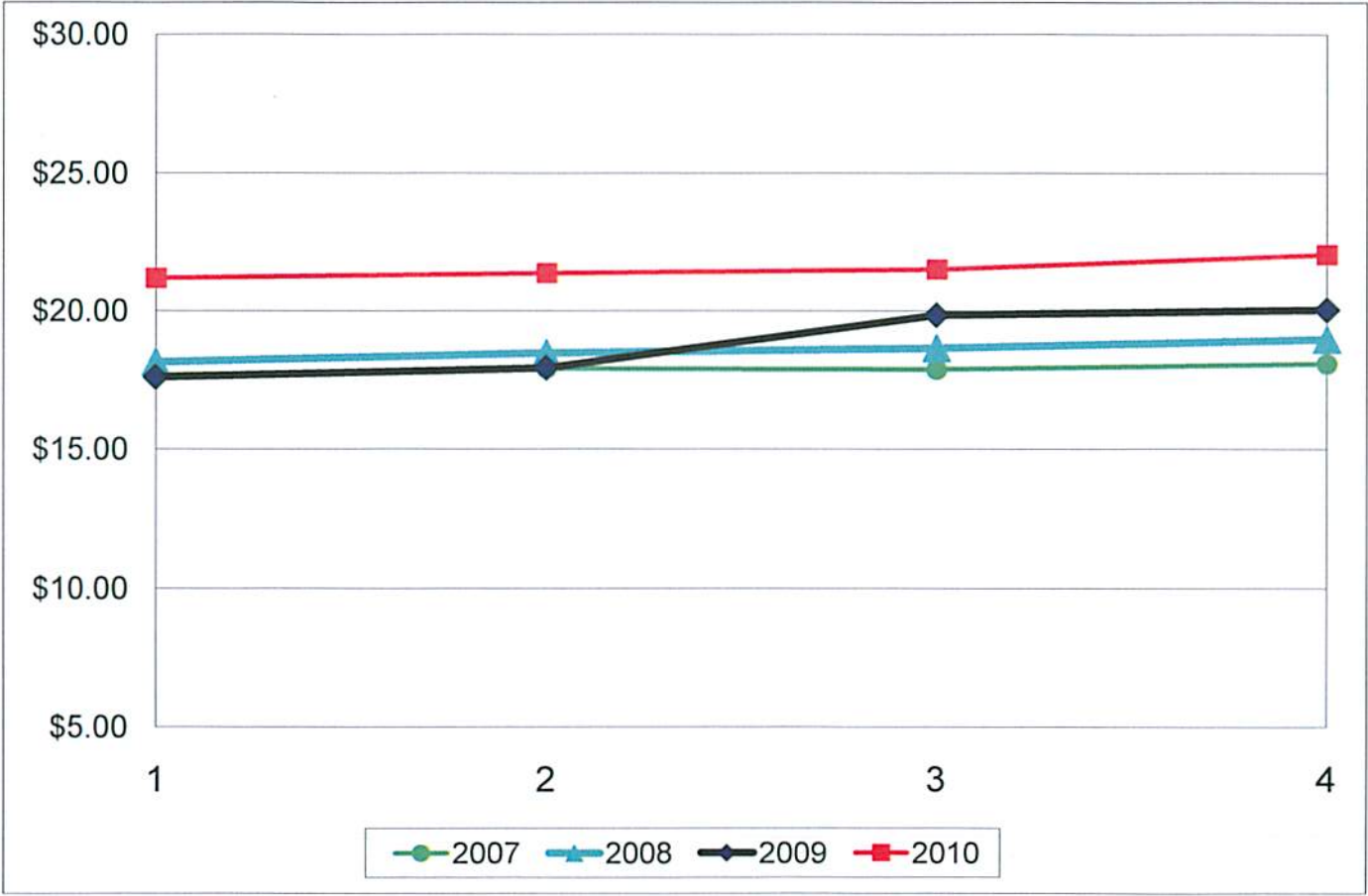
**TABLE 4 - TWENTY FIVE TEXAS CITIES
SIX MCF RESIDENTIAL GAS BILL
ANALYSIS OF COST OF GAS**

Jul-10			Aug-10			Sep-10			Oct-10			Nov-10			Dec-10			GAS CO.	CITY
A	B	C	A	B	C	A	B	C	A	B	C	A	B	C	A	B	C		
0.00	44.78	44.78	0.00	47.29	47.29	0.00	43.93	43.93	0.00	41.86	41.86	0.00	37.90	37.90	0.00	34.74	34.74	ATM	Abilene
0.00	36.18	36.18	0.00	33.67	33.67	0.00	29.22	29.22	0.00	26.89	26.89	0.00	27.41	27.41	0.00	31.92	31.92	ATM	Amarillo
0.00	36.50	36.50	0.00	35.37	35.37	0.00	31.60	31.60	0.00	29.90	29.90	0.00	28.58	28.58	0.00	32.07	32.07	TGS	Austin
0.00	60.72	60.72	0.00	47.64	47.64	0.00	47.64	47.64	0.00	47.64	47.64	0.00	47.64	47.64	0.00	45.78	45.78	CEE	Beaumont
0.00	31.04	31.04	0.00	27.95	27.95	0.00	23.68	23.68	0.00	24.03	24.03	0.00	21.38	21.38	0.00	29.06	29.06	TGS	Brownsville
0.00	44.78	44.78	0.00	47.29	47.29	0.00	43.93	43.93	0.00	41.86	41.86	0.00	37.90	37.90	0.00	34.74	34.74	ATM	Bryan
0.00	32.88	32.88	0.00	31.62	31.62	0.00	30.36	30.36	0.00	29.16	29.16	0.00	25.86	25.86	0.00	27.24	27.24	MUN	Corpus Christi
0.00	44.78	44.78	0.00	47.29	47.29	0.00	43.93	43.93	0.00	41.86	41.86	0.00	37.90	37.90	0.00	34.74	34.74	ATM	Dallas
0.00	34.06	34.06	0.00	32.59	32.59	0.00	24.34	24.34	0.00	26.11	26.11	0.00	24.46	24.46	0.00	28.96	28.96	TGS	El Paso
0.00	44.78	44.78	0.00	47.29	47.29	0.00	43.93	43.93	0.00	41.86	41.86	0.00	37.90	37.90	0.00	34.74	34.74	ATM	Fort Worth
0.00	37.69	37.69	0.00	36.21	36.21	0.00	32.23	32.23	0.00	32.39	32.39	0.00	28.29	28.29	0.00	34.86	34.86	TGS	Galveston
0.00	54.65	54.65	0.00	41.77	41.77	0.00	41.81	41.81	0.00	41.85	41.85	0.00	41.88	41.88	0.00	38.18	38.18	CEE	Houston
0.00	41.80	41.80	0.00	34.38	34.38	0.00	34.38	34.38	0.00	34.38	34.38	0.00	34.38	34.38	0.00	31.43	31.43	CEE	Laredo
0.00	37.62	37.62	0.00	35.10	35.10	0.00	30.66	30.66	0.00	28.32	28.32	0.00	28.86	28.86	0.00	29.52	29.52	ATM	Lubbock
0.00	31.04	31.04	0.00	27.95	27.95	0.00	23.68	23.68	0.00	24.03	24.03	0.00	21.38	21.38	0.00	29.06	29.06	TGS	McAllen
0.00	36.48	36.48	0.00	34.02	34.02	0.00	29.70	29.70	0.00	27.42	27.42	0.00	27.90	27.90	0.00	31.32	31.32	ATM	Midland
0.00	27.18	27.18	0.00	30.24	30.24	0.00	29.70	29.70	0.00	27.42	27.42	0.00	27.90	27.90	0.00	31.32	31.32	ATM	Odessa
0.00	44.78	44.78	0.00	47.29	47.29	0.00	43.93	43.93	0.00	41.86	41.86	0.00	37.90	37.90	0.00	34.74	34.74	ATM	San Angelo
13.20	20.53	33.73	13.20	21.61	34.81	13.20	15.17	28.37	13.20	16.94	30.14	13.20	14.38	14.38	13.20	22.95	36.15	MUN	San Antonio
0.00	44.78	44.78	0.00	47.29	47.29	0.00	43.93	43.93	0.00	41.86	41.86	0.00	37.90	37.90	0.00	34.74	34.74	ATM	Sherman
0.00	44.78	44.78	0.00	47.29	47.29	0.00	43.93	43.93	0.00	41.86	41.86	0.00	37.90	37.90	0.00	34.74	34.74	ATM	Temple
0.00	59.83	59.83	0.00	59.83	59.83	0.00	59.84	59.84	0.00	59.85	59.85	0.00	40.24	40.24	0.00	40.25	40.25	CEA	Texarkana
0.00	33.81	33.81	0.00	33.81	33.81	0.00	32.16	32.16	0.00	32.16	32.16	0.00	32.16	32.16	0.00	30.97	30.97	CEE	Tyler
0.00	44.78	44.78	0.00	47.29	47.29	0.00	43.93	43.93	0.00	41.86	41.86	0.00	37.90	37.90	0.00	34.74	34.74	ATM	Waco
0.00	44.78	44.78	0.00	47.29	47.29	0.00	43.93	43.93	0.00	41.86	41.86	0.00	37.90	37.90	0.00	34.74	34.74	ATM	Wichita Falls
0.53	40.60	41.13	0.53	39.57	40.10	0.53	36.46	36.99	0.53	35.41	35.94	0.53	32.55	32.55	0.53	33.10	33.63		Average

**TABLE 5 - TWENTY FIVE TEXAS CITIES
SIX MCF RESIDENTIAL GAS BILL
COST OF SERVICE
(EXCLUDING COST OF GAS)**

CITY	GAS CO.	Jan-09	Feb-09	Mar-09	Apr-09	May-09	Jun-09	Jul-09	Aug-09	Sep-09	Oct-09	Nov-09	Dec-09
Abilene	ATM	20.62	20.62	20.62	20.62	20.62	20.62	20.62	20.62	20.62	22.30	22.30	22.30
Amarillo	ATM	15.03	15.03	15.03	15.03	15.03	15.03	15.03	15.93	15.93	15.93	15.93	15.93
Austin	TGS	14.70	14.70	14.70	14.70	14.70	14.70	14.70	14.70	14.70	14.70	14.70	14.70
Beaumont	CEE	21.97	21.97	21.97	21.97	21.97	21.97	21.97	21.57	21.57	21.57	21.57	21.57
Brownsville	TGS	23.16	23.16	23.16	23.16	23.16	23.16	24.84	24.84	24.84	24.84	24.84	24.84
Bryan	ATM	20.62	20.62	20.62	20.62	20.62	20.62	20.62	20.62	20.62	22.30	22.30	22.30
Corpus Christi	MUN	36.66	36.66	36.66	36.66	36.66	36.66	36.66	36.66	36.66	36.66	36.66	36.66
Dallas	ATM	17.70	17.70	17.70	18.59	18.59	18.59	18.59	18.59	18.59	18.59	18.59	18.59
El Paso	TGS	15.76	15.76	15.76	15.50	15.50	15.50	15.50	15.50	15.50	15.50	15.50	15.50
Fort Worth	ATM	20.62	20.62	20.62	20.62	20.62	20.62	20.62	20.62	20.62	22.30	22.30	22.30
Galveston	TGS	20.73	20.73	20.73	20.73	20.73	20.73	22.15	22.15	22.15	22.15	22.15	22.15
Houston	CEE	13.26	13.26	13.26	15.39	15.39	15.39	15.39	15.39	15.39	15.39	15.39	15.39
Laredo	CEE	23.41	23.41	23.41	23.41	23.41	23.41	23.41	23.41	23.41	23.41	23.41	23.41
Lubbock	ATM	18.71	18.71	18.71	18.71	18.71	18.71	18.71	18.71	18.11	18.11	18.11	18.11
McAllen	TGS	23.16	23.16	23.16	23.16	23.16	24.84	24.84	24.84	24.84	24.84	24.84	24.84
Midland	ATM	23.74	23.74	23.74	23.74	23.74	23.74	23.74	23.74	24.01	24.01	24.01	24.01
Odessa	ATM	23.74	23.74	23.74	23.74	23.74	23.74	23.74	23.74	24.01	24.01	24.01	24.01
San Angelo	ATM	20.62	20.62	20.62	20.62	20.62	20.62	20.62	20.62	20.62	22.30	22.30	22.30
San Antonio	MUN	21.00	21.00	21.00	21.00	21.00	21.00	21.00	21.00	21.00	21.00	21.00	21.00
Sherman	ATM	20.62	20.62	20.62	20.62	20.62	20.62	20.62	20.62	20.62	22.30	22.30	22.30
Temple	ATM	20.62	20.62	20.62	20.62	20.62	20.62	20.62	20.62	20.62	22.30	22.30	22.30
Texarkana	CEA	30.54	30.54	30.54	30.54	30.54	30.54	30.54	30.54	30.54	30.54	30.54	30.54
Tyler	CEE	21.22	21.22	21.22	21.22	21.22	21.22	21.22	21.22	21.22	21.22	21.22	21.22
Waco	ATM	20.62	20.62	20.62	20.62	20.62	20.62	20.62	20.62	20.62	22.30	22.30	22.30
Wichita Falls	ATM	20.62	20.62	20.62	20.62	20.62	20.62	20.62	20.62	20.62	22.30	22.30	22.30
Average		21.18	21.18	21.18	21.29	21.29	21.36	21.48	21.50	21.50	22.03	22.03	22.03

Twenty Five Texas Cities Six MCF Residential Gas Bill Cost of Service



**TWENTY-FIVE TEXAS CITIES SIX MCF RESIDENTIAL GAS BILL
COST OF SERVICE**

YEAR	MAR	JUN	SEP	DEC
1995	13.32	12.85	12.89	13.28
1996	13.84	13.61	13.64	13.80
1997	14.14	13.90	13.90	14.18
1998	14.18	13.95	13.99	14.23
1999	14.23	13.99	14.00	14.24
2000	14.31	14.05	14.19	14.38
2001	14.30	14.14	14.18	14.81
2002	14.87	14.87	14.98	14.98
2003	15.82	15.82	15.82	15.82
2004	16.04	16.31	16.46	16.48
2005	16.54	16.54	16.60	16.60
2006	16.70	16.70	16.85	16.85
2007	17.68	17.92	17.88	18.09
2008	18.16	18.48	18.66	18.98
2009	17.60	17.93	19.85	20.04
2010	21.18	21.36	21.50	22.03