

**SIX MCF RESIDENTIAL GAS BILL ANALYSIS
FOR TWENTY-FIVE TEXAS CITIES**



GAS SERVICES DIVISION
January through December 2002

Introduction

Included within are five tables reflecting an analysis of a 6 Mcf gas bill for twenty-five Texas cities. These cities provide a geographic representation of the State.

Six Mcf reflects the approximate monthly average consumption of gas on an annual basis for the state, and is used in each table.

All other items such as penalties, taxes, applicable city fees, etc., normally included in a gross bill are excluded.

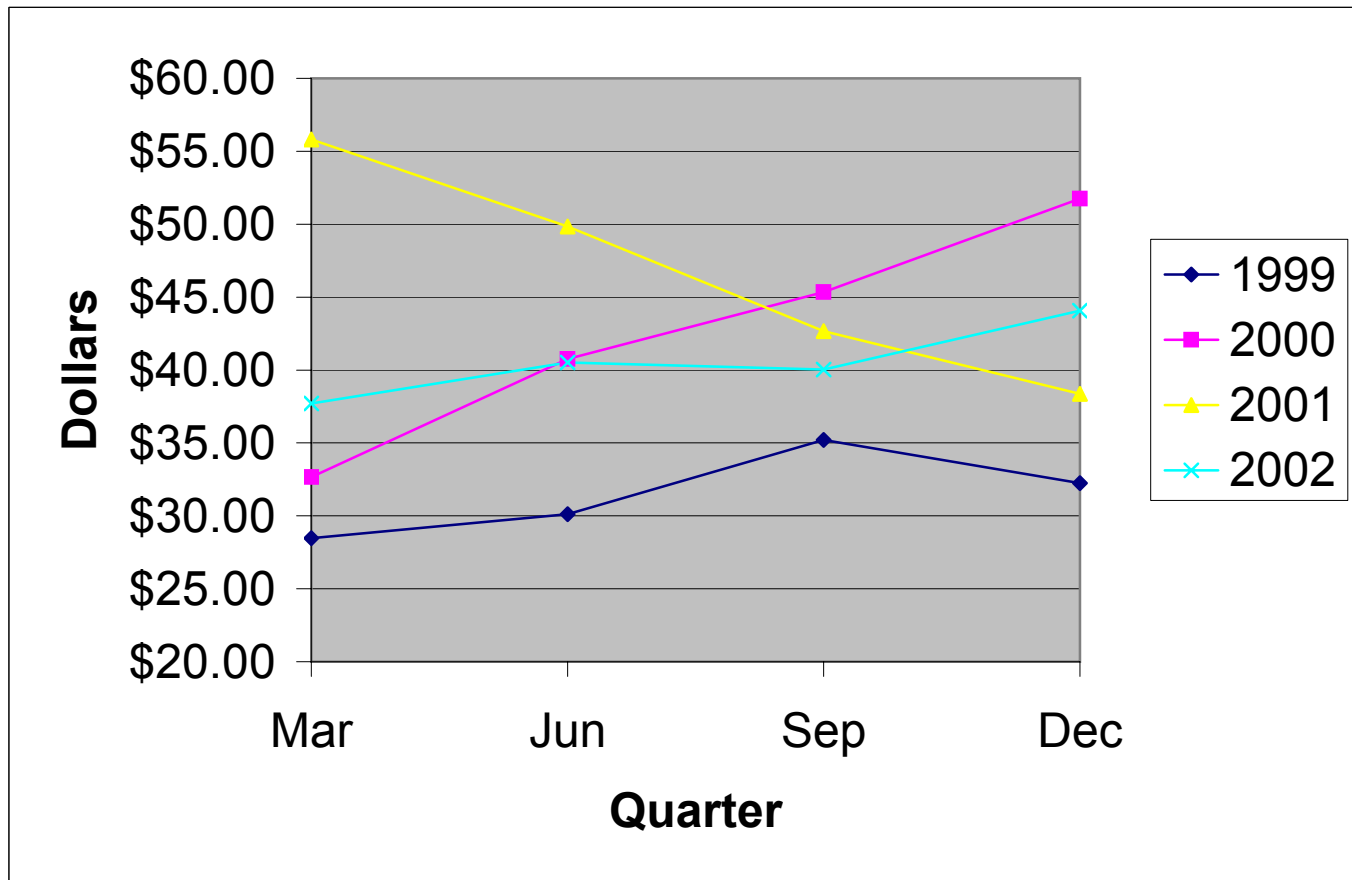
Table of Contents

Introduction	Page 1
Table 1 - Total Bill	Pages 2-3
Table 2 - Analysis of Gas Bill	Pages 4-5
Table 3 - Cost of Gas	Pages 6-7
Table 4 - Analysis of Cost of Gas	Pages 8-9
Table 5 - Cost of Service	Pages 10-11

**TABLE 1 - TWENTY FIVE TEXAS CITIES
SIX MCF RESIDENTIAL GAS BILL
TOTAL BILL
(Cost of Gas Plus Cost of Service)**

CITY	GAS CO.	JAN 02	FEB 02	MAR 02	APR 02	MAY 02	JUN 02	JUL 02	AUG 02	SEP 02	OCT 02	NOV 02	DEC 02
Abilene	TXU	33.47	49.09	47.52	45.69	51.08	51.08	38.86	50.30	50.30	52.29	53.78	53.78
Amarillo	ATM	30.37	27.73	29.06	32.21	31.86	32.38	31.74	30.82	32.28	32.78	35.09	33.85
Austin	TGS	47.08	46.80	47.37	48.98	48.33	49.50	42.41	41.92	44.37	42.47	46.81	46.03
Beaumont	CPE	52.61	44.88	44.88	44.88	44.88	44.88	44.88	44.13	44.13	44.13	47.53	47.53
Brownsville	TGS	40.40	40.13	40.69	42.30	41.29	41.77	41.34	40.32	42.71	40.37	44.30	44.92
Bryan	TXU	37.37	37.71	35.79	33.97	39.36	39.36	40.19	38.57	38.57	40.57	42.05	42.05
Corpus Christi	MUN	41.14	38.02	37.06	41.08	44.50	44.92	44.32	43.98	45.30	47.82	50.46	51.60
Dallas	TXU	33.32	33.32	31.45	29.68	34.92	34.92	52.92	51.30	51.30	53.30	54.78	54.78
El Paso	TGS	32.20	27.62	27.62	27.62	32.71	32.71	32.71	28.55	28.55	28.55	33.94	32.73
Fort Worth	TXU	36.51	36.51	34.60	32.79	38.14	38.14	38.97	37.36	37.36	39.37	40.84	40.84
Galveston	TGS	48.72	46.73	42.25	48.56	48.93	48.88	44.75	43.62	46.25	47.85	53.35	52.83
Houston	CPE	53.80	42.94	42.94	42.94	42.94	42.94	42.94	41.04	41.04	41.04	41.04	41.04
Laredo	CPE	43.54	43.07	43.07	43.07	43.07	43.07	43.07	37.67	37.67	37.67	41.34	41.34
Lubbock	ATM	33.01	29.11	29.83	34.69	33.19	33.67	32.65	30.73	32.71	34.09	38.53	37.87
McAllen	TGS	40.40	40.13	40.69	42.30	41.29	41.77	41.34	40.32	42.71	42.84	44.30	48.50
Midland	ATM	33.01	27.19	29.59	35.77	35.95	36.37	35.89	33.97	36.25	37.51	41.89	37.87
Odessa	ATM	32.83	29.17	30.97	36.85	35.95	34.03	34.33	35.05	36.31	36.97	42.61	43.99
San Angelo	TXU	20.88	37.66	36.08	34.26	39.65	39.65	40.48	38.86	38.86	40.86	42.34	42.34
San Antonio	MUN	37.07	35.09	33.32	38.47	39.01	38.83	39.73	36.53	37.13	35.80	45.24	46.21
Sherman	TXU	36.79	36.79	34.87	33.05	38.44	38.44	39.27	37.65	37.65	39.65	41.13	41.13
Temple	TXU	37.19	37.53	35.62	33.79	39.18	39.18	40.01	38.40	38.40	40.39	41.88	41.88
Texarkana	CPE	54.56	56.14	55.73	57.25	54.77	47.57	47.54	45.97	47.50	55.96	53.92	54.11
Tyler	CPE	49.75	42.26	42.26	42.26	42.26	42.26	42.26	36.67	36.67	36.67	40.41	40.41
Waco	TXU	40.23	40.23	38.31	36.49	41.88	41.88	42.71	41.09	41.09	43.09	44.57	44.57
Wichita Falls	TXU	33.10	33.10	31.18	29.36	34.75	34.75	35.58	18.88	35.84	37.84	39.32	39.32
Average		39.17	38.36	37.71	38.73	40.73	40.52	40.44	38.55	40.04	41.19	44.06	44.06

**TWENTY-FIVE TEXAS CITIES
SIX MCF RESIDENTIAL GAS BILL
TOTAL BILL**



**TABLE 2 - TWENTY FIVE TEXAS CITIES
SIX MCF RESIDENTIAL GAS BILL
ANALYSIS OF GAS BILL**

CITY	GAS CO.	Jan-02			Feb-02			Mar-02			Apr-02			May-02			Jun-02		
		A	B	C	A	B	C	A	B	C	A	B	C	A	B	C	A	B	C
Abilene	TXU	10.39	23.08	33.47	10.39	38.71	49.09	10.39	37.13	47.52	10.39	35.31	45.69	10.39	40.70	51.08	10.39	40.70	51.08
Amarillo	ATM	11.79	18.58	30.37	11.79	15.94	27.73	11.79	17.27	29.06	11.79	20.42	32.21	11.79	20.07	31.86	11.79	20.59	32.38
Austin	TGS	17.22	29.86	47.08	17.22	29.58	46.80	17.22	30.15	47.37	17.22	31.76	48.98	17.22	31.10	48.33	17.22	32.28	49.50
Beaumont	CPE	16.96	35.65	52.61	16.96	27.92	44.88	16.96	27.92	44.88	16.96	27.92	44.88	16.96	27.92	44.88	16.96	27.92	44.88
Brownsville	TGS	15.72	24.67	40.40	15.72	24.41	40.13	15.72	24.96	40.69	15.72	26.58	42.30	15.72	25.57	41.29	15.72	26.04	41.77
Bryan	TXU	15.18	22.19	37.37	15.18	22.53	37.71	15.18	20.61	35.79	15.18	18.79	33.97	15.18	24.17	39.36	15.18	24.17	39.36
Corpus Christi	MUN	21.94	19.20	41.14	21.94	16.08	38.02	21.94	15.12	37.06	21.94	19.14	41.08	21.94	22.56	44.50	21.94	22.98	44.92
Dallas	TXU	11.39	21.93	33.32	11.39	21.93	33.32	11.39	20.06	31.45	11.39	18.29	29.68	11.39	23.53	34.92	11.39	23.53	34.92
El Paso	TGS	9.10	23.10	32.20	9.10	18.52	27.62	9.10	18.52	27.62	9.10	18.52	27.62	9.10	23.61	32.71	9.10	23.61	32.71
Fort Worth	TXU	14.46	22.05	36.51	14.46	22.05	36.51	14.46	20.14	34.60	14.46	18.33	32.79	14.46	23.68	38.14	14.46	23.68	38.14
Galveston	TGS	16.98	31.74	48.72	16.98	29.74	46.73	16.98	25.27	42.25	16.98	31.57	48.56	16.98	31.95	48.93	16.98	31.90	48.88
Houston	CPE	13.38	40.42	53.80	13.38	29.56	42.94	13.38	29.56	42.94	13.38	29.56	42.94	13.38	29.56	42.94	13.38	29.56	42.94
Laredo	CPE	16.85	26.70	43.54	16.85	26.23	43.07	16.85	26.23	43.07	16.85	26.23	43.07	16.85	26.23	43.07	16.85	26.23	43.07
Lubbock	ATM	13.99	19.02	33.01	13.99	15.12	29.11	13.99	15.84	29.83	13.99	20.70	34.69	13.99	19.20	33.19	13.99	19.68	33.67
McAllen	TGS	15.72	24.67	40.40	15.72	24.41	40.13	15.72	24.96	40.69	15.72	26.58	42.30	15.72	25.57	41.29	15.72	26.04	41.77
Midland	ATM	13.99	19.02	33.01	13.99	13.20	27.19	13.99	15.60	29.59	13.99	21.78	35.77	13.99	21.96	35.95	13.99	22.38	36.37
Odessa	ATM	13.99	18.84	32.83	13.99	15.18	29.17	13.99	16.98	30.97	13.99	22.86	36.85	13.99	21.96	35.95	13.99	20.04	34.03
San Angelo	TXU	15.47	5.41	20.88	15.47	22.19	37.66	15.47	20.61	36.08	15.47	18.79	34.26	15.47	24.17	39.65	15.47	24.17	39.65
San Antonio	MUN	16.93	20.14	37.07	16.93	18.16	35.09	16.93	16.39	33.32	16.93	21.54	38.47	16.93	22.08	39.01	16.93	21.90	38.83
Sherman	TXU	14.26	22.53	36.79	14.26	22.53	36.79	14.26	20.61	34.87	14.26	18.79	33.05	14.26	24.17	38.44	14.26	24.17	38.44
Temple	TXU	15.01	22.19	37.19	15.01	22.53	37.53	15.01	20.61	35.62	15.01	18.79	33.79	15.01	24.17	39.18	15.01	24.17	39.18
Texarkana	CPE	16.08	38.47	54.56	16.08	40.06	56.14	16.08	39.64	55.73	16.08	41.17	57.25	16.08	38.68	54.77	16.08	31.48	47.57
Tyler	CPE	16.29	33.46	49.75	16.29	25.97	42.26	16.29	25.97	42.26	16.29	25.97	42.26	16.29	25.97	42.26	16.29	25.97	42.26
Waco	TXU	17.70	22.53	40.23	17.70	22.53	40.23	17.70	20.61	38.31	17.70	18.79	36.49	17.70	24.17	41.88	17.70	24.17	41.88
Wichita Falls	TXU	11.02	22.08	33.10	11.02	22.08	33.10	11.02	20.16	31.18	11.02	18.34	29.36	11.02	23.73	34.75	11.02	23.73	34.75
Average		14.87	24.30	39.17	14.87	23.49	38.36	14.87	22.84	37.71	14.87	23.86	38.73	14.87	25.86	40.73	14.87	25.64	40.52

A-COST OF SERVICE (EXCLUDING COST OF GAS)

B-COST OF GAS (INCLUDES COST OF GAS IN BASE PLUS COST OF GAS ADJUSTMENT)

C-TOTAL BILL (TOTAL COST OF GAS PLUS COST OF SERVICE)

**TABLE 2 - TWENTY FIVE TEXAS CITIES
SIX MCF RESIDENTIAL GAS BILL
ANALYSIS OF GAS BILL**

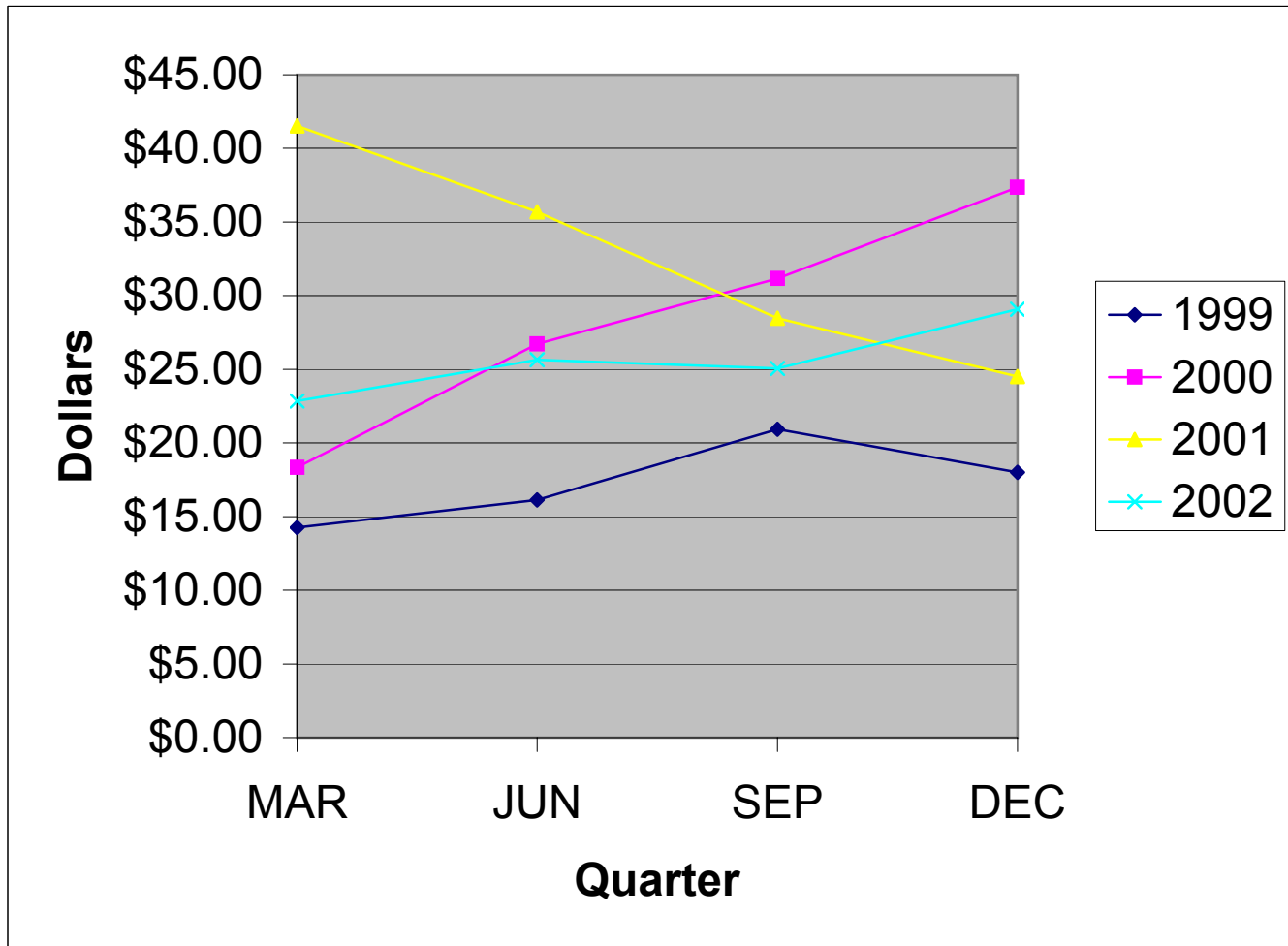
Jul-02			Aug-02			Sep-02			Oct-02			Nov-02			Dec-02			GAS CO. CITY	
A	B	C	A	B	C	A	B	C	A	B	C	A	B	C	A	B	C		
13.85	25.00	38.86	10.39	39.91	50.30	10.39	39.91	50.30	10.39	41.91	52.29	10.39	43.39	53.78	10.39	43.39	53.78	TXU	Abilene
11.79	19.95	31.74	11.79	19.03	30.82	11.79	20.49	32.28	11.79	20.99	32.78	11.79	23.30	35.09	11.79	22.06	33.85	ATM	Amarillo
17.22	25.19	42.41	17.22	24.69	41.92	17.22	27.15	44.37	17.22	25.25	42.47	17.22	29.59	46.81	17.22	28.81	46.03	TGS	Austin
16.96	27.92	44.88	16.96	27.16	44.13	16.96	27.16	44.13	16.96	27.16	44.13	16.96	30.56	47.53	16.96	30.56	47.53	CPE	Beaumont
15.72	25.62	41.34	15.72	24.59	40.32	15.72	26.99	42.71	15.72	24.64	40.37	15.72	28.58	44.30	15.72	29.20	44.92	TGS	Brownsville
15.18	25.00	40.19	15.18	23.39	38.57	15.18	23.39	38.57	15.18	25.39	40.57	15.18	26.87	42.05	15.18	26.87	42.05	TXU	Bryan
21.94	22.38	44.32	23.04	20.94	43.98	23.04	22.26	45.30	23.04	24.78	47.82	23.04	27.42	50.46	23.04	28.56	51.60	MUN	Corpus Christi
11.39	41.52	52.92	11.39	39.91	51.30	11.39	39.91	51.30	11.39	41.91	53.30	11.39	43.39	54.78	11.39	43.39	54.78	TXU	Dallas
9.10	23.61	32.71	9.10	19.45	28.55	9.10	19.45	28.55	9.10	19.45	28.55	9.10	24.84	33.94	9.10	23.63	32.73	TGS	El Paso
14.46	24.51	38.97	14.46	22.90	37.36	14.46	22.90	37.36	14.46	24.91	39.37	14.46	26.38	40.84	14.46	26.38	40.84	TXU	Fort Worth
16.98	27.77	44.75	16.98	26.63	43.62	16.98	29.27	46.25	16.98	30.86	47.85	16.98	36.37	53.35	16.98	35.85	52.83	TGS	Galveston
13.38	29.56	42.94	13.38	27.66	41.04	13.38	27.66	41.04	13.38	27.66	41.04	13.38	27.66	41.04	13.38	27.66	41.04	CPE	Houston
16.85	26.23	43.07	16.85	20.82	37.67	16.85	20.82	37.67	16.85	20.82	37.67	16.85	24.50	41.34	16.85	24.50	41.34	CPE	Laredo
13.99	18.66	32.65	13.99	16.74	30.73	13.99	18.72	32.71	13.99	20.10	34.09	13.99	24.54	38.53	13.99	23.88	37.87	ATM	Lubbock
15.72	25.62	41.34	15.72	24.59	40.32	15.72	26.99	42.71	15.72	27.11	42.84	15.72	28.58	44.30	15.72	32.78	48.50	TGS	McAllen
13.99	21.90	35.89	13.99	19.98	33.97	13.99	22.26	36.25	13.99	23.52	37.51	13.99	27.90	41.89	13.99	23.88	37.87	ATM	Midland
13.99	20.34	34.33	13.99	21.06	35.05	13.99	22.32	36.31	13.99	22.98	36.97	13.99	28.62	42.61	13.99	30.00	43.99	ATM	Odessa
15.47	25.00	40.48	15.47	23.39	38.86	15.47	23.39	38.86	15.47	25.39	40.86	15.47	26.87	42.34	15.47	26.87	42.34	TXU	San Angelo
16.93	22.80	39.73	16.93	19.60	36.53	16.93	20.20	37.13	16.93	18.87	35.80	16.93	28.31	45.24	16.93	29.28	46.21	MUN	San Antonio
14.26	25.00	39.27	14.26	23.39	37.65	14.26	23.39	37.65	14.26	25.39	39.65	14.26	26.87	41.13	14.26	26.87	41.13	TXU	Sherman
15.01	25.00	40.01	15.01	23.39	38.40	15.01	23.39	38.40	15.01	25.39	40.39	15.01	26.87	41.88	15.01	26.87	41.88	TXU	Temple
16.08	31.46	47.54	16.13	29.83	45.97	16.13	31.37	47.50	16.13	39.82	55.96	16.13	37.79	53.92	16.13	37.97	54.11	CPE	Texarkana
16.29	25.97	42.26	16.29	20.38	36.67	16.29	20.38	36.67	16.29	20.38	36.67	16.29	24.12	40.41	16.29	24.12	40.41	CPE	Tyler
17.70	25.00	42.71	17.70	23.39	41.09	17.70	23.39	41.09	17.70	25.39	43.09	17.70	26.87	44.57	17.70	26.87	44.57	TXU	Waco
11.02	24.56	35.58	12.45	6.43	18.88	12.45	23.39	35.84	12.45	25.39	37.84	12.45	26.87	39.32	12.45	26.87	39.32	TXU	Wichita Falls
15.01	25.42	40.44	14.98	23.57	38.55	14.98	25.06	40.04	14.98	26.22	41.19	14.98	29.08	44.06	14.98	29.08	44.06		Average

**TABLE 3 - TWENTY FIVE TEXAS CITIES
SIX MCF RESIDENTIAL GAS BILL
***COST OF GAS
(EXCLUDING COST OF SERVICE)**

CITY	GAS CO.	Jan-02	Feb-02	Mar-02	Apr-02	May-02	Jun-02	Jul-02	Aug-02	Sep-02	Oct-02	Nov-02	Dec-02
Abilene	TXU	23.08	38.71	37.13	35.31	40.70	40.70	25.00	39.91	39.91	41.91	43.39	43.39
Amarillo	ATM	18.58	15.94	17.27	20.42	20.07	20.59	19.95	19.03	20.49	20.99	23.30	22.06
Austin	TGS	29.86	29.58	30.15	31.76	31.10	32.28	25.19	24.69	27.15	25.25	29.59	28.81
Beaumont	CPE	35.65	27.92	27.92	27.92	27.92	27.92	27.92	27.16	27.16	27.16	30.56	30.56
Brownsville	TGS	24.67	24.41	24.96	26.58	25.57	26.04	25.62	24.59	26.99	24.64	28.58	29.20
Bryan	TXU	22.19	22.53	20.61	18.79	24.17	24.17	25.00	23.39	23.39	25.39	26.87	26.87
Corpus Christi	MUN	19.20	16.08	15.12	19.14	22.56	22.98	22.38	20.94	22.26	24.78	27.42	28.56
Dallas	TXU	21.93	21.93	20.06	18.29	23.53	23.53	41.52	39.91	39.91	41.91	43.39	43.39
El Paso	TGS	23.10	18.52	18.52	18.52	23.61	23.61	23.61	19.45	19.45	19.45	24.84	23.63
Fort Worth	TXU	22.05	22.05	20.14	18.33	23.68	23.68	24.51	22.90	22.90	24.91	26.38	26.38
Galveston	TGS	31.74	29.74	25.27	31.57	31.95	31.90	27.77	26.63	29.27	30.86	36.37	35.85
Houston	CPE	40.42	29.56	29.56	29.56	29.56	29.56	29.56	27.66	27.66	27.66	27.66	27.66
Laredo	CPE	26.70	26.23	26.23	26.23	26.23	26.23	26.23	20.82	20.82	20.82	24.50	24.50
Lubbock	ATM	19.02	15.12	15.84	20.70	19.20	19.68	18.66	16.74	18.72	20.10	24.54	23.88
McAllen	TGS	24.67	24.41	24.96	26.58	25.57	26.04	25.62	24.59	26.99	27.11	28.58	32.78
Midland	ATM	19.02	13.20	15.60	21.78	21.96	22.38	21.90	19.98	22.26	23.52	27.90	23.88
Odessa	ATM	18.84	15.18	16.98	22.86	21.96	20.04	20.34	21.06	22.32	22.98	28.62	30.00
San Angelo	TXU	5.41	22.19	20.61	18.79	24.17	24.17	25.00	23.39	23.39	25.39	26.87	26.87
San Antonio	MUN	20.14	18.16	16.39	21.54	22.08	21.90	22.80	19.60	20.20	18.87	28.31	29.28
Sherman	TXU	22.53	22.53	20.61	18.79	24.17	24.17	25.00	23.39	23.39	25.39	26.87	26.87
Temple	TXU	22.19	22.53	20.61	18.79	24.17	24.17	25.00	23.39	23.39	25.39	26.87	26.87
Texarkana	CPE	38.47	40.06	39.64	41.17	38.68	31.48	31.46	29.83	31.37	39.82	37.79	37.97
Tyler	CPE	33.46	25.97	25.97	25.97	25.97	25.97	25.97	20.38	20.38	20.38	24.12	24.12
Waco	TXU	22.53	22.53	20.61	18.79	24.17	24.17	25.00	23.39	23.39	25.39	26.87	26.87
Wichita Falls	TXU	22.08	22.08	20.16	18.34	23.73	23.73	24.56	6.43	23.39	25.39	26.87	26.87
Average		24.30	23.49	22.84	23.86	25.86	25.64	25.42	23.57	25.06	26.22	29.08	29.08

***INCLUDES COST OF GAS IN BASE RATE PLUS COST OF GAS ADJUSTMENT.

**TWENTY-FIVE TEXAS CITIES
SIX MCF RESIDENTIAL GAS BILL
COST OF GAS**



**TABLE 4 - TWENTY FIVE TEXAS CITIES
SIX MCF RESIDENTIAL GAS BILL
ANALYSIS OF COST OF GAS**

CITY	GAS CO.	Jan-02			Feb-02			Mar-02			Apr-02			May-02			Jun-02		
		A	B	C	A	B	C	A	B	C	A	B	C	A	B	C	A	B	C
Abilene	TXU	16.52	6.56	23.08	16.52	22.19	38.71	16.52	20.61	37.13	16.52	18.79	35.31	16.521	24.17	40.70	16.521	24.17	40.70
Amarillo	ATM	0.00	18.58	18.58	0.00	15.94	15.94	0.00	17.27	17.27	0.00	20.42	20.42	0	20.07	20.07	0	20.59	20.59
Austin	TGS	0.00	29.86	29.86	0.00	29.58	29.58	0.00	30.15	30.15	0.00	31.76	31.76	0	31.10	31.10	0	32.28	32.28
Beaumont	CPE	20.40	15.25	35.65	20.40	7.52	27.92	20.40	7.52	27.92	20.40	7.52	27.92	20.40	7.52	27.92	20.40	7.52	27.92
Brownsville	TGS	0.00	24.67	24.67	0.00	24.41	24.41	0.00	24.96	24.96	0.00	26.58	26.58	0.00	25.57	25.57	0.00	26.04	26.04
Bryan	TXU	0.00	22.19	22.19	0.00	22.53	22.53	0.00	20.61	20.61	0.00	18.79	18.79	0	24.17	24.17	0	24.17	24.17
Corpus Christi	MUN	0.00	19.20	19.20	0.00	16.08	16.08	0.00	15.12	15.12	0.00	19.14	19.14	0	22.56	22.56	0	22.98	22.98
Dallas	TXU	16.52	5.41	21.93	16.52	5.41	21.93	16.52	3.54	20.06	16.52	1.77	18.29	16.521	7.01	23.53	16.521	7.01	23.53
El Paso	TGS	0.00	23.10	23.10	0.00	18.52	18.52	0.00	18.52	18.52	0.00	18.52	18.52	0	23.61	23.61	0	23.61	23.61
Fort Worth	TXU	16.52	5.52	22.05	16.52	5.52	22.05	16.52	3.62	20.14	16.52	1.81	18.33	16.521	7.16	23.68	16.521	7.16	23.68
Galveston	TGS	0.00	31.74	31.74	0.00	29.74	29.74	0.00	25.27	25.27	0.00	31.57	31.57	0	31.95	31.95	0	31.90	31.90
Houston	CPE	15.43	24.99	40.42	15.43	14.13	29.56	15.43	14.13	29.56	15.43	14.13	29.56	15.43	14.13	29.56	15.43	14.13	29.56
Laredo	CPE	18.87	7.82	26.70	18.87	7.35	26.23	18.87	7.35	26.23	18.87	7.35	26.23	18.87	7.35	26.23	18.87	7.35	26.23
Lubbock	ATM	0.00	19.02	19.02	0.00	15.12	15.12	0.00	15.84	15.84	0.00	20.70	20.70	0	19.20	19.20	0	19.68	19.68
McAllen	TGS	0.00	24.67	24.67	0.00	24.41	24.41	0.00	24.96	24.96	0.00	26.58	26.58	0.00	25.57	25.57	0.00	26.04	26.04
Midland	ATM	0.00	19.02	19.02	0.00	13.20	13.20	0.00	15.60	15.60	0.00	21.78	21.78	0	21.96	21.96	0	22.38	22.38
Odessa	ATM	0.00	18.84	18.84	0.00	15.18	15.18	0.00	16.98	16.98	0.00	22.86	22.86	0	21.96	21.96	0	20.04	20.04
San Angelo	TXU	0.00	5.41	5.41	0.00	22.19	22.19	0.00	20.61	20.61	0.00	18.79	18.79	0	24.17	24.17	0	24.17	24.17
San Antonio	MUN	13.20	6.94	20.14	13.20	4.96	18.16	13.20	3.19	16.39	13.20	8.34	21.54	13.20	8.88	22.08	13.20	8.70	21.90
Sherman	TXU	0.00	22.53	22.53	0.00	22.53	22.53	0.00	20.61	20.61	0.00	18.79	18.79	0	24.17	24.17	0	24.17	24.17
Temple	TXU	0.00	22.19	22.19	0.00	22.53	22.53	0.00	20.61	20.61	0.00	18.79	18.79	0	24.17	24.17	0	24.17	24.17
Texarkana	CPE	0.00	38.47	38.47	0.00	40.06	40.06	0.00	39.64	39.64	0.00	41.17	41.17	0	38.68	38.68	0	31.48	31.48
Tyler	CPE	19.65	13.81	33.46	19.65	6.32	25.97	19.65	6.32	25.97	19.65	6.32	25.97	19.65	6.32	25.97	19.65	6.32	25.97
Waco	TXU	0.00	22.53	22.53	0.00	22.53	22.53	0.00	20.61	20.61	0.00	18.79	18.79	0	24.17	24.17	0	24.17	24.17
Wichita Falls	TXU	16.52	5.56	22.08	16.52	5.56	22.08	16.52	3.64	20.16	16.52	1.82	18.34	16.521	7.21	23.73	16.521	7.21	23.73
Average		6.15	18.15	24.30	6.15	17.34	23.49	6.15	16.69	22.84	6.15	17.71	23.86	6.15	19.71	25.86	6.15	19.50	25.64

A-COST OF GAS INCLUDED IN BASE RATE

B-COST OF GAS ADJUSTMENT

C-TOTAL COST OF GAS

**TABLE 4 - TWENTY FIVE TEXAS CITIES
SIX MCF RESIDENTIAL GAS BILL
ANALYSIS OF COST OF GAS**

Jul-02			Aug-02			Sep-02			Oct-02			Nov-02			Dec-02			GAS CO.	CITY
A	B	C	A	B	C	A	B	C	A	B	C	A	B	C	A	B	C		
0.00	25.00	25.00	16.52	23.39	39.91	16.52	23.3898	39.91	16.52	25.39	41.91	16.52	26.87	43.39	16.52	26.87	43.39	TXU	Abilene
0.00	19.95	19.95	0.00	19.03	19.03	0.00	20.4888	20.49	0.00	20.99	20.99	0.00	23.30	23.30	0.00	22.06	22.06	ATM	Amarillo
0.00	25.19	25.19	0.00	24.69	24.69	0.00	27.1464	27.15	0.00	25.25	25.25	0.00	29.59	29.59	0.00	28.81	28.81	TGS	Austin
20.40	7.52	27.92	20.40	6.76	27.16	20.40	6.7614	27.16	20.40	6.76	27.16	20.40	10.16	30.56	20.40	10.16	30.56	CPE	Beaumont
0.00	25.62	25.62		24.59	24.59	0.00	26.9862	26.99	0.00	24.64	24.64	0.00	28.58	28.58	0.00	29.20	29.20	TGS	Brownsville
0.00	25.00	25.00	0.00	23.39	23.39	0.00	23.3898	23.39	0.00	25.39	25.39	0.00	26.87	26.87	0.00	26.87	26.87	TXU	Bryan
0.00	22.38	22.38	0.00	20.94	20.94	0.00	22.26	22.26	0.00	24.78	24.78	0.00	27.42	27.42	0.00	28.56	28.56	MUN	Corpus Christi
16.52	25.00	41.52	16.52	23.39	39.91	16.52	23.3898	39.91	16.52	25.39	41.91	16.52	26.87	43.39	16.52	26.87	43.39	TXU	Dallas
0.00	23.61	23.61	0.00	19.45	19.45	0.00	19.4496	19.45	0.00	19.45	19.45	0.00	24.84	24.84	0.00	23.63	23.63	TGS	El Paso
16.52	7.99	24.51	16.52	6.38	22.90	16.52	6.3822	22.90	16.52	8.38	24.91	16.52	9.86	26.38	16.52	9.86	26.38	TXU	Fort Worth
0.00	27.77	27.77	0.00	26.63	26.63	0.00	29.2698	29.27	0.00	30.86	30.86	0.00	36.37	36.37	0.00	35.85	35.85	TGS	Galveston
15.43	14.13	29.56	15.43	12.23	27.66	15.43	12.231	27.66	15.43	12.23	27.66	15.43	12.23	27.66	15.43	12.23	27.66	CPE	Houston
18.87	7.35	26.23	18.87	1.95	20.82	18.87	1.9488	20.82	18.87	1.95	20.82	18.87	5.62	24.50	18.87	5.62	24.50	CPE	Laredo
0.00	18.66	18.66	0.00	16.74	16.74	0.00	18.72	18.72	0.00	20.10	20.10	0.00	24.54	24.54	0.00	23.88	23.88	ATM	Lubbock
0.00	25.62	25.62		24.59	24.59	0.00	26.9862	26.99	0.00	27.11	27.11	0.00	28.58	28.58	0.00	32.78	32.78	TGS	McAllen
0.00	21.90	21.90	0.00	19.98	19.98	0.00	22.26	22.26	0.00	23.52	23.52	0.00	27.90	27.90	0.00	23.88	23.88	ATM	Midland
0.00	20.34	20.34	0.00	21.06	21.06	0.00	22.32	22.32	0.00	22.98	22.98	0.00	28.62	28.62	0.00	30.00	30.00	ATM	Odessa
0.00	25.00	25.00		23.39	23.39	0.00	23.3898	23.39	0.00	25.39	25.39	0.00	26.87	26.87	0.00	26.87	26.87	TXU	San Angelo
13.20	9.60	22.80	13.20	6.40	19.60	13.20	6.9978	20.20	13.20	5.67	18.87	13.20	15.11	28.31	13.20	16.08	29.28	MUN	San Antonio
0.00	25.00	25.00	0.00	23.39	23.39	0.00	23.3898	23.39	0.00	25.39	25.39	0.00	26.87	26.87	0.00	26.87	26.87	TXU	Sherman
0.00	25.00	25.00	0.00	23.39	23.39	0.00	23.3898	23.39	0.00	25.39	25.39	0.00	26.87	26.87	0.00	26.87	26.87	TXU	Temple
0.00	31.46	31.46	0.00	29.83	29.83	0.00	31.368	31.37	0.00	39.82	39.82	0.00	37.79	37.79	0.00	37.97	37.97	CPE	Texarkana
19.65	6.32	25.97	19.65	0.73	20.38	19.65	0.7344	20.38	19.65	0.73	20.38	19.65	4.47	24.12	19.65	4.47	24.12	CPE	Tyler
0.00	25.00	25.00	0.00	23.39	23.39	0.00	23.3898	23.39	0.00	25.39	25.39	0.00	26.87	26.87	0.00	26.87	26.87	TXU	Waco
16.52	8.04	24.56	0.00	6.43	6.43	0.00	23.3898	23.39	0.00	25.39	25.39	0.00	26.87	26.87	0.00	26.87	26.87	TXU	Wichita Falls
5.48	19.94	25.42	5.48	18.09	23.57	5.48	19.58	25.06	5.48	20.73	26.22	5.48	23.60	29.08	5.48	23.60	29.08		Average

**TABLE 5 - TWENTY FIVE TEXAS CITIES
SIX MCF RESIDENTIAL GAS BILL
COST OF SERVICE
(EXCLUDING COST OF GAS)**

CITY	GAS CO.	Jan-02	Feb-02	Mar-02	Apr-02	May-02	Jun-02	Jul-02	Aug-02	Sep-02	Oct-02	Nov-02	Dec-02
Abilene	TXU	10.39	10.39	10.39	10.39	10.39	10.39	13.85	10.39	10.39	10.39	10.39	10.39
Amarillo	ATM	11.79	11.79	11.79	11.79	11.79	11.79	11.79	11.79	11.79	11.79	11.79	11.79
Austin	TGS	17.22	17.22	17.22	17.22	17.22	17.22	17.22	17.22	17.22	17.22	17.22	17.22
Beaumont	CPE	16.96	16.96	16.96	16.96	16.96	16.96	16.96	16.96	16.96	16.96	16.96	16.96
Brownsville	TGS	15.72	15.72	15.72	15.72	15.72	15.72	15.72	15.72	15.72	15.72	15.72	15.72
Bryan	TXU	15.18	15.18	15.18	15.18	15.18	15.18	15.18	15.18	15.18	15.18	15.18	15.18
Corpus Christi	MUN	21.94	21.94	21.94	21.94	21.94	21.94	21.94	23.04	23.04	23.04	23.04	23.04
Dallas	TXU	11.39	11.39	11.39	11.39	11.39	11.39	11.39	11.39	11.39	11.39	11.39	11.39
El Paso	TGS	9.10	9.10	9.10	9.10	9.10	9.10	9.10	9.10	9.10	9.10	9.10	9.10
Fort Worth	TXU	14.46	14.46	14.46	14.46	14.46	14.46	14.46	14.46	14.46	14.46	14.46	14.46
Galveston	TGS	16.98	16.98	16.98	16.98	16.98	16.98	16.98	16.98	16.98	16.98	16.98	16.98
Houston	CPE	13.38	13.38	13.38	13.38	13.38	13.38	13.38	13.38	13.38	13.38	13.38	13.38
Laredo	CPE	16.85	16.85	16.85	16.85	16.85	16.85	16.85	16.85	16.85	16.85	16.85	16.85
Lubbock	ATM	13.99	13.99	13.99	13.99	13.99	13.99	13.99	13.99	13.99	13.99	13.99	13.99
McAllen	TGS	15.72	15.72	15.72	15.72	15.72	15.72	15.72	15.72	15.72	15.72	15.72	15.72
Midland	ATM	13.99	13.99	13.99	13.99	13.99	13.99	13.99	13.99	13.99	13.99	13.99	13.99
Odessa	ATM	13.99	13.99	13.99	13.99	13.99	13.99	13.99	13.99	13.99	13.99	13.99	13.99
San Angelo	TXU	15.47	15.47	15.47	15.47	15.47	15.47	15.47	15.47	15.47	15.47	15.47	15.47
San Antonio	MUN	16.93	16.93	16.93	16.93	16.93	16.93	16.93	16.93	16.93	16.93	16.93	16.93
Sherman	TXU	14.26	14.26	14.26	14.26	14.26	14.26	14.26	14.26	14.26	14.26	14.26	14.26
Temple	TXU	15.01	15.01	15.01	15.01	15.01	15.01	15.01	15.01	15.01	15.01	15.01	15.01
Texarkana	CPE	16.08	16.08	16.08	16.08	16.08	16.08	16.08	16.13	16.13	16.13	16.13	16.13
Tyler	CPE	16.29	16.29	16.29	16.29	16.29	16.29	16.29	16.29	16.29	16.29	16.29	16.29
Waco	TXU	17.70	17.70	17.70	17.70	17.70	17.70	17.70	17.70	17.70	17.70	17.70	17.70
Wichita Falls	TXU	11.02	11.02	11.02	11.02	11.02	11.02	11.02	12.45	12.45	12.45	12.45	12.45
Average		14.87	14.87	14.87	14.87	14.87	14.87	15.01	14.98	14.98	14.98	14.98	14.98

**TWENTY-FIVE TEXAS CITIES
SIX MCF RESIDENTIAL GAS BILL
COST OF SERVICE**

