

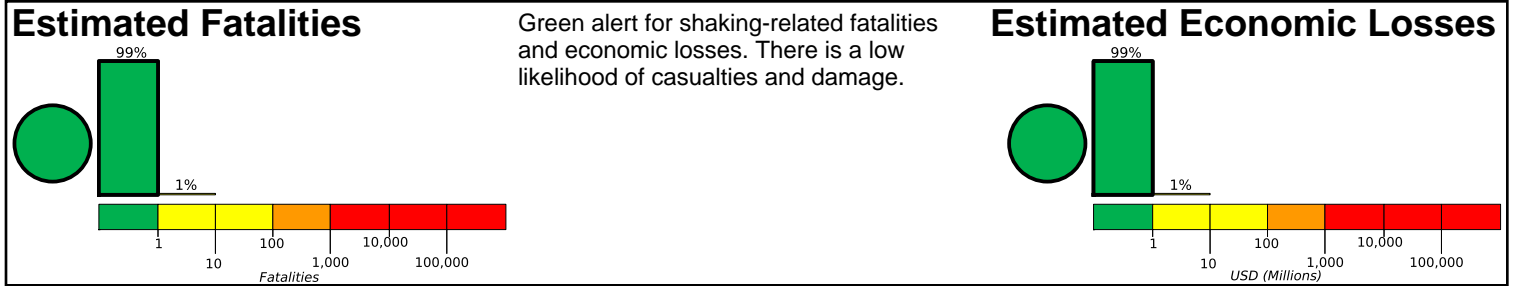
M 4.8, KANSAS

Origin Time: Wed 2014-11-12 21:40:00 UTC (15:40:00 local)

Location: 37.27°N 97.62°W Depth: 2 km

PAGER
Version 4

Created: 3 hours, 46 minutes after earthquake

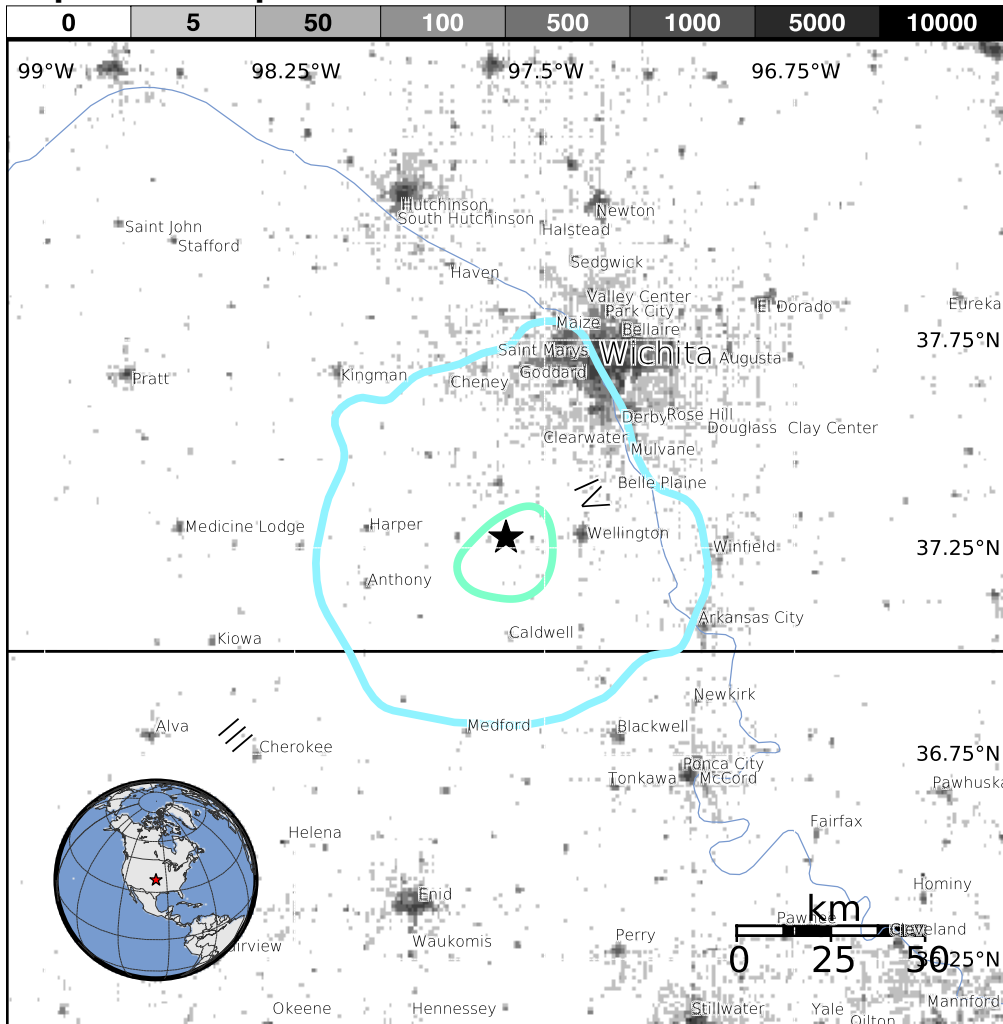


Estimated Population Exposed to Earthquake Shaking

ESTIMATED POPULATION EXPOSURE (k = x1000)		- -*	821k*	315k	1k	0	0	0	0	0
ESTIMATED MODIFIED MERCALLI INTENSITY		I	II-III	IV	V	VI	VII	VIII	IX	X+
PERCEIVED SHAKING		Not felt	Weak	Light	Moderate	Strong	Very Strong	Severe	Violent	Extreme
POTENTIAL DAMAGE	Resistant Structures	none	none	none	V. Light	Light	Moderate	Moderate/Heavy	Heavy	V. Heavy
	Vulnerable Structures	none	none	none	Light	Moderate	Moderate/Heavy	Heavy	V. Heavy	V. Heavy

*Estimated exposure only includes population within the map area.

Population Exposure



Structures:

Overall, the population in this region resides in structures that are resistant to earthquake shaking, though some vulnerable structures exist.

Historical Earthquakes (with MMI levels):

There were no earthquakes with significant population exposure to shaking within a 400 km radius of this event.

Selected City Exposure

from GeoNames.org

MMI	City	Population
IV	Wellington	8k
IV	Conway Springs	1k
IV	Caldwell	1k
IV	Clearwater	2k
IV	Harper	1k
IV	Oxford	1k
IV	Wichita	382k
III	Enid	49k
III	Stillwater	46k
III	Ponca City	25k
III	Hutchinson	42k

bold cities appear on map

(k = x1000)

PAGER content is automatically generated, and only considers losses due to structural damage. Limitations of input data, shaking estimates, and loss models may add uncertainty.

<http://earthquake.usgs.gov/pager>

Event ID: usc000swru