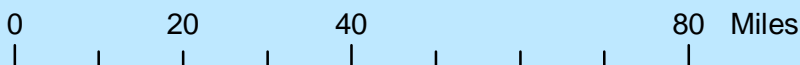
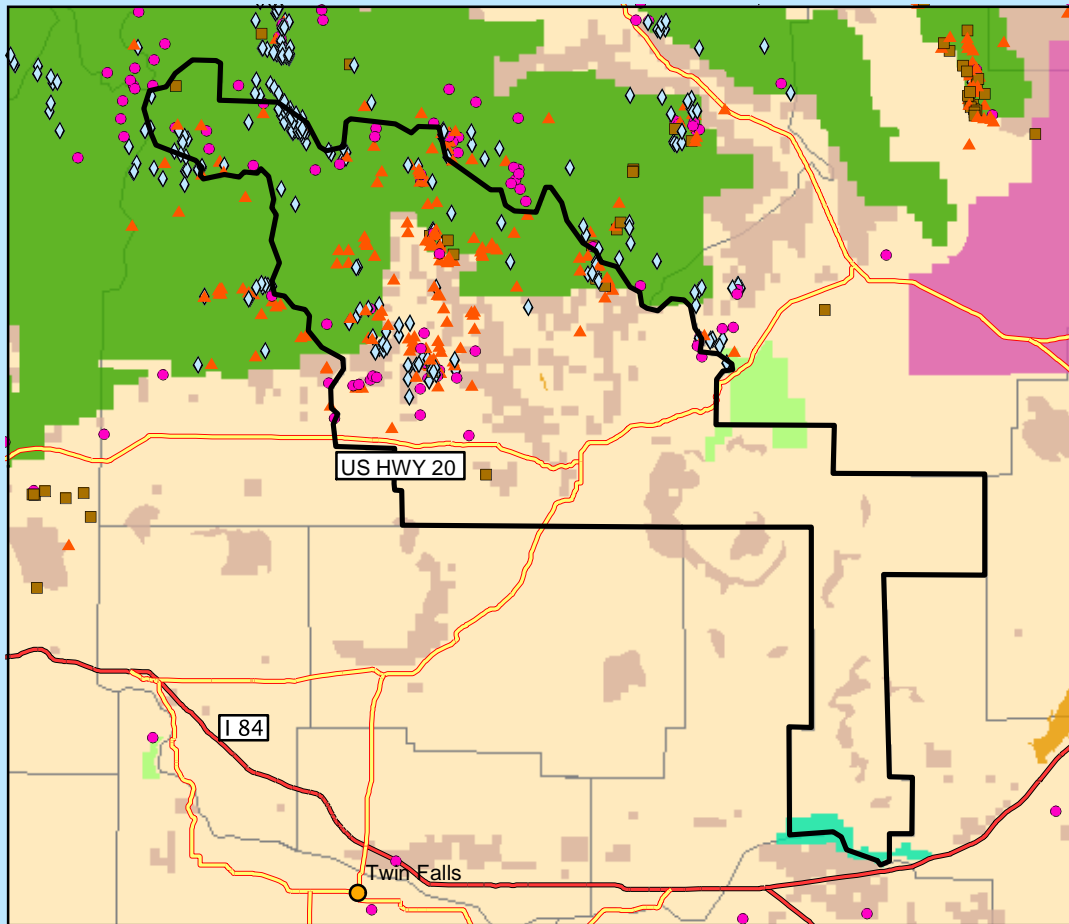


Abandoned Hardrock Mines and Waters Polluted by Metals

Blaine County, ID



1:1,439,682



Legend

- | | |
|---------------------------------|--------------------------------------|
| ● Cities | Federal Lands |
| ■ Impaired Water Areas | ■ Bureau of Indian Affairs |
| — Impaired Water Segments | ■ Bureau of Land Management |
| Abandoned Hardrock Mines | ■ Bureau of Reclamation |
| ● All Others | ■ Department of Defense |
| ■ Copper | ■ Forest Service |
| ▲ Lead | ■ Fish and Wildlife Service |
| ◇ Silver | ■ National Park Service |
| Road Classification | ■ Other Agencies (NASA, DOE, DOT...) |
| — Limited Access Highway | ■ Counties |
| — Highway | |

Impaired Water Segments and Impaired Water Areas data obtained from U.S. EPA Office of Water. Abandoned Hardrock Mines data obtained from U.S. Geological Survey's MASMILS database 2002 beta copy. All other layers obtained from ESRI.



A Project of the
Mineral Policy Center
Map by Ali Steimke
May 2002