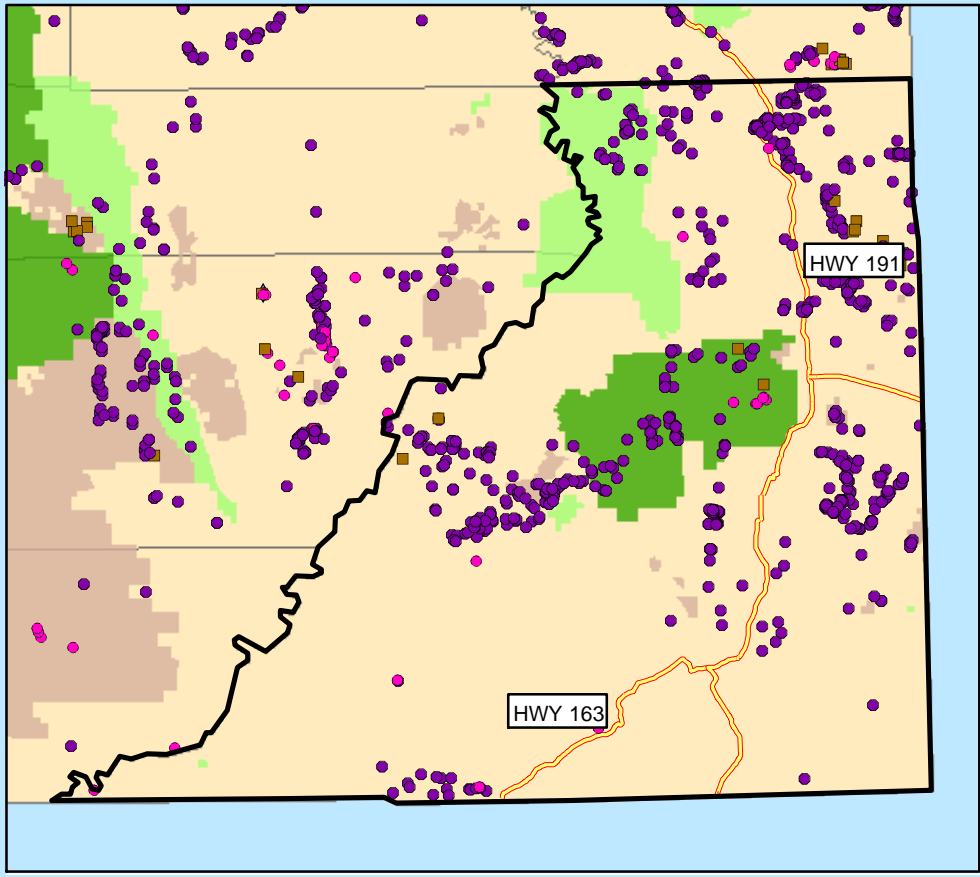
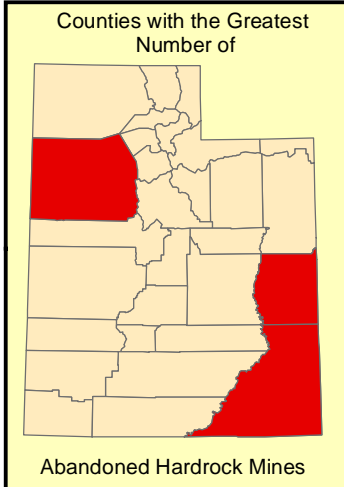


Abandoned Hardrock Mines and Waters Polluted by Metals

San Juan County, UT



1:1,770,036



Legend

| | |
|---------------------------------|------------------------------------|
| Impaired Water Areas | Federal Lands |
| Impaired Water Segments | Bureau of Indian Affairs |
| Abandoned Hardrock Mines | Bureau of Land Management |
| All Others | Bureau of Reclamation |
| Copper | Department of Defense |
| Lead | Forest Service |
| Silver | Fish and Wildlife Service |
| Uranium | National Park Service |
| Major Roads | Other Agencies (NASA, DOE, DOT...) |
| Limited Access Highway | Counties |
| Highway | Cities |

MINERAL POLICY CENTER

A Project of the Mineral Policy Center
 Map by Ali Steimke
 May 2002