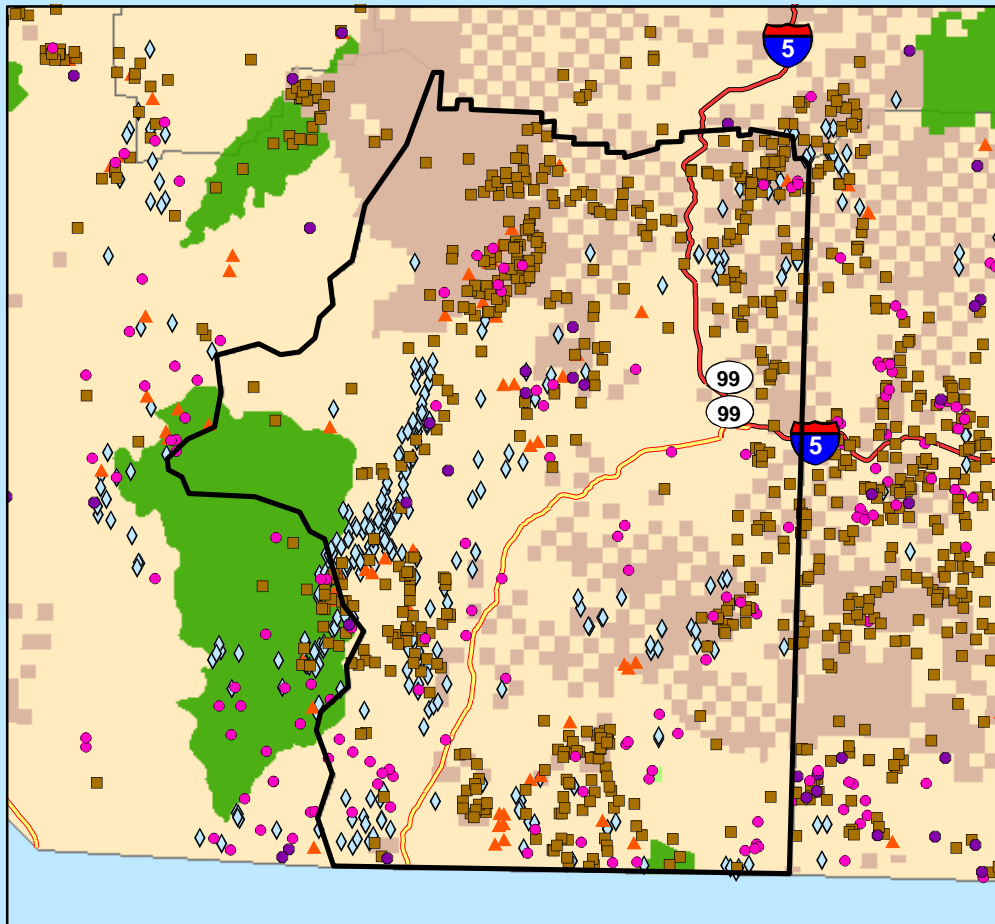


Abandoned Hardrock Mines and Waters Polluted by Metals

Josephine County, OR

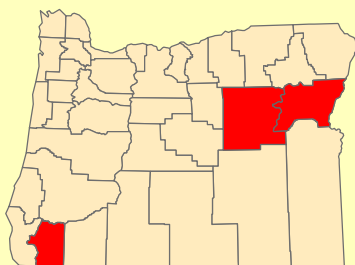


0 10 20 40 Miles

1:821,984



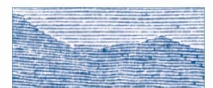
Counties with the Greatest Number of



Abandoned Hardrock Mines

Legend

- | | |
|---------------------------------|--------------------------------------|
| ● Cities | Federal Lands |
| ■ Impaired Water Areas | ■ Bureau of Indian Affairs |
| — Impaired Water Segments | ■ Bureau of Land Management |
| Abandoned Hardrock Mines | ■ Bureau of Reclamation |
| ● All Others | ■ Department of Defense |
| ◇ Chromium | ■ Forest Service |
| ▲ Copper | ■ Fish and Wildlife Service |
| ■ Gold | ■ National Park Service |
| ● Mercury | ■ Other Agencies (NASA, DOE, DOT...) |
| Road Classification | ■ Counties |
| — Limited Access Highway | |
| — Highway | |



MINERAL
POLICY
CENTER

A Project of the
Mineral Policy Center
Map by Ali Steimke
May 2002