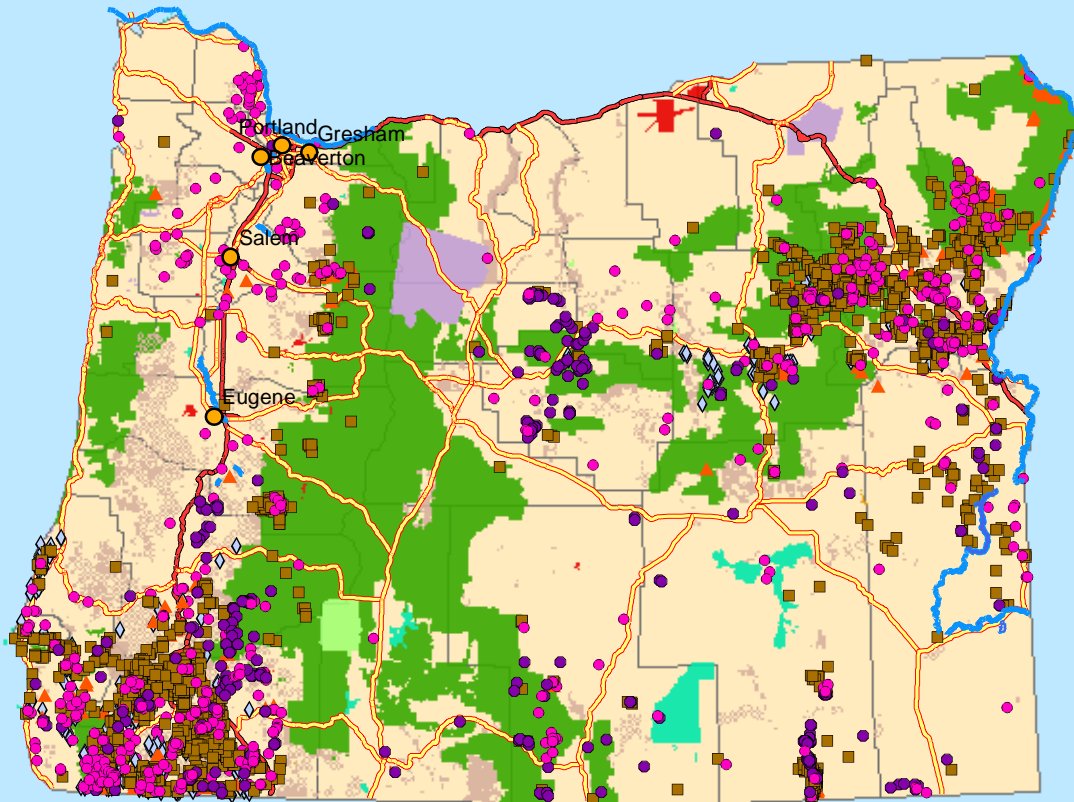


# Abandoned Hardrock Mines and Waters Polluted by Metals

## OREGON



0 65 130 260 Miles

1:4,560,846



### Legend

- |   |  |
|---|--|
| <ul style="list-style-type: none"> <li> Cities</li> <li> Impaired Water Areas</li> <li> Impaired Water Segments</li> </ul>  | <p><b>Federal Lands</b></p> <ul style="list-style-type: none"> <li> Bureau of Indian Affairs</li> <li> Bureau of Land Management</li> <li> Bureau of Reclamation</li> <li> Department of Defense</li> <li> Forest Service</li> <li> Fish and Wildlife Service</li> <li> National Park Service</li> <li> Other Agencies (NASA, DOE, DOT...)</li> <li> Counties</li> </ul> |
| <p><b>Abandoned Hardrock Mines</b></p> <ul style="list-style-type: none"> <li> All Others</li> <li> Chromium</li> <li> Copper</li> <li> Gold</li> <li> Mercury</li> </ul> | <p><b>Road Classification</b></p> <ul style="list-style-type: none"> <li> Limited Access Highway</li> <li> Highway</li> </ul>  |

Impaired Water Segments and Impaired Water Areas data obtained from U.S. EPA Office of Water. Abandoned Hardrock Mines data obtained from U.S. Geological Survey's MASMILS database 2002 beta copy. All other layers obtained from ESRI.



A Project of the  
Mineral Policy Center  
Map by Ali Steimke  
May 2002