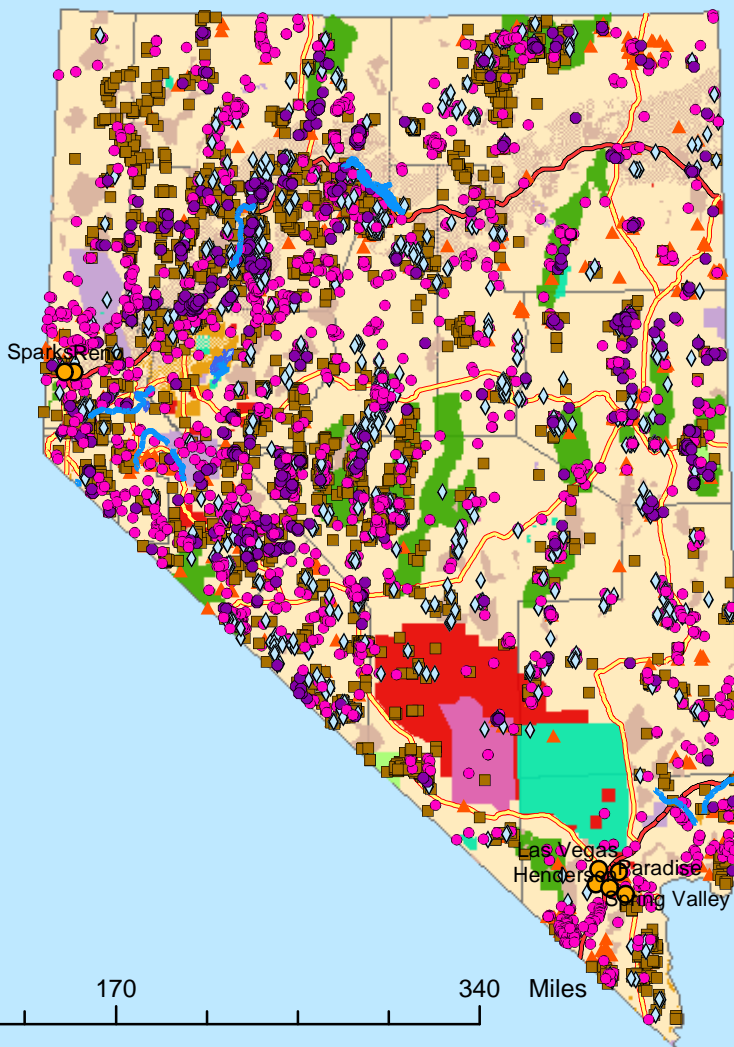


Abandoned Hardrock Mines and Waters Polluted by Metals

NEVADA



0 85 170 340 Miles

1:5,683,199



Legend

- | | |
|-----------------------------|------------------------------------|
| Cities | Federal Lands |
| Impaired Water Segments | Bureau of Indian Affairs |
| Impaired Water Areas | Bureau of Land Management |
| Abandoned Mine Lands | Bureau of Reclamation |
| All Others | Department of Defense |
| Copper | Forest Service |
| Gold | Fish and Wildlife Service |
| Silver | National Park Service |
| Tungsten | Other Agencies (NASA, DOE, DOT...) |
| Road Classification | Counties |
| Limited Access Highway | |
| Highway | |

Impaired Water Segments and Impaired Water Areas data obtained from U.S. EPA Office of Water. Abandoned Hardrock Mines data obtained from U.S. Geological Survey's MASMILS database 2002 beta copy. All other layers obtained from ESRI.



A Project of the
Mineral Policy Center
Map by Ali Steimke
May 2002