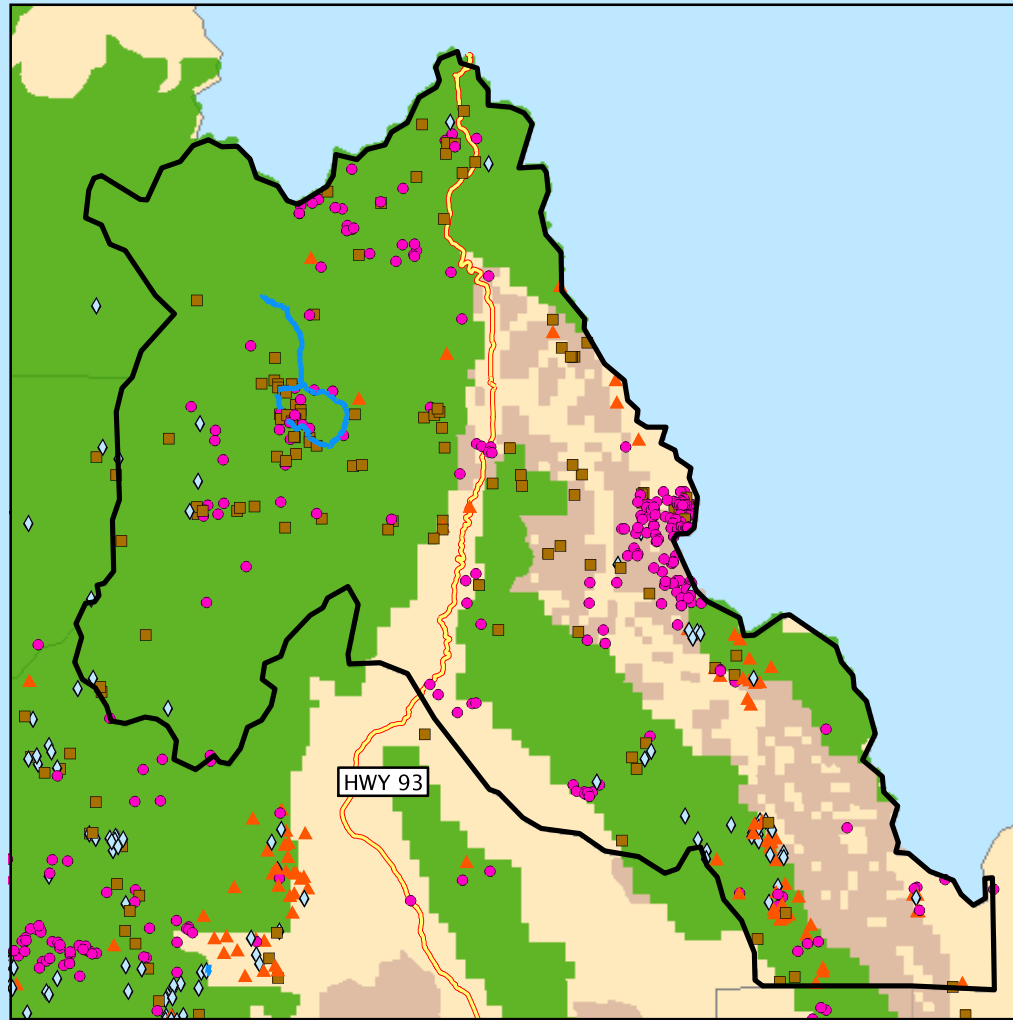


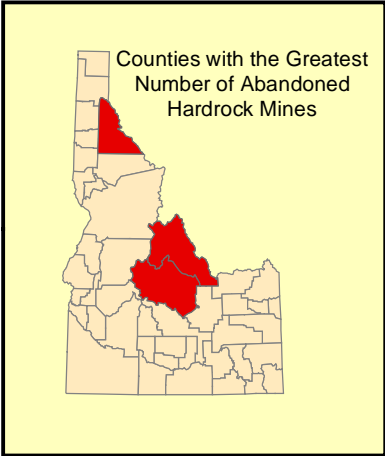
# Abandoned Hardrock Mines and Waters Polluted by Metals

## Lemhi County, ID



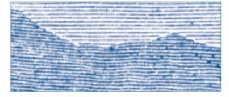
0 15 30 60 Miles

1:1,314,980



**Legend**

Impaired Water Areas	<b>Federal Lands</b>
Impaired Water Segments	Bureau of Indian Affairs
<b>Abandoned Hardrock Mines</b>	Bureau of Land Management
All Others	Bureau of Reclamation
Copper	Department of Defense
Lead	Forest Service
Silver	Fish and Wildlife Service
<b>Major Roads</b>	National Park Service
Limited Access Highway	Other Agencies (NASA, DOE, DOT...)
Highway	Counties
	Cities



MINERAL  
POLICY  
CENTER

A Project of the  
Mineral Policy Center  
Map by Ali Steimke  
May 2002