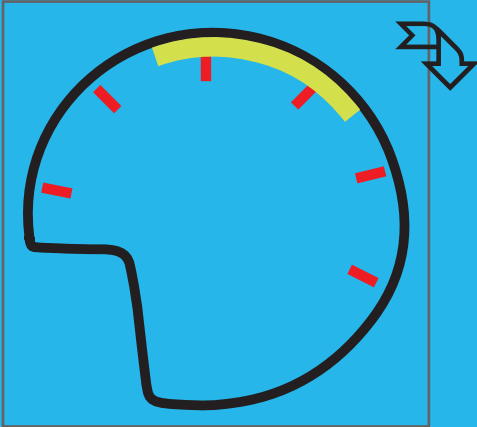


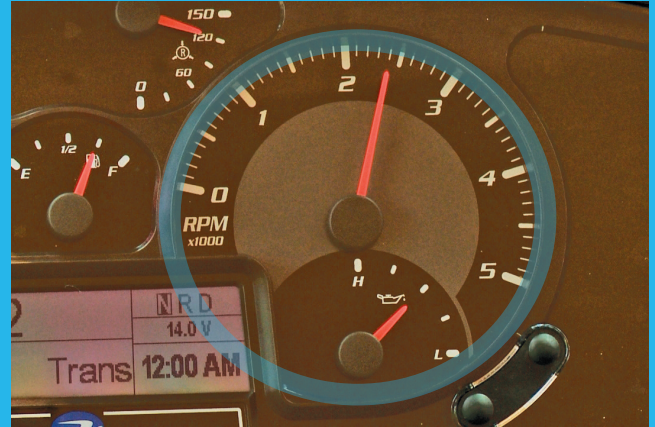
FUEL-SAVING RPM DECAL

TIP SHEET

The most efficient operating range for a propane school-bus engine is between 1600 and 3400 rpm. AFRED has created a decal to help drivers visualize this fuel-efficient range.



1. Peel Backing on the Adhesive Decal.



2. Align the Decal With the Tachometer Dial.



3. Apply the Decal; Press Out Any Air Pockets.

4. Drive With the Engine in the Green Fuel-Efficient Range Whenever Possible.