

**SIX MCF RESIDENTIAL GAS BILL ANALYSIS
FOR TWENTY-FIVE TEXAS CITIES**



GAS SERVICES DIVISION

January through December 2004

Introduction

Included within are five tables reflecting an analysis of a 6 Mcf gas bill for twenty-five Texas cities. These cities provide a geographic representation of the State.

Six Mcf reflects the approximate monthly average consumption of gas on an annual basis for the state, and is used in each table.

All other items such as penalties, taxes, applicable city fees, etc., normally included in a gross bill are excluded.

During 2004, new rates have approved in fifteen of the twenty-five Texas cities used in the following tables. Many of these utilities have not received an increase in their cost of service rates in a decade or more. New rates were approved for the following utilities and municipality:

Atmos Energy - City of Lubbock effective March 1, 2004;
Atmos Energy - City of Midland effective May 1, 2004;
Atmos Energy - City of Odessa effective May 1, 2004;
CenterPoint Energy Entex - Houston Service Area effective January 1, 2004;
Texas Gas Service - El Paso Service Area effective September 1, 2004;
TXU Gas Company - State Wide in over 400 Texas Cities effective May 25, 2004;
The City of Corpus Christi - effective August 1, 2004.

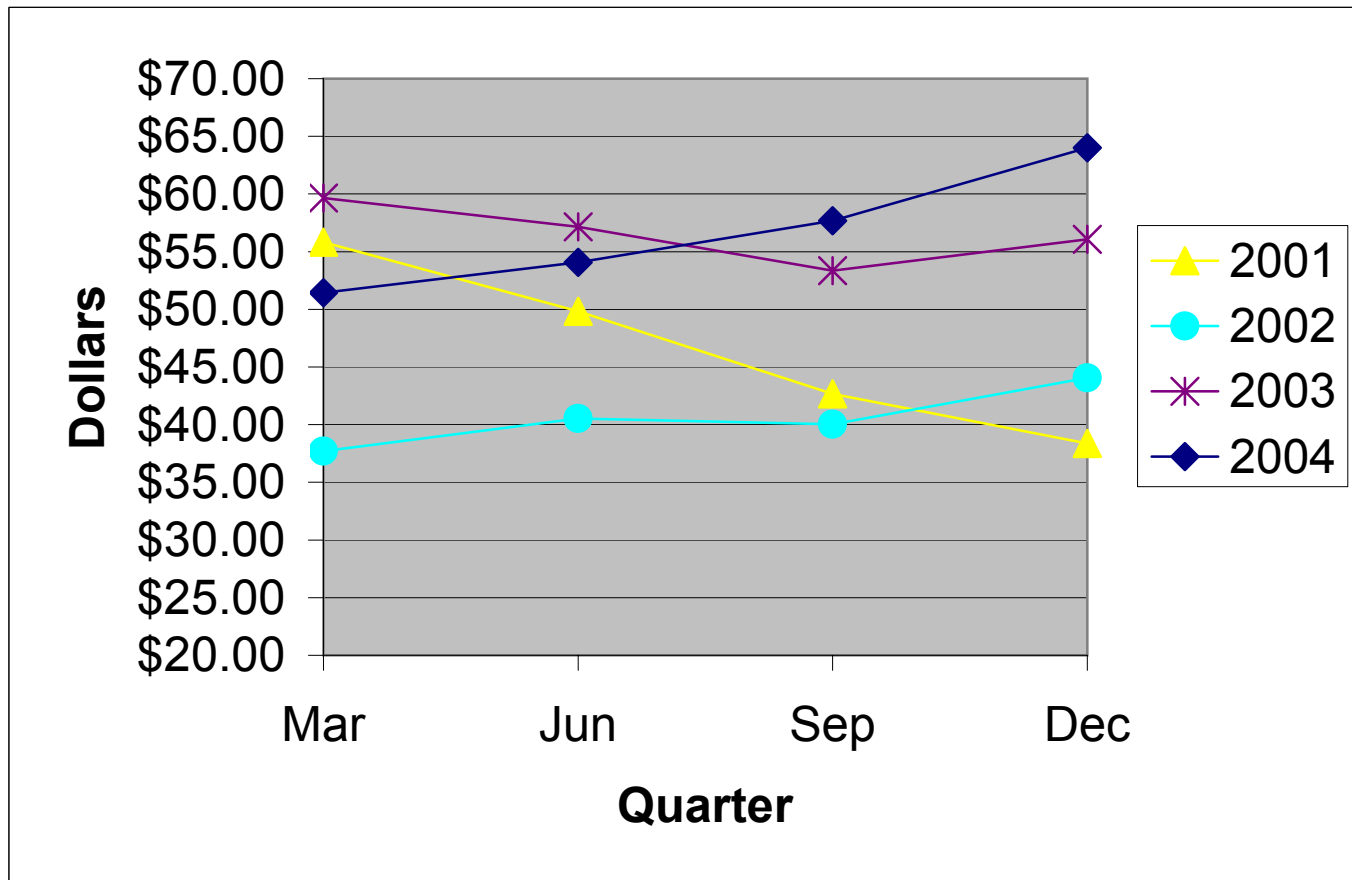
Table of Contents

Introduction	Page 1
Table 1 - Total Bill	Page 2
Chart 1a - Total Bill	Page 3
Table 2 - Analysis of Gas Bill	Pages 4-5
Table 3 - Cost of Gas	Page 6
Chart 3a & 3b - Cost of Gas	Pages 7-8
Table 4 - Analysis of Cost of Gas	Pages 9-10
Table 5 - Cost of Service	Page 11
Table 5a - Cost of Service	Page 12

**TABLE 1 - TWENTY FIVE TEXAS CITIES
SIX MCF RESIDENTIAL GAS BILL
TOTAL BILL
(Cost of Gas Plus Cost of Service)**

CITY	GAS CO.	JAN 04	FEB 04	MAR 04	APR 04	MAY 04	JUN 04	JUL 04	AUG 04	SEP 04	OCT 04	NOV 04	DEC 04
Abilene	TXU	49.14	38.34	44.15	44.15	51.29	53.99	59.89	59.89	59.89	67.68	67.68	67.68
Amarillo	ATM	54.48	53.40	47.62	48.15	51.50	55.83	53.38	51.87	46.16	48.55	64.02	55.03
Austin	TGS	60.07	57.95	55.73	59.61	59.63	64.57	62.06	56.44	58.73	70.33	64.10	56.83
Beaumont	CCE	63.14	63.74	63.74	63.74	63.74	63.74	63.74	63.39	63.39	63.39	74.35	74.35
Brownsville	TGS	47.59	45.34	48.09	45.85	45.85	51.27	49.00	47.08	50.90	62.54	56.23	52.42
Bryan	TXU	52.36	41.56	47.37	47.37	51.29	53.99	59.89	59.89	59.89	67.68	67.68	67.68
Corpus Christi	MUN	64.43	61.49	58.55	62.39	68.15	73.49	70.01	68.59	60.43	60.37	74.59	67.87
Dallas	TXU	47.55	36.75	42.56	42.56	51.29	53.99	59.89	59.89	59.89	67.68	67.68	67.68
El Paso	TGS	45.43	44.56	43.05	43.44	45.54	49.41	49.08	44.63	45.32	55.33	50.92	49.50
Fort Worth	TXU	49.07	38.36	44.13	44.13	51.29	53.99	59.89	59.89	59.89	67.68	67.68	67.68
Galveston	TGS	65.92	62.64	53.82	63.25	61.38	61.38	65.40	62.14	56.40	64.04	78.28	71.29
Houston	CEE	57.86	57.86	59.05	59.05	59.05	59.05	59.05	60.54	60.54	60.54	71.51	71.51
Laredo	CEE	57.06	58.72	58.72	58.72	58.72	58.72	58.72	60.44	60.44	72.29	72.29	72.29
Lubbock	ATM	51.31	49.93	49.57	53.11	53.65	57.43	57.49	53.95	54.43	46.21	57.31	57.37
McAllen	TGS	50.86	48.19	45.94	48.69	46.45	46.45	51.87	49.60	47.68	51.50	63.14	56.83
Midland	ATM	50.83	47.95	42.43	43.63	48.48	53.88	50.58	49.92	44.22	44.22	59.76	45.42
Odessa	ATM	55.27	52.03	48.79	45.85	48.30	52.56	57.36	52.32	47.10	48.72	61.26	44.52
San Angelo	TXU	50.76	39.96	45.77	45.77	51.29	53.99	59.89	59.89	59.89	67.68	67.68	67.68
San Antonio	MUN	55.51	53.64	50.30	49.67	57.23	58.48	52.36	60.81	50.75	56.45	60.29	60.50
Sherman	TXU	49.55	38.75	44.56	44.56	51.29	53.99	59.89	59.89	59.89	67.68	67.68	67.68
Temple	TXU	52.18	41.38	47.19	47.19	51.29	53.99	59.89	59.89	59.89	67.68	67.68	67.68
Texarkana	CEA	69.47	69.49	69.83	68.64	68.69	68.72	68.77	68.81	68.83	68.84	78.93	78.95
Tyler	CEE	57.58	58.54	58.54	58.54	58.54	58.54	58.54	57.43	57.43	57.43	70.27	70.27
Waco	TXU	52.99	42.19	48.00	48.00	51.29	53.99	59.89	59.89	59.89	67.68	67.68	67.68
Wichita Falls	TXU	47.74	36.94	42.75	42.75	51.29	53.99	59.89	59.89	59.89	67.68	67.68	67.68
Average		54.3260	49.5880	50.4100	51.1524	54.2604	56.7772	58.6568	57.8788	56.4704	61.5948	66.6548	63.7628

CHART 1a - TWENTY-FIVE TEXAS CITIES
SIX MCF RESIDENTIAL GAS BILL
TOTAL BILL



**TABLE 2 - TWENTY FIVE TEXAS CITIES
SIX MCF RESIDENTIAL GAS BILL
ANALYSIS OF GAS BILL**

CITY	GAS CO.	Jan-04			Feb-04			Mar-04			Apr-04			May-04			Jun-04		
		A	B	C	A	B	C	A	B	C	A	B	C	A	B	C	A	B	C
Abilene	TXU	13.85	35.29	49.14	13.85	24.49	38.34	13.85	30.30	44.15	13.85	30.30	44.15	15.68	35.61	51.29	15.68	38.31	53.99
Amarillo	ATM	13.96	40.52	54.48	13.96	39.44	53.40	13.96	33.66	47.62	13.96	34.19	48.15	13.96	37.54	51.50	13.96	41.87	55.83
Austin	TGS	17.22	42.85	60.07	17.22	40.73	57.95	17.22	38.51	55.73	17.22	42.39	59.61	17.22	42.41	59.63	17.22	47.35	64.57
Beaumont	CEE	16.97	46.17	63.14	16.97	46.77	63.74	16.97	46.77	63.74	16.97	46.77	63.74	16.97	46.77	63.74	16.97	46.77	63.74
Brownsville	TGS	15.72	31.87	47.59	15.72	29.62	45.34	15.72	32.37	48.09	15.72	30.13	45.85	15.72	30.13	45.85	15.72	35.55	51.27
Bryan	TXU	17.07	35.29	52.36	17.07	24.49	41.56	17.07	30.30	47.37	17.07	30.30	47.37	15.68	35.61	51.29	15.68	38.31	53.99
Corpus Christi	MUN	24.41	40.02	64.43	24.41	37.08	61.49	24.41	34.14	58.55	24.41	37.98	62.39	24.41	43.74	68.15	24.41	49.08	73.49
Dallas	TXU	12.26	35.29	47.55	12.26	24.49	36.75	12.26	30.30	42.56	12.26	30.30	42.56	15.68	35.61	51.29	15.68	38.31	53.99
El Paso	TGS	13.15	32.28	45.43	13.15	31.41	44.56	13.15	29.90	43.05	13.15	30.29	43.44	13.15	32.39	45.54	13.15	36.26	49.41
Fort Worth	TXU	14.46	34.61	49.07	14.46	23.90	38.36	14.46	29.67	44.13	14.46	29.67	44.13	15.68	35.61	51.29	15.68	38.31	53.99
Galveston	TGS	18.92	47.00	65.92	18.92	43.72	62.64	18.92	34.90	53.82	18.92	44.33	63.25	18.92	42.46	61.38	18.92	42.46	61.38
Houston	CEE	13.26	44.60	57.86	13.26	44.60	57.86	13.26	45.79	59.05	13.26	45.79	59.05	13.26	45.79	59.05	13.26	45.79	59.05
Laredo	CEE	16.85	40.21	57.06	16.85	41.87	58.72	16.85	41.87	58.72	16.85	41.87	58.72	16.85	41.87	58.72	16.85	41.87	58.72
Lubbock	ATM	13.99	37.32	51.31	13.99	35.94	49.93	15.25	34.32	49.57	15.25	37.86	53.11	15.25	38.40	53.65	15.25	42.18	57.43
McAllen	TGS	15.72	35.14	50.86	15.72	32.47	48.19	15.72	30.22	45.94	15.72	32.97	48.69	15.72	30.73	46.45	15.72	30.73	46.45
Midland	ATM	13.99	36.84	50.83	13.99	33.96	47.95	13.99	28.44	42.43	13.99	29.64	43.63	15.12	33.36	48.48	15.12	38.76	53.88
Odessa	ATM	13.99	41.28	55.27	13.99	38.04	52.03	13.99	34.80	48.79	13.99	31.86	45.85	15.12	33.18	48.30	15.12	37.44	52.56
San Angelo	TXU	15.47	35.29	50.76	15.47	24.49	39.96	15.47	30.30	45.77	15.47	30.30	45.77	15.68	35.61	51.29	15.68	38.31	53.99
San Antonio	MUN	16.93	38.58	55.51	16.93	36.71	53.64	16.93	33.37	50.30	16.93	32.74	49.67	16.93	40.30	57.23	16.93	41.55	58.48
Sherman	TXU	14.26	35.29	49.55	14.26	24.49	38.75	14.26	30.30	44.56	14.26	30.30	44.56	15.68	35.61	51.29	15.68	38.31	53.99
Temple	TXU	16.89	35.29	52.18	16.89	24.49	41.38	16.89	30.30	47.19	16.89	30.30	47.19	15.68	35.61	51.29	15.68	38.31	53.99
Texarkana	CEA	24.75	44.72	69.47	24.75	44.74	69.49	24.75	45.08	69.83	24.75	43.89	68.64	24.75	43.94	68.69	24.75	43.97	68.72
Tyler	CEE	16.29	41.29	57.58	16.29	42.25	58.54	16.29	42.25	58.54	16.29	42.25	58.54	16.29	42.25	58.54	16.29	42.25	58.54
Waco	TXU	17.70	35.29	52.99	17.70	24.49	42.19	17.70	30.30	48.00	17.70	30.30	48.00	15.68	35.61	51.29	15.68	38.31	53.99
Wichita Falls	TXU	12.45	35.29	47.74	12.45	24.49	36.94	12.45	30.30	42.75	12.45	30.30	42.75	15.68	35.61	51.29	15.68	38.31	53.99
Average		16.02	38.30	54.33	16.02	33.57	49.59	16.07	34.34	50.41	16.07	35.08	51.15	16.43	37.83	54.26	16.43	40.35	56.78

A-COST OF SERVICE (EXCLUDING COST OF GAS)

B-COST OF GAS (INCLUDES COST OF GAS IN BASE PLUS COST OF GAS ADJUSTMENT)

C-TOTAL BILL (TOTAL COST OF GAS PLUS COST OF SERVICE)

**TABLE 2 - TWENTY FIVE TEXAS CITIES
SIX MCF RESIDENTIAL GAS BILL
ANALYSIS OF GAS BILL**

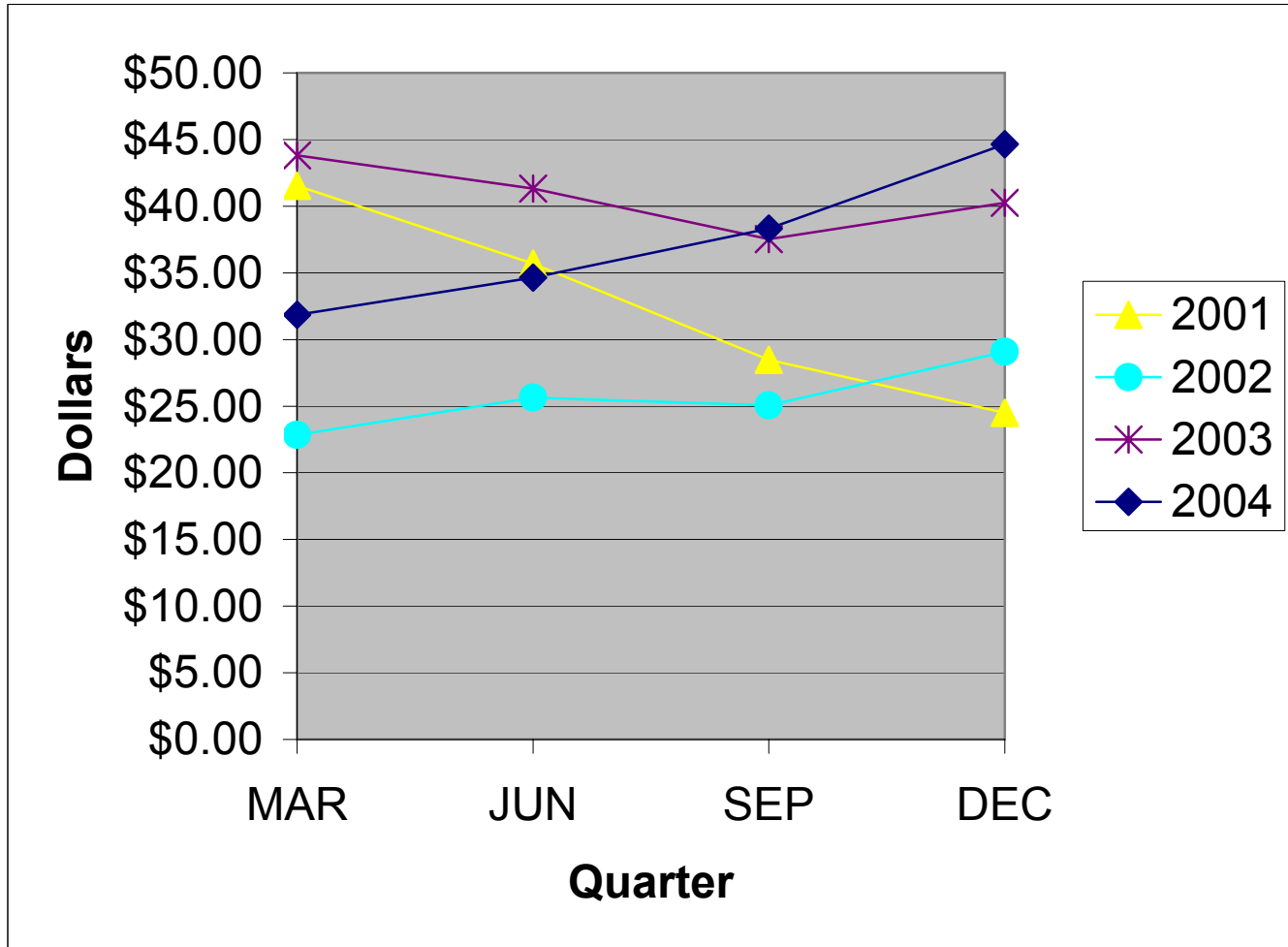
Jul-04			Aug-04			Sep-04			Oct-04			Nov-04			Dec-04			GAS CO. CITY	
A	B	C	A	B	C	A	B	C	A	B	C	A	B	C	A	B	C		
15.68	44.21	59.89	15.68	44.21	59.89	15.68	44.21	59.89	15.68	52.00	67.68	15.68	52.00	67.68	15.68	52.00	67.68	TXU	Abilene
13.96	39.42	53.38	13.96	37.91	51.87	13.96	32.20	46.16	13.96	34.59	48.55	13.96	50.06	64.02	13.96	41.07	55.03	ATM	Amarillo
17.22	44.84	62.06	17.22	39.22	56.44	17.22	41.51	58.73	17.22	53.11	70.33	17.22	46.88	64.10	17.22	39.61	56.83	TGS	Austin
16.97	46.77	63.74	16.97	46.42	63.39	16.97	46.42	63.39	16.97	46.42	63.39	16.97	57.38	74.35	16.97	57.38	74.35	CEE	Beaumont
15.72	33.28	49.00	15.72	31.36	47.08	15.72	35.18	50.90	15.72	46.82	62.54	15.72	40.51	56.23	15.72	36.70	52.42	TGS	Brownsville
15.68	44.21	59.89	15.68	44.21	59.89	15.68	44.21	59.89	15.68	52.00	67.68	15.68	52.00	67.68	15.68	52.00	67.68	TXU	Bryan
24.41	45.60	70.01	25.63	42.96	68.59	25.63	34.80	60.43	25.63	34.74	60.37	25.63	48.96	74.59	25.63	42.24	67.87	MUN	Corpus Christi
15.68	44.21	59.89	15.68	44.21	59.89	15.68	44.21	59.89	15.68	52.00	67.68	15.68	52.00	67.68	15.68	52.00	67.68	TXU	Dallas
13.15	35.93	49.08	13.15	31.48	44.63	13.22	32.10	45.32	13.22	42.11	55.33	13.22	37.70	50.92	13.22	36.28	49.50	TGS	El Paso
15.68	44.21	59.89	15.68	44.21	59.89	15.68	44.21	59.89	15.68	52.00	67.68	15.68	52.00	67.68	15.68	52.00	67.68	TXU	Fort Worth
18.92	46.48	65.40	18.92	43.22	62.14	18.92	37.48	56.40	18.92	45.12	64.04	18.92	59.36	78.28	18.92	52.37	71.29	TGS	Galveston
13.26	45.79	59.05	13.26	47.28	60.54	13.26	47.28	60.54	13.26	47.28	60.54	13.26	58.25	71.51	13.26	58.25	71.51	CEE	Houston
16.85	41.87	58.72	16.85	43.59	60.44	16.85	43.59	60.44	16.85	55.44	72.29	16.85	55.44	72.29	16.85	55.44	72.29	CEE	Laredo
15.25	42.24	57.49	15.25	38.70	53.95	15.25	39.18	54.43	15.25	30.96	46.21	15.25	42.06	57.31	15.25	42.12	57.37	ATM	Lubbock
15.72	36.15	51.87	15.72	33.88	49.60	15.72	31.96	47.68	15.72	35.78	51.50	15.72	47.42	63.14	15.72	41.11	56.83	TGS	McAllen
15.12	35.46	50.58	15.12	34.80	49.92	15.12	29.10	44.22	15.12	29.10	44.22	15.12	44.64	59.76	15.12	30.30	45.42	ATM	Midland
15.12	42.24	57.36	15.12	37.20	52.32	15.12	31.98	47.10	15.12	33.60	48.72	15.12	46.14	61.26	15.12	29.40	44.52	ATM	Odessa
15.68	44.21	59.89	15.68	44.21	59.89	15.68	44.21	59.89	15.68	52.00	67.68	15.68	52.00	67.68	15.68	52.00	67.68	TXU	San Angelo
16.93	35.43	52.36	16.93	43.88	60.81	16.93	33.82	50.75	16.93	39.52	56.45	16.93	43.36	60.29	16.93	43.57	60.50	MUN	San Antonio
15.68	44.21	59.89	15.68	44.21	59.89	15.68	44.21	59.89	15.68	52.00	67.68	15.68	52.00	67.68	15.68	52.00	67.68	TXU	Sherman
15.68	44.21	59.89	15.68	44.21	59.89	15.68	44.21	59.89	15.68	52.00	67.68	15.68	52.00	67.68	15.68	52.00	67.68	TXU	Temple
24.75	44.02	68.77	24.75	44.06	68.81	24.75	44.08	68.83	24.75	44.09	68.84	24.75	54.18	78.93	24.75	54.20	78.95	CEA	Texarkana
16.29	42.25	58.54	16.29	41.14	57.43	16.29	41.14	57.43	16.29	41.14	57.43	16.29	53.98	70.27	16.29	53.98	70.27	CEE	Tyler
15.68	44.21	59.89	15.68	44.21	59.89	15.68	44.21	59.89	15.68	52.00	67.68	15.68	52.00	67.68	15.68	52.00	67.68	TXU	Waco
15.68	44.21	59.89	15.68	44.21	59.89	15.68	44.21	59.89	15.68	52.00	67.68	15.68	52.00	67.68	15.68	52.00	67.68	TXU	Wichita Falls
16.43	42.23	58.66	16.48	41.40	57.88	16.48	39.99	56.47	16.48	45.11	61.59	16.48	50.17	66.65	16.48	47.28	63.76		Average

**TABLE 3 - TWENTY FIVE TEXAS CITIES
SIX MCF RESIDENTIAL GAS BILL
***COST OF GAS
(EXCLUDING COST OF SERVICE)**

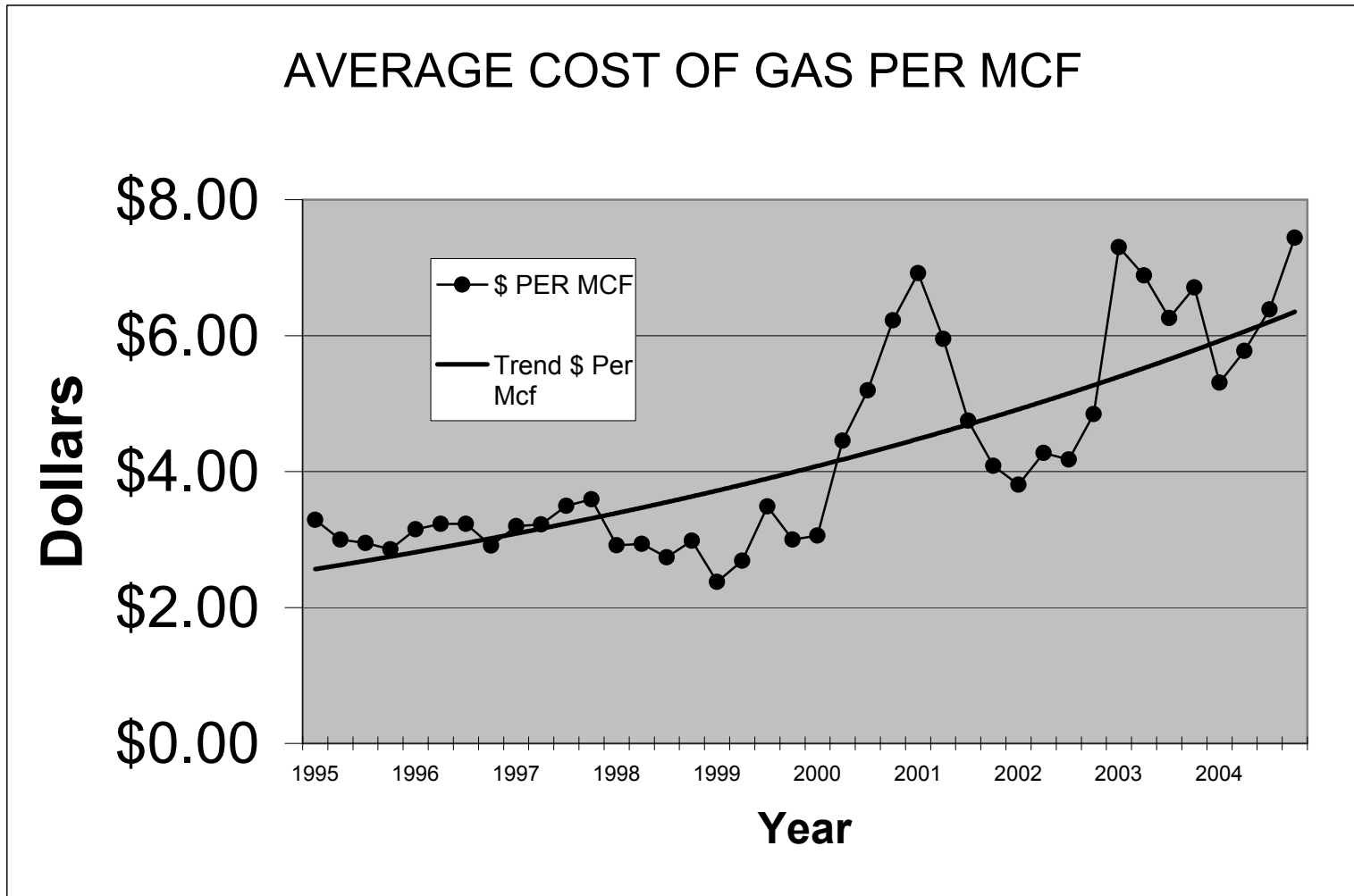
CITY	GAS CO.	Jan-04	Feb-04	Mar-04	Apr-04	May-04	Jun-04	Jul-04	Aug-04	Sep-04	Oct-04	Nov-04	Dec-04
Abilene	TXU	35.29	24.49	30.30	30.30	35.61	38.31	44.21	44.21	44.21	52.00	52.00	52.00
Amarillo	ATM	40.52	39.44	33.66	34.19	37.54	41.87	39.42	37.91	32.20	34.59	50.06	41.07
Austin	TGS	42.85	40.73	38.51	42.39	42.41	47.35	44.84	39.22	41.51	53.11	46.88	39.61
Beaumont	CEE	46.17	46.77	46.77	46.77	46.77	46.77	46.77	46.42	46.42	46.42	57.38	57.38
Brownsville	TGS	31.87	29.62	32.37	30.13	30.13	35.55	33.28	31.36	35.18	46.82	40.51	36.70
Bryan	TXU	35.29	24.49	30.30	30.30	35.61	38.31	44.21	44.21	44.21	52.00	52.00	52.00
Corpus Christi	MUN	40.02	37.08	34.14	37.98	43.74	49.08	45.60	42.96	34.80	34.74	48.96	42.24
Dallas	TXU	35.29	24.49	30.30	30.30	35.61	38.31	44.21	44.21	44.21	52.00	52.00	52.00
El Paso	TGS	32.28	31.41	29.90	30.29	32.39	36.26	35.93	31.48	32.10	42.11	37.70	36.28
Fort Worth	TXU	34.61	23.90	29.67	29.67	35.61	38.31	44.21	44.21	44.21	52.00	52.00	52.00
Galveston	TGS	47.00	43.72	34.90	44.33	42.46	42.46	46.48	43.22	37.48	45.12	59.36	52.37
Houston	CEE	44.60	44.60	45.79	45.79	45.79	45.79	45.79	47.28	47.28	47.28	58.25	58.25
Laredo	CEE	40.21	41.87	41.87	41.87	41.87	41.87	41.87	43.59	43.59	55.44	55.44	55.44
Lubbock	ATM	37.32	35.94	34.32	37.86	38.40	42.18	42.24	38.70	39.18	30.96	42.06	42.12
McAllen	TGS	35.14	32.47	30.22	32.97	30.73	30.73	36.15	33.88	31.96	35.78	47.42	41.11
Midland	ATM	36.84	33.96	28.44	29.64	33.36	38.76	35.46	34.80	29.10	29.10	44.64	30.30
Odessa	ATM	41.28	38.04	34.80	31.86	33.18	37.44	42.24	37.20	31.98	33.60	46.14	29.40
San Angelo	TXU	35.29	24.49	30.30	30.30	35.61	38.31	44.21	44.21	44.21	52.00	52.00	52.00
San Antonio	MUN	38.58	36.71	33.37	32.74	40.30	41.55	35.43	43.88	33.82	39.52	43.36	43.57
Sherman	TXU	35.29	24.49	30.30	30.30	35.61	38.31	44.21	44.21	44.21	52.00	52.00	52.00
Temple	TXU	35.29	24.49	30.30	30.30	35.61	38.31	44.21	44.21	44.21	52.00	52.00	52.00
Texarkana	CEA	44.72	44.74	45.08	43.89	43.94	43.97	44.02	44.06	44.08	44.09	54.18	54.20
Tyler	CEE	41.29	42.25	42.25	42.25	42.25	42.25	42.25	41.14	41.14	41.14	53.98	53.98
Waco	TXU	35.29	24.49	30.30	30.30	35.61	38.31	44.21	44.21	44.21	52.00	52.00	52.00
Wichita Falls	TXU	35.29	24.49	30.30	30.30	35.61	38.31	44.21	44.21	44.21	52.00	52.00	52.00
Average		38.30	33.57	34.34	35.08	37.83	40.35	42.23	41.40	39.99	45.11	50.17	47.28

***INCLUDES COST OF GAS IN BASE RATE PLUS COST OF GAS ADJUSTMENT.

CHART 3a - TWENTY-FIVE TEXAS CITIES
SIX MCF RESIDENTIAL GAS BILL
COST OF GAS



TWENTY-FIVE TEXAS CITIES
SIX MCF RESIDENTIAL GAS BILL
COST OF GAS



**TABLE 4 - TWENTY FIVE TEXAS CITIES
SIX MCF RESIDENTIAL GAS BILL
ANALYSIS OF COST OF GAS**

CITY	GAS CO.	Jan-04			Feb-04			Mar-04			Apr-04			May-04			Jun-04		
		A	B	C	A	B	C	A	B	C	A	B	C	A	B	C	A	B	C
Abilene	TXU	0.00	35.29	35.29	0.00	24.49	24.49	0.00	30.30	30.30	0.00	30.30	30.30	0.00	35.61	35.61	0.00	38.31	38.31
Amarillo	ATM	0.00	35.29	35.29	0.00	39.44	39.44	0.00	33.66	33.66	0.00	34.19	34.19	0.00	37.54	37.54	0.00	41.87	41.87
Austin	TGS	0.00	35.29	35.29	0.00	40.73	40.73	0.00	38.51	38.51	0.00	42.39	42.39	0.00	42.41	42.41	0.00	47.35	47.35
Beaumont	CEE	20.40	35.29	55.69	20.40	26.37	46.77	20.40	26.37	46.77	20.40	26.37	46.77	20.40	26.37	46.77	20.40	26.37	46.77
Brownsville	TGS	0.00	35.29	35.29	0.00	29.62	29.62	0.00	32.37	32.37	0.00	30.13	30.13	0.00	30.13	30.13	0.00	35.55	35.55
Bryan	TXU	0.00	35.29	35.29	0.00	24.49	24.49	0.00	30.30	30.30	0.00	30.30	30.30	0.00	35.61	35.61	0.00	38.31	38.31
Corpus Christi	MUN	0.00	35.29	35.29	0.00	37.08	37.08	0.00	34.14	34.14	0.00	37.98	37.98	0.00	43.74	43.74	0.00	49.08	49.08
Dallas	TXU	0.00	35.29	35.29	0.00	24.49	24.49	0.00	30.30	30.30	0.00	30.30	30.30	0.00	35.61	35.61	0.00	38.31	38.31
El Paso	TGS	0.00	35.29	35.29	0.00	31.41	31.41	0.00	29.90	29.90	0.00	30.29	30.29	0.00	32.39	32.39	0.00	36.26	36.26
Fort Worth	TXU	16.52	35.29	51.81	16.52	7.38	23.90	16.52	13.15	29.67	16.52	13.15	29.67	0.00	35.61	35.61	0.00	38.31	38.31
Galveston	TGS	0.00	35.29	35.29	0.00	43.72	43.72	0.00	34.90	34.90	0.00	44.33	44.33	0.00	42.46	42.46	0.00	42.46	42.46
Houston	CEE	0.00	35.29	35.29	0.00	44.60	44.60	0.00	45.79	45.79	0.00	45.79	45.79	0.00	45.79	45.79	0.00	45.79	45.79
Laredo	CEE	18.87	35.29	54.16	18.87	23.00	41.87	18.87	23.00	41.87	18.87	23.00	41.87	18.87	23.00	41.87	18.87	23.00	41.87
Lubbock	ATM	0.00	35.29	35.29	0.00	35.94	35.94	0.00	34.32	34.32	0.00	37.86	37.86	0.00	38.40	38.40	0.00	42.18	42.18
McAllen	TGS	0.00	35.29	35.29	0.00	32.47	32.47	0.00	30.22	30.22	0.00	32.97	32.97	0.00	30.73	30.73	0.00	30.73	30.73
Midland	ATM	0.00	35.29	35.29	0.00	33.96	33.96	0.00	28.44	28.44	0.00	29.64	29.64	0.00	33.36	33.36	0.00	38.76	38.76
Odessa	ATM	0.00	35.29	35.29	0.00	38.04	38.04	0.00	34.80	34.80	0.00	31.86	31.86	0.00	33.18	33.18	0.00	37.44	37.44
San Angelo	TXU	0.00	35.29	35.29	0.00	24.49	24.49	0.00	30.30	30.30	0.00	30.30	30.30	0.00	35.61	35.61	0.00	38.31	38.31
San Antonio	MUN	13.20	35.29	48.49	13.20	23.51	36.71	13.20	20.17	33.37	13.20	19.54	32.74	13.20	27.10	40.30	13.20	28.35	41.55
Sherman	TXU	0.00	35.29	35.29	0.00	24.49	24.49	0.00	30.30	30.30	0.00	30.30	30.30	0.00	35.61	35.61	0.00	38.31	38.31
Temple	TXU	0.00	35.29	35.29	0.00	24.49	24.49	0.00	30.30	30.30	0.00	30.30	30.30	0.00	35.61	35.61	0.00	38.31	38.31
Texarkana	CEA	0.00	35.29	35.29	0.00	44.74	44.74	0.00	45.08	45.08	0.00	43.89	43.89	0.00	43.94	43.94	0.00	43.97	43.97
Tyler	CEE	19.65	35.29	54.94	19.65	22.60	42.25	19.65	22.60	42.25	19.65	22.60	42.25	19.65	22.60	42.25	19.65	22.60	42.25
Waco	TXU	0.00	35.29	35.29	0.00	24.49	24.49	0.00	30.30	30.30	0.00	30.30	30.30	0.00	35.61	35.61	0.00	38.31	38.31
Wichita Falls	TXU	0.00	35.29	35.29	0.00	24.49	24.49	0.00	30.30	30.30	0.00	30.30	30.30	0.00	35.61	35.61	0.00	38.31	38.31
Average		3.55	35.29	38.84	3.55	30.02	33.57	3.55	30.79	34.34	3.55	31.54	35.08	2.88	34.95	37.83	2.88	37.46	40.35

A-COST OF GAS INCLUDED IN BASE RATE

B-COST OF GAS ADJUSTMENT

C-TOTAL COST OF GAS

**TABLE 4 - TWENTY FIVE TEXAS CITIES
SIX MCF RESIDENTIAL GAS BILL
ANALYSIS OF COST OF GAS**

Jul-04			Aug-04			Sep-04			Oct-04			Nov-04			Dec-04			GAS CO.	CITY
A	B	C	A	B	C	A	B	C	A	B	C	A	B	C	A	B	C		
0.00	44.21	44.21	0.00	44.21	44.21	0.00	44.21	44.21	0.00	52.00	52.00	0.00	52.00	52.00	0.00	52.00	52.00	TXU	Abilene
0.00	39.42	39.42	0.00	37.91	37.91	0.00	32.20	32.20	0.00	34.59	34.59	0.00	50.06	50.06	0.00	41.07	41.07	ATM	Amarillo
0.00	44.84	44.84	0.00	39.22	39.22	0.00	41.51	41.51	0.00	53.11	53.11	0.00	46.88	46.88	0.00	39.61	39.61	TGS	Austin
20.40	26.37	46.77	20.40	26.02	46.42	20.40	26.02	46.42	20.40	26.02	46.42	20.40	36.98	57.38	20.40	36.98	57.38	CEE	Beaumont
0.00	33.28	33.28	0.00	31.36	31.36	0.00	35.18	35.18	0.00	46.82	46.82	0.00	40.51	40.51	0.00	36.70	36.70	TGS	Brownsville
0.00	44.21	44.21	0.00	44.21	44.21	0.00	44.21	44.21	0.00	52.00	52.00	0.00	52.00	52.00	0.00	52.00	52.00	TXU	Bryan
0.00	45.60	45.60	0.00	42.96	42.96	0.00	34.80	34.80	0.00	34.74	34.74	0.00	48.96	48.96	0.00	42.24	42.24	MUN	Corpus Christi
0.00	44.21	44.21	0.00	44.21	44.21	0.00	44.21	44.21	0.00	52.00	52.00	0.00	52.00	52.00	0.00	52.00	52.00	TXU	Dallas
0.00	35.93	35.93	0.00	31.48	31.48	0.00	32.10	32.10	0.00	42.11	42.11	0.00	37.70	37.70	0.00	36.28	36.28	TGS	El Paso
0.00	44.21	44.21	0.00	44.21	44.21	0.00	44.21	44.21	0.00	52.00	52.00	0.00	52.00	52.00	0.00	52.00	52.00	TXU	Fort Worth
0.00	46.48	46.48	0.00	43.22	43.22	0.00	37.48	37.48	0.00	45.12	45.12	0.00	59.36	59.36	0.00	52.37	52.37	TGS	Galveston
0.00	45.79	45.79	0.00	47.28	47.28	0.00	47.28	47.28	0.00	47.28	47.28	0.00	58.25	58.25	0.00	58.25	58.25	CEE	Houston
18.87	23.00	41.87	18.87	24.72	43.59	18.87	24.72	43.59	18.87	36.57	55.44	18.87	36.57	55.44	18.87	36.57	55.44	CEE	Laredo
0.00	42.24	42.24	0.00	38.70	38.70	0.00	39.18	39.18	0.00	30.96	30.96	0.00	42.06	42.06	0.00	42.12	42.12	ATM	Lubbock
0.00	36.15	36.15	0.00	33.88	33.88	0.00	31.96	31.96	0.00	35.78	35.78	0.00	47.42	47.42	0.00	41.11	41.11	TGS	McAllen
0.00	35.46	35.46	0.00	34.80	34.80	0.00	29.10	29.10	0.00	29.10	29.10	0.00	44.64	44.64	0.00	30.30	30.30	ATM	Midland
0.00	42.24	42.24	0.00	37.20	37.20	0.00	31.98	31.98	0.00	33.60	33.60	0.00	46.14	46.14	0.00	29.40	29.40	ATM	Odessa
0.00	44.21	44.21	0.00	44.21	44.21	0.00	44.21	44.21	0.00	52.00	52.00	0.00	52.00	52.00	0.00	52.00	52.00	TXU	San Angelo
13.20	22.23	35.43	13.20	30.68	43.88	13.20	20.62	33.82	13.20	26.32	39.52	13.20	30.16	43.36	13.20	30.37	43.57	MUN	San Antonio
0.00	44.21	44.21	0.00	44.21	44.21	0.00	44.21	44.21	0.00	52.00	52.00	0.00	52.00	52.00	0.00	52.00	52.00	TXU	Sherman
0.00	44.21	44.21	0.00	44.21	44.21	0.00	44.21	44.21	0.00	52.00	52.00	0.00	52.00	52.00	0.00	52.00	52.00	TXU	Temple
0.00	44.02	44.02	0.00	44.06	44.06	0.00	44.08	44.08	0.00	44.09	44.09	0.00	54.18	54.18	0.00	54.20	54.20	CEA	Texarkana
19.65	22.60	42.25	19.65	21.49	41.14	19.65	21.49	41.14	19.65	21.49	41.14	19.65	34.33	53.98	19.65	34.33	53.98	CEE	Tyler
0.00	44.21	44.21	0.00	44.21	44.21	0.00	44.21	44.21	0.00	52.00	52.00	0.00	52.00	52.00	0.00	52.00	52.00	TXU	Waco
0.00	44.21	44.21	0.00	44.21	44.21	0.00	44.21	44.21	0.00	52.00	52.00	0.00	52.00	52.00	0.00	52.00	52.00	TXU	Wichita Falls
2.88	39.34	42.23	2.88	38.51	41.40	2.88	37.10	39.99	2.88	42.23	45.11	2.88	47.29	50.17	2.88	44.40	47.28		Average

**TABLE 5 - TWENTY FIVE TEXAS CITIES
SIX MCF RESIDENTIAL GAS BILL
COST OF SERVICE
(EXCLUDING COST OF GAS)**

CITY	GAS CO.	Jan-04	Feb-04	Mar-04	Apr-04	May-04	Jun-04	Jul-04	Aug-04	Sep-04	Oct-04	Nov-04	Dec-04
Abilene	TXU	13.85	13.85	13.85	13.85	15.68	15.68	15.68	15.68	15.68	15.68	15.68	15.68
Amarillo	ATM	13.96	13.96	13.96	13.96	13.96	13.96	13.96	13.96	13.96	13.96	13.96	13.96
Austin	TGS	17.22	17.22	17.22	17.22	17.22	17.22	17.22	17.22	17.22	17.22	17.22	17.22
Beaumont	CEE	16.97	16.97	16.97	16.97	16.97	16.97	16.97	16.97	16.97	16.97	16.97	16.97
Brownsville	TGS	15.72	15.72	15.72	15.72	15.72	15.72	15.72	15.72	15.72	15.72	15.72	15.72
Bryan	TXU	17.07	17.07	17.07	17.07	15.68	15.68	15.68	15.68	15.68	15.68	15.68	15.68
Corpus Christi	MUN	24.41	24.41	24.41	24.41	24.41	24.41	24.41	25.63	25.63	25.63	25.63	25.63
Dallas	TXU	12.26	12.26	12.26	12.26	15.68	15.68	15.68	15.68	15.68	15.68	15.68	15.68
El Paso	TGS	13.15	13.15	13.15	13.15	13.15	13.15	13.15	13.15	13.22	13.22	13.22	13.22
Fort Worth	TXU	14.46	14.46	14.46	14.46	15.68	15.68	15.68	15.68	15.68	15.68	15.68	15.68
Galveston	TGS	18.92	18.92	18.92	18.92	18.92	18.92	18.92	18.92	18.92	18.92	18.92	18.92
Houston	CEE	13.26	13.26	13.26	13.26	13.26	13.26	13.26	13.26	13.26	13.26	13.26	13.26
Laredo	CEE	16.85	16.85	16.85	16.85	16.85	16.85	16.85	16.85	16.85	16.85	16.85	16.85
Lubbock	ATM	13.99	13.99	15.25	15.25	15.25	15.25	15.25	15.25	15.25	15.25	15.25	15.25
McAllen	TGS	15.72	15.72	15.72	15.72	15.72	15.72	15.72	15.72	15.72	15.72	15.72	15.72
Midland	ATM	13.99	13.99	13.99	13.99	15.12	15.12	15.12	15.12	15.12	15.12	15.12	15.12
Odessa	ATM	13.99	13.99	13.99	13.99	15.12	15.12	15.12	15.12	15.12	15.12	15.12	15.12
San Angelo	TXU	15.47	15.47	15.47	15.47	15.68	15.68	15.68	15.68	15.68	15.68	15.68	15.68
San Antonio	MUN	16.93	16.93	16.93	16.93	16.93	16.93	16.93	16.93	16.93	16.93	16.93	16.93
Sherman	TXU	14.26	14.26	14.26	14.26	15.68	15.68	15.68	15.68	15.68	15.68	15.68	15.68
Temple	TXU	16.89	16.89	16.89	16.89	15.68	15.68	15.68	15.68	15.68	15.68	15.68	15.68
Texarkana	CEA	24.75	24.75	24.75	24.75	24.75	24.75	24.75	24.75	24.75	24.75	24.75	24.75
Tyler	CEE	16.29	16.29	16.29	16.29	16.29	16.29	16.29	16.29	16.29	16.29	16.29	16.29
Waco	TXU	17.70	17.70	17.70	17.70	15.68	15.68	15.68	15.68	15.68	15.68	15.68	15.68
Wichita Falls	TXU	12.45	12.45	12.45	12.45	15.68	15.68	15.68	15.68	15.68	15.68	15.68	15.68
Average		16.02	16.02	16.07	16.07	16.43	16.43	16.43	16.48	16.48	16.48	16.48	16.48

**TWENTY-FIVE TEXAS CITIES
SIX MCF RESIDENTIAL GAS BILL
COST OF SERVICE**

