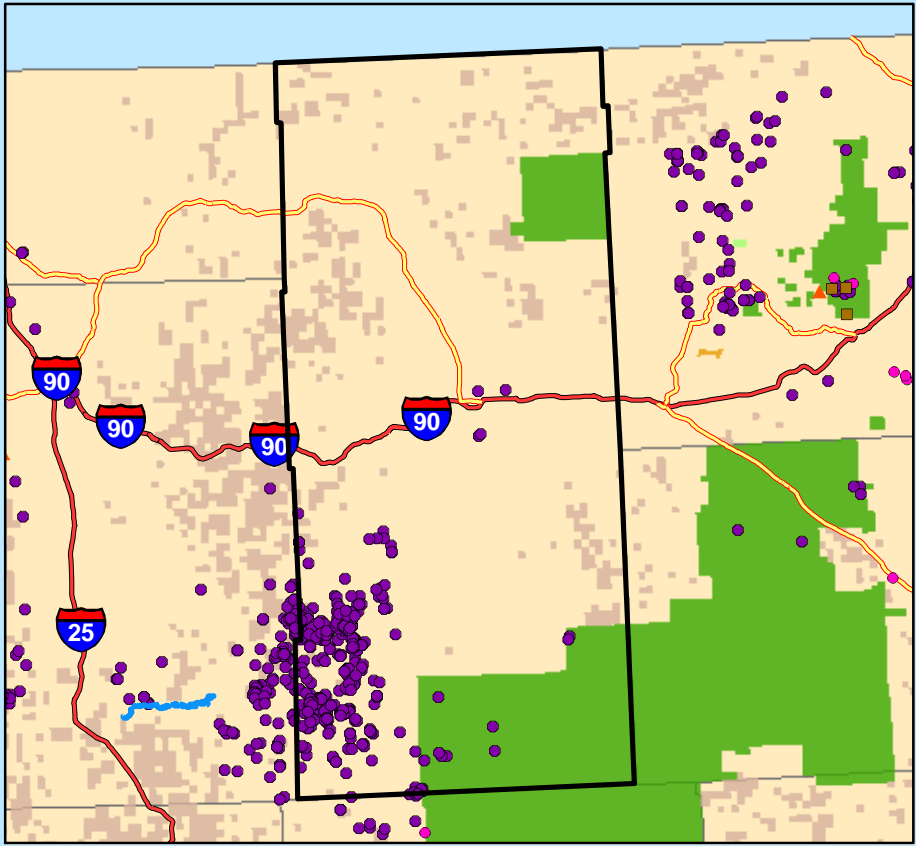


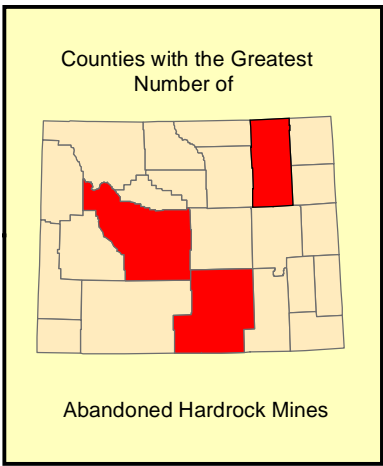
Abandoned Hardrock Mines and Waters Polluted by Metals

Campbell County, WY



0 20 40 80 Miles

1:1,703,464



Legend

- Cities
- Impaired Water Areas
- Impaired Water Segments

Abandoned Hardrock Mines

- All Others
- ▲ Copper
- Gold
- ◇ Iron
- Uranium

Road Classification

- Limited Access Highway
- Highway

Federal Lands

- Bureau of Indian Affairs
- Bureau of Land Management
- Bureau of Reclamation
- Department of Defense
- Forest Service
- Fish and Wildlife Service
- National Park Service
- Other Agencies (NASA, DOE, DOT...)
- Counties



A Project of the Mineral Policy Center
 Map by Ali Steimke
 May 2002