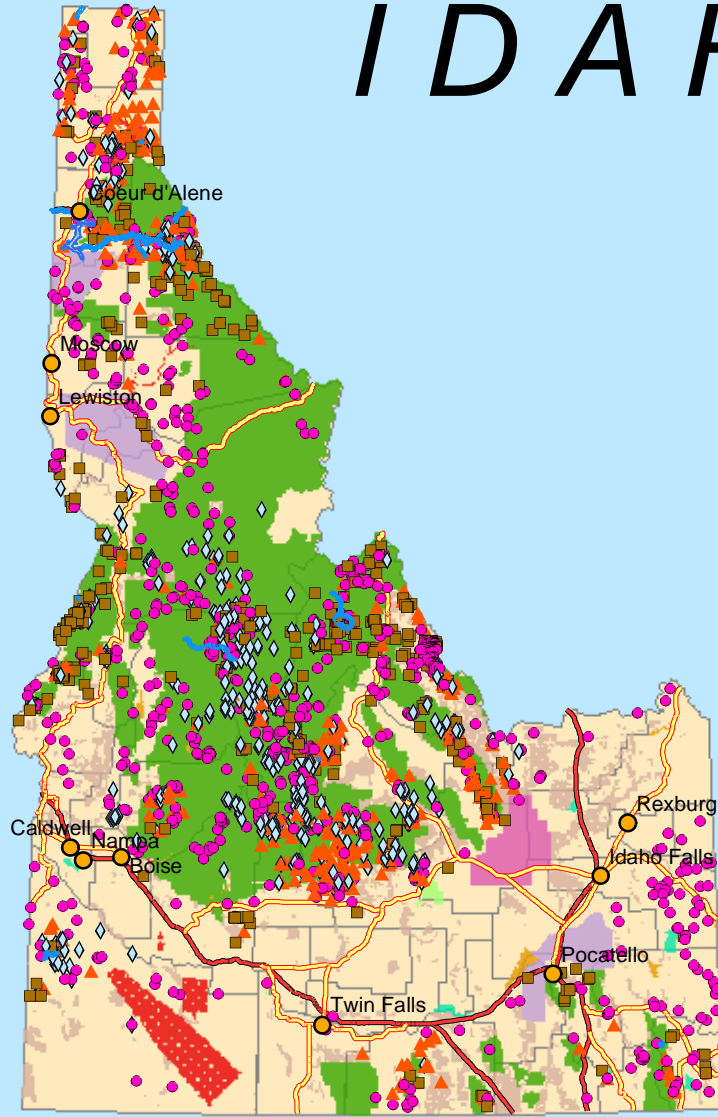


Abandoned Hardrock Mines

IDAHO



1:5,331,649

0 87.5 175 350 Miles



Legend

● Cities

Abandoned Hardrock Mines

● All Others

■ Copper

▲ Lead

◇ Silver

Road Classification

— Limited Access Highway

— Highway

Federal Lands

■ Bureau of Indian Affairs

■ Bureau of Land Management

■ Bureau of Reclamation

■ Department of Defense

■ Forest Service

■ Fish and Wildlife Service

■ National Park Service

■ Other Agencies (NASA, DOE, DOT...)

■ Counties

Impaired Water Segments and Impaired Water Areas data obtained from U.S. EPA Office of Water. Abandoned Hardrock Mines data obtained from U.S. Geological Survey's MASMILS database 2002 beta copy. All other layers obtained from ESRI.



A Project of the
Mineral Policy Center
Map by Ali Steimke
May 2002