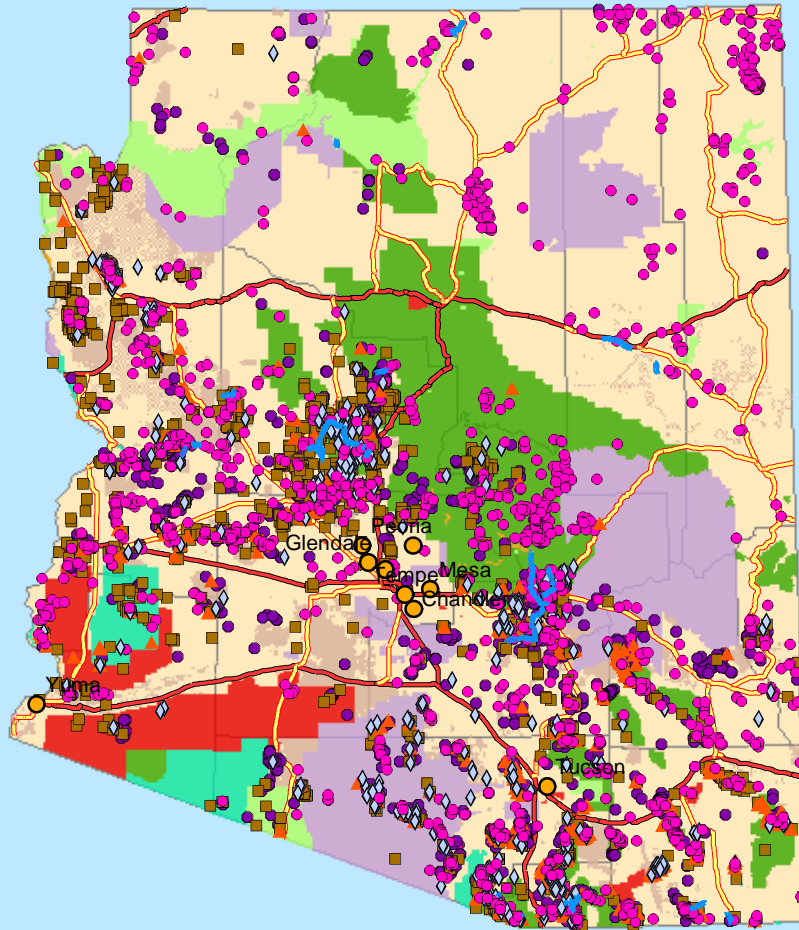


# Abandoned Hardrock Mines and Waters Polluted by Metals

## ARIZONA



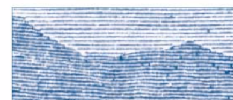
1:5,192,636 0 75 150 300 Miles



### Legend

- |                                 |                                      |
|---------------------------------|--------------------------------------|
| ● Cities                        | <b>Federal Lands</b>                 |
| ■ Impaired Water Areas          | ■ Bureau of Indian Affairs           |
| — Impaired Water Segments       | ■ Bureau of Land Management          |
| <b>Abandoned Hardrock Mines</b> | ■ Bureau of Reclamation              |
| ● All Others                    | ■ Department of Defense              |
| ● Copper                        | ■ Forest Service                     |
| ■ Gold                          | ■ Fish and Wildlife Service          |
| ▲ Lead                          | ■ National Park Service              |
| ◇ Silver                        | ■ Other Agencies (NASA, DOE, DOT...) |
| <b>Road Classification</b>      | ■ Counties                           |
| — Limited Access Highway        |                                      |
| — Highway                       |                                      |

Impaired Water Segments and Impaired Water Areas data obtained from U.S. EPA Office of Water. Abandoned Hardrock Mines data obtained from U.S. Geological Survey's MASMILS database 2002 beta copy. All other layers obtained from ESRI.



**MINERAL  
POLICY  
CENTER**

A Project of the  
Mineral Policy Center  
Map by Ali Steimke  
May 2002