

**SIX MCF RESIDENTIAL GAS BILL ANALYSIS
FOR TWENTY-FIVE TEXAS CITIES**



GAS SERVICES DIVISION
January through December 2013

Table of Contents

Introduction to Report	Page	1
Table 1 Total Bill	Page	2
Chart 1a Total Bill	Page	3
Table 2 Analysis of Gas Bill Components	Pages	4 - 5
Table 3 Cost of Gas Portion of Total Bill	Page	6
Chart 3a Average Cost of Gas Portion of Total Bill by Quarter	Page	7
Chart 3b Average Cost of Gas Portion of Total Bill Annually	Page	8
Table 4 Cost of Service Portion of Total Bill	Page	9
Chart 4a Average Cost of Service by Quarter	Page	10

Introduction

This analysis presents a summary of the natural gas cost of service and cost of gas included in a 6 Mcf residential gas bill for twenty-five Texas cities. These cities are a diverse geographic representation of the State of Texas and are served by three major publicly held gas utility companies and two municipal gas utilities.

A residential gas bill is composed primarily of two costs, the cost to provide the service and the cost of gas. The cost to provide the service includes the assets or pipe in the ground and operation and maintenance expenses. The cost of gas includes the cost to the utility for the natural gas supplied to a residence.

The Six Mcf consumption level reflects the approximate monthly average consumption of gas on an annual basis for the State of Texas and is used in each Table as a basis for comparison.

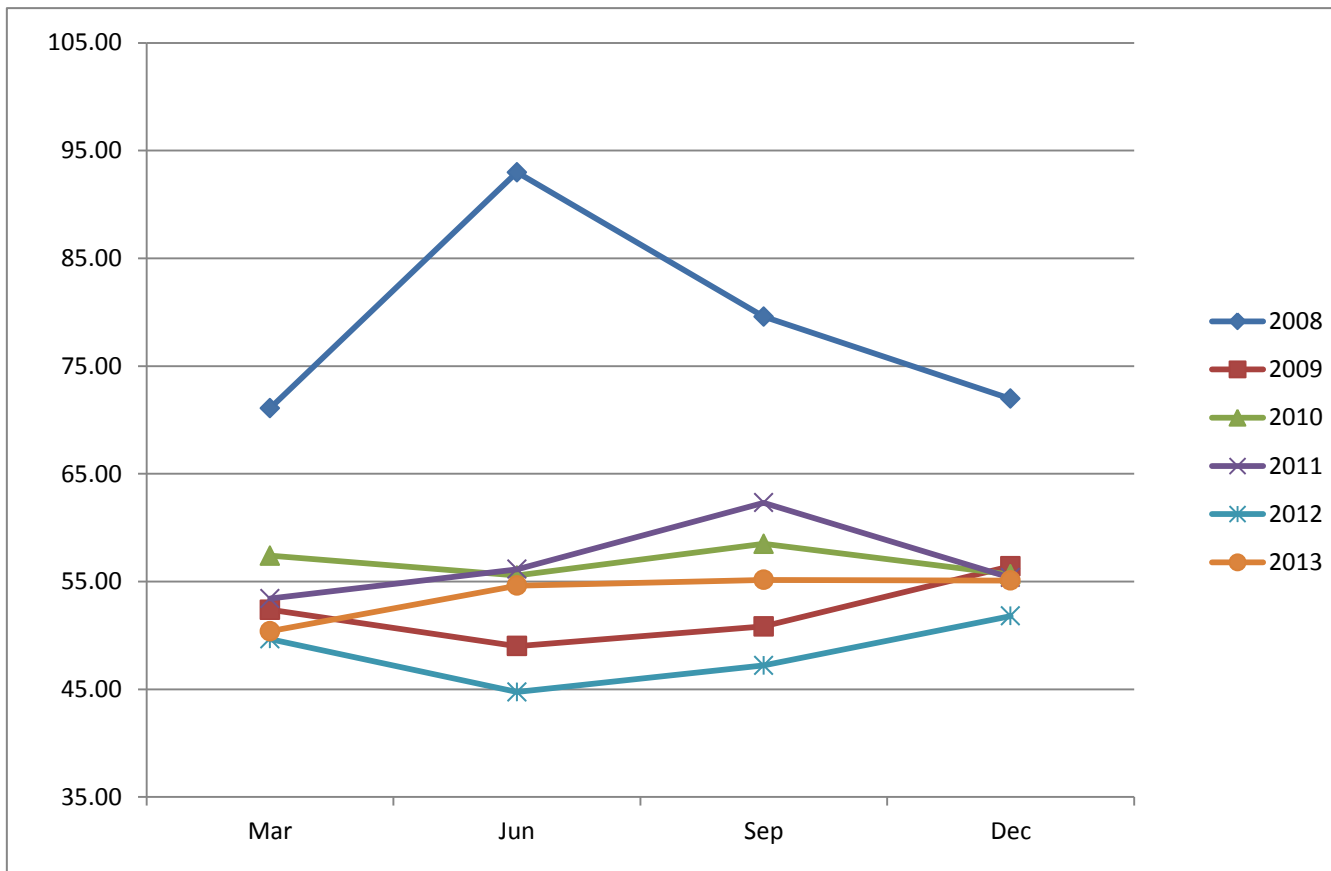
All other items that may be reflected on a residential gas bill such as special tariff rider fees, penalties, taxes, applicable city fee, etc, normally included in a gross bill are excluded in this comparison.

**TABLE 1 - TWENTY-FIVE TEXAS CITIES
SIX MCF RESIDENTIAL GAS BILL
TOTAL BILL**

City	Gas Utility	Jan-13	Feb-13	Mar-13	Apr-13	May-13	Jun-13	Jul-13	Aug-13	Sep-13	Oct-13	Nov-13	Dec-13	Average
Abilene	ATM	51.20	\$ 49.70	\$ 49.10	\$ 50.09	\$ 51.89	\$ 54.99	\$ 55.59	\$ 56.79	\$ 58.29	\$ 58.80	\$ 57.53	\$ 57.03	\$ 54.25
Amarillo	ATW	38.55	40.41	42.63	47.85	49.05	49.11	48.75	46.53	46.23	46.95	48.21	46.65	45.91
Austin	TGS	42.04	41.40	41.79	42.71	49.50	48.42	44.00	43.16	42.98	43.19	44.67	45.56	44.12
Beaumont	CEE	69.10	69.10	69.74	69.74	76.10	76.10	76.10	76.10	69.88	69.88	69.88	69.88	71.80
Brownsville	TGS	36.94	36.49	37.01	39.98	42.15	41.56	38.38	38.04	36.71	36.52	37.00	38.82	38.30
Bryan	ATM	51.20	49.70	49.10	50.09	51.89	54.99	55.59	56.79	58.29	58.80	57.53	57.03	54.25
Corpus Christi	MUN	57.79	57.73	56.83	61.63	65.77	64.69	58.45	57.73	56.41	57.67	57.43	57.97	59.18
Dallas	ATM	50.63	49.13	48.53	49.52	51.32	55.47	56.07	57.27	58.77	59.28	57.00	56.50	54.12
El Paso	TGS	35.24	34.54	35.79	38.47	40.64	41.75	41.39	38.83	41.66	38.60	40.07	43.56	39.21
Ft. Worth	ATM	51.20	49.70	49.10	50.09	51.89	54.99	55.59	56.79	58.29	58.80	57.53	57.03	54.25
Galveston	TGS	56.73	56.20	56.88	60.66	62.95	62.33	61.05	60.29	60.02	63.17	64.49	65.79	60.88
Houston	CEE	57.95	58.56	58.56	58.56	63.41	63.40	64.22	56.32	56.32	56.33	56.33	56.35	58.86
Laredo	CEE	60.03	60.44	60.44	60.44	64.70	64.70	66.30	63.05	63.05	63.05	63.06	63.07	62.69
Lubbock	ATW	39.53	41.39	43.61	48.83	50.03	50.09	49.73	47.51	47.21	47.93	49.19	47.63	46.89
McAllen	TGS	59.27	58.81	59.33	62.30	64.47	63.88	60.71	63.49	62.16	61.97	62.44	64.26	61.92
Midland	ATW	41.59	43.45	45.67	50.89	52.09	52.15	51.79	49.57	49.27	49.99	51.25	49.69	48.95
Odessa	ATW	41.59	43.45	45.67	50.89	52.09	52.15	51.79	49.57	49.27	49.99	51.25	49.69	48.95
San Angelo	ATM	51.53	50.03	49.43	50.41	52.21	55.31	55.91	57.11	58.61	59.12	57.53	57.03	54.52
San Antonio *	MUN	51.91	51.15	52.27	57.72	51.83	56.82	53.97	48.28	50.27	46.89	47.25	49.71	51.67
Sherman	ATM	51.20	49.70	49.10	50.09	51.89	54.99	55.59	56.79	58.29	58.80	57.53	57.03	54.25
Temple	ATM	51.20	49.70	49.10	50.09	51.89	54.99	55.59	56.79	58.29	58.80	57.53	57.03	54.25
Texarkana	CEA	66.27	66.27	66.27	71.33	71.33	71.33	71.33	71.33	71.33	71.33	67.28	67.28	69.39
Tyler	CEE	48.44	48.44	45.79	45.79	50.63	50.63	50.63	50.63	46.00	46.00	46.00	46.00	47.91
Waco	ATM	51.20	49.70	49.10	50.09	51.89	54.99	55.59	56.79	58.29	58.80	57.53	57.03	54.25
Wichita Falls	ATM	51.20	49.70	49.10	50.09	51.89	54.99	55.59	56.79	58.29	58.80	57.53	57.03	54.25
Average		\$ 50.54	\$ 50.20	\$ 50.40	\$ 52.73	\$ 54.94	\$ 56.19	\$ 55.59	\$ 54.89	\$ 54.97	\$ 55.18	\$ 54.92	\$ 55.21	\$ 53.80
Quarter Average			\$ 50.38			\$ 54.62		\$ 55.15		\$ 55.10				

* The City of San Antonio includes a \$2.20 per Mcf Base Cost of Gas in the base rates, i.e., For comparison, the \$2.20 per Mcf Base Cost of gas is removed from the Cost of Service Base Rates and included in the Cost of gas Calculations.
The Total Gas Bill includes the Cost of Service plus the Cost of Gas.

CHART 1a - TWENTY-FIVE TEXAS CITIES SIX MCF RESIDENTIAL GAS BILL TOTAL BILL



**TABLE 2 - TWENTY-FIVE TEXAS CITIES
SIX MCF RESIDENTIAL GAS BILL
ANALYSIS OF GAS BILL COMPONENTS**

City	Gas Utility	Jan-13			Feb-13			Mar-13			Apr-13			May-13			Jun-13		
		A	B	C	A	B	C	A	B	C	A	B	C	A	B	C	A	B	C
Abilene	ATM	\$ 20.20	\$ 31.00	\$ 51.20	\$ 20.20	\$ 29.50	\$ 49.70	\$ 20.20	\$ 28.90	\$ 49.10	\$ 20.20	\$ 29.89	\$ 50.09	\$ 20.20	\$ 31.69	\$ 51.89	\$ 20.20	\$ 34.78	\$ 54.99
Amarillo	ATW	18.03	20.52	38.55	18.03	22.38	40.41	18.03	24.60	42.63	18.03	29.82	47.85	18.03	31.02	49.05	18.03	31.08	49.11
Austin	TGS	14.70	27.34	42.04	14.70	26.70	41.40	14.70	27.08	41.79	14.70	28.00	42.71	14.70	34.79	49.50	13.32	35.10	48.42
Beaumont	CEE	23.58	45.52	69.10	23.58	45.52	69.10	23.58	46.16	69.74	23.58	46.16	69.74	23.58	52.52	76.10	23.58	52.52	76.10
Brownsville	TGS	13.73	23.21	36.94	13.73	22.76	36.49	13.73	23.28	37.01	13.73	26.25	39.98	13.73	28.42	42.15	13.73	27.83	41.56
Bryan	ATM	20.20	31.00	51.20	20.20	29.50	49.70	20.20	28.90	49.10	20.20	29.89	50.09	20.20	31.69	51.89	20.20	34.78	54.99
Corpus Christi	MUN	30.25	27.54	57.79	30.25	27.48	57.73	30.25	26.58	56.83	30.25	31.38	61.63	30.25	35.52	65.77	30.25	34.44	64.69
Dallas	ATM	19.74	30.89	50.63	19.74	29.39	49.13	19.74	28.79	48.53	19.74	29.78	49.52	19.74	31.58	51.32	20.68	34.78	55.47
El Paso	TGS	10.80	24.44	35.24	10.80	23.74	34.54	10.80	24.99	35.79	10.80	27.67	38.47	10.80	29.84	40.64	10.80	30.95	41.75
Ft. Worth	ATM	20.20	31.00	51.20	20.20	29.50	49.70	20.20	28.90	49.10	20.20	29.89	50.09	20.20	31.69	51.89	20.20	34.78	54.99
Galveston	TGS	28.24	28.49	56.73	28.24	27.96	56.20	28.24	28.64	56.88	28.24	32.42	60.66	28.24	34.71	62.95	28.24	34.09	62.33
Houston	CEE	16.32	41.63	57.95	16.32	42.24	58.56	16.32	42.24	58.56	16.32	42.24	58.56	16.32	47.09	63.41	16.32	47.08	63.40
Laredo	CEE	28.36	31.67	60.03	28.36	32.08	60.44	28.36	32.08	60.44	28.36	32.08	60.44	28.36	36.34	64.70	28.36	36.34	64.70
Lubbock	ATW	19.01	20.52	39.53	19.01	22.38	41.39	19.01	24.60	43.61	19.01	29.82	48.83	19.01	31.02	50.03	19.01	31.08	50.09
McAllen	TGS	36.05	23.21	59.27	36.05	22.76	58.81	36.05	23.28	59.33	36.05	26.25	62.30	36.05	28.42	64.47	36.05	27.83	63.88
Midland	ATW	21.07	20.52	41.59	21.07	22.38	43.45	21.07	24.60	45.67	21.07	29.82	50.89	21.07	31.02	52.09	21.07	31.08	52.15
Odessa	ATW	21.07	20.52	41.59	21.07	22.38	43.45	21.07	24.60	45.67	21.07	29.82	50.89	21.07	31.02	52.09	21.07	31.08	52.15
San Angelo	ATM	20.53	31.00	51.53	20.53	29.50	50.03	20.53	28.90	49.43	20.53	29.89	50.41	20.53	31.69	52.21	20.53	34.78	55.31
San Antonio *	MUN	24.07	27.84	51.91	24.07	27.08	51.15	24.07	28.20	52.27	24.07	33.65	57.72	24.07	27.76	51.83	24.07	32.75	56.82
Sherman	ATM	20.20	31.00	51.20	20.20	29.50	49.70	20.20	28.90	49.10	20.20	29.89	50.09	20.20	31.69	51.89	20.20	34.78	54.99
Temple	ATM	20.20	31.00	51.20	20.20	29.50	49.70	20.20	28.90	49.10	20.20	29.89	50.09	20.20	31.69	51.89	20.20	34.78	54.99
Texarkana	CEA	30.54	35.72	66.27	30.54	35.72	66.27	30.54	35.72	66.27	30.54	40.78	71.33	30.54	40.78	71.33	30.54	40.78	71.33
Tyler	CEE	23.43	25.02	48.44	23.43	25.02	48.44	23.43	22.37	45.79	23.43	22.37	45.79	23.43	27.20	50.63	23.43	27.20	50.63
Waco	ATM	20.20	31.00	51.20	20.20	29.50	49.70	20.20	28.90	49.10	20.20	29.89	50.09	20.20	31.69	51.89	20.20	34.78	54.99
Wichita Falls	ATM	20.20	31.00	51.20	20.20	29.50	49.70	20.20	28.90	49.10	20.20	29.89	50.09	20.20	31.69	51.89	20.20	34.78	54.99
Average		\$ 21.64	\$ 28.90	\$ 50.54	\$ 21.64	\$ 28.56	\$ 50.20	\$ 21.64	\$ 28.76	\$ 50.40	\$ 21.64	\$ 31.10	\$ 52.73	\$ 21.64	\$ 33.30	\$ 54.94	\$ 21.62	\$ 34.57	\$ 56.19

* The City of San Antonio includes a \$2.20 per Mcf Base Cost of Gas in the base rates, i.e., For comparison, the \$2.20 per Mcf Base Cost of gas is removed from the Cost of Service Base Rates and included in the Cost of Gas Calculation.
The Total Gas Bill includes the Cost of Service plus the Cost of Gas.

ATM	Atmos Energy Corp.	A = Cost of Service
CEA	CenterPoint Energy Arkla	B = Cost of Gas
CEE	CenterPoint Energy Entex	C = Total Bill
TGS	Texas Gas Service	
MUN	Municipal	

**TABLE 2 - TWENTY-FIVE TEXAS CITIES
SIX MCF RESIDENTIAL GAS BILL
ANALYSIS OF GAS BILL COMPONENTS**

City	Gas Utility	Jul-13			Aug-13			Sep-13			Oct-13			Nov-13			Dec-13		
		A	B	C	A	B	C	A	B	C	A	B	C	A	B	C	A	B	C
Abilene	ATM	\$ 20.20	\$ 35.38	\$ 55.59	\$ 20.20	\$ 36.58	\$ 56.79	\$ 20.20	\$ 38.08	\$ 58.29	\$ 20.20	\$ 38.59	\$ 58.80	\$ 21.22	\$ 36.32	\$ 57.53	\$ 21.22	\$ 35.82	\$ 57.03
Amarillo	ATW	18.03	30.72	48.75	18.03	28.50	46.53	18.03	28.20	46.23	18.03	28.92	46.95	18.03	30.18	48.21	18.03	28.62	46.65
Austin	TGS	13.32	30.67	44.00	13.32	29.84	43.16	13.32	29.66	42.98	13.32	29.86	43.19	13.32	31.35	44.67	13.32	32.23	45.56
Beaumont	CEE	23.58	52.52	76.10	23.58	52.52	76.10	23.58	46.30	69.88	23.58	46.30	69.88	23.58	46.30	69.88	23.58	46.30	69.88
Brownsville	TGS	13.73	24.65	38.38	14.08	23.96	38.04	14.08	22.63	36.71	14.08	22.45	36.52	14.08	22.92	37.00	14.08	24.74	38.82
Bryan	ATM	20.20	35.38	55.59	20.20	36.58	56.79	20.20	38.08	58.29	20.20	38.59	58.80	21.22	36.32	57.53	21.22	35.82	57.03
Corpus Christi	MUN	30.25	28.20	58.45	30.25	27.48	57.73	30.25	26.16	56.41	30.25	27.42	57.67	30.25	27.18	57.43	30.25	27.72	57.97
Dallas	ATM	20.68	35.38	56.07	20.68	36.58	57.27	20.68	38.08	58.77	20.68	38.59	59.28	20.68	36.32	57.00	20.68	35.82	56.50
El Paso	TGS	13.07	28.32	41.39	13.07	25.76	38.83	13.07	28.59	41.66	13.07	25.53	38.60	13.07	27.00	40.07	13.07	30.49	43.56
Ft. Worth	ATM	20.20	35.38	55.59	20.20	36.58	56.79	20.20	38.08	58.29	20.20	38.59	58.80	21.22	36.32	57.53	21.22	35.82	57.03
Galveston	TGS	28.24	32.81	61.05	28.24	32.05	60.29	28.24	31.78	60.02	28.24	34.93	63.17	28.24	36.25	64.49	28.24	37.55	65.79
Houston	CEE	17.14	47.08	64.22	17.14	39.18	56.32	17.14	39.18	56.32	17.14	39.19	56.33	17.14	39.20	56.33	17.14	39.21	56.35
Laredo	CEE	29.97	36.33	66.30	29.97	33.08	63.05	29.97	33.08	63.05	29.97	33.08	63.05	29.97	33.09	63.06	29.97	33.10	63.07
Lubbock	ATW	19.01	30.72	49.73	19.01	28.50	47.51	19.01	28.20	47.21	19.01	28.92	47.93	19.01	30.18	49.19	19.01	28.62	47.63
McAllen	TGS	36.05	24.65	60.71	39.52	23.96	63.49	39.52	22.63	62.16	39.52	22.45	61.97	39.52	22.92	62.44	39.52	24.74	64.26
Midland	ATW	21.07	30.72	51.79	21.07	28.50	49.57	21.07	28.20	49.27	21.07	28.92	49.99	21.07	30.18	51.25	21.07	28.62	49.69
Odessa	ATW	21.07	30.72	51.79	21.07	28.50	49.57	21.07	28.20	49.27	21.07	28.92	49.99	21.07	30.18	51.25	21.07	28.62	49.69
San Angelo	ATM	20.53	35.38	55.91	20.53	36.58	57.11	20.53	38.08	58.61	20.53	38.59	59.12	21.22	36.32	57.53	21.22	35.82	57.03
San Antonio *	MUN	24.07	29.90	53.97	24.07	24.21	48.28	24.07	26.20	50.27	24.07	22.82	46.89	24.07	23.18	47.25	24.07	25.64	49.71
Sherman	ATM	20.20	35.38	55.59	20.20	36.58	56.79	20.20	38.08	58.29	20.20	38.59	58.80	21.22	36.32	57.53	21.22	35.82	57.03
Temple	ATM	20.20	35.38	55.59	20.20	36.58	56.79	20.20	38.08	58.29	20.20	38.59	58.80	21.22	36.32	57.53	21.22	35.82	57.03
Texarkana	CEA	30.54	40.78	71.33	30.54	40.78	71.33	30.54	40.78	71.33	30.54	40.78	71.33	30.54	36.73	67.28	30.54	36.73	67.28
Tyler	CEE	23.43	27.20	50.63	23.43	27.20	50.63	23.43	22.57	46.00	23.43	22.57	46.00	23.43	22.57	46.00	23.43	22.57	46.00
Waco	ATM	20.20	35.38	55.59	20.20	36.58	56.79	20.20	38.08	58.29	20.20	38.59	58.80	21.22	36.32	57.53	21.22	35.82	57.03
Wichita Falls	ATM	20.20	35.38	55.59	20.20	36.58	56.79	20.20	38.08	58.29	20.20	38.59	58.80	21.22	36.32	57.53	21.22	35.82	57.03
Average		\$ 21.81	\$ 33.78	\$ 55.59	\$ 21.96	\$ 32.93	\$ 54.89	\$ 21.96	\$ 33.00	\$ 54.97	\$ 21.96	\$ 33.22	\$ 55.18	\$ 22.27	\$ 32.65	\$ 54.92	\$ 22.20	\$ 33.01	\$ 55.21

* The City of San Antonio includes a \$2.20 per Mcf Base Cost of Gas in the base rates, i.e., For comparison, the \$2.20 per Mcf Base Cost of gas is removed from the Cost of Service Base Rates and included in the Cost of Gas Calculation.
The Total Gas Bill includes the Cost of Service plus the Cost of Gas.

ATM	Atmos Energy Corp.	A = Cost of Service
CEA	CenterPoint Energy Arkla	B = Cost of Gas
CEE	CenterPoint Energy Entex	C = Total Bill
TGS	Texas Gas Service	
MUN	Municipal	

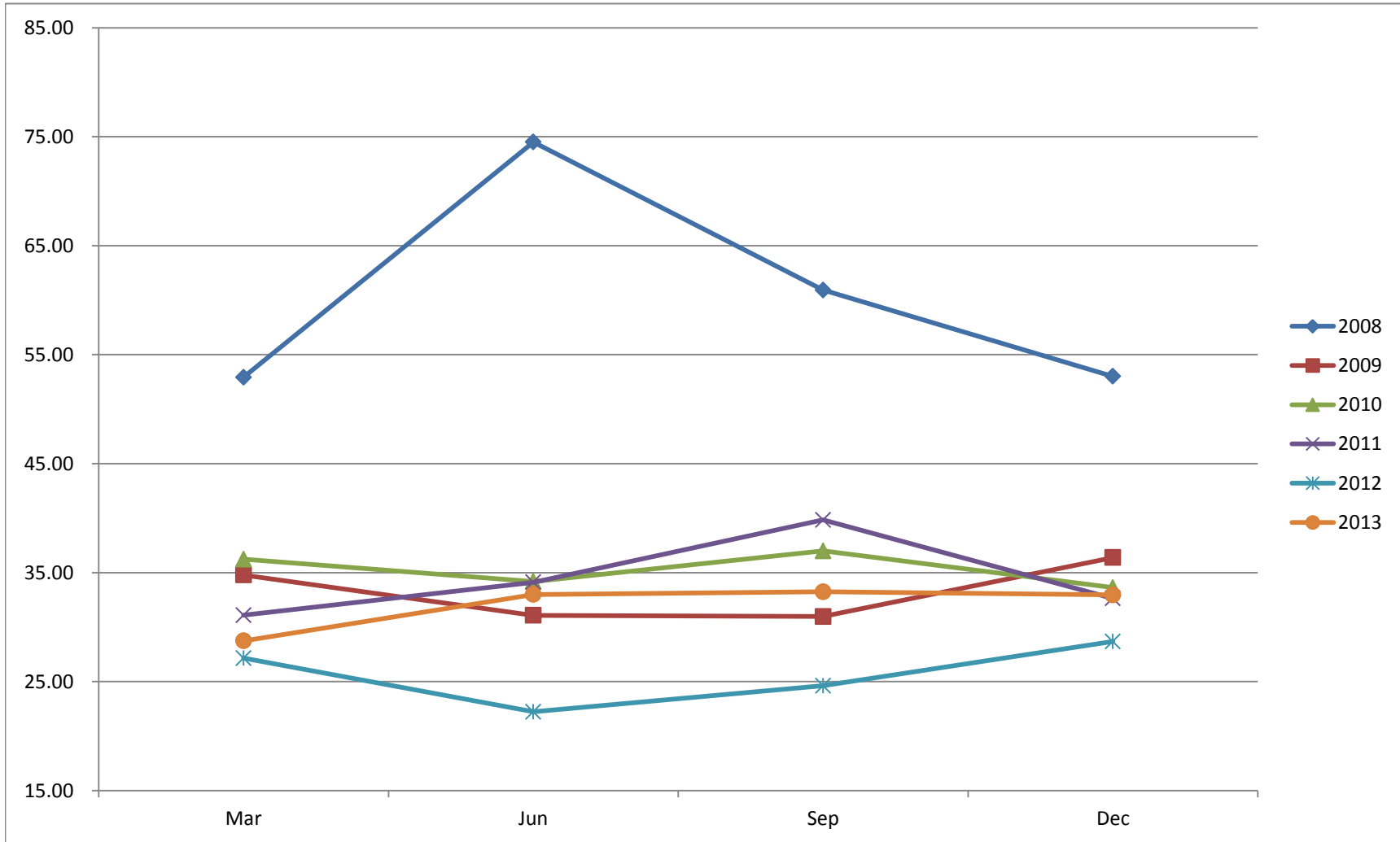
**TABLE 3 - TWENTY-FIVE TEXAS CITIES
SIX MCF RESIDENTIAL GAS BILL
COST OF GAS**

City	Gas Utility	Jan-13	Feb-13	Mar-13	Apr-13	May-13	Jun-13	Jul-13	Aug-13	Sep-13	Oct-13	Nov-13	Dec-13	Average
Abilene	ATM	\$ 31.00	\$ 29.50	\$ 28.90	\$ 29.89	\$ 31.69	\$ 34.78	\$ 35.38	\$ 36.58	\$ 38.08	\$ 38.59	\$ 36.32	\$ 35.82	\$ 33.88
Amarillo	ATW	20.52	22.38	24.60	29.82	31.02	31.08	30.72	28.50	28.20	28.92	30.18	28.62	\$ 27.88
Austin	TGS	27.34	26.70	27.08	28.00	34.79	35.10	30.67	29.84	29.66	29.86	31.35	32.23	\$ 30.22
Beaumont	CEE	45.52	45.52	46.16	46.16	52.52	52.52	52.52	52.52	46.30	46.30	46.30	46.30	\$ 48.22
Brownsville	TGS	23.21	22.76	23.28	26.25	28.42	27.83	24.65	23.96	22.63	22.45	22.92	24.74	\$ 24.43
Bryan	ATM	31.00	29.50	28.90	29.89	31.69	34.78	35.38	36.58	38.08	38.59	36.32	35.82	\$ 33.88
Corpus Christi	MUN	27.54	27.48	26.58	31.38	35.52	34.44	28.20	27.48	26.16	27.42	27.18	27.72	\$ 28.93
Dallas	ATM	30.89	29.39	28.79	29.78	31.58	34.78	35.38	36.58	38.08	38.59	36.32	35.82	\$ 33.83
El Paso	TGS	24.44	23.74	24.99	27.67	29.84	30.95	28.32	25.76	28.59	25.53	27.00	30.49	\$ 27.28
Ft. Worth	ATM	31.00	29.50	28.90	29.89	31.69	34.78	35.38	36.58	38.08	38.59	36.32	35.82	\$ 33.88
Galveston	TGS	28.49	27.96	28.64	32.42	34.71	34.09	32.81	32.05	31.78	34.93	36.25	37.55	\$ 32.64
Houston	CEE	41.63	42.24	42.24	42.24	47.09	47.08	47.08	39.18	39.18	39.19	39.20	39.21	\$ 42.13
Laredo	CEE	31.67	32.08	32.08	32.08	36.34	36.34	36.33	33.08	33.08	33.08	33.09	33.10	\$ 33.53
Lubbock	ATW	20.52	22.38	24.60	29.82	31.02	31.08	30.72	28.50	28.20	28.92	30.18	28.62	\$ 27.88
McAllen	TGS	23.21	22.76	23.28	26.25	28.42	27.83	24.65	23.96	22.63	22.45	22.92	24.74	\$ 24.43
Midland	ATW	20.52	22.38	24.60	29.82	31.02	31.08	30.72	28.50	28.20	28.92	30.18	28.62	\$ 27.88
Odessa	ATW	20.52	22.38	24.60	29.82	31.02	31.08	30.72	28.50	28.20	28.92	30.18	28.62	\$ 27.88
San Angelo	ATM	31.00	29.50	28.90	29.89	31.69	34.78	35.38	36.58	38.08	38.59	36.32	35.82	\$ 33.88
San Antonio *	MUN	27.84	27.08	28.20	33.65	27.76	32.75	29.90	24.21	26.20	22.82	23.18	25.64	\$ 27.60
Sherman	ATM	31.00	29.50	28.90	29.89	31.69	34.78	35.38	36.58	38.08	38.59	36.32	35.82	\$ 33.88
Temple	ATM	31.00	29.50	28.90	29.89	31.69	34.78	35.38	36.58	38.08	38.59	36.32	35.82	\$ 33.88
Texarkana	CEA	35.72	35.72	35.72	40.78	40.78	40.78	40.78	40.78	40.78	40.78	36.73	36.73	\$ 38.84
Tyler	CEE	25.02	25.02	22.37	22.37	27.20	27.20	27.20	27.20	22.57	22.57	22.57	22.57	\$ 24.49
Waco	ATM	31.00	29.50	28.90	29.89	31.69	34.78	35.38	36.58	38.08	38.59	36.32	35.82	\$ 33.88
Wichita Falls	ATM	31.00	29.50	28.90	29.89	31.69	34.78	35.38	36.58	38.08	38.59	36.32	35.82	\$ 33.88
Average		\$ 28.90	\$ 28.56	\$ 28.76	\$ 31.10	\$ 33.30	\$ 34.57	\$ 33.78	\$ 32.93	\$ 33.00	\$ 33.22	\$ 32.65	\$ 33.01	\$ 31.96
Quarter Average				\$ 28.74			\$ 32.99			\$ 33.24			\$ 32.96	

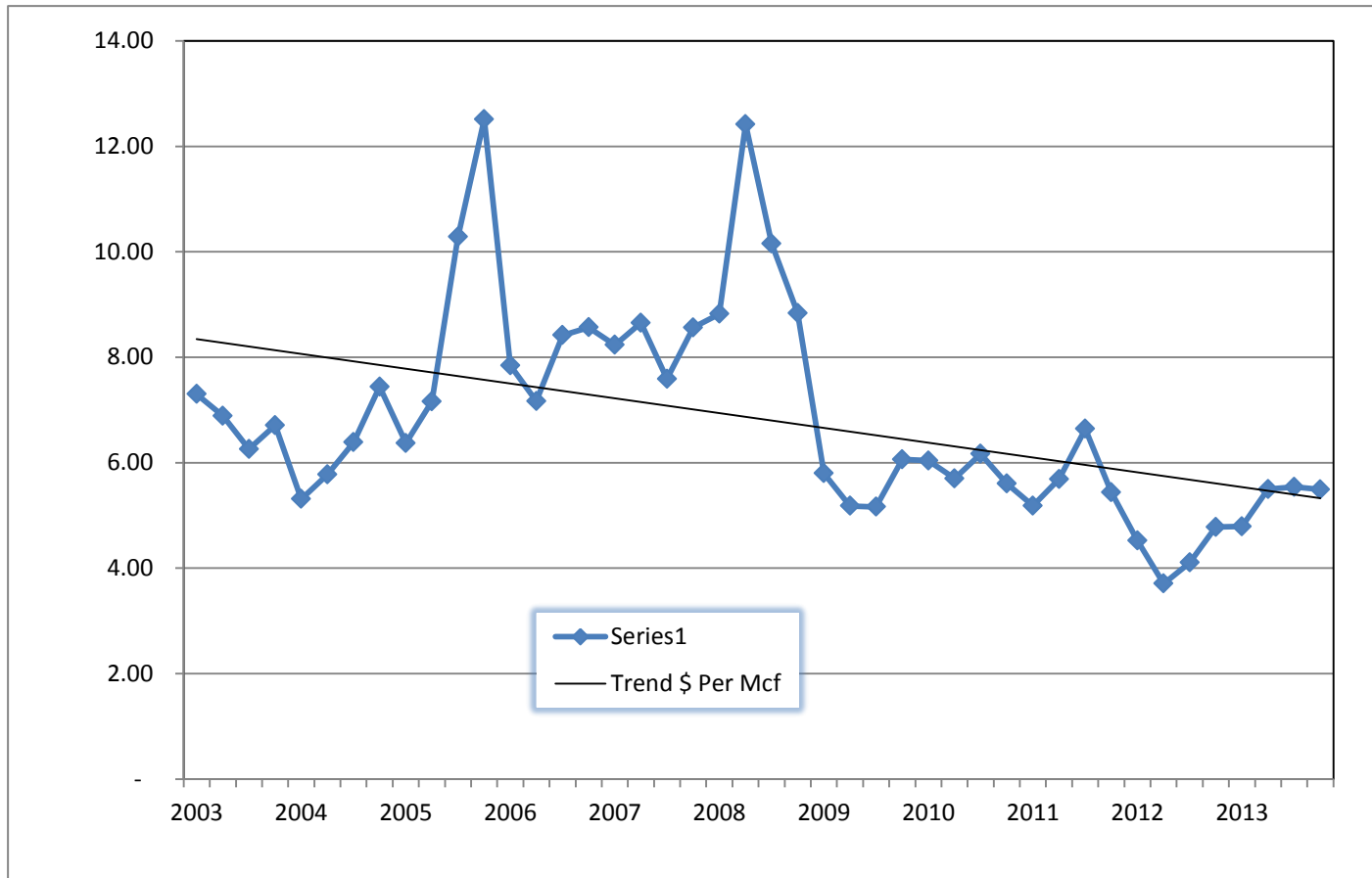
* The City of San Antonio includes a \$2.20 per Mcf Base Cost of Gas in the base rates, i.e., For comparison, the \$2.20 per Mcf Base Cost of gas is removed from the Cost of Service Base Rates and included in the Cost of gas Calculations.

The Cost of Gas shown above is the Purchased Gas Adjustment (PGA) or Gas Cost Adjustment (GCA) as it is filed with the Railroad Commission of Texas as required by Statute and Commission rule. Municipal rates are obtained from the respective municipality.

**TABLE 3a - TWENTY-FIVE TEXAS CITIES
SIX MCF RESIDENTIAL GAS BILL
COST OF GAS**



**TABLE 3b - TWENTY-FIVE TEXAS CITIES
SIX MCF RESIDENTIAL GAS BILL
COST OF GAS**



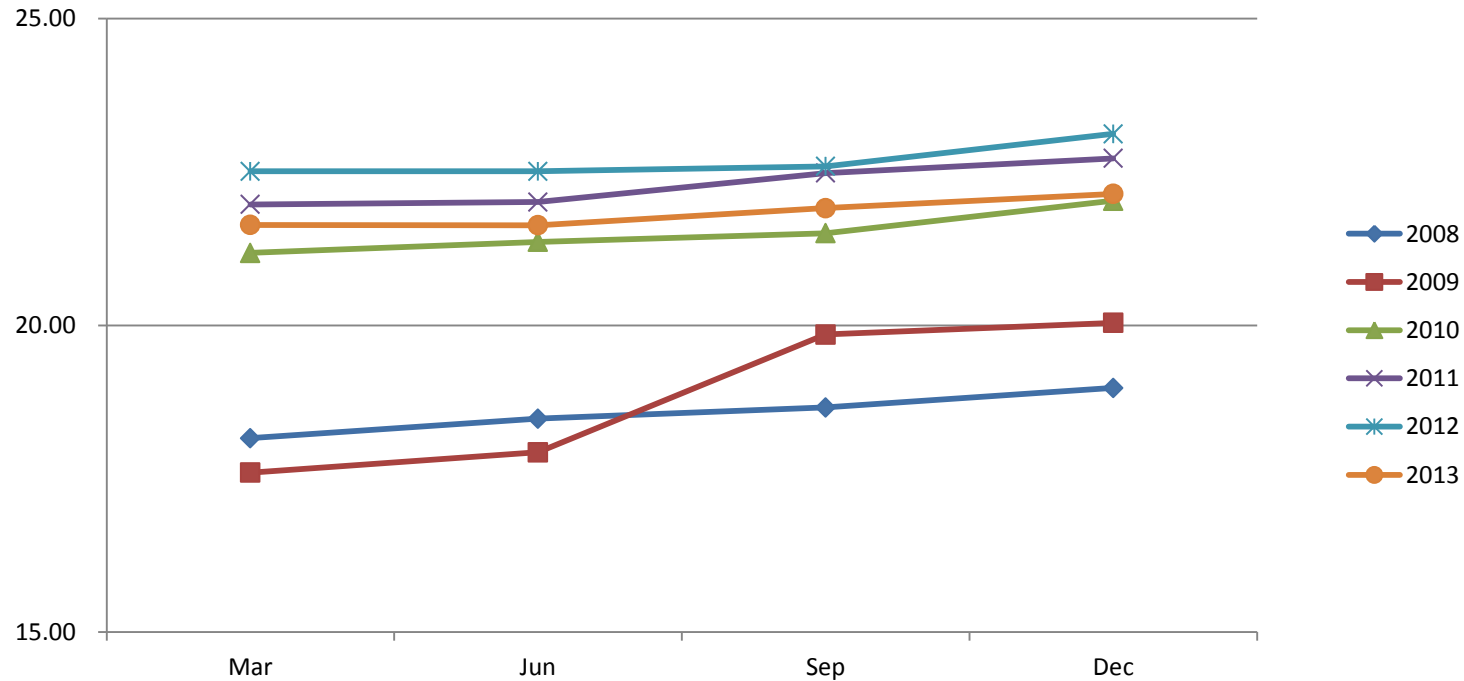
**TABLE 4 - TWENTY-FIVE TEXAS CITIES
SIX MCF RESIDENTIAL GAS BILL
COST OF SERVICE**

City	Gas Utility	Jan-13	Feb-13	Mar-13	Apr-13	May-13	Jun-13	Jul-13	Aug-13	Sep-13	Oct-13	Nov-13	Dec-13	Average
Abilene	ATM	\$ 20.20	\$ 20.20	\$ 20.20	\$ 20.20	\$ 20.20	\$ 20.20	\$ 20.20	\$ 20.20	\$ 20.20	\$ 20.20	\$ 21.22	\$ 21.22	\$ 20.37
Amarillo	ATW	18.03	18.03	18.03	18.03	18.03	18.03	18.03	18.03	18.03	18.03	18.03	18.03	\$ 18.03
Austin	TGS	14.70	14.70	14.70	14.70	14.70	13.32	13.32	13.32	13.32	13.32	13.32	13.32	\$ 13.90
Beaumont	CEE	23.58	23.58	23.58	23.58	23.58	23.58	23.58	23.58	23.58	23.58	23.58	23.58	\$ 23.58
Brownsville	TGS	13.73	13.73	13.73	13.73	13.73	13.73	13.73	14.08	14.08	14.08	14.08	14.08	\$ 13.87
Bryan	ATM	20.20	20.20	20.20	20.20	20.20	20.20	20.20	20.20	20.20	20.20	21.22	21.22	\$ 20.37
Corpus Christi	MUN	30.25	30.25	30.25	30.25	30.25	30.25	30.25	30.25	30.25	30.25	30.25	30.25	\$ 30.25
Dallas	ATM	19.74	19.74	19.74	19.74	19.74	20.68	20.68	20.68	20.68	20.68	20.68	20.68	\$ 20.29
El Paso	TGS	10.80	10.80	10.80	10.80	10.80	10.80	13.07	13.07	13.07	13.07	13.07	13.07	\$ 11.94
Ft. Worth	ATM	20.20	20.20	20.20	20.20	20.20	20.20	20.20	20.20	20.20	20.20	21.22	21.22	\$ 20.37
Galveston	TGS	28.24	28.24	28.24	28.24	28.24	28.24	28.24	28.24	28.24	28.24	28.24	28.24	\$ 28.24
Houston	CEE	16.32	16.32	16.32	16.32	16.32	16.32	17.14	17.14	17.14	17.14	17.14	17.14	\$ 16.73
Laredo	CEE	28.36	28.36	28.36	28.36	28.36	28.36	29.97	29.97	29.97	29.97	29.97	29.97	\$ 29.17
Lubbock	ATW	19.01	19.01	19.01	19.01	19.01	19.01	19.01	19.01	19.01	19.01	19.01	19.01	\$ 19.01
McAllen	TGS	36.05	36.05	36.05	36.05	36.05	36.05	36.05	39.52	39.52	39.52	39.52	39.52	\$ 37.50
Midland	ATW	21.07	21.07	21.07	21.07	21.07	21.07	21.07	21.07	21.07	21.07	21.07	21.07	\$ 21.07
Odessa	ATW	21.07	21.07	21.07	21.07	21.07	21.07	21.07	21.07	21.07	21.07	21.07	21.07	\$ 21.07
San Angelo	ATM	20.53	20.53	20.53	20.53	20.53	20.53	20.53	20.53	20.53	20.53	21.22	21.22	\$ 20.64
San Antonio *	MUN	24.07	24.07	24.07	24.07	24.07	24.07	24.07	24.07	24.07	24.07	24.07	24.07	\$ 24.07
Sherman	ATM	20.20	20.20	20.20	20.20	20.20	20.20	20.20	20.20	20.20	20.20	21.22	21.22	\$ 20.37
Temple	ATM	20.20	20.20	20.20	20.20	20.20	20.20	20.20	20.20	20.20	20.20	21.22	21.22	\$ 20.37
Texarkana	CEA	30.54	30.54	30.54	30.54	30.54	30.54	30.54	30.54	30.54	30.54	30.54	30.54	\$ 30.54
Tyler	CEE	23.43	23.43	23.43	23.43	23.43	23.43	23.43	23.43	23.43	23.43	23.43	23.43	\$ 23.43
Waco	ATM	20.20	20.20	20.20	20.20	20.20	20.20	20.20	20.20	20.20	20.20	21.22	21.22	\$ 20.37
Wichita Falls	ATM	20.20	20.20	20.20	20.20	20.20	20.20	20.20	20.20	20.20	20.20	21.22	21.22	\$ 20.37
Average		\$ 21.64	\$ 21.64	\$ 21.64	\$ 21.64	\$ 21.64	\$ 21.62	\$ 21.81	\$ 21.96	\$ 21.96	\$ 21.96	\$ 22.27	\$ 22.20	\$ 21.84
Quarter Average			\$ 21.64			\$ 21.63		\$ 21.91			\$ 22.14			

* The City of San Antonio includes a \$2.20 per Mcf Base Cost of Gas in the base rates, i.e., For comparison, the \$2.20 per Mcf Base Cost of gas is removed from the Cost of Service Base Rates and included in the Cost of gas Calculations.

The Cost of Service shown above is the customer charge and commodity (Per Mcf or Ccf) charge. It is the cost to the utility to provide service, excluding gas cost. Municipal rates are obtained from the respective municipality.

**TABLE 4a - TWENTY-FIVE TEXAS CITIES
SIX MCF RESIDENTIAL GAS BILL
COST OF SERVICE BY QUARTER**



The data points for the first two quarters of 2012 and 2013 are nearly identical, resulting in the overlap of points.