

SIX MCF RESIDENTIAL GAS BILL ANALYSIS FOR TWENTY-FIVE TEXAS CITIES



GAS SERVICES DIVISION

January through December 2005

Table of Contents

Introduction	Page 1
Table 1 - Total Bill	Page 2
Chart 1a - Total Bill	Page 3
Table 2 - Analysis of Gas Bill	Pages 4-5
Table 3 - Cost of Gas	Page 6
Chart 3a & 3b - Cost of Gas	Pages 7-8
Table 4 - Analysis of Cost of Gas	Pages 9-10
Table 5 - Cost of Service	Page 11
Table 5a - Cost of Service	Page 12

Introduction

Included within are five tables reflecting an analysis of a 6 Mcf gas bill for twenty-five Texas cities. These cities provide a geographic representation of the State.

Six Mcf reflects the approximate monthly average consumption of gas on an annual basis for the state, and is used in each table as a basis for comparison.

All other items such as penalties, taxes, applicable city fees, etc., normally included in a gross bill are excluded.

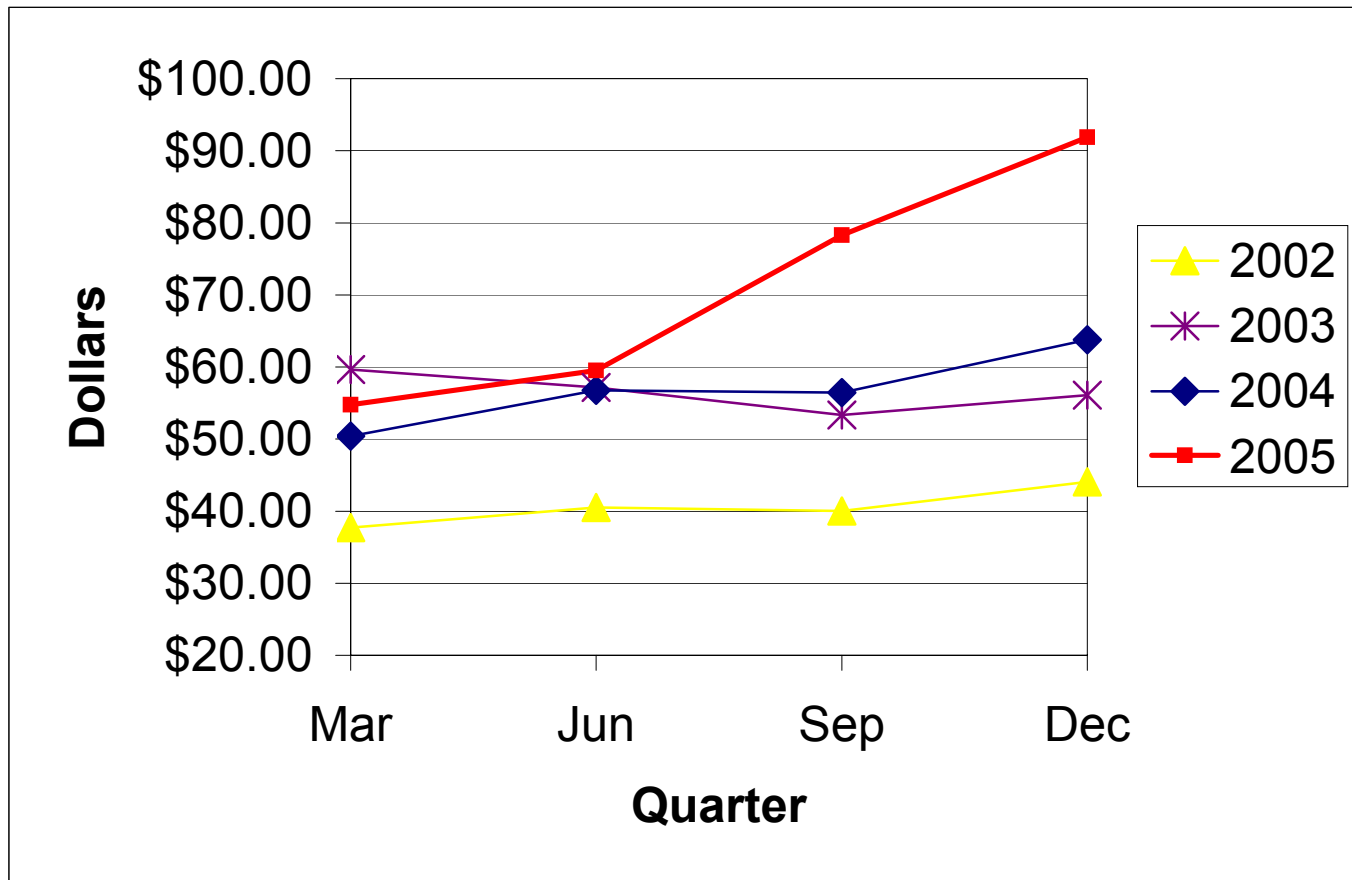
During 2005, new rates were approved for the following municipality:

The City of Corpus Christi - effective August 1, 2005.

**TABLE 1 - TWENTY FIVE TEXAS CITIES
SIX MCF RESIDENTIAL GAS BILL
TOTAL BILL
(Cost of Gas Plus Cost of Service)**

CITY	GAS CO.	JAN 05	FEB 05	MAR 05	APR 05	MAY 05	JUN 05	JUL 05	AUG 05	SEP 05	OCT 05	NOV 05	DEC 05
Abilene	TXU	67.93	47.18	47.18	51.64	56.65	56.65	67.95	70.08	75.41	109.93	109.93	109.93
Amarillo	ATM	52.89	51.51	51.42	58.01	56.75	55.24	58.26	59.18	76.26	87.62	67.63	72.00
Austin	TGS	60.56	60.32	61.33	67.18	65.85	63.22	68.81	64.03	84.86	92.57	96.40	74.69
Beaumont	CCE	74.35	60.84	60.84	60.84	60.84	60.84	60.84	60.84	81.10	90.73	109.69	109.69
Brownsville	TGS	52.42	52.27	53.84	58.39	57.23	54.92	60.43	56.11	76.07	82.31	85.39	63.73
Bryan	TXU	67.93	47.18	47.18	51.64	56.65	56.65	67.95	70.08	75.41	109.93	109.93	109.93
Corpus Christi	MUN	63.55	61.69	65.53	74.17	75.55	73.93	78.91	84.16	99.34	95.56	99.28	80.08
Dallas	TXU	59.02	58.78	59.79	65.64	64.31	56.65	67.95	70.08	75.41	109.93	109.93	109.93
El Paso	TGS	49.50	47.74	48.25	52.94	55.26	48.62	52.53	51.97	62.30	65.54	78.55	64.97
Fort Worth	TXU	67.93	47.18	47.18	51.64	56.65	56.65	67.95	70.08	75.41	109.93	109.93	109.93
Galveston	TGS	66.66	66.48	67.99	73.51	72.11	69.30	74.27	69.02	87.75	92.60	100.69	77.59
Houston	CEE	71.51	60.04	60.04	60.04	78.13	78.13	78.13	78.13	78.13	87.23	87.23	87.23
Laredo	CEE	72.29	59.39	59.39	59.39	59.39	59.39	59.39	59.39	86.26	98.72	114.24	114.24
Lubbock	ATM	53.53	54.43	55.27	59.95	51.31	54.19	59.23	61.27	73.15	86.77	82.39	83.35
McAllen	TGS	53.02	52.87	54.44	58.99	57.83	55.52	61.03	56.71	76.67	82.72	85.39	64.23
Midland	ATM	50.34	51.12	50.22	56.76	53.34	54.06	58.20	61.14	73.02	85.14	88.32	81.84
Odessa	ATM	51.48	51.60	51.24	57.96	51.66	52.86	55.50	57.36	70.68	77.70	86.94	67.86
San Angelo	TXU	67.93	47.18	47.18	51.64	56.65	56.65	67.95	70.08	75.41	109.93	109.93	109.93
San Antonio	MUN	59.35	55.57	61.56	66.26	64.03	58.96	63.65	68.38	87.64	88.97	97.48	73.92
Sherman	TXU	67.93	47.18	47.18	51.64	56.65	56.65	67.95	70.08	75.41	109.93	109.93	109.93
Temple	TXU	67.93	47.18	47.18	51.64	56.65	56.65	67.95	70.08	75.41	109.93	109.93	109.93
Texarkana	CEA	79.06	72.73	72.73	80.57	80.57	80.57	80.57	80.57	80.57	80.57	88.49	88.49
Tyler	CEE	71.83	57.95	57.95	57.95	57.95	57.95	57.95	57.95	84.90	98.84	98.84	98.84
Waco	TXU	67.93	47.18	47.18	51.64	56.65	56.65	67.95	70.08	75.41	109.93	109.93	109.93
Wichita Falls	TXU	67.93	47.18	47.18	51.64	56.65	56.65	67.95	70.08	75.41	109.93	109.93	109.93
Average		63.3920	54.1108	54.7708	59.2668	60.6124	59.5020	65.5700	66.2772	78.2956	95.3184	98.2528	91.6848

CHART 1a - TWENTY-FIVE TEXAS CITIES
SIX MCF RESIDENTIAL GAS BILL
TOTAL BILL



**TABLE 2 - TWENTY FIVE TEXAS CITIES
SIX MCF RESIDENTIAL GAS BILL
ANALYSIS OF GAS BILL**

CITY	GAS CO.	Jan-05			Feb-05			Mar-05			Apr-05			May-05			Jun-05		
		A	B	C	A	B	C	A	B	C	A	B	C	A	B	C	A	B	C
Abilene	TXU	15.68	52.25	67.93	15.68	31.50	47.18	15.68	31.50	47.18	15.68	35.96	51.64	15.68	40.97	56.65	15.68	40.97	56.65
Amarillo	ATM	13.96	38.93	52.89	13.96	37.55	51.51	13.96	37.46	51.42	13.96	44.05	58.01	13.96	42.79	56.75	13.96	41.28	55.24
Austin	TGS	17.22	43.34	60.56	17.22	43.10	60.32	17.22	44.11	61.33	17.22	49.96	67.18	17.22	48.63	65.85	17.22	46.00	63.22
Beaumont	CEE	16.97	57.38	74.35	16.97	43.87	60.84	16.97	43.87	60.84	16.97	43.87	60.84	16.97	43.87	60.84	16.97	43.87	60.84
Brownsville	TGS	15.72	36.70	52.42	15.72	36.55	52.27	15.72	38.12	53.84	15.72	42.67	58.39	15.72	41.51	57.23	15.72	39.20	54.92
Bryan	TXU	15.68	52.25	67.93	15.68	31.50	47.18	15.68	31.50	47.18	15.68	35.96	51.64	15.68	40.97	56.65	15.68	40.97	56.65
Corpus Christi	MUN	25.63	37.92	63.55	25.63	36.06	61.69	25.63	39.90	65.53	25.63	48.54	74.17	25.63	49.92	75.55	25.63	48.30	73.93
Dallas	TXU	15.68	43.34	59.02	15.68	43.10	58.78	15.68	44.11	59.79	15.68	49.96	65.64	15.68	48.63	64.31	15.68	40.97	56.65
El Paso	TGS	13.22	36.28	49.50	13.22	34.52	47.74	13.22	35.03	48.25	13.22	39.72	52.94	13.22	42.04	55.26	13.22	35.40	48.62
Fort Worth	TXU	15.68	52.25	67.93	15.68	31.50	47.18	15.68	31.50	47.18	15.68	35.96	51.64	15.68	40.97	56.65	15.68	40.97	56.65
Galveston	TGS	18.92	47.74	66.66	18.92	47.56	66.48	18.92	49.07	67.99	18.92	54.59	73.51	18.92	53.19	72.11	18.92	50.38	69.30
Houston	CEE	13.26	58.25	71.51	13.26	46.78	60.04	13.26	46.78	60.04	13.26	46.78	60.04	13.26	64.87	78.13	13.26	64.87	78.13
Laredo	CEE	16.85	55.44	72.29	16.85	42.54	59.39	16.85	42.54	59.39	16.85	42.54	59.39	16.85	42.54	59.39	16.85	42.54	59.39
Lubbock	ATM	15.25	38.28	53.53	15.25	39.18	54.43	15.25	40.02	55.27	15.25	44.70	59.95	15.25	36.06	51.31	15.25	38.94	54.19
McAllen	TGS	15.72	37.30	53.02	15.72	37.15	52.87	15.72	38.72	54.44	15.72	43.27	58.99	15.72	42.11	57.83	15.72	39.80	55.52
Midland	ATM	15.12	35.22	50.34	15.12	36.00	51.12	15.12	35.10	50.22	15.12	41.64	56.76	15.12	38.22	53.34	15.12	38.94	54.06
Odessa	ATM	15.12	36.36	51.48	15.12	36.48	51.60	15.12	36.12	51.24	15.12	42.84	57.96	15.12	36.54	51.66	15.12	37.74	52.86
San Angelo	TXU	15.68	52.25	67.93	15.68	31.50	47.18	15.68	31.50	47.18	15.68	35.96	51.64	15.68	40.97	56.65	15.68	40.97	56.65
San Antonio	MUN	16.93	42.42	59.35	16.93	38.64	55.57	16.93	44.63	61.56	16.93	49.33	66.26	16.93	47.10	64.03	16.93	42.03	58.96
Sherman	TXU	15.68	52.25	67.93	15.68	31.50	47.18	15.68	31.50	47.18	15.68	35.96	51.64	15.68	40.97	56.65	15.68	40.97	56.65
Temple	TXU	15.68	52.25	67.93	15.68	31.50	47.18	15.68	31.50	47.18	15.68	35.96	51.64	15.68	40.97	56.65	15.68	40.97	56.65
Texarkana	CEA	24.75	54.31	79.06	24.75	47.98	72.73	24.75	47.98	72.73	24.75	55.82	80.57	24.75	55.82	80.57	24.75	55.82	80.57
Tyler	CEE	17.85	53.98	71.83	17.85	40.10	57.95	17.85	40.10	57.95	17.85	40.10	57.95	17.85	40.10	57.95	17.85	40.10	57.95
Waco	TXU	15.68	52.25	67.93	15.68	31.50	47.18	15.68	31.50	47.18	15.68	35.96	51.64	15.68	40.97	56.65	15.68	40.97	56.65
Wichita Falls	TXU	15.68	52.25	67.93	15.68	31.50	47.18	15.68	31.50	47.18	15.68	35.96	51.64	15.68	40.97	56.65	15.68	40.97	56.65
Average		16.54	46.85	63.39	16.54	37.57	54.11	16.54	38.23	54.77	16.54	42.72	59.27	16.54	44.07	60.61	16.54	42.96	59.50

A-COST OF SERVICE (EXCLUDING COST OF GAS)

B-COST OF GAS (INCLUDES COST OF GAS IN BASE PLUS COST OF GAS ADJUSTMENT)

C-TOTAL BILL (TOTAL COST OF GAS PLUS COST OF SERVICE)

**TABLE 2 - TWENTY FIVE TEXAS CITIES
SIX MCF RESIDENTIAL GAS BILL
ANALYSIS OF GAS BILL**

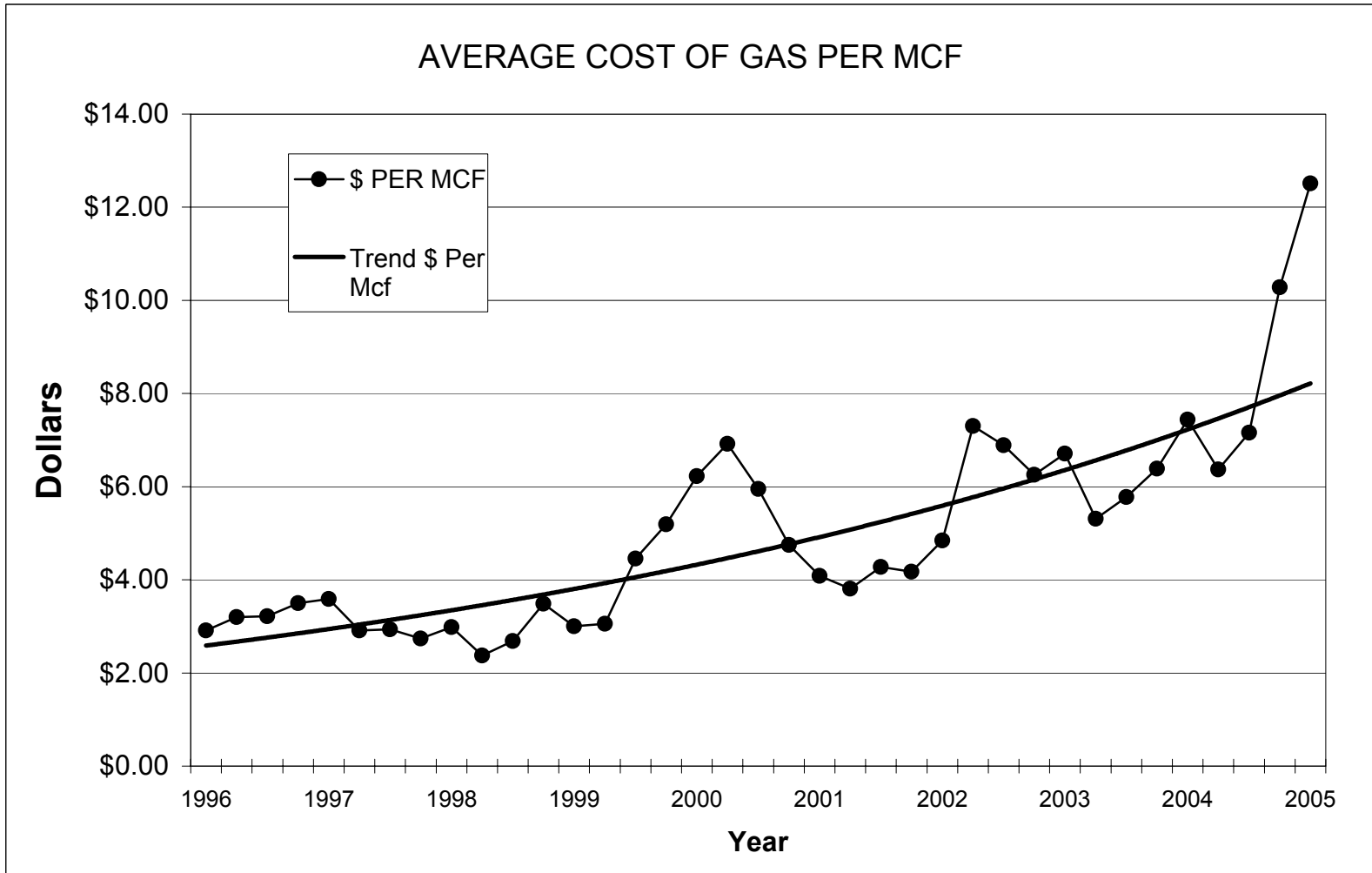
Jul-05			Aug-05			Sep-05			Oct-05			Nov-05			Dec-05			GAS CO. CITY	
A	B	C	A	B	C	A	B	C	A	B	C	A	B	C	A	B	C		
15.68	52.27	67.95	15.68	54.40	70.08	15.68	59.73	75.41	15.68	94.25	109.93	15.68	94.25	109.93	15.68	94.25	109.93	TXU	Abilene
13.96	44.30	58.26	13.96	45.22	59.18	13.96	62.30	76.26	13.96	73.66	87.62	13.96	53.67	67.63	13.96	58.04	72.00	ATM	Amarillo
17.22	51.59	68.81	17.22	46.81	64.03	17.22	67.64	84.86	17.22	75.35	92.57	17.22	79.18	96.40	17.22	57.47	74.69	TGS	Austin
16.97	43.87	60.84	16.97	43.87	60.84	16.97	64.13	81.10	16.97	73.76	90.73	16.97	92.72	109.69	16.97	92.72	109.69	CEE	Beaumont
15.72	44.71	60.43	15.72	40.39	56.11	15.72	60.35	76.07	15.72	66.59	82.31	15.72	69.67	85.39	15.72	48.01	63.73	TGS	Brownsville
15.68	52.27	67.95	15.68	54.40	70.08	15.68	59.73	75.41	15.68	94.25	109.93	15.68	94.25	109.93	15.68	94.25	109.93	TXU	Bryan
25.63	53.28	78.91	27.10	57.06	84.16	27.10	72.24	99.34	27.10	68.46	95.56	27.10	72.18	99.28	27.10	52.98	80.08	MUN	Corpus Christi
15.68	52.27	67.95	15.68	54.40	70.08	15.68	59.73	75.41	15.68	94.25	109.93	15.68	94.25	109.93	15.68	94.25	109.93	TXU	Dallas
13.22	39.31	52.53	13.22	38.75	51.97	13.22	49.08	62.30	13.22	52.32	65.54	13.22	65.33	78.55	13.22	51.75	64.97	TGS	El Paso
15.68	52.27	67.95	15.68	54.40	70.08	15.68	59.73	75.41	15.68	94.25	109.93	15.68	94.25	109.93	15.68	94.25	109.93	TXU	Fort Worth
18.92	55.35	74.27	18.92	50.10	69.02	18.92	68.83	87.75	18.92	73.68	92.60	18.92	81.77	100.69	18.92	58.67	77.59	TGS	Galveston
13.26	64.87	78.13	13.26	64.87	78.13	13.26	64.87	78.13	13.26	73.97	87.23	13.26	73.97	87.23	13.26	73.97	87.23	CEE	Houston
16.85	42.54	59.39	16.85	42.54	59.39	16.85	69.41	86.26	16.85	81.87	98.72	16.85	97.39	114.24	16.85	97.39	114.24	CEE	Laredo
15.25	43.98	59.23	15.25	46.02	61.27	15.25	57.90	73.15	15.25	71.52	86.77	15.25	67.14	82.39	15.25	68.10	83.35	ATM	Lubbock
15.72	45.31	61.03	15.72	40.99	56.71	15.72	60.95	76.67	15.72	67.00	82.72	15.72	69.67	85.39	15.72	48.51	64.23	TGS	McAllen
15.12	43.08	58.20	15.12	46.02	61.14	15.12	57.90	73.02	15.12	70.02	85.14	15.12	73.20	88.32	15.12	66.72	81.84	ATM	Midland
15.12	40.38	55.50	15.12	42.24	57.36	15.12	55.56	70.68	15.12	62.58	77.70	15.12	71.82	86.94	15.12	52.74	67.86	ATM	Odessa
15.68	52.27	67.95	15.68	54.40	70.08	15.68	59.73	75.41	15.68	94.25	109.93	15.68	94.25	109.93	15.68	94.25	109.93	TXU	San Angelo
16.93	46.72	63.65	16.93	51.45	68.38	16.93	70.71	87.64	16.93	72.04	88.97	16.93	80.55	97.48	16.93	56.99	73.92	MUN	San Antonio
15.68	52.27	67.95	15.68	54.40	70.08	15.68	59.73	75.41	15.68	94.25	109.93	15.68	94.25	109.93	15.68	94.25	109.93	TXU	Sherman
15.68	52.27	67.95	15.68	54.40	70.08	15.68	59.73	75.41	15.68	94.25	109.93	15.68	94.25	109.93	15.68	94.25	109.93	TXU	Temple
24.75	55.82	80.57	24.75	55.82	80.57	24.75	55.82	80.57	24.75	55.82	80.57	24.75	63.74	88.49	24.75	63.74	88.49	CEA	Texarkana
17.85	40.10	57.95	17.85	40.10	57.95	17.85	67.05	84.90	17.85	80.99	98.84	17.85	80.99	98.84	17.85	80.99	98.84	CEE	Tyler
15.68	52.27	67.95	15.68	54.40	70.08	15.68	59.73	75.41	15.68	94.25	109.93	15.68	94.25	109.93	15.68	94.25	109.93	TXU	Waco
15.68	52.27	67.95	15.68	54.40	70.08	15.68	59.73	75.41	15.68	94.25	109.93	15.68	94.25	109.93	15.68	94.25	109.93	TXU	Wichita Falls
16.54	49.03	65.57	16.60	49.67	66.28	16.60	61.69	78.30	16.60	78.72	95.32	16.60	81.65	98.25	16.60	75.08	91.68		Average

**TABLE 3 - TWENTY FIVE TEXAS CITIES
SIX MCF RESIDENTIAL GAS BILL
***COST OF GAS
(EXCLUDING COST OF SERVICE)**

CITY	GAS CO.	JAN 05	FEB 05	MAR 05	APR 05	MAY 05	JUN 05	JUL 05	AUG 05	SEP 05	OCT 05	NOV 05	DEC 05
Abilene	TXU	52.25	31.50	31.50	35.96	40.97	40.97	52.27	54.40	59.73	94.25	94.25	94.25
Amarillo	ATM	38.93	37.55	37.46	44.05	42.79	41.28	44.30	45.22	62.30	73.66	53.67	58.04
Austin	TGS	43.34	43.10	44.11	49.96	48.63	46.00	51.59	46.81	67.64	75.35	79.18	57.47
Beaumont	CEE	57.38	43.87	43.87	43.87	43.87	43.87	43.87	43.87	64.13	73.76	92.72	92.72
Brownsville	TGS	36.70	36.55	38.12	42.67	41.51	39.20	44.71	40.39	60.35	66.59	69.67	48.01
Bryan	TXU	52.25	31.50	31.50	35.96	40.97	40.97	52.27	54.40	59.73	94.25	94.25	94.25
Corpus Christi	MUN	37.92	36.06	39.90	48.54	49.92	48.30	53.28	57.06	72.24	68.46	72.18	52.98
Dallas	TXU	43.34	43.10	44.11	49.96	48.63	40.97	52.27	54.40	59.73	94.25	94.25	94.25
El Paso	TGS	36.28	34.52	35.03	39.72	42.04	35.40	39.31	38.75	49.08	52.32	65.33	51.75
Fort Worth	TXU	52.25	31.50	31.50	35.96	40.97	40.97	52.27	54.40	59.73	94.25	94.25	94.25
Galveston	TGS	47.74	47.56	49.07	54.59	53.19	50.38	55.35	50.10	68.83	73.68	81.77	58.67
Houston	CEE	58.25	46.78	46.78	46.78	64.87	64.87	64.87	64.87	64.87	73.97	73.97	73.97
Laredo	CEE	55.44	42.54	42.54	42.54	42.54	42.54	42.54	42.54	69.41	81.87	97.39	97.39
Lubbock	ATM	38.28	39.18	40.02	44.70	36.06	38.94	43.98	46.02	57.90	71.52	67.14	68.10
McAllen	TGS	37.30	37.15	38.72	43.27	42.11	39.80	45.31	40.99	60.95	67.00	69.67	48.51
Midland	ATM	35.22	36.00	35.10	41.64	38.22	38.94	43.08	46.02	57.90	70.02	73.20	66.72
Odessa	ATM	36.36	36.48	36.12	42.84	36.54	37.74	40.38	42.24	55.56	62.58	71.82	52.74
San Angelo	TXU	52.25	31.50	31.50	35.96	40.97	40.97	52.27	54.40	59.73	94.25	94.25	94.25
San Antonio	MUN	42.42	38.64	44.63	49.33	47.10	42.03	46.72	51.45	70.71	72.04	80.55	56.99
Sherman	TXU	52.25	31.50	31.50	35.96	40.97	40.97	52.27	54.40	59.73	94.25	94.25	94.25
Temple	TXU	52.25	31.50	31.50	35.96	40.97	40.97	52.27	54.40	59.73	94.25	94.25	94.25
Texarkana	CEA	54.31	47.98	47.98	55.82	55.82	55.82	55.82	55.82	55.82	55.82	63.74	63.74
Tyler	CEE	53.98	40.10	40.10	40.10	40.10	40.10	40.10	40.10	67.05	80.99	80.99	80.99
Waco	TXU	52.25	31.50	31.50	35.96	40.97	40.97	52.27	54.40	59.73	94.25	94.25	94.25
Wichita Falls	TXU	52.25	31.50	31.50	35.96	40.97	40.97	52.27	54.40	59.73	94.25	94.25	94.25
Average		46.85	37.57	38.23	42.72	44.07	42.96	49.03	49.67	61.69	78.72	81.65	75.08

***INCLUDES COST OF GAS IN BASE RATE PLUS COST OF GAS ADJUSTMENT.

**TWENTY-FIVE TEXAS CITIES
SIX MCF RESIDENTIAL GAS BILL
COST OF GAS**



**TABLE 4 - TWENTY FIVE TEXAS CITIES
SIX MCF RESIDENTIAL GAS BILL
ANALYSIS OF COST OF GAS**

CITY	GAS CO.	Jan-05			Feb-05			Mar-05			Apr-05			May-05			Jun-05		
		A	B	C	A	B	C	A	B	C	A	B	C	A	B	C	A	B	C
Abilene	TXU	0.00	52.25	52.25	0.00	31.50	31.50	0.00	31.50	31.50	0.00	35.96	35.96	0.00	40.97	40.97	0.00	40.97	40.97
Amarillo	ATM	0.00	38.93	38.93	0.00	37.55	37.55	0.00	37.46	37.46	0.00	44.05	44.05	0.00	42.79	42.79	0.00	41.28	41.28
Austin	TGS	0.00	43.34	43.34	0.00	43.10	43.10	0.00	44.11	44.11	0.00	49.96	49.96	0.00	48.63	48.63	0.00	46.00	46.00
Beaumont	CEE	20.40	36.98	57.38	20.40	23.47	43.87	20.40	23.47	43.87	20.40	23.47	43.87	20.40	23.47	43.87	20.40	23.47	43.87
Brownsville	TGS	0.00	36.70	36.70	0.00	36.55	36.55	0.00	38.12	38.12	0.00	42.67	42.67	0.00	41.51	41.51	0.00	39.20	39.20
Bryan	TXU	0.00	52.25	52.25	0.00	31.50	31.50	0.00	31.50	31.50	0.00	35.96	35.96	0.00	40.97	40.97	0.00	40.97	40.97
Corpus Christi	MUN	0.00	37.92	37.92	0.00	36.06	36.06	0.00	39.90	39.90	0.00	48.54	48.54	0.00	49.92	49.92	0.00	48.30	48.30
Dallas	TXU	0.00	43.34	43.34	0.00	43.10	43.10	0.00	44.11	44.11	0.00	49.96	49.96	0.00	48.63	48.63	0.00	40.97	40.97
El Paso	TGS	0.00	36.28	36.28	0.00	34.52	34.52	0.00	35.03	35.03	0.00	39.72	39.72	0.00	42.04	42.04	0.00	35.40	35.40
Fort Worth	TXU	0.00	52.25	52.25	0.00	31.50	31.50	0.00	31.50	31.50	0.00	35.96	35.96	0.00	40.97	40.97	0.00	40.97	40.97
Galveston	TGS	0.00	47.74	47.74	0.00	47.56	47.56	0.00	49.07	49.07	0.00	54.59	54.59	0.00	53.19	53.19	0.00	50.38	50.38
Houston	CEE	0.00	58.25	58.25	0.00	46.78	46.78	0.00	46.78	46.78	0.00	46.78	46.78	0.00	64.87	64.87	0.00	64.87	64.87
Laredo	CEE	18.87	36.57	55.44	18.87	23.67	42.54	18.87	23.67	42.54	18.87	23.67	42.54	18.87	23.67	42.54	18.87	23.67	42.54
Lubbock	ATM	0.00	38.28	38.28	0.00	39.18	39.18	0.00	40.02	40.02	0.00	44.70	44.70	0.00	36.06	36.06	0.00	38.94	38.94
McAllen	TGS	0.00	37.30	37.30	0.00	37.15	37.15	0.00	38.72	38.72	0.00	43.27	43.27	0.00	42.11	42.11	0.00	39.80	39.80
Midland	ATM	0.00	35.22	35.22	0.00	36.00	36.00	0.00	35.10	35.10	0.00	41.64	41.64	0.00	38.22	38.22	0.00	38.94	38.94
Odessa	ATM	0.00	36.36	36.36	0.00	36.48	36.48	0.00	36.12	36.12	0.00	42.84	42.84	0.00	36.54	36.54	0.00	37.74	37.74
San Angelo	TXU	0.00	52.25	52.25	0.00	31.50	31.50	0.00	31.50	31.50	0.00	35.96	35.96	0.00	40.97	40.97	0.00	40.97	40.97
San Antonio	MUN	13.20	29.22	42.42	13.20	25.44	38.64	13.20	31.43	44.63	13.20	36.13	49.33	13.20	33.90	47.10	13.20	28.83	42.03
Sherman	TXU	0.00	52.25	52.25	0.00	31.50	31.50	0.00	31.50	31.50	0.00	35.96	35.96	0.00	40.97	40.97	0.00	40.97	40.97
Temple	TXU	0.00	52.25	52.25	0.00	31.50	31.50	0.00	31.50	31.50	0.00	35.96	35.96	0.00	40.97	40.97	0.00	40.97	40.97
Texarkana	CEA	0.00	54.31	54.31	0.00	47.98	47.98	0.00	47.98	47.98	0.00	55.82	55.82	0.00	55.82	55.82	0.00	55.82	55.82
Tyler	CEE	19.65	34.33	53.98	19.65	20.45	40.10	19.65	20.45	40.10	19.65	20.45	40.10	19.65	20.45	40.10	19.65	20.45	40.10
Waco	TXU	0.00	52.25	52.25	0.00	31.50	31.50	0.00	31.50	31.50	0.00	35.96	35.96	0.00	40.97	40.97	0.00	40.97	40.97
Wichita Falls	TXU	0.00	52.25	52.25	0.00	31.50	31.50	0.00	31.50	31.50	0.00	35.96	35.96	0.00	40.97	40.97	0.00	40.97	40.97
Average		2.88	43.96	46.85	2.88	34.68	37.57	2.88	35.34	38.23	2.88	39.84	42.72	2.88	41.18	44.07	2.88	40.07	42.96

A-COST OF GAS INCLUDED IN BASE RATE

B-COST OF GAS ADJUSTMENT

C-TOTAL COST OF GAS

**TABLE 4 - TWENTY FIVE TEXAS CITIES
SIX MCF RESIDENTIAL GAS BILL
ANALYSIS OF COST OF GAS**

Jul-05			Aug-05			Sep-05			Oct-05			Nov-05			Dec-05			GAS CO.	CITY
A	B	C	A	B	C	A	B	C	A	B	C	A	B	C	A	B	C		
0.00	52.27	52.27	0.00	54.40	54.40	0.00	59.73	59.73	0.00	94.25	94.25	0.00	94.25	94.25	0.00	94.25	94.25	TXU	Abilene
0.00	44.30	44.30	0.00	45.22	45.22	0.00	62.30	62.30	0.00	73.66	73.66	0.00	53.67	53.67	0.00	58.04	58.04	ATM	Amarillo
0.00	51.59	51.59	0.00	46.81	46.81	0.00	67.64	67.64	0.00	75.35	75.35	0.00	79.18	79.18	0.00	57.47	57.47	TGS	Austin
20.40	23.47	43.87	20.40	23.47	43.87	20.40	43.73	64.13	20.40	53.36	73.76	20.40	72.32	92.72	20.40	72.32	92.72	CEE	Beaumont
0.00	44.71	44.71	0.00	40.39	40.39	0.00	60.35	60.35	0.00	66.59	66.59	0.00	69.67	69.67	0.00	48.01	48.01	TGS	Brownsville
0.00	52.27	52.27	0.00	54.40	54.40	0.00	59.73	59.73	0.00	94.25	94.25	0.00	94.25	94.25	0.00	94.25	94.25	TXU	Bryan
0.00	53.28	53.28	0.00	57.06	57.06	0.00	72.24	72.24	0.00	68.46	68.46	0.00	72.18	72.18	0.00	52.98	52.98	MUN	Corpus Christi
0.00	52.27	52.27	0.00	54.40	54.40	0.00	59.73	59.73	0.00	94.25	94.25	0.00	94.25	94.25	0.00	94.25	94.25	TXU	Dallas
0.00	39.31	39.31	0.00	38.75	38.75	0.00	49.08	49.08	0.00	52.32	52.32	0.00	65.33	65.33	0.00	51.75	51.75	TGS	El Paso
0.00	52.27	52.27	0.00	54.40	54.40	0.00	59.73	59.73	0.00	94.25	94.25	0.00	94.25	94.25	0.00	94.25	94.25	TXU	Fort Worth
0.00	55.35	55.35	0.00	50.10	50.10	0.00	68.83	68.83	0.00	73.68	73.68	0.00	81.77	81.77	0.00	58.67	58.67	TGS	Galveston
0.00	64.87	64.87	0.00	64.87	64.87	0.00	64.87	64.87	0.00	73.97	73.97	0.00	73.97	73.97	0.00	73.97	73.97	CEE	Houston
18.87	23.67	42.54	18.87	23.67	42.54	18.87	50.54	69.41	18.87	63.00	81.87	18.87	78.52	97.39	18.87	78.52	97.39	CEE	Laredo
0.00	43.98	43.98	0.00	46.02	46.02	0.00	57.90	57.90	0.00	71.52	71.52	0.00	67.14	67.14	0.00	68.10	68.10	ATM	Lubbock
0.00	45.31	45.31	0.00	40.99	40.99	0.00	60.95	60.95	0.00	67.00	67.00	0.00	69.67	69.67	0.00	48.51	48.51	TGS	McAllen
0.00	43.08	43.08	0.00	46.02	46.02	0.00	57.90	57.90	0.00	70.02	70.02	0.00	73.20	73.20	0.00	66.72	66.72	ATM	Midland
0.00	40.38	40.38	0.00	42.24	42.24	0.00	55.56	55.56	0.00	62.58	62.58	0.00	71.82	71.82	0.00	52.74	52.74	ATM	Odessa
0.00	52.27	52.27	0.00	54.40	54.40	0.00	59.73	59.73	0.00	94.25	94.25	0.00	94.25	94.25	0.00	94.25	94.25	TXU	San Angelo
13.20	33.52	46.72	13.20	38.25	51.45	13.20	57.51	70.71	13.20	58.84	72.04	13.20	67.35	80.55	13.20	43.79	56.99	MUN	San Antonio
0.00	52.27	52.27	0.00	54.40	54.40	0.00	59.73	59.73	0.00	94.25	94.25	0.00	94.25	94.25	0.00	94.25	94.25	TXU	Sherman
0.00	52.27	52.27	0.00	54.40	54.40	0.00	59.73	59.73	0.00	94.25	94.25	0.00	94.25	94.25	0.00	94.25	94.25	TXU	Temple
0.00	55.82	55.82	0.00	55.82	55.82	0.00	55.82	55.82	0.00	55.82	55.82	0.00	63.74	63.74	0.00	63.74	63.74	CEA	Texarkana
19.65	20.45	40.10	19.65	20.45	40.10	19.65	47.40	67.05	19.65	61.34	80.99	19.65	61.34	80.99	19.65	61.34	80.99	CEE	Tyler
0.00	52.27	52.27	0.00	54.40	54.40	0.00	59.73	59.73	0.00	94.25	94.25	0.00	94.25	94.25	0.00	94.25	94.25	TXU	Waco
0.00	52.27	52.27	0.00	54.40	54.40	0.00	59.73	59.73	0.00	94.25	94.25	0.00	94.25	94.25	0.00	94.25	94.25	TXU	Wichita Falls
2.88	46.14	49.03	2.88	46.79	49.67	2.88	58.81	61.69	2.88	75.83	78.72	2.88	78.76	81.65	2.88	72.20	75.08		Average

**TABLE 5 - TWENTY FIVE TEXAS CITIES
SIX MCF RESIDENTIAL GAS BILL
COST OF SERVICE
(EXCLUDING COST OF GAS)**

CITY	GAS CO.	JAN 05	FEB 05	MAR 05	APR 05	MAY 05	JUN 05	JUL 05	AUG 05	SEP 05	OCT 05	NOV 05	DEC 05
Abilene	TXU	15.68	15.68	15.68	15.68	15.68	15.68	15.68	15.68	15.68	15.68	15.68	15.68
Amarillo	ATM	13.96	13.96	13.96	13.96	13.96	13.96	13.96	13.96	13.96	13.96	13.96	13.96
Austin	TGS	17.22	17.22	17.22	17.22	17.22	17.22	17.22	17.22	17.22	17.22	17.22	17.22
Beaumont	CEE	16.97	16.97	16.97	16.97	16.97	16.97	16.97	16.97	16.97	16.97	16.97	16.97
Brownsville	TGS	15.72	15.72	15.72	15.72	15.72	15.72	15.72	15.72	15.72	15.72	15.72	15.72
Bryan	TXU	15.68	15.68	15.68	15.68	15.68	15.68	15.68	15.68	15.68	15.68	15.68	15.68
Corpus Christi	MUN	25.63	25.63	25.63	25.63	25.63	25.63	25.63	27.10	27.10	27.10	27.10	27.10
Dallas	TXU	15.68	15.68	15.68	15.68	15.68	15.68	15.68	15.68	15.68	15.68	15.68	15.68
El Paso	TGS	13.22	13.22	13.22	13.22	13.22	13.22	13.22	13.22	13.22	13.22	13.22	13.22
Fort Worth	TXU	15.68	15.68	15.68	15.68	15.68	15.68	15.68	15.68	15.68	15.68	15.68	15.68
Galveston	TGS	18.92	18.92	18.92	18.92	18.92	18.92	18.92	18.92	18.92	18.92	18.92	18.92
Houston	CEE	13.26	13.26	13.26	13.26	13.26	13.26	13.26	13.26	13.26	13.26	13.26	13.26
Laredo	CEE	16.85	16.85	16.85	16.85	16.85	16.85	16.85	16.85	16.85	16.85	16.85	16.85
Lubbock	ATM	15.25	15.25	15.25	15.25	15.25	15.25	15.25	15.25	15.25	15.25	15.25	15.25
McAllen	TGS	15.72	15.72	15.72	15.72	15.72	15.72	15.72	15.72	15.72	15.72	15.72	15.72
Midland	ATM	15.12	15.12	15.12	15.12	15.12	15.12	15.12	15.12	15.12	15.12	15.12	15.12
Odessa	ATM	15.12	15.12	15.12	15.12	15.12	15.12	15.12	15.12	15.12	15.12	15.12	15.12
San Angelo	TXU	15.68	15.68	15.68	15.68	15.68	15.68	15.68	15.68	15.68	15.68	15.68	15.68
San Antonio	MUN	16.93	16.93	16.93	16.93	16.93	16.93	16.93	16.93	16.93	16.93	16.93	16.93
Sherman	TXU	15.68	15.68	15.68	15.68	15.68	15.68	15.68	15.68	15.68	15.68	15.68	15.68
Temple	TXU	15.68	15.68	15.68	15.68	15.68	15.68	15.68	15.68	15.68	15.68	15.68	15.68
Texarkana	CEA	24.75	24.75	24.75	24.75	24.75	24.75	24.75	24.75	24.75	24.75	24.75	24.75
Tyler	CEE	17.85	17.85	17.85	17.85	17.85	17.85	17.85	17.85	17.85	17.85	17.85	17.85
Waco	TXU	15.68	15.68	15.68	15.68	15.68	15.68	15.68	15.68	15.68	15.68	15.68	15.68
Wichita Falls	TXU	15.68	15.68	15.68	15.68	15.68	15.68	15.68	15.68	15.68	15.68	15.68	15.68
Average		16.54	16.54	16.54	16.54	16.54	16.54	16.54	16.60	16.60	16.60	16.60	16.60

**TWENTY-FIVE TEXAS CITIES
SIX MCF RESIDENTIAL GAS BILL
COST OF SERVICE**

