

**SIX MCF RESIDENTIAL GAS BILL ANALYSIS
FOR TWENTY-FIVE TEXAS CITIES**



GAS SERVICES DIVISION
January through December 2003

Table of Contents

Introduction	Page 1
Table 1 - Total Bill	Pages 2-3
Table 2 - Analysis of Gas Bill	Pages 4-5
Table 3 - Cost of Gas	Pages 6-7
Table 4 - Analysis of Cost of Gas	Pages 8-9
Table 5 - Cost of Service	Pages 10-11

Introduction

Included within are five tables reflecting an analysis of a 6 Mcf gas bill for twenty-five Texas cities. These cities provide a geographic representation of the State.

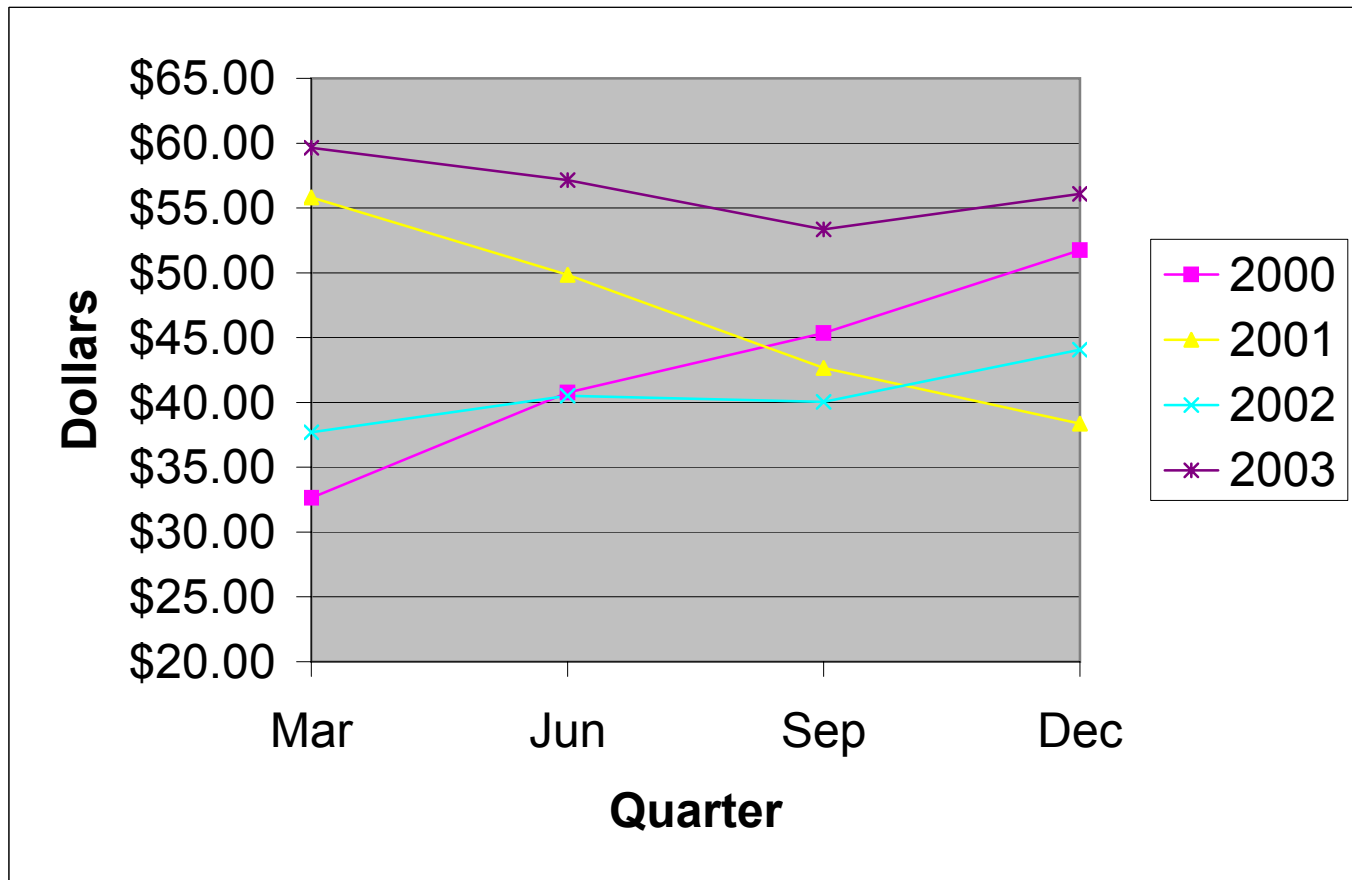
Six Mcf reflects the approximate monthly average consumption of gas on an annual basis for the state, and is used in each table.

All other items such as penalties, taxes, applicable city fees, etc., normally included in a gross bill are excluded.

**TABLE 1 - TWENTY FIVE TEXAS CITIES
SIX MCF RESIDENTIAL GAS BILL
TOTAL BILL
(Cost of Gas Plus Cost of Service)**

CITY	GAS CO.	JAN 03	FEB 03	MAR 03	APR 03	MAY 03	JUN 03	JUL 03	AUG 03	SEP 03	OCT 03	NOV 03	DEC 03
Abilene	TXU	40.88	45.16	54.88	60.67	60.67	60.67	53.07	53.07	53.07	62.44	62.44	62.44
Amarillo	ATM	36.30	37.66	46.82	36.47	36.73	39.13	37.34	37.20	37.59	37.28	37.28	40.49
Austin	TGS	48.02	49.86	64.08	51.43	51.48	56.08	56.35	51.21	53.69	50.87	53.78	55.26
Beaumont	CCE	50.73	50.73	57.77	57.77	57.77	57.77	57.77	63.14	63.14	63.14	63.14	63.14
Brownsville	TGS	49.11	51.47	74.04	49.81	49.56	54.37	52.40	45.32	47.08	43.73	46.07	43.03
Bryan	TXU	44.10	48.37	58.09	63.89	63.89	63.89	56.29	56.29	56.29	65.66	65.66	65.66
Corpus Christi	MUN	57.85	61.69	73.75	75.55	61.81	64.81	66.85	63.43	60.79	59.83	58.15	60.79
Dallas	TXU	39.29	43.56	53.28	59.08	59.08	59.08	51.48	51.48	51.48	60.85	60.85	60.85
El Paso	TGS	36.06	36.46	40.41	34.77	36.11	41.79	40.96	36.66	41.00	36.60	38.90	37.09
Fort Worth	TXU	41.00	45.25	54.93	60.70	60.70	60.70	53.13	53.13	53.13	62.25	62.25	62.25
Galveston	TGS	57.41	59.97	85.55	81.73	58.17	63.09	59.45	54.74	57.03	54.25	57.07	55.11
Houston	CEE	41.04	52.43	52.43	52.43	52.43	52.43	52.43	58.70	58.70	58.70	58.70	58.70
Laredo	CEE	44.76	44.76	44.74	52.46	52.46	52.46	52.46	57.06	57.06	57.06	57.06	57.06
Lubbock	ATM	40.69	43.09	54.85	46.27	43.87	49.87	45.97	42.97	42.85	40.03	44.71	47.11
McAllen	TGS	49.11	51.47	74.04	49.81	49.56	54.97	53.00	45.92	47.68	44.33	46.67	43.63
Midland	ATM	50.83	43.09	54.85	46.27	50.71	56.11	51.55	48.73	49.87	46.81	50.17	47.11
Odessa	ATM	46.33	43.09	68.77	48.31	48.61	50.11	49.75	46.81	47.77	43.15	46.33	44.59
San Angelo	TXU	42.50	46.78	56.50	62.29	62.29	62.29	54.69	54.69	54.69	64.06	64.06	64.06
San Antonio	MUN	49.35	52.49	75.06	61.95	56.20	58.85	57.05	48.95	56.84	47.53	47.05	50.94
Sherman	TXU	41.30	45.57	55.29	61.09	61.09	61.09	53.49	53.49	53.49	62.86	62.86	62.86
Temple	TXU	43.92	48.19	57.91	63.71	63.71	63.71	56.11	56.11	56.11	65.48	65.48	65.48
Texarkana	CEA	59.18	59.18	67.05	76.39	76.39	67.91	67.91	68.23	68.30	68.30	69.61	69.47
Tyler	CEE	43.91	43.91	53.67	53.67	53.67	53.67	53.67	57.57	57.57	57.57	57.57	57.57
Waco	TXU	44.73	49.01	58.73	64.52	64.52	64.52	56.93	56.93	57.09	66.30	66.30	66.30
Wichita Falls	TXU	39.48	43.76	53.47	59.27	59.27	59.27	51.67	51.67	51.67	61.04	61.04	61.04
Average		45.52	47.88	59.64	57.21	55.63	57.15	53.67	52.54	53.36	55.20	56.13	56.08

**TWENTY-FIVE TEXAS CITIES
SIX MCF RESIDENTIAL GAS BILL
TOTAL BILL**



**TABLE 2 - TWENTY FIVE TEXAS CITIES
SIX MCF RESIDENTIAL GAS BILL
ANALYSIS OF GAS BILL**

CITY	GAS CO.	Jan-03			Feb-03			Mar-03			Apr-03			May-03			Jun-03		
		A	B	C	A	B	C	A	B	C	A	B	C	A	B	C	A	B	C
Abilene	TXU	13.85	27.03	40.88	13.85	31.30	45.16	13.85	41.02	54.88	13.85	46.82	60.67	13.85	46.82	60.67	13.85	46.82	60.67
Amarillo	ATM	11.79	24.51	36.30	11.79	25.87	37.66	11.79	35.03	46.82	11.79	24.68	36.47	11.79	24.94	36.73	11.79	27.34	39.13
Austin	TGS	17.22	30.79	48.02	17.22	32.64	49.86	17.22	46.85	64.08	17.22	34.21	51.43	17.22	34.25	51.48	17.22	38.85	56.08
Beaumont	CEE	16.96	33.77	50.73	16.96	33.77	50.73	16.96	40.80	57.77	16.96	40.80	57.77	16.96	40.80	57.77	16.96	40.80	57.77
Brownsville	TGS	15.72	33.39	49.11	15.72	35.75	51.47	15.72	58.31	74.04	15.72	34.09	49.81	15.72	33.84	49.56	15.72	38.65	54.37
Bryan	TXU	17.07	27.03	44.10	17.07	31.30	48.37	17.07	41.02	58.09	17.07	46.82	63.89	17.07	46.82	63.89	17.07	46.82	63.89
Corpus Christi	MUN	27.49	30.36	57.85	27.49	34.20	61.69	27.49	46.26	73.75	27.49	48.06	75.55	27.49	34.32	61.81	27.49	37.32	64.81
Dallas	TXU	12.26	27.03	39.29	12.26	31.30	43.56	12.26	41.02	53.28	12.26	46.82	59.08	12.26	46.82	59.08	12.26	46.82	59.08
El Paso	TGS	9.10	26.96	36.06	9.10	27.36	36.46	9.10	31.31	40.41	9.10	25.67	34.77	9.10	27.01	36.11	9.10	32.69	41.79
Fort Worth	TXU	14.46	26.54	41.00	14.46	30.80	45.25	14.46	40.47	54.93	14.46	46.24	60.70	14.46	46.24	60.70	14.46	46.24	60.70
Galveston	TGS	16.98	40.42	57.41	16.98	42.98	59.97	16.98	68.56	85.55	16.98	64.75	81.73	16.98	41.18	58.17	16.98	46.10	63.09
Houston	CEE	13.38	27.66	41.04	13.38	39.05	52.43	13.38	39.05	52.43	13.38	39.05	52.43	13.38	39.05	52.43	13.38	39.05	52.43
Laredo	CEE	16.85	27.91	44.76	16.85	27.91	44.76	16.85	27.89	44.74	16.85	35.61	52.46	16.85	35.61	52.46	16.85	35.61	52.46
Lubbock	ATM	13.99	26.70	40.69	13.99	29.10	43.09	13.99	40.86	54.85	13.99	32.28	46.27	13.99	29.88	43.87	13.99	35.88	49.87
McAllen	TGS	15.72	33.39	49.11	15.72	35.75	51.47	15.72	58.31	74.04	15.72	34.09	49.81	15.72	33.84	49.56	15.72	39.25	54.97
Midland	ATM	13.99	36.84	50.83	13.99	29.10	43.09	13.99	40.86	54.85	13.99	32.28	46.27	13.99	36.72	50.71	13.99	42.12	56.11
Odessa	ATM	13.99	32.34	46.33	13.99	29.10	43.09	13.99	54.78	68.77	13.99	34.32	48.31	13.99	34.62	48.61	13.99	36.12	50.11
San Angelo	TXU	15.47	27.03	42.50	15.47	31.30	46.78	15.47	41.02	56.50	15.47	46.82	62.29	15.47	46.82	62.29	15.47	46.82	62.29
San Antonio	MUN	16.93	32.42	49.35	16.93	35.56	52.49	16.93	58.13	75.06	16.93	45.02	61.95	16.93	39.27	56.20	16.93	41.92	58.85
Sherman	TXU	14.26	27.03	41.30	14.26	31.30	45.57	14.26	41.02	55.29	14.26	46.82	61.09	14.26	46.82	61.09	14.26	46.82	61.09
Temple	TXU	16.89	27.03	43.92	16.89	31.30	48.19	16.89	41.02	57.91	16.89	46.82	63.71	16.89	46.82	63.71	16.89	46.82	63.71
Texarkana	CEA	24.75	34.43	59.18	24.75	34.43	59.18	24.75	42.31	67.05	24.75	51.64	76.39	24.75	51.64	76.39	24.75	43.16	67.91
Tyler	CEE	16.29	27.62	43.91	16.29	27.62	43.91	16.29	37.38	53.67	16.29	37.38	53.67	16.29	37.38	53.67	16.29	37.38	53.67
Waco	TXU	17.70	27.03	44.73	17.70	31.30	49.01	17.70	41.02	58.73	17.70	46.82	64.52	17.70	46.82	64.52	17.70	46.82	64.52
Wichita Falls	TXU	12.45	27.03	39.48	12.45	31.30	43.76	12.45	41.02	53.47	12.45	46.82	59.27	12.45	46.82	59.27	12.45	46.82	59.27
Average		15.82	29.69	45.52	15.82	32.06	47.88	15.82	43.81	59.64	15.82	41.39	57.21	15.82	39.81	55.63	15.82	41.32	57.15

A-COST OF SERVICE (EXCLUDING COST OF GAS)

B-COST OF GAS (INCLUDES COST OF GAS IN BASE PLUS COST OF GAS ADJUSTMENT)

C-TOTAL BILL (TOTAL COST OF GAS PLUS COST OF SERVICE)

**TABLE 2 - TWENTY FIVE TEXAS CITIES
SIX MCF RESIDENTIAL GAS BILL
ANALYSIS OF GAS BILL**

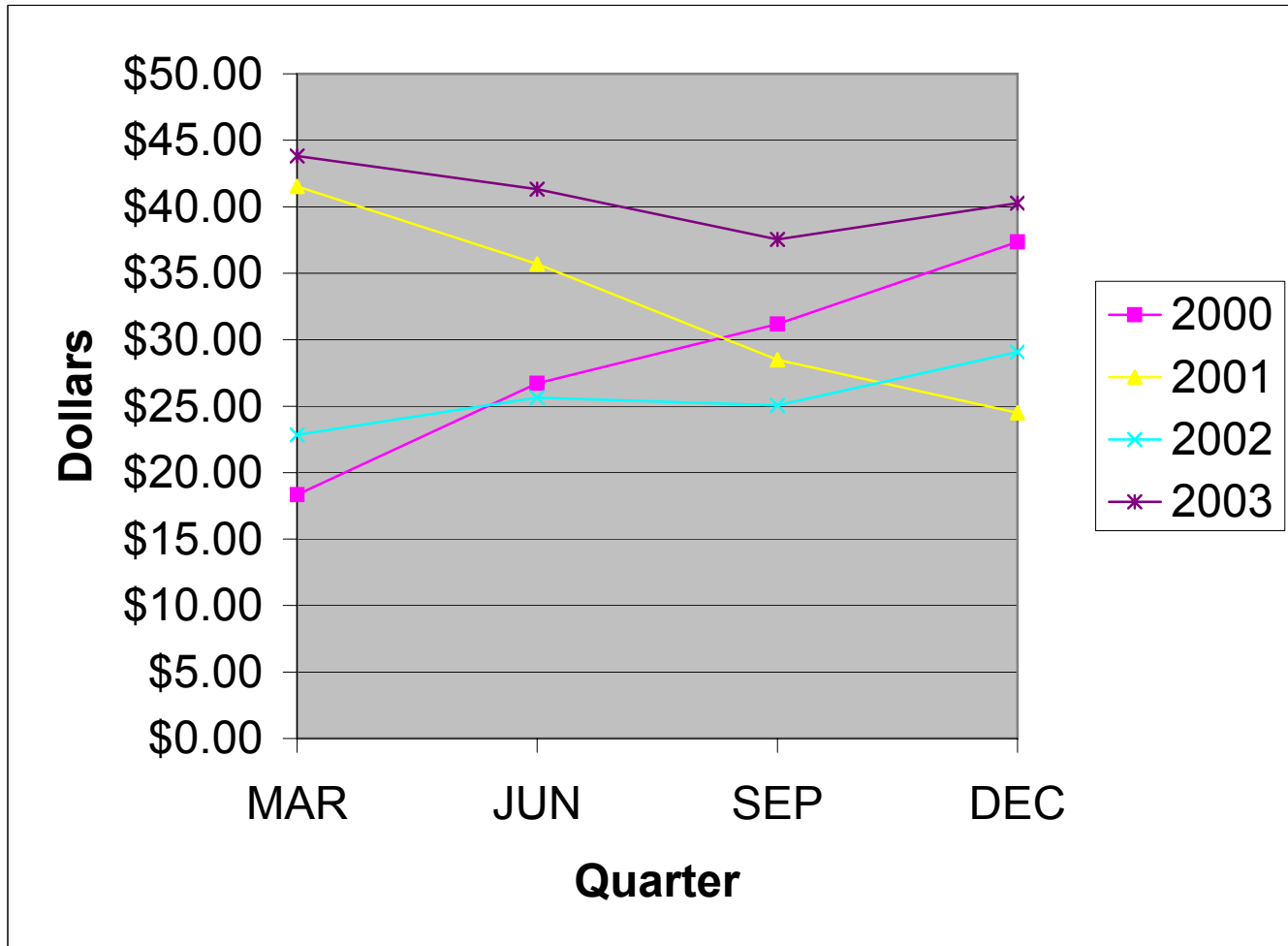
Jul-03			Aug-03			Sep-03			Oct-03			Nov-03			Dec-03			GAS CO. CITY	
A	B	C	A	B	C	A	B	C	A	B	C	A	B	C	A	B	C		
13.85	39.22	53.07	13.85	39.22	53.07	13.85	39.22	53.07	13.85	48.59	62.44	13.85	48.59	62.44	13.85	48.59	62.44	TXU	Abilene
11.79	25.55	37.34	11.79	25.41	37.20	11.79	25.80	37.59	11.79	25.49	37.28	11.79	25.49	37.28	11.79	28.70	40.49	ATM	Amarillo
17.22	39.13	56.35	17.22	33.98	51.21	17.22	36.46	53.69	17.22	33.64	50.87	17.22	36.56	53.78	17.22	38.04	55.26	TGS	Austin
16.96	40.80	57.77	16.96	46.17	63.14	16.96	46.17	63.14	16.96	46.17	63.14	16.96	46.17	63.14	16.96	46.17	63.14	CEE	Beaumont
15.72	36.67	52.40	15.72	29.60	45.32	15.72	31.36	47.08	15.72	28.01	43.73	15.72	30.35	46.07	15.72	27.31	43.03	TGS	Brownsville
17.07	39.22	56.29	17.07	39.22	56.29	17.07	39.22	56.29	17.07	48.59	65.66	17.07	48.59	65.66	17.07	48.59	65.66	TXU	Bryan
27.49	39.36	66.85	27.49	35.94	63.43	27.49	33.30	60.79	27.49	32.34	59.83	27.49	30.66	58.15	27.49	33.30	60.79	MUN	Corpus Christi
12.26	39.22	51.48	12.26	39.22	51.48	12.26	39.22	51.48	12.26	48.59	60.85	12.26	48.59	60.85	12.26	48.59	60.85	TXU	Dallas
9.10	31.86	40.96	9.10	27.56	36.66	9.10	31.90	41.00	9.10	27.50	36.60	9.10	29.80	38.90	9.10	27.99	37.09	TGS	El Paso
14.46	38.67	53.13	14.46	38.67	53.13	14.46	38.67	53.13	14.46	47.79	62.25	14.46	47.79	62.25	14.46	47.79	62.25	TXU	Fort Worth
16.98	42.47	59.45	16.98	37.76	54.74	16.98	40.04	57.03	16.98	37.26	54.25	16.98	40.08	57.07	16.98	38.12	55.11	TGS	Galveston
13.38	39.05	52.43	13.38	45.32	58.70	13.38	45.32	58.70	13.38	45.32	58.70	13.38	45.32	58.70	13.38	45.32	58.70	CEE	Houston
16.85	35.61	52.46	16.85	40.22	57.06	16.85	40.22	57.06	16.85	40.22	57.06	16.85	40.22	57.06	16.85	40.22	57.06	CEE	Laredo
13.99	31.98	45.97	13.99	28.98	42.97	13.99	28.86	42.85	13.99	26.04	40.03	13.99	30.72	44.71	13.99	33.12	47.11	ATM	Lubbock
15.72	37.27	53.00	15.72	30.20	45.92	15.72	31.96	47.68	15.72	28.61	44.33	15.72	30.95	46.67	15.72	27.91	43.63	TGS	McAllen
13.99	37.56	51.55	13.99	34.74	48.73	13.99	35.88	49.87	13.99	32.82	46.81	13.99	36.18	50.17	13.99	33.12	47.11	ATM	Midland
13.99	35.76	49.75	13.99	32.82	46.81	13.99	33.78	47.77	13.99	29.16	43.15	13.99	32.34	46.33	13.99	30.60	44.59	ATM	Odessa
15.47	39.22	54.69	15.47	39.22	54.69	15.47	39.22	54.69	15.47	48.59	64.06	15.47	48.59	64.06	15.47	48.59	64.06	TXU	San Angelo
16.93	40.12	57.05	16.93	32.02	48.95	16.93	39.91	56.84	16.93	30.60	47.53	16.93	30.12	47.05	16.93	34.01	50.94	MUN	San Antonio
14.26	39.22	53.49	14.26	39.22	53.49	14.26	39.22	53.49	14.26	48.59	62.86	14.26	48.59	62.86	14.26	48.59	62.86	TXU	Sherman
16.89	39.22	56.11	16.89	39.22	56.11	16.89	39.22	56.11	16.89	48.59	65.48	16.89	48.59	65.48	16.89	48.59	65.48	TXU	Temple
24.75	43.16	67.91	24.75	43.48	68.23	24.75	43.55	68.30	24.75	43.55	68.30	24.75	44.86	69.61	24.75	44.72	69.47	CEA	Texarkana
16.29	37.38	53.67	16.29	41.28	57.57	16.29	41.28	57.57	16.29	41.28	57.57	16.29	41.28	57.57	16.29	41.28	57.57	CEE	Tyler
17.70	39.22	56.93	17.70	39.22	56.93	17.70	39.39	57.09	17.70	48.59	66.30	17.70	48.59	66.30	17.70	48.59	66.30	TXU	Waco
12.45	39.22	51.67	12.45	39.22	51.67	12.45	39.22	51.67	12.45	48.59	61.04	12.45	48.59	61.04	12.45	48.59	61.04	TXU	Wichita Falls
15.82	37.85	53.67	15.82	36.72	52.54	15.82	37.54	53.36	15.82	39.38	55.20	15.82	40.30	56.13	15.82	40.26	56.08		Average

**TABLE 3 - TWENTY FIVE TEXAS CITIES
SIX MCF RESIDENTIAL GAS BILL
***COST OF GAS
(EXCLUDING COST OF SERVICE)**

CITY	GAS CO.	Jan-03	Feb-03	Mar-03	Apr-03	May-03	Jun-03	Jul-03	Aug-03	Sep-03	Oct-03	Nov-03	Dec-03
Abilene	TXU	27.03	31.30	41.02	46.82	46.82	46.82	39.22	39.22	39.22	48.59	48.59	48.59
Amarillo	ATM	24.51	25.87	35.03	24.68	24.94	27.34	25.55	25.41	25.80	25.49	25.49	28.70
Austin	TGS	30.79	32.64	46.85	34.21	34.25	38.85	39.13	33.98	36.46	33.64	36.56	38.04
Beaumont	CEE	33.77	33.77	40.80	40.80	40.80	40.80	40.80	46.17	46.17	46.17	46.17	46.17
Brownsville	TGS	33.39	35.75	58.31	34.09	33.84	38.65	36.67	29.60	31.36	28.01	30.35	27.31
Bryan	TXU	27.03	31.30	41.02	46.82	46.82	46.82	39.22	39.22	39.22	48.59	48.59	48.59
Corpus Christi	MUN	30.36	34.20	46.26	48.06	34.32	37.32	39.36	35.94	33.30	32.34	30.66	33.30
Dallas	TXU	27.03	31.30	41.02	46.82	46.82	46.82	39.22	39.22	39.22	48.59	48.59	48.59
El Paso	TGS	26.96	27.36	31.31	25.67	27.01	32.69	31.86	27.56	31.90	27.50	29.80	27.99
Fort Worth	TXU	26.54	30.80	40.47	46.24	46.24	46.24	38.67	38.67	38.67	47.79	47.79	47.79
Galveston	TGS	40.42	42.98	68.56	64.75	41.18	46.10	42.47	37.76	40.04	37.26	40.08	38.12
Houston	CEE	27.66	39.05	39.05	39.05	39.05	39.05	39.05	45.32	45.32	45.32	45.32	45.32
Laredo	CEE	27.91	27.91	27.89	35.61	35.61	35.61	35.61	40.22	40.22	40.22	40.22	40.22
Lubbock	ATM	26.70	29.10	40.86	32.28	29.88	35.88	31.98	28.98	28.86	26.04	30.72	33.12
McAllen	TGS	33.39	35.75	58.31	34.09	33.84	39.25	37.27	30.20	31.96	28.61	30.95	27.91
Midland	ATM	36.84	29.10	40.86	32.28	36.72	42.12	37.56	34.74	35.88	32.82	36.18	33.12
Odessa	ATM	32.34	29.10	54.78	34.32	34.62	36.12	35.76	32.82	33.78	29.16	32.34	30.60
San Angelo	TXU	27.03	31.30	41.02	46.82	46.82	46.82	39.22	39.22	39.22	48.59	48.59	48.59
San Antonio	MUN	32.42	35.56	58.13	45.02	39.27	41.92	40.12	32.02	39.91	30.60	30.12	34.01
Sherman	TXU	27.03	31.30	41.02	46.82	46.82	46.82	39.22	39.22	39.22	48.59	48.59	48.59
Temple	TXU	27.03	31.30	41.02	46.82	46.82	46.82	39.22	39.22	39.22	48.59	48.59	48.59
Texarkana	CEA	34.43	34.43	42.31	51.64	51.64	43.16	43.16	43.48	43.55	43.55	44.86	44.72
Tyler	CEE	27.62	27.62	37.38	37.38	37.38	37.38	37.38	41.28	41.28	41.28	41.28	41.28
Waco	TXU	27.03	31.30	41.02	46.82	46.82	46.82	39.22	39.22	39.39	48.59	48.59	48.59
Wichita Falls	TXU	27.03	31.30	41.02	46.82	46.82	46.82	39.22	39.22	39.22	48.59	48.59	48.59
Average		29.69	32.06	43.81	41.39	39.81	41.32	37.85	36.72	37.54	39.38	40.30	40.26

***INCLUDES COST OF GAS IN BASE RATE PLUS COST OF GAS ADJUSTMENT.

**TWENTY-FIVE TEXAS CITIES
SIX MCF RESIDENTIAL GAS BILL
COST OF GAS**



**TABLE 4 - TWENTY FIVE TEXAS CITIES
SIX MCF RESIDENTIAL GAS BILL
ANALYSIS OF COST OF GAS**

CITY	GAS CO.	Jan-03			Feb-03			Mar-03			Apr-03			May-03			Jun-03		
		A	B	C	A	B	C	A	B	C	A	B	C	A	B	C	A	B	C
Abilene	TXU	0.00	27.03	27.03	0.00	31.30	31.30	0.00	41.02	41.02	0.00	46.82	46.82	0	46.82	46.82	0	46.82	46.82
Amarillo	ATM	0.00	24.51	24.51	0.00	25.87	25.87	0.00	35.03	35.03	0.00	24.68	24.68	0	24.94	24.94	0	27.34	27.34
Austin	TGS	0.00	30.79	30.79	0.00	32.64	32.64	0.00	46.85	46.85	0.00	34.21	34.21	0	34.25	34.25	0	38.85	38.85
Beaumont	CEE	20.40	13.37	33.77	20.40	13.37	33.77	20.40	20.40	40.80	20.40	20.40	40.80	20.40	20.40	40.80	20.40	20.40	40.80
Brownsville	TGS	0.00	33.39	33.39	0.00	35.75	35.75	0.00	58.31	58.31	0.00	34.09	34.09	0.00	33.84	33.84	0.00	38.65	38.65
Bryan	TXU	0.00	27.03	27.03	0.00	31.30	31.30	0.00	41.02	41.02	0.00	46.82	46.82	0	46.82	46.82	0	46.82	46.82
Corpus Christi	MUN	0.00	30.36	30.36	0.00	34.20	34.20	0.00	46.26	46.26	0.00	48.06	48.06	0	34.32	34.32	0	37.32	37.32
Dallas	TXU	0.00	27.03	27.03	0.00	31.30	31.30	0.00	41.02	41.02	0.00	46.82	46.82	0	46.82	46.82	0	46.82	46.82
El Paso	TGS	0.00	26.96	26.96	0.00	27.36	27.36	0.00	31.31	31.31	0.00	25.67	25.67	0	27.01	27.01	0	32.69	32.69
Fort Worth	TXU	16.52	10.02	26.54	16.52	14.27	30.80	16.52	23.95	40.47	16.52	29.71	46.24	16.521	29.71	46.24	16.521	29.71	46.24
Galveston	TGS	0.00	40.42	40.42	0.00	42.98	42.98	0.00	68.56	68.56	0.00	64.75	64.75	0	41.18	41.18	0	46.10	46.10
Houston	CEE	15.43	12.23	27.66	15.43	23.62	39.05	15.43	23.62	39.05	15.43	23.62	39.05	15.43	23.62	39.05	15.43	23.62	39.05
Laredo	CEE	18.87	9.04	27.91	18.87	9.04	27.91	18.87	9.02	27.89	18.87	16.74	35.61	18.87	16.74	35.61	18.87	16.74	35.61
Lubbock	ATM	0.00	26.70	26.70	0.00	29.10	29.10	0.00	40.86	40.86	0.00	32.28	32.28	0	29.88	29.88	0	35.88	35.88
McAllen	TGS	0.00	33.39	33.39	0.00	35.75	35.75	0.00	58.31	58.31	0.00	34.09	34.09	0.00	33.84	33.84	0.00	39.25	39.25
Midland	ATM	0.00	36.84	36.84	0.00	29.10	29.10	0.00	40.86	40.86	0.00	32.28	32.28	0	36.72	36.72	0	42.12	42.12
Odessa	ATM	0.00	32.34	32.34	0.00	29.10	29.10	0.00	54.78	54.78	0.00	34.32	34.32	0	34.62	34.62	0	36.12	36.12
San Angelo	TXU	0.00	27.03	27.03	0.00	31.30	31.30	0.00	41.02	41.02	0.00	46.82	46.82	0	46.82	46.82	0	46.82	46.82
San Antonio	MUN	13.20	19.22	32.42	13.20	22.36	35.56	13.20	44.93	58.13	13.20	31.82	45.02	13.20	26.07	39.27	13.20	28.72	41.92
Sherman	TXU	0.00	27.03	27.03	0.00	31.30	31.30	0.00	41.02	41.02	0.00	46.82	46.82	0	46.82	46.82	0	46.82	46.82
Temple	TXU	0.00	27.03	27.03	0.00	31.30	31.30	0.00	41.02	41.02	0.00	46.82	46.82	0	46.82	46.82	0	46.82	46.82
Texarkana	CEA	0.00	34.43	34.43	0.00	34.43	34.43	0.00	42.31	42.31	0.00	51.64	51.64	0	51.64	51.64	0	43.16	43.16
Tyler	CEE	19.65	7.97	27.62	19.65	7.97	27.62	19.65	17.73	37.38	19.65	17.73	37.38	19.65	17.73	37.38	19.65	17.73	37.38
Waco	TXU	0.00	27.03	27.03	0.00	31.30	31.30	0.00	41.02	41.02	0.00	46.82	46.82	0	46.82	46.82	0	46.82	46.82
Wichita Falls	TXU	0.00	27.03	27.03	0.00	31.30	31.30	0.00	41.02	41.02	0.00	46.82	46.82	0	46.82	46.82	0	46.82	46.82
Average		4.16	25.53	29.69	4.16	27.89	32.06	4.16	39.65	43.81	4.16	37.23	41.39	4.16	35.64	39.81	4.16	37.16	41.32

A-COST OF GAS INCLUDED IN BASE RATE

B-COST OF GAS ADJUSTMENT

C-TOTAL COST OF GAS

**TABLE 4 - TWENTY FIVE TEXAS CITIES
SIX MCF RESIDENTIAL GAS BILL
ANALYSIS OF COST OF GAS**

Jul-03			Aug-03			Sep-03			Oct-03			Nov-03			Dec-03			GAS CO.	CITY
A	B	C	A	B	C	A	B	C	A	B	C	A	B	C	A	B	C		
0.00	39.22	39.22	0.00	39.22	39.22	0.00	39.2226	39.22	0.00	48.59	48.59	0.00	48.59	48.59	0.00	48.59	48.59	TXU	Abilene
0.00	25.55	25.55	0.00	25.41	25.41	0.00	25.7964	25.80	0.00	25.49	25.49	0.00	25.49	25.49	0.00	28.70	28.70	ATM	Amarillo
0.00	39.13	39.13	0.00	33.98	33.98	0.00	36.4638	36.46	0.00	33.64	33.64	0.00	36.56	36.56	0.00	38.04	38.04	TGS	Austin
20.40	20.40	40.80	20.40	25.77	46.17	20.40	25.7736	46.17	20.40	25.77	46.17	20.40	25.77	46.17	20.40	25.77	46.17	CEE	Beaumont
0.00	36.67	36.67	0.00	29.60	29.60	0.00	31.3584	31.36	0.00	28.01	28.01	0.00	30.35	30.35	0.00	27.31	27.31	TGS	Brownsville
0.00	39.22	39.22	0.00	39.22	39.22	0.00	39.2226	39.22	0.00	48.59	48.59	0.00	48.59	48.59	0.00	48.59	48.59	TXU	Bryan
0.00	39.36	39.36	0.00	35.94	35.94	0.00	33.3	33.30	0.00	32.34	32.34	0.00	30.66	30.66	0.00	33.30	33.30	MUN	Corpus Christi
0.00	39.22	39.22	0.00	39.22	39.22	0.00	39.2226	39.22	0.00	48.59	48.59	0.00	48.59	48.59	0.00	48.59	48.59	TXU	Dallas
0.00	31.86	31.86	0.00	27.56	27.56	0.00	31.9044	31.90	0.00	27.50	27.50	0.00	29.80	29.80	0.00	27.99	27.99	TGS	El Paso
16.52	22.15	38.67	16.52	22.15	38.67	16.52	22.1538	38.67	16.52	31.27	47.79	16.52	31.27	47.79	16.52	31.27	47.79	TXU	Fort Worth
0.00	42.47	42.47	0.00	37.76	37.76	0.00	40.041	40.04	0.00	37.26	37.26	0.00	40.08	40.08	0.00	38.12	38.12	TGS	Galveston
15.43	23.62	39.05	15.43	29.89	45.32	15.43	29.889	45.32	15.43	29.89	45.32	15.43	29.89	45.32	15.43	29.89	45.32	CEE	Houston
18.87	16.74	35.61	18.87	21.34	40.22	18.87	21.3438	40.22	18.87	21.34	40.22	18.87	21.34	40.22	18.87	21.34	40.22	CEE	Laredo
0.00	31.98	31.98	0.00	28.98	28.98	0.00	28.86	28.86	0.00	26.04	26.04	0.00	30.72	30.72	0.00	33.12	33.12	ATM	Lubbock
0.00	37.27	37.27	0.00	30.20	30.20	0.00	31.9584	31.96	0.00	28.61	28.61	0.00	30.95	30.95	0.00	27.91	27.91	TGS	McAllen
0.00	37.56	37.56	0.00	34.74	34.74	0.00	35.88	35.88	0.00	32.82	32.82	0.00	36.18	36.18	0.00	33.12	33.12	ATM	Midland
0.00	35.76	35.76	0.00	32.82	32.82	0.00	33.78	33.78	0.00	29.16	29.16	0.00	32.34	32.34	0.00	30.60	30.60	ATM	Odessa
0.00	39.22	39.22	0.00	39.22	39.22	0.00	39.2226	39.22	0.00	48.59	48.59	0.00	48.59	48.59	0.00	48.59	48.59	TXU	San Angelo
13.20	26.92	40.12	13.20	18.82	32.02	13.20	26.709	39.91	13.20	17.40	30.60	13.20	16.92	30.12	13.20	20.81	34.01	MUN	San Antonio
0.00	39.22	39.22	0.00	39.22	39.22	0.00	39.2226	39.22	0.00	48.59	48.59	0.00	48.59	48.59	0.00	48.59	48.59	TXU	Sherman
0.00	39.22	39.22	0.00	39.22	39.22	0.00	39.2226	39.22	0.00	48.59	48.59	0.00	48.59	48.59	0.00	48.59	48.59	TXU	Temple
0.00	43.16	43.16	0.00	43.48	43.48	0.00	43.548	43.55	0.00	43.55	43.55	0.00	44.86	44.86	0.00	44.72	44.72	CEA	Texarkana
19.65	17.73	37.38	19.65	21.64	41.28	19.65	21.6354	41.28	19.65	21.64	41.28	19.65	21.64	41.28	19.65	21.64	41.28	CEE	Tyler
0.00	39.22	39.22	0.00	39.22	39.22	0.00	39.3906	39.39	0.00	48.59	48.59	0.00	48.59	48.59	0.00	48.59	48.59	TXU	Waco
0.00	39.22	39.22	0.00	39.22	39.22	0.00	39.2226	39.22	0.00	48.59	48.59	0.00	48.59	48.59	0.00	48.59	48.59	TXU	Wichita Falls
4.16	33.68	37.85	4.16	32.55	36.72	4.16	33.37	37.54	4.16	35.22	39.38	4.16	36.14	40.30	4.16	36.09	40.26		Average

**TABLE 5 - TWENTY FIVE TEXAS CITIES
SIX MCF RESIDENTIAL GAS BILL
COST OF SERVICE
(EXCLUDING COST OF GAS)**

CITY	GAS CO.	Jan-03	Feb-03	Mar-03	Apr-03	May-03	Jun-03	Jul-03	Aug-03	Sep-03	Oct-03	Nov-03	Dec-03
Abilene	TXU	13.85	13.85	13.85	13.85	13.85	13.85	13.85	13.85	13.85	13.85	13.85	13.85
Amarillo	ATM	11.79	11.79	11.79	11.79	11.79	11.79	11.79	11.79	11.79	11.79	11.79	11.79
Austin	TGS	17.22	17.22	17.22	17.22	17.22	17.22	17.22	17.22	17.22	17.22	17.22	17.22
Beaumont	CEE	16.96	16.96	16.96	16.96	16.96	16.96	16.96	16.96	16.96	16.96	16.96	16.96
Brownsville	TGS	15.72	15.72	15.72	15.72	15.72	15.72	15.72	15.72	15.72	15.72	15.72	15.72
Bryan	TXU	17.07	17.07	17.07	17.07	17.07	17.07	17.07	17.07	17.07	17.07	17.07	17.07
Corpus Christi	MUN	27.49	27.49	27.49	27.49	27.49	27.49	27.49	27.49	27.49	27.49	27.49	27.49
Dallas	TXU	12.26	12.26	12.26	12.26	12.26	12.26	12.26	12.26	12.26	12.26	12.26	12.26
El Paso	TGS	9.10	9.10	9.10	9.10	9.10	9.10	9.10	9.10	9.10	9.10	9.10	9.10
Fort Worth	TXU	14.46	14.46	14.46	14.46	14.46	14.46	14.46	14.46	14.46	14.46	14.46	14.46
Galveston	TGS	16.98	16.98	16.98	16.98	16.98	16.98	16.98	16.98	16.98	16.98	16.98	16.98
Houston	CEE	13.38	13.38	13.38	13.38	13.38	13.38	13.38	13.38	13.38	13.38	13.38	13.38
Laredo	CEE	16.85	16.85	16.85	16.85	16.85	16.85	16.85	16.85	16.85	16.85	16.85	16.85
Lubbock	ATM	13.99	13.99	13.99	13.99	13.99	13.99	13.99	13.99	13.99	13.99	13.99	13.99
McAllen	TGS	15.72	15.72	15.72	15.72	15.72	15.72	15.72	15.72	15.72	15.72	15.72	15.72
Midland	ATM	13.99	13.99	13.99	13.99	13.99	13.99	13.99	13.99	13.99	13.99	13.99	13.99
Odessa	ATM	13.99	13.99	13.99	13.99	13.99	13.99	13.99	13.99	13.99	13.99	13.99	13.99
San Angelo	TXU	15.47	15.47	15.47	15.47	15.47	15.47	15.47	15.47	15.47	15.47	15.47	15.47
San Antonio	MUN	16.93	16.93	16.93	16.93	16.93	16.93	16.93	16.93	16.93	16.93	16.93	16.93
Sherman	TXU	14.26	14.26	14.26	14.26	14.26	14.26	14.26	14.26	14.26	14.26	14.26	14.26
Temple	TXU	16.89	16.89	16.89	16.89	16.89	16.89	16.89	16.89	16.89	16.89	16.89	16.89
Texarkana	CEA	24.75	24.75	24.75	24.75	24.75	24.75	24.75	24.75	24.75	24.75	24.75	24.75
Tyler	CEE	16.29	16.29	16.29	16.29	16.29	16.29	16.29	16.29	16.29	16.29	16.29	16.29
Waco	TXU	17.70	17.70	17.70	17.70	17.70	17.70	17.70	17.70	17.70	17.70	17.70	17.70
Wichita Falls	TXU	12.45	12.45	12.45	12.45	12.45	12.45	12.45	12.45	12.45	12.45	12.45	12.45
Average		15.82	15.82	15.82	15.82	15.82	15.82	15.82	15.82	15.82	15.82	15.82	15.82

**TWENTY-FIVE TEXAS CITIES
SIX MCF RESIDENTIAL GAS BILL
COST OF SERVICE**

