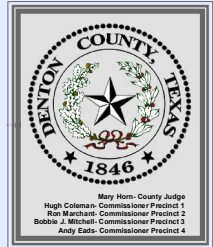
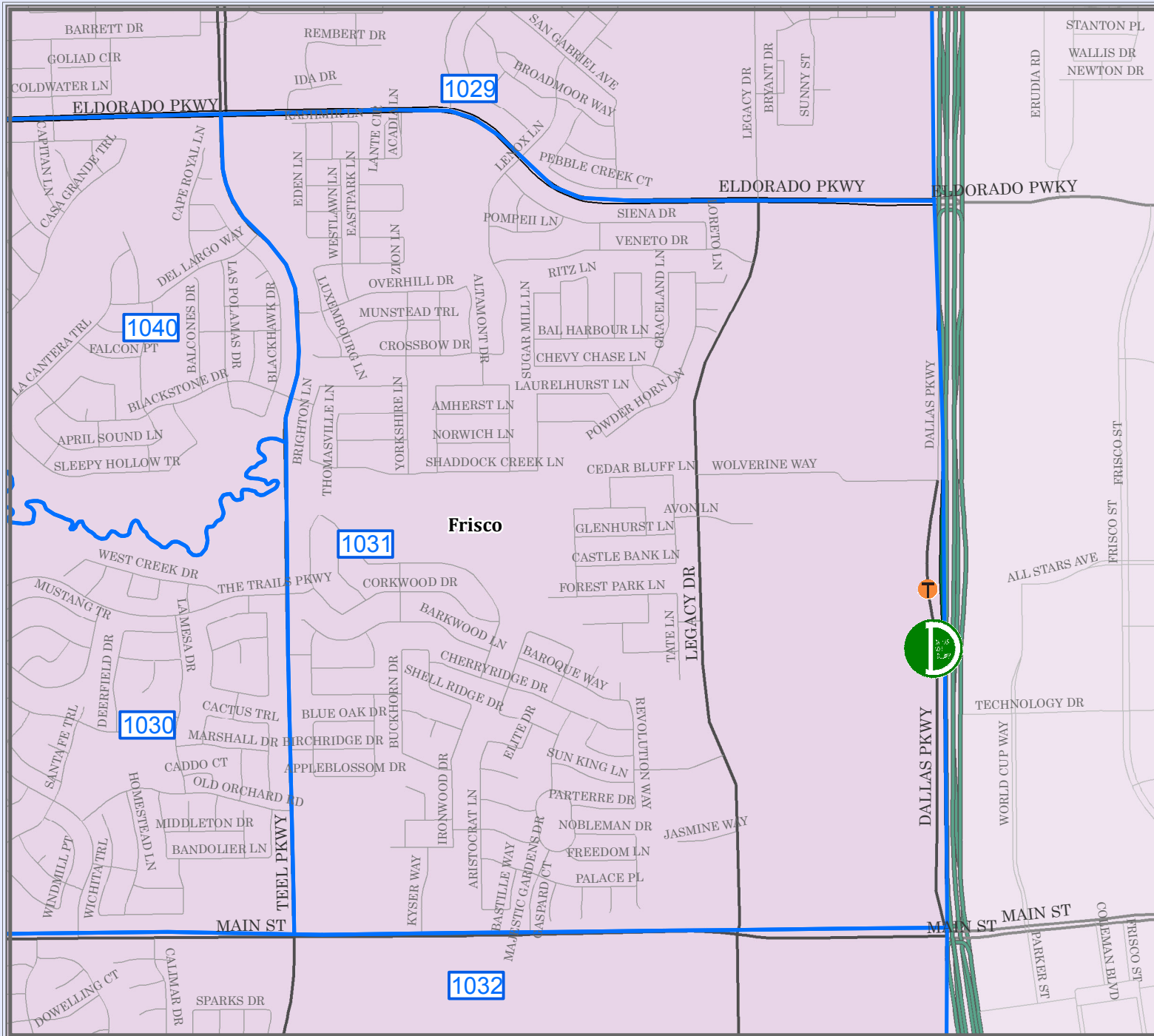


DENTON COUNTY

Voter Precinct 1031



Legend

- INTERSTATE
- U.S. HIGHWAY
- STATE HIGHWAY
- FARM TO MARKET
- MAJOR THOROUGHFARES
- MINOR ROADS
- CEMETERY
- RAILROADS
- AIRPORTS
- STREAMS
- LAKES & PONDS

City Population

Denton	> 100,000
Levellville	40,000 - 100,000
Carrollton	10,000 - 30,000
Waxahatchee	2,000 - 9,999
Other	Less than 2,000



This product is for informational purposes and may not have been prepared for or be suitable for legal, engineering, or surveying purposes. It does not constitute a warranty, survey and represents only the approximate location of property boundaries.

Denton County does not guarantee the correctness or accuracy of any features on this product and assumes no responsibility for correction thereof. This product may be revised at any time without notification to any user.

CONTACT INFORMATION
 LAND INFORMATION DIVISION
 1000 W. WILSON ST., SUITE 1000, DENTON, TX 76201
 (817) 392-3000
 www.dentoncounty.com

