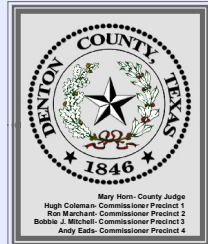
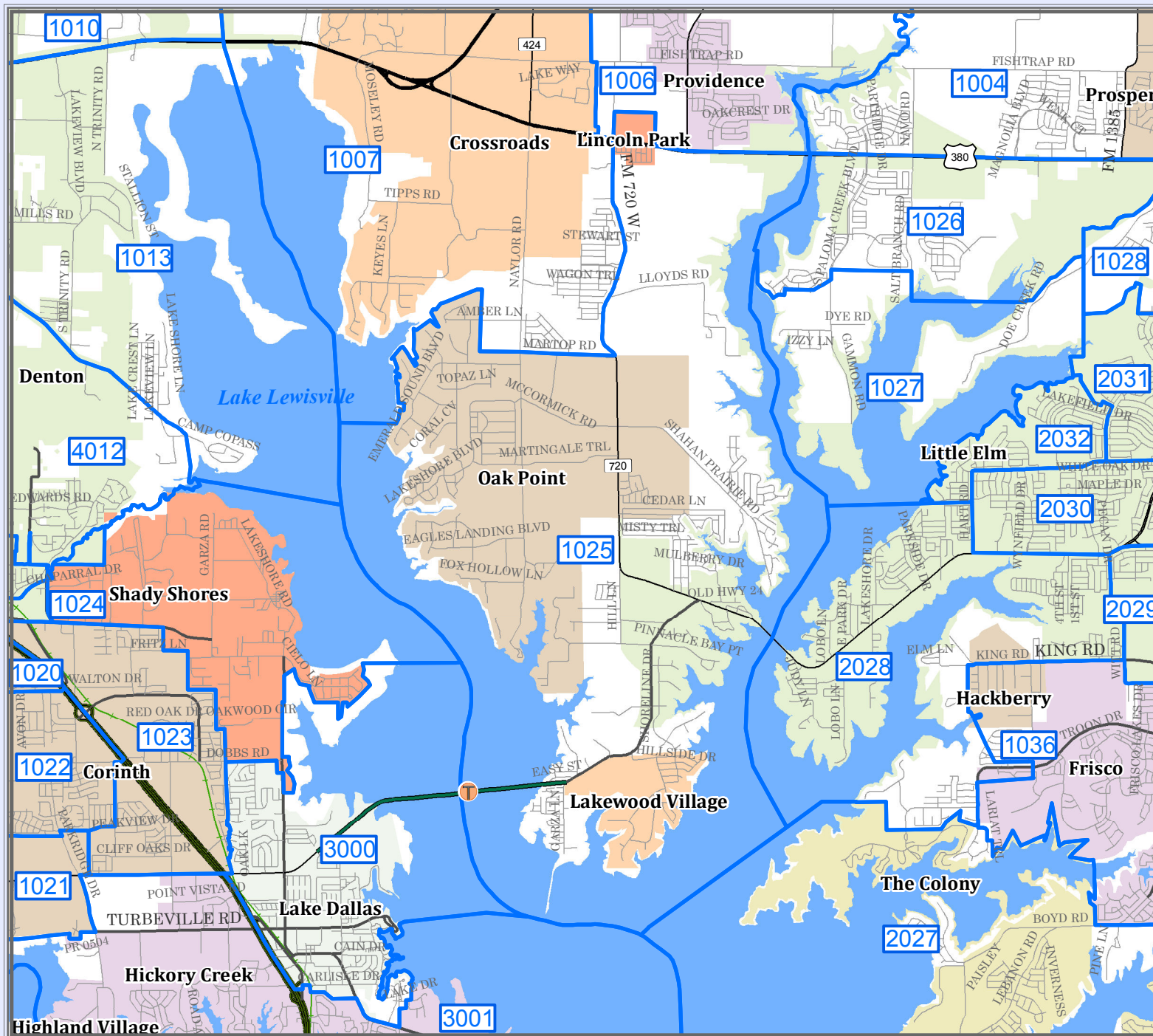


# DENTON COUNTY

## Voter Precinct 1025



**Legend**

- INTERSTATE
- U.S. HIGHWAY
- STATE HIGHWAY
- FARM TO MARKET
- MAJOR THOROUGHFARES
- MINOR ROADS
- CEMETERY
- RAILROADS
- AIRPORTS
- STREAMS
- LAKES & PONDS

**City Population**

Denton > 100,000  
 Lewisville 60,000 - 100,000  
 Carrollton 30,000 - 50,000  
 Sanger 2,000 - 9,999  
 \*Precinct 1 only



This product is for informational purposes and may not have been prepared for or be suitable for legal, engineering, or surveying purposes. It does not represent an on-the-ground survey and represents only the approximate relative location of property boundaries.

Denton County does not guarantee the correctness or accuracy of any features on this product and assumes no responsibility for corrections therewith. This product may be revised at any time without notification to any user.

**CONTACT INFORMATION**  
 LANDS & SURVEYING: 214.231.2000 ext. 3000  
 GIS: 214.231.2000 ext. 3000

