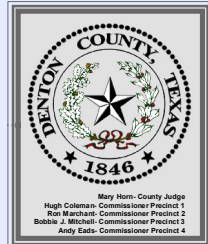
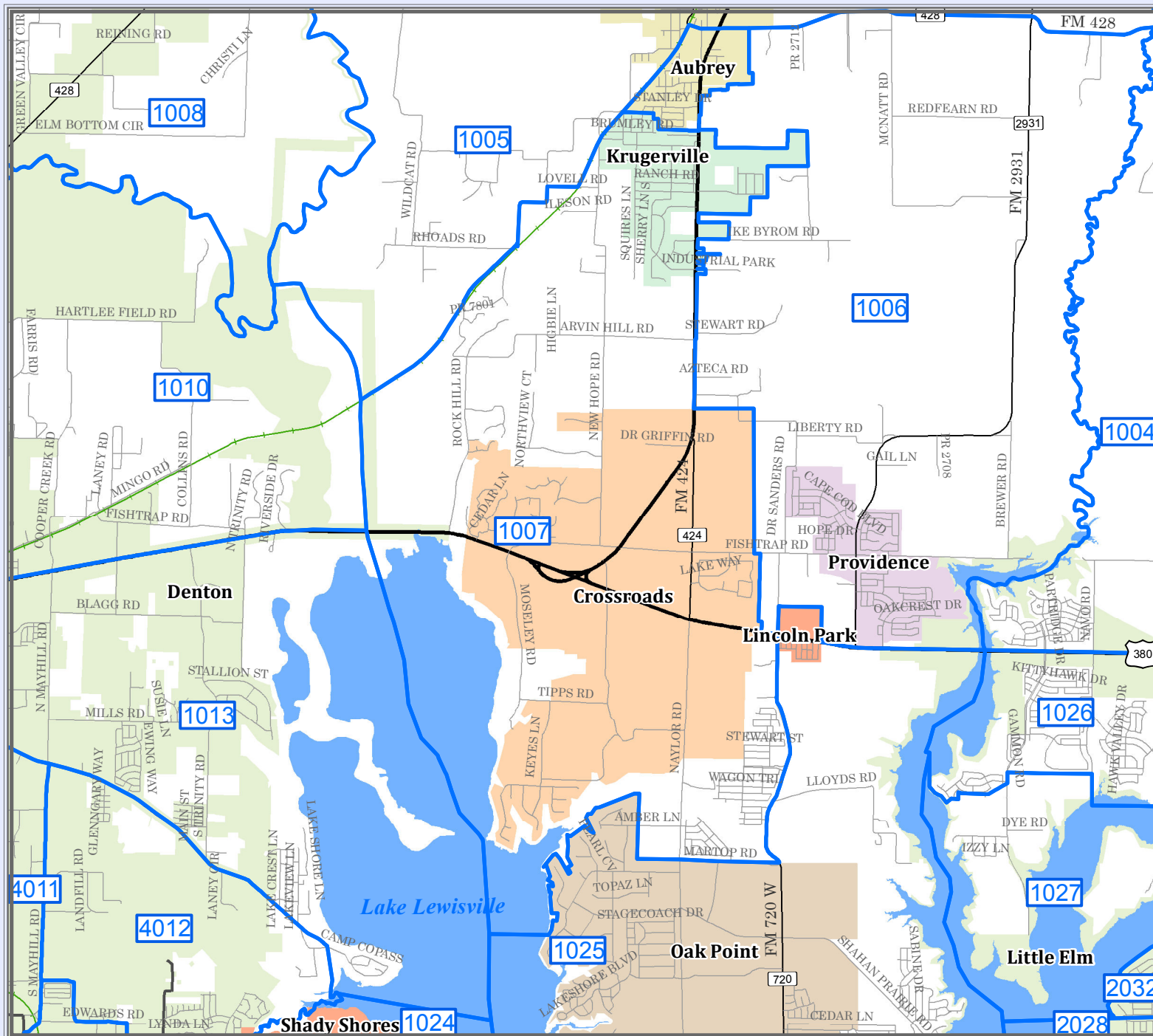


# DENTON COUNTY

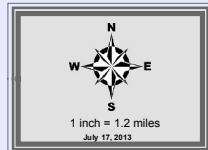
## Voter Precinct 1007



**City Population**

Denton	> 100,000
Lewisville	40,000 - 100,000
Crossroads	10,000 - 30,000
Shady Shores	2,000 - 9,999

Source: U.S. Census Bureau, 2000



This product is for informational purposes only and may not have been prepared for or be suitable for legal, engineering, or surveying purposes. It does not represent the ground survey and represents only the approximate location of property boundaries.

Denton County does not guarantee the correctness or accuracy of any features on this product and assumes no responsibility to correct them. This product may be revised at any time without notification to any user.

**CONTACT INFORMATION**  
 LAND INFORMATION DIVISION  
 500 S. MAIN ST., DENTON, TEXAS 76201  
 TEL: 940.387.2000  
 FAX: 940.387.2001

