

GROUND-WATER LEVELS

IREDELL COUNTY—Continued

353135080524203. County number, IR-132; DENR Langtree Research Station MW-2D (Bedrock well).

LOCATION.--Lat 35°31'35.62", long 80°52'42.29", Hydrologic Unit 03050101, 2.5 mi northwest of Davidson, .1 mi north of Langtree Road at Davidson College Lake Campus. Owner: DENR (North Carolina Department of Environment and Natural Resources), Division of Water Quality.

WATER-LEVEL RECORDS

AQUIFER.--Quartz diorite bedrock.

WELL CHARACTERISTICS.--Drilled observation well, depth 400 ft, diameter 6 in., cased to 53 ft, open hole from 53 ft to 400 ft.

INSTRUMENTATION.--Water-level recorder collecting data at 60-minute intervals. Satellite telemetry at station.

DATUM.--Land-surface datum is 802.27 ft above NGVD of 1929 (levels by DENR). Measuring point: Top of instrument shelter floor, 1.39 ft above land-surface datum.

REMARKS.--Well is part of Piedmont/Mountains ground-water project.

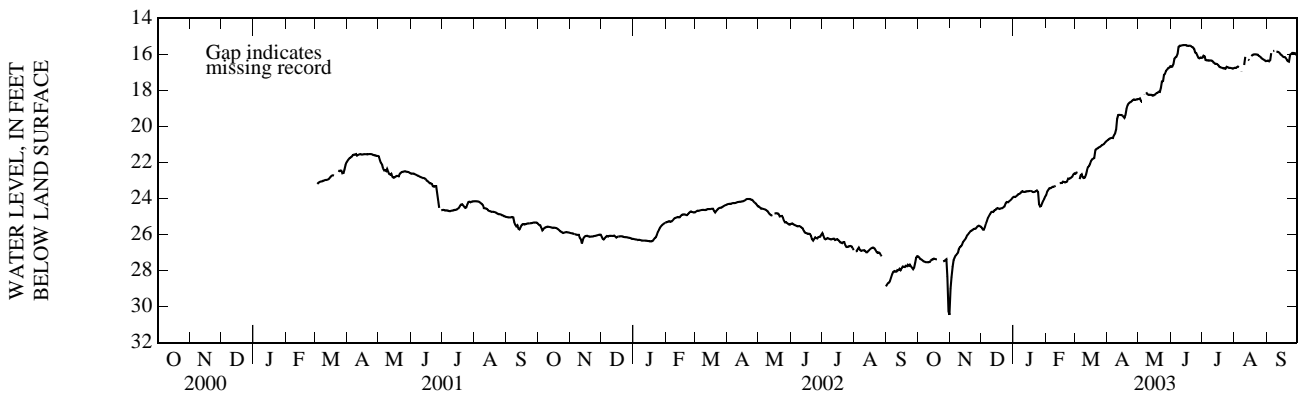
PERIOD OF RECORD.--March 2001 to current year.

EXTREMES FOR PERIOD OF RECORD.--Highest water level recorded, 15.46 ft below land-surface datum, June 12, 13, 14, 2003; lowest water level recorded 31.72 ft below land-surface datum, Oct. 30, 2002.

DEPTH TO WATER LEVEL, FEET BELOW LAND SURFACE
WATER YEAR OCTOBER 2002 TO SEPTEMBER 2003
DAILY MEAN VALUES

DAY	OCT	NOV	DEC	JAN	FEB	MAR	APR	MAY	JUN	JUL	AUG	SEP
1	27.21	29.00	25.62	23.90	23.78	22.63	20.75	18.47	16.69	16.18	16.74	16.36
2	27.28	28.37	25.72	23.92	23.60	22.56	20.71	18.44	16.68	16.07	16.75	16.34
3	27.36	27.79	25.73	23.88	23.50	22.57	20.67	18.59	16.55	16.10	16.71	16.38
4	27.38	27.42	25.59	23.83	23.42	---	20.65	18.59	16.24	16.32	16.67	16.31
5	27.42	27.28	25.41	23.77	23.43	22.92	20.63	---	16.16	16.33	16.70	15.93
6	27.49	27.16	25.24	23.75	23.40	22.71	20.64	18.25	16.13	16.32	---	---
7	27.51	27.10	25.07	23.71	23.35	22.65	20.48	---	15.98	16.35	16.97	15.81
8	27.53	27.01	24.95	23.62	23.34	22.82	20.39	18.10	15.58	16.33	---	15.80
9	27.53	26.79	24.86	23.59	23.32	22.86	20.15	18.21	15.52	16.33	---	---
10	27.53	26.69	24.76	23.62	23.30	22.83	19.59	18.24	15.51	16.35	16.59	15.84
11	27.54	26.65	24.73	23.63	---	22.69	19.36	18.23	15.50	16.39	16.14	15.86
12	27.52	26.57	24.74	23.62	---	22.43	19.35	18.24	15.49	16.46	---	15.87
13	27.44	26.42	24.66	23.60	---	22.25	19.36	18.24	15.48	16.51	---	15.92
14	27.39	26.34	24.64	23.60	23.14	22.19	19.36	18.29	15.48	16.52	16.28	16.00
15	27.38	26.27	24.56	23.59	23.13	22.09	19.38	18.27	15.48	16.54	16.33	16.04
16	27.34	26.17	24.53	23.58	23.14	21.90	19.45	18.23	15.51	16.59	---	16.11
17	27.36	26.04	24.56	23.58	23.07	21.82	19.52	18.20	15.53	16.67	16.10	16.15
18	27.37	25.98	24.58	23.60	23.07	21.78	19.37	18.14	15.52	16.71	16.03	16.14
19	27.36	25.90	24.56	23.63	23.10	21.75	19.01	18.12	15.52	16.74	16.00	16.21
20	---	25.82	24.54	23.64	23.09	21.33	18.84	18.08	15.54	16.75	15.99	16.30
21	---	25.78	24.53	23.62	23.05	21.25	18.72	18.08	15.59	16.78	16.00	16.38
22	---	25.76	24.48	23.59	22.89	21.23	18.66	17.84	15.61	16.77	16.00	16.41
23	---	25.70	24.43	23.55	22.90	21.17	18.65	17.51	15.70	16.79	16.01	16.04
24	---	25.68	24.26	23.63	22.87	21.15	18.60	17.48	15.90	16.69	16.07	15.98
25	27.50	25.68	24.19	24.30	22.83	21.11	18.53	17.14	15.92	16.71	16.11	15.91
26	27.47	25.62	24.21	24.44	22.79	21.05	18.50	17.07	16.04	16.74	16.16	15.91
27	27.41	25.54	24.17	24.41	22.65	21.02	18.53	16.92	16.18	16.74	16.22	15.92
28	27.37	25.51	24.12	24.25	22.61	20.98	18.51	16.84	16.21	16.75	16.26	15.93
29	28.33	25.53	24.07	24.13	---	20.93	18.49	16.76	16.18	16.77	16.30	16.02
30	30.25	25.56	24.00	24.01	---	20.85	18.49	16.74	16.19	16.79	16.33	16.09
31	30.45	---	23.94	23.88	---	20.81	---	16.66	---	16.77	16.38	---

WTR YR 2003 MEAN 20.80 HIGH 15.48 LOW 30.45



353135080524203 IR-132 DENR Langtree Research Station MW-2D (Bedrock well)—Continued

WATER-QUALITY RECORDS

PERIOD OF RECORD.--Water years 2002 to current year.

PERIOD OF DAILY RECORD.--

SPECIFIC CONDUCTANCE: August 2002 to current year.

pH: August 2002 to current year.

WATER TEMPERATURE: August 2002 to current year.

DISSOLVED OXYGEN: August 2002 to current year.

DISSOLVED OXYGEN, PERCENT SATURATION: August 2002 to current year.

INSTRUMENTATION.-- Water-quality monitor with satellite telemetry from August 2002 to current year.

REMARKS.--Station operated in cooperation with North Carolina Department of Environment and Natural Resources, Water Resources Division as part of the Piedmont/Mountains ground-water project. Dissolved oxygen, percent saturation, computed using barometric pressure of 740 mm Hg.

EXTREMES FOR PERIOD OF DAILY RECORD.--

CONSTITUENT	MAXIMUM RECORDED	MINIMUM RECORDED
SPECIFIC CONDUCTANCE, microsiemens	97, December 17, 20, 2002	83, August 23, 31, 2002, September 1, 2, 2002
pH, standard units	7.5, December 15, 16, 17, 2002	6.5, September 19-23, 2003
WATER TEMPERATURE, °C	16.2, June 23, 2003	16.0, on many days during the period
DISSOLVED OXYGEN, mg/L	7.5, August 28, 2002	4.8, on several days during the period
DISSOLVED OXYGEN, PERCENT SATURATION,%	78, August 28, 2002	50, on several days during the period

EXTREMES FOR CURRENT YEAR.--

CONSTITUENT	MAXIMUM RECORDED	MINIMUM RECORDED
SPECIFIC CONDUCTANCE, microsiemens	97, December 17, 20	89, October 12, September 8, 23
pH, standard units	7.5, Decmeber 15, 16, 17	6.5, September 19-23
WATER TEMPERATURE, °C	16.2, June 23	16.0, on many days during the year
DISSOLVED OXYGEN, mg/L	5.9, February 7-11	4.8, on several days during the year
DISSOLVED OXYGEN, PERCENT SATURATION,%	62, February 7-11	50, on several days during the year

353135080524203 IR-132 DENR Langtree Research Station MW-2D (Bedrock well)—Continued

SPECIFIC CONDUCTANCE, WATER, UNFILTERED, MICROSIEMENS PER CENTIMETER AT 25 DEGREES CELSIUS
 WATER YEAR OCTOBER 2002 TO SEPTEMBER 2003
 DAILY MEAN VALUES

DAY	OCT	NOV	DEC	JAN	FEB	MAR	APR	MAY	JUN	JUL	AUG	SEP
1	89	94	94	96	95	94	92	93	92	92	91	90
2	90	94	94	96	95	94	92	92	92	91	91	90
3	90	94	94	96	95	94	92	93	92	91	---	90
4	90	94	94	96	94	---	92	93	92	91	91	90
5	90	94	94	96	94	95	92	92	92	91	---	90
6	90	94	94	96	94	95	92	92	92	91	---	---
7	91	94	94	96	94	94	92	---	92	91	91	90
8	91	94	94	96	94	95	92	92	92	91	---	90
9	91	94	94	96	94	95	92	92	92	90	90	90
10	91	94	94	96	94	95	93	92	92	90	90	90
11	91	94	94	96	94	94	93	92	92	90	90	90
12	92	94	94	96	95	94	93	92	92	90	---	90
13	92	94	94	96	95	94	93	92	92	90	---	90
14	92	94	94	96	95	94	93	92	92	90	90	90
15	92	94	94	96	95	94	93	92	92	90	90	90
16	93	94	94	95	95	94	93	92	92	90	90	90
17	93	94	95	95	95	94	93	92	92	90	90	90
18	93	94	96	95	95	94	93	92	92	90	90	90
19	94	94	96	96	95	94	93	92	92	90	90	90
20	---	94	96	96	96	94	93	92	91	90	90	90
21	---	94	96	95	96	94	93	92	91	90	90	90
22	---	94	96	95	95	93	93	92	91	90	90	90
23	---	94	96	95	95	93	93	92	91	90	90	90
24	---	94	96	95	95	93	93	92	92	90	90	90
25	94	94	96	96	95	93	93	92	92	90	90	90
26	94	94	96	96	95	93	93	92	92	91	90	90
27	94	94	96	96	95	93	93	92	92	91	90	90
28	94	94	96	96	94	92	93	92	92	91	90	90
29	94	94	96	96	---	92	93	92	92	---	---	90
30	94	94	96	95	---	92	93	92	92	---	---	90
31	94	---	96	95	---	92	---	92	---	---	90	---
MEAN	---	94	95	96	95	---	93	---	92	---	---	---
MAX	---	94	96	96	96	---	93	---	92	---	---	---
MIN	---	94	94	95	94	---	92	---	91	---	---	---

353135080524203 IR-132 DENR Langtree Research Station MW-2D (Bedrock well)—Continued

PH, WATER, UNFILTERED, FIELD, STANDARD UNITS
 WATER YEAR OCTOBER 2002 TO SEPTEMBER 2003
 DAILY MEAN VALUES

DAY	OCT	NOV	DEC	JAN	FEB	MAR	APR	MAY	JUN	JUL	AUG	SEP
1	7.0	7.3	7.3	7.3	7.0	7.2	7.1	6.8	6.9	6.9	6.8	6.7
2	7.0	7.3	7.3	7.3	7.0	7.3	7.2	6.8	6.8	6.9	6.8	6.7
3	7.0	7.3	7.4	7.2	7.0	7.3	7.2	6.8	6.8	6.9	---	6.6
4	7.0	7.3	7.4	7.2	7.0	---	7.2	6.8	6.8	6.9	6.8	6.6
5	7.0	7.3	7.4	7.2	7.0	7.3	7.2	6.8	6.8	6.9	---	6.6
6	7.0	7.3	7.4	7.2	7.0	7.3	7.2	6.9	6.8	6.8	---	---
7	7.0	7.3	7.4	7.2	7.0	7.3	7.2	---	6.9	6.8	6.8	6.6
8	7.0	7.3	7.4	7.2	7.0	7.3	7.1	7.0	6.8	6.9	---	6.6
9	7.0	7.3	7.4	7.2	7.0	7.3	7.1	7.0	6.8	6.9	6.7	6.6
10	7.0	7.3	7.4	7.2	7.0	7.3	7.1	7.0	6.8	6.9	6.7	6.6
11	7.0	7.3	7.4	7.2	7.0	7.3	7.1	7.0	6.8	6.9	6.7	6.6
12	7.0	7.3	7.4	7.2	7.0	7.3	7.1	7.0	6.8	6.9	---	6.6
13	7.0	7.3	7.4	7.2	7.1	7.3	7.1	7.0	6.8	6.9	---	6.6
14	6.9	7.3	7.4	7.1	7.1	7.3	7.1	7.0	6.7	6.8	6.8	6.6
15	6.9	7.3	7.4	7.1	7.1	7.3	7.0	7.0	6.7	6.8	6.8	6.6
16	6.9	7.3	7.5	7.1	7.1	7.3	7.0	7.0	6.7	6.8	6.8	6.6
17	6.9	7.3	7.4	7.1	7.1	7.3	7.0	7.0	6.7	6.8	6.7	6.6
18	6.9	7.3	7.3	7.1	7.1	7.3	7.0	7.0	6.7	6.8	6.7	6.6
19	7.1	7.3	7.3	7.1	7.2	7.3	7.0	7.0	6.8	6.8	6.7	6.5
20	---	7.2	7.3	7.1	7.2	7.3	7.0	7.0	6.7	6.9	6.7	6.5
21	---	7.2	7.3	7.1	7.2	7.3	7.0	6.9	6.7	6.9	6.7	6.5
22	---	7.2	7.3	7.1	7.2	7.3	7.0	6.9	6.7	6.9	6.7	6.5
23	---	7.2	7.2	7.1	7.2	7.3	6.9	6.9	6.8	6.8	6.7	6.6
24	---	7.3	7.2	7.1	7.2	7.3	6.9	6.9	6.9	6.8	6.7	6.7
25	7.2	7.3	7.2	7.1	7.2	7.3	6.9	7.0	6.9	6.8	6.6	6.6
26	7.2	7.3	7.2	7.0	7.2	7.3	6.9	7.0	6.9	6.8	6.6	6.6
27	7.2	7.3	7.2	7.0	7.2	7.3	6.9	6.9	6.9	6.8	6.6	6.6
28	7.2	7.3	7.3	7.0	7.2	7.2	6.9	6.9	6.8	6.8	6.6	6.6
29	7.2	7.3	7.3	7.0	---	7.2	6.9	6.9	6.8	---	6.7	6.6
30	7.2	7.3	7.3	7.0	---	7.2	6.8	6.9	6.9	---	6.7	6.6
31	7.3	---	7.3	7.0	---	7.1	---	6.9	---	---	6.7	---
MEAN	---	7.3	7.3	7.1	7.1	---	7.0	---	6.8	---	---	---
MAX	---	7.3	7.5	7.3	7.2	---	7.2	---	6.9	---	---	---
MIN	---	7.2	7.2	7.0	7.0	---	6.8	---	6.7	---	---	---

353135080524203 IR-132 DENR Langtree Research Station MW-2D (Bedrock well)—Continued

 TEMPERATURE, WATER, DEGREES CELSIUS
 WATER YEAR OCTOBER 2002 TO SEPTEMBER 2003
 DAILY MEAN VALUES

DAY	OCT	NOV	DEC	JAN	FEB	MAR	APR	MAY	JUN	JUL	AUG	SEP
1	16.1	16.1	16.1	16.0	16.1	16.1	16.1	16.1	16.1	16.1	16.1	16.1
2	16.1	16.1	16.1	16.1	16.1	16.1	16.1	16.1	16.1	16.1	16.1	16.1
3	16.1	16.1	16.1	16.1	16.1	16.1	16.1	16.1	16.1	16.1	---	16.1
4	16.1	16.1	16.1	16.1	16.1	---	16.1	16.1	16.1	16.1	16.1	16.1
5	16.1	16.1	16.1	16.1	16.1	16.1	16.1	16.1	16.1	16.1	---	16.1
6	16.1	16.1	16.1	16.1	16.1	16.1	16.1	16.1	16.1	16.1	---	---
7	16.1	16.1	16.1	16.0	16.1	16.1	16.1	---	16.1	16.1	16.1	16.1
8	16.1	16.1	16.1	16.1	16.1	16.1	16.1	16.1	16.1	16.1	---	16.1
9	16.1	16.1	16.1	16.0	16.1	16.1	16.1	16.1	16.1	16.1	16.1	16.1
10	16.1	16.0	16.1	16.0	16.1	16.1	16.1	16.1	16.1	16.1	16.1	16.1
11	16.1	16.0	16.1	16.0	16.1	16.1	16.1	16.1	16.1	16.1	16.1	16.1
12	16.1	16.0	16.1	16.0	16.1	16.1	16.0	16.1	16.1	16.1	---	16.1
13	16.1	16.0	16.1	16.1	16.1	16.1	16.1	16.1	16.1	16.1	---	16.1
14	16.1	16.0	16.1	16.1	16.1	16.1	16.1	16.1	16.1	16.1	16.1	16.1
15	16.1	16.0	16.1	16.1	16.1	16.1	16.1	16.1	16.1	16.1	16.1	16.1
16	16.1	16.0	16.1	16.1	16.1	16.1	16.1	16.1	16.1	16.1	16.1	16.1
17	16.1	16.0	16.1	16.1	16.1	16.1	16.1	16.1	16.1	16.1	16.1	16.1
18	16.1	16.0	16.0	16.1	16.1	16.1	16.1	16.1	16.1	16.1	16.1	16.1
19	16.1	16.0	16.0	16.1	16.1	16.1	16.1	16.1	16.1	16.1	16.1	16.1
20	---	16.1	16.0	16.1	16.1	16.1	16.1	16.1	16.1	16.1	16.1	16.1
21	---	16.1	16.1	16.1	16.1	16.1	16.1	16.1	16.1	16.1	16.1	16.1
22	---	16.1	16.1	16.1	16.1	16.1	16.1	16.1	16.1	16.1	16.1	16.1
23	---	16.1	16.1	16.1	16.1	16.1	16.1	16.1	16.1	16.1	16.1	16.1
24	---	16.1	16.1	16.1	16.1	16.1	16.1	16.1	16.1	16.1	16.1	16.1
25	16.1	16.1	16.0	16.1	16.1	16.1	16.1	16.1	16.1	16.1	16.1	16.1
26	16.1	16.1	16.1	16.1	16.1	16.1	16.1	16.1	16.1	16.1	16.1	16.1
27	16.1	16.1	16.1	16.1	16.1	16.1	16.1	16.1	16.1	16.1	16.1	16.1
28	16.1	16.1	16.1	16.1	16.1	16.1	16.1	16.1	16.1	16.1	16.1	16.1
29	16.1	16.1	16.1	16.1	---	16.1	16.1	16.1	16.1	---	16.1	16.1
30	16.1	16.1	16.1	16.1	---	16.1	16.1	16.1	16.1	---	16.1	16.1
31	16.1	---	16.1	16.1	---	---	---	16.1	---	---	16.1	---
MEAN	---	16.1	16.1	16.1	16.1	---	16.1	---	16.1	---	---	---
MAX	---	16.1	16.1	16.1	16.1	---	16.1	---	16.1	---	---	---
MIN	---	16.0	16.0	16.0	16.1	---	16.0	---	16.1	---	---	---

353135080524203 IR-132 DENR Langtree Research Station MW-2D (Bedrock well)—Continued

DISSOLVED OXYGEN, WATER, UNFILTERED, MILLIGRAMS PER LITER
 WATER YEAR OCTOBER 2002 TO SEPTEMBER 2003
 DAILY MEAN VALUES

DAY	OCT	NOV	DEC	JAN	FEB	MAR	APR	MAY	JUN	JUL	AUG	SEP
1	5.3	4.9	5.1	5.1	5.7	5.3	5.2	5.5	5.3	5.4	5.4	5.4
2	5.3	4.9	5.1	5.1	5.7	5.3	5.3	5.5	5.3	5.4	5.4	5.4
3	5.2	4.9	5.1	5.1	5.7	5.3	5.3	5.5	5.3	5.4	---	5.4
4	5.2	5.0	5.1	5.2	5.7	---	5.3	5.6	5.3	5.4	5.4	5.4
5	5.2	5.0	5.1	5.2	5.8	5.4	5.3	5.5	5.3	5.4	---	5.3
6	5.2	5.0	5.1	5.2	5.8	5.5	5.3	5.4	5.3	5.4	---	---
7	5.2	5.0	5.1	5.2	5.8	5.3	5.2	---	5.3	5.4	5.4	5.3
8	5.1	5.0	5.1	5.2	5.9	5.4	5.3	5.4	5.3	5.4	---	5.4
9	5.1	5.0	5.0	5.2	5.9	5.3	5.3	5.4	5.3	5.5	5.5	5.4
10	5.1	5.0	5.0	5.2	5.9	5.3	5.2	5.4	5.3	5.5	5.5	5.4
11	5.1	5.1	5.0	5.3	5.8	5.3	5.2	5.4	5.3	5.5	5.5	5.4
12	5.1	5.1	5.0	5.3	5.7	5.3	5.3	5.4	5.3	5.5	---	5.4
13	5.1	5.1	5.0	5.3	5.6	5.2	5.4	5.4	5.3	5.5	---	5.4
14	5.0	5.1	5.0	5.3	5.6	5.2	5.3	5.4	5.3	5.5	5.5	5.4
15	4.9	5.1	5.0	5.3	5.6	5.2	5.3	5.4	5.3	5.5	5.5	5.4
16	4.9	5.1	4.9	5.3	5.6	5.2	5.3	5.4	5.3	5.5	5.4	5.4
17	4.9	5.2	4.9	5.3	5.5	5.2	5.3	5.4	5.3	5.5	5.4	5.4
18	4.9	5.2	4.8	5.4	5.6	5.2	5.3	5.4	5.3	5.5	5.4	5.4
19	4.9	5.2	4.8	5.4	5.5	5.2	5.3	5.4	5.3	5.5	5.4	5.4
20	---	5.3	4.8	5.4	5.5	5.1	5.4	5.4	5.3	5.5	5.4	5.4
21	---	5.4	4.9	5.5	5.5	5.1	5.3	5.4	5.3	5.5	5.4	5.4
22	---	5.3	4.9	5.5	5.4	5.1	5.4	5.3	5.3	5.5	5.4	5.4
23	---	5.3	4.9	5.5	5.4	5.1	5.4	5.4	5.4	5.5	5.4	5.5
24	---	5.2	4.9	5.5	5.4	5.1	5.5	5.3	5.5	5.5	5.4	5.5
25	4.9	5.2	4.9	5.5	5.4	5.1	5.5	5.3	5.5	5.4	5.4	5.5
26	4.9	5.2	5.0	5.5	5.4	5.0	5.5	5.3	5.5	5.4	5.4	5.5
27	4.9	5.2	4.9	5.5	5.3	5.1	5.5	5.3	5.5	5.4	5.4	5.5
28	4.9	5.2	5.0	5.6	5.3	5.2	5.5	5.3	5.4	5.4	5.4	5.5
29	5.0	5.2	5.1	5.6	---	5.2	5.5	5.3	5.4	---	5.4	5.5
30	4.9	5.2	5.0	5.6	---	5.2	5.5	5.3	5.4	---	5.4	5.4
31	4.9	---	5.0	5.6	---	5.2	---	5.3	---	---	5.4	---
MEAN	---	5.1	5.0	5.4	5.6	---	5.3	---	5.3	---	---	---
MAX	---	5.4	5.1	5.6	5.9	---	5.5	---	5.5	---	---	---
MIN	---	4.9	4.8	5.1	5.3	---	5.2	---	5.3	---	---	---

353135080524203 IR-132 DENR Langtree Research Station MW-2D (Bedrock well)—Continued

DISSOLVED OXYGEN, WATER, UNFILTERED, PERCENT OF SATURATION
 WATER YEAR OCTOBER 2002 TO SEPTEMBER 2003
 DAILY MEAN VALUES

DAY	OCT	NOV	DEC	JAN	FEB	MAR	APR	MAY	JUN	JUL	AUG	SEP
1	55	51	53	53	60	55	54	57	55	56	56	56
2	55	51	53	53	60	55	55	57	55	56	56	56
3	54	51	53	53	60	55	55	57	55	56	---	56
4	54	52	53	54	60	---	55	58	55	56	56	56
5	54	52	53	54	61	56	55	58	55	56	---	55
6	54	52	53	54	61	56	55	56	55	56	---	---
7	54	52	53	54	61	55	55	---	55	56	56	55
8	53	52	53	54	62	56	55	56	55	56	---	56
9	53	52	52	54	62	55	55	56	55	57	57	56
10	53	52	52	54	62	55	54	56	55	57	57	56
11	53	53	52	55	61	55	54	56	55	57	57	56
12	53	53	52	55	60	55	55	56	55	57	---	56
13	53	53	52	55	59	54	56	56	55	57	---	56
14	52	53	52	55	59	54	56	56	55	57	57	56
15	51	53	52	55	59	54	55	56	55	57	57	56
16	51	53	51	55	58	54	55	56	55	57	56	56
17	51	54	51	55	58	54	55	56	55	57	56	56
18	51	54	50	56	58	54	55	56	55	57	56	56
19	51	54	50	56	57	54	55	56	55	57	56	56
20	---	55	50	56	57	53	56	56	55	57	56	56
21	---	56	51	57	57	53	55	56	55	57	56	56
22	---	55	51	57	56	53	56	56	55	57	56	56
23	---	55	51	57	56	53	56	56	56	57	56	57
24	---	54	51	57	56	53	57	55	57	57	56	57
25	51	54	51	57	56	53	57	55	57	56	56	57
26	51	54	52	57	56	52	57	55	57	56	56	57
27	51	54	51	58	55	53	57	55	57	56	56	57
28	51	54	52	58	55	54	57	55	56	56	56	57
29	52	54	53	58	---	54	57	55	56	---	56	57
30	51	54	52	58	---	54	57	55	56	---	56	56
31	51	---	52	59	---	---	---	55	---	---	56	---
MEAN	---	53	52	56	59	---	56	---	55	---	---	---
MAX	---	56	53	59	62	---	57	---	57	---	---	---
MIN	---	51	50	53	55	---	54	---	55	---	---	---

WATER-QUALITY RECORDS

PERIOD OF RECORD.--August 2002, March 2003.

REMARKS.--Station operated in cooperation with North Carolina Department of Environment and Natural Resources, Water Resources Division as part of the Piedmont/Mountains ground-water project.

WATER-QUALITY DATA, MARCH 2003

Date	Time	pH, water, unfltrd field, std units (00400)	Specif. conductance, wat unfiltered uS/cm 25 degC (00095)	Temperature, water, deg C (00010)	Hardness, water, unfiltered mg/L as CaCO3 (00900)	Calcium water, filtered, mg/L (00915)	Magnesium, water, filtered, mg/L (00925)	Potassium, water, filtered, mg/L (00935)	Sodium, water, filtered, mg/L (00930)	ANC, wat unfiltered, titr., field, mg/L as CaCO3 (00419)	Bicarbonate, wat unfiltered, titr., field, mg/L (00450)	Bromide water, filtered, mg/L (71870)	Chloride, water, filtered, mg/L (00940)
MAR 04...	1245	6.9	95	17.6	34	9.39	2.60	1.88	4.67	110	133	0.02	1.37
Date	Fluoride, water, filtered, mg/L (00950)	Silica, water, filtered, mg/L (00955)	Sulfate water, filtered, mg/L (00945)	Residue on evap. at 180degC wat flt mg/L (70300)	Ammonia + org-N, water, filtered, mg/L as N (00623)	Ammonia water, filtered, mg/L as N (00608)	Nitrite + nitrate water, filtered, mg/L as N (00631)	Nitrite water, filtered, mg/L as N (00613)	Orthophosphate, water, filtered, mg/L as P (00671)	Arsenic water, filtered, ug/L (01000)	Boron, water, filtered, ug/L (01020)	Iron, water, filtered, ug/L (01046)	Manganese, water, filtered, ug/L (01056)
MAR 04...	0.08	37.7	1.0	91	<0.10	<0.04	1.26	<0.008	0.04	<2	<13	<10	0.4
Date	Alpha radioactivity water, filtered, Th-230, pCi/L (04126)	Gross beta radioac water, filtered, Cs-137, pCi/L (03515)	Rn-222, water, unfiltered, pCi/L (82303)										
MAR 04...	M	1.5	440										